

Unified Access Device

A new class of wireless mobility devices

ICX10 Series UAD

11ac Dual Band Multi-mode wireless

ICX10UAD

ICX10UAD CLOUD

Multi-protocol ICX10 series deliver gigabit 802.11ac performance combines software-driven multi-mode security, guest access and routing with content awareness. This Unified Access Device (UAD) ensures ease of deployment with as standalone, developer integration, or icXmanager intelligent cloud control combined with patent-pending content policy for the most demanding mobility ecosystem.

Unified Access Devices are designed to deliver a flexible platform for IP networks ranging from small hotspots to highly complex growth networks. UADs ensure simple connectivity and provisioning, identification of content, content control to ensure delivery for an enhanced user experience even while the network becomes more saturated.

Policy-based and software-driven features allow for specific Quality-of-Service streams that ensure voice, video, and data services based on client or provider requirements. Combined with basic Firewall setting, these devices enable users to start deploying true all-wireless network environments at superior value.

Advanced per device software support ensure user performance regardless if you deploy 1 or 1,000 devices. All ICX10UADs deliver Captive Portal support, 4k VLANs, Dual IP Address, IEEE 802.1p VLAN priority, WMM, IEEE 802.11e EDCA, and Service-Aware priority assigned by VSC, support for radius authentication and Layer 2 Isolation.

The **ICX10UAD CLOUD** is ideal for low or high density environments. The icXmanager cloud and UAD operating system is simple to use for the novice IT person while loaded with beyond enterprise features to ensure content control and delivery.

The **ICX10UAD** can be used as a standalone device, integrated into management systems or provide capable integrators with open source access to deploy their own Wireless as a Service platforms including Location Service and Monetization among others services.



Choose your mode:

Designed for use by small and medium IT professional as well as the most demanding service provider, the ICX10UAD device intelligence goes beyond standard wireless devices. A more intelligent edge gives the user better control to deploy applications, enhance security and provide better user experience.

Access Point
 NAT/Routing
 Firewall
 WDS
 Security Beacon
 CPE



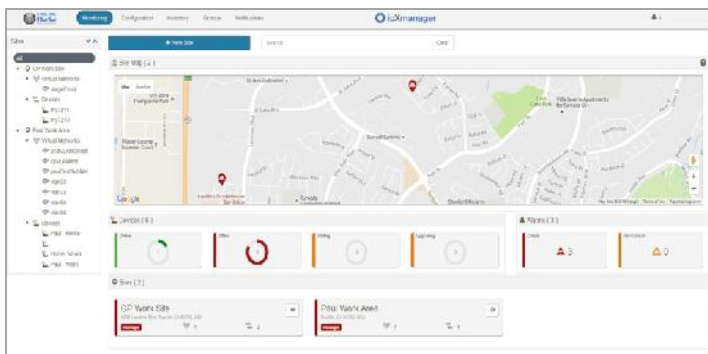
icXmanager cloud
 management for easy
 deployment and control
 (Some features may differ)

Unified Access Device

A new class of wireless mobility devices

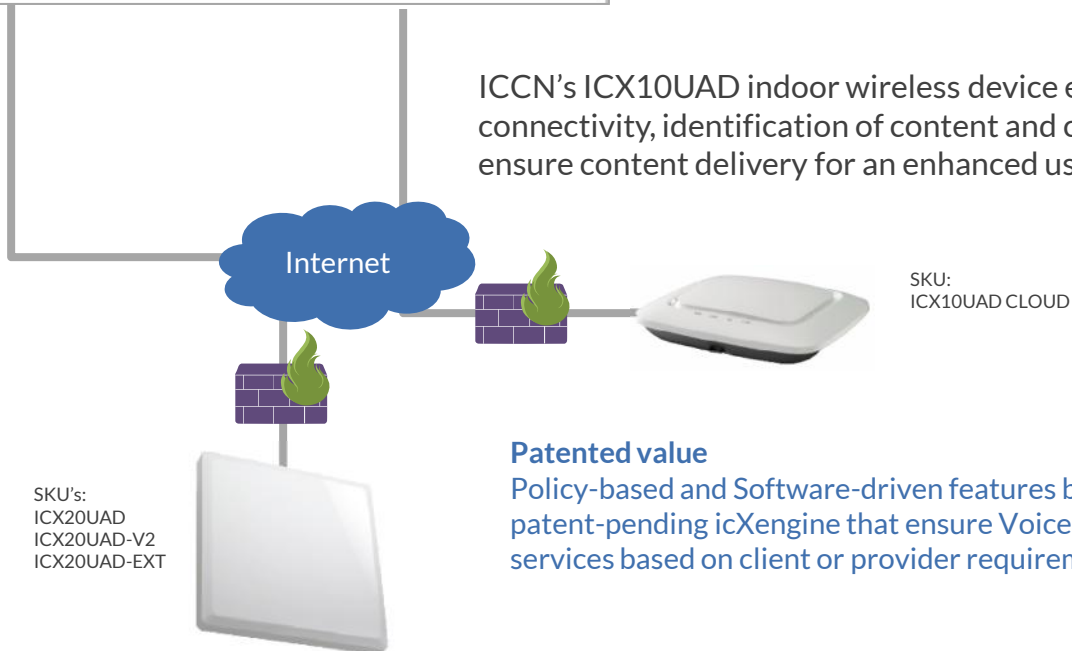
ICX10UAD CLOUD

Intelligent enterprise wireless edge to ensure simple content control and delivery



The icXmanager cloud system is designed for intelligent yet simple and cost-effective deployment of the ICX smart wireless products. Deploy 1, 1,000 or 10,000 units of this robust ecosystem to ensure visibility, management and control.

SKU's:
vXman-UAD1
vXman-UAD2
vXman-UAD3



ICCN's ICX10UAD indoor wireless device ensure 11ac connectivity, identification of content and content control to ensure content delivery for an enhanced user experience.

Patented value

Policy-based and Software-driven features begin with ICCN's patent-pending icXEngine that ensure Voice, Video, and Data services based on client or provider requirements.

ICCN's ICX20 Series outdoor devices give service provider flexibility, SNMP or Cloud management with routing, security and firewall capabilities that compliment central management control.

Smart value

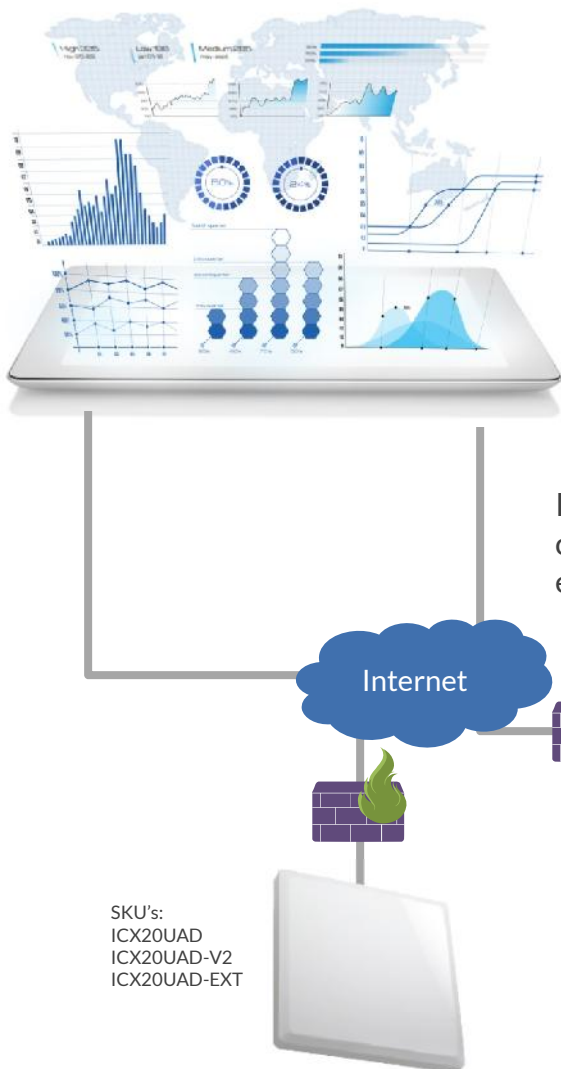
These Unified Access Devices leverage software to drive flexibility while reducing mobile edge cost in a time of growing Internet of Things. Handling more devices with greater network control will drive client adoption.

Unified Access Device

A new class of wireless mobility devices

ICX10UAD

First open platform designed to help providers integrate networks into their management systems



The ICX10UAD is designed for integration with client management systems and service provider platforms. The Unified Access Device Operating System supports an extended feature set to allow clients the ability to control their own ecosystems.

System access to merge data with your platforms to provide a variety of your own reports, policies, and reporting

ICCN's ICX10UAD indoor wireless device ensure 11ac connectivity, identification of content and content control to ensure content delivery for an enhanced user experience.

Patented value

Policy-based and Software-driven features begin with ICCN's patent-pending icXEngine that ensure Voice, Video, and Data services based on client or provider requirements.

ICCN's ICX20 Series outdoor devices give service provider flexibility, SNMP or Cloud management with routing, security and firewall capabilities that compliment central management control.

Smart value

These Unified Access Devices leverage software to drive flexibility while reducing mobile edge cost in a time of growing Internet of Things. Handling more devices with greater network control will drive client adoption.

FEATURES

RADIO

Dual Band Radio
 2X2 MIMO
 IEEE 802.11n
 IEEE 802.11ac

Meets international Wi-Fi Standards and supports the most modern Wi-Fi specifications.

2.4GHz IEEE 802.11 b/g/n
 5GHz IEEE 802.11 a/n/ac

Supported 2.4GHz Wi-Fi channels
 Channel 1-11 (NA)
 Channel 12-13 (ROW)
 Channel 14 (Japan)

Supported 5GHz Wi-Fi channels
 Channels:
 36,40,44,48,52,56,60,64,100,104,108,112,116,120,124,149,153,157,161
 Wi-Fi scanning to allow for best channel strength/settings

MAC Filtering
 Individual Radio Client Management
 Wireless Client Connection
 Transmission Management
 Ability to limit/exclude certain channels
 Radio Transmit Power Control

Multiple SSIDs
 16 SSIDs per band / 32 SSIDs total
 256 simultaneous users

RADIO MODES

AP Mode
 AP WDS Mode

AUTHENTICATION TYPES AND SECURITY

Multiple authentication methods
 WPA(PSK), WPA2(PSK), WEP
 WPA Enterprise, WPA2 Enterprise

Multiple encryption algorithms
 CCMP (AES)
 TKIP
 CCMP and TKIP both
 Hidden SSID support
 Wireless client isolation
 Remote Radius authentication and accounting support
 Local authentication while utilizing other

ICX10 Series:

ICX10UAD – 11ac 2x2:2 Performance for standalone, integration, or open source
 ICX10UAD CLOUD - 11ac 2x2:2 Performance used with icXmanager Cloud

type of authentication (MAC passing)

WAN CONNECTIVITY MODES

DHCP
 Static
 PPTP
 L2TP
 PPPoE

LAN CONNECTIVITY MODES

DHCP Server
 Configurable DHCP Lease Time
 Configurable DHCP IP Pool
 Static

NETWORKING

VLAN Support
 Out-of-band management IP
 Static Routing
 End user Router Mode
 SNMP support for usage statistics and equipment health
 WAN ping blocking

QoS / Bandwidth Management
 Client level advanced bandwidth management
 Auto enabled QoS
 Wireless QoS (WMM)
 Packet queuing and prioritization

CAPTIVE PORTAL

SSID Binding
 Automatic redirection to Splash page
 Customizable landing page
 Custom DNS
 Built-in web-server
 NAS ID support
 Whitelisted Websites
 WISPr attributes

Various attributes support
 Standard Radius Access accept
 Bandwidth up and down
 Data usage
 Session time out
 Idle Timeout
 Interim accounting updates
 Disconnect message
 Multiple RADIUS profiles support
 Optional secondary RADIUS server and prioritization options

CLI

User friendly CLI support

USER INTERFACE

Easy access Web GUI
 Multiple browser compatibility
 Internet Explorer 11
 Google Chrome
 Mozilla Firefox
 Safari
 Multiple Admin login support
 Admin access log

GRAPHS

Realtime Graphs
 Load Graph
 Traffic Graph
 Wireless Graph
 Active Connection Graph

ROUTES

ARP
 Active IPv4-Routes

ADMINISTRATION

Setting of Router password
 SSH
 Telnet

FIREWALL

Firewall settings
 General settings
 Zones settings
 Port Forwarding
 Firewall Rules
 Traffic Rules
 Source NAT

BACKUP/UPGRADE FIRMWARE

Firmware Options
 Backup/Restore firmware
 Reset to defaults
 Flash new firmware keeping previous configurations
 Flash new firmware with factory settings
 Configurable Option
 Backup file list

DIAGNOSTICS

Ping
 Trace route
 Nslookup

CERTIFICATIONS

FCC
 IC

Contact:

Phone: 844.242.9246
 Email: sales@intcomcorp.com
 Web: www.iccnetworking.com