

Performance and Functionality

Packed in a Thin & Light Chassis

The ThinkPad® P50s takes mobility and performance to a whole new level. Made for professionals on the go, the P50s features the latest Intel® Core™ processors and NVIDIA® Quadro® professional graphics. Lenovo's thin and light full-function mobile workstation also will last as long as you can using Power Bridge Technology. The ThinkPad® P50s is MIL-SPEC tested for maximum durability, is ISV certified, and features a beautiful 15.6" 3K IPS display with optional touchscreen.

Lenovo™



WHY YOU SHOULD BUY THE LENOVO™ THINKPAD® P50s MOBILE WORKSTATION



Mobile performance

Thin, light and powerful using Intel® Core™ processors, latest NVIDIA® Quadro® graphics card, up to 32 GB of memory, and flexible storage options.



Stunning visuals

Ultra high resolution 3K IPS anti-glare display with wide viewing angles and touchscreen option for a premium interactive experience.



Powered up

Power Bridge technology lets users hot-swap the rear battery; giving you freedom from the plug. Power Bridge uses two batteries to keep you going at all times.



Legendary reliability

Engineered to endure the rigors of day-to-day use in the field; the ThinkPad P50s is MIL-SPEC tested so users know they are getting a reliable product that lasts.

THE LENOVO™ THINKPAD® P50s MOBILE WORKSTATION IS BEST SUITED FOR

1

Engineers and designers who have to have the thinnest, lightest, yet fastest system.

2

Users looking for ISV certified mobile workstation which ensures superior application performance.

3

Torture-tested to be ThinkPad® tough; ensuring your system can withstand the rigors of day-to-day use in the field.

WHAT'S IN A THINKPAD®

①

The gold standard in reliability since 1992

②

Premium materials and layers of reinforcement

③

Award winning ergonomic keyboard

④

Form factors for all needs

⑤

Purposeful design details



SPECIFICATIONS

PERFORMANCE

Processor

6th Generation Intel® Core™ i7 Processor

Operating System

Windows 10 Pro

Windows 8.1 Pro

Windows 8.1

Windows 7 Professional (available through downgrade rights from Windows 10 Pro)

Graphics

NVIDIA® Quadro® M500M

Memory

2 SODIMM Slots, 32 GB Max., 1600MHz

Max. Storage Devices - 1

1 TB HDD

512GB SSD

256GB PCIe

Power Supply

65 W

Battery¹

3 Cell Front (44 WHr)

3 Cell Rear (23 WHr)

6 Cell Rear (48 WHr)

6 Cell Rear (72 WHr)

CONNECTIVITY

Ports

(3) USB 3.0, 1 Always-on Charging

(1) HDMI 1.4

(1) Mini DisplayPort™ 1.2

(1) RJ45 Gigabit Ethernet

(1) Docking Connector

(1) Microphone / Headphone Combo Jack

(1) Smart Card Reader²

(1) SDXC

WLAN

Intel® 8260 2 x 2 a/c + Bluetooth® 4.1 vPro

Intel® 8260 2 x 2 a/c + Bluetooth® 4.1

WWAN

Sierra EM7455 - 4G LTE-A

Huawei ME906s - 3G/4G

Media Card Reader

Integrated 4-in-1 SD Card Reader

(SD, SDHC, SDXC, MMC)

DESIGN

Dimensions (W x D x H)

(mm) 380.6 x 258.2 x 22.4 - 23.3

(inches) 15 x 10.2 x 0.88 - 0.92

Display

FHD (1920 x 1080) IPS, 300 nits

FHD Touch (1920 x 1080) IPS, 270 nits

3K (2880 x 1620) IPS, 350 nits

Weight

Starting at 4.9 lbs (2.2 kg)

Keyboard

ThinkPad® Precision Keyboard with

Numeric Keypad and Backlit²

SOFTWARE

Windows 10 Preload

- Lenovo™ Connect
- Lenovo™ Companion
- Lenovo™ Solution Center
- McAfee™ LiveSafe (30-day trial)
- Microsoft Office 2013 (trial)
- Lenovo Setting

Windows 7 Preload

- Lenovo™ Connect
- Lenovo™ Solution Center
- McAfee™ LiveSafe (30-day trial)
- Microsoft Office 2013 (trial)
- Acrobat Reader
- ThinkVantage® System Update
- Rescue and Recovery®

GREEN CERTIFICATION

- EPEAT™ Gold
- ENERGY STAR® 6.1
- GREENGUARD®
- RoHS Compliant

¹ Battery life (and recharge times) will vary based on many factors including system settings and usage. A description of the environment under which the test was performed is available upon request.

² Optional.

RECOMMENDED SERVICES

Lenovo™ offers a comprehensive portfolio of services to support and protect your ThinkPad® investment. Focus on your customers and business, not your IT.

PRIORITY TECHNICAL SUPPORT³

Makes your priority, our priority. 24x7 priority call routing to advanced-level technicians, electronic incident tracking, and rapid response and resolution.

WARRANTY UPGRADES - ON-SITE AND NEXT BUSINESS DAY

Maximizes PC uptime and productivity by providing convenient, fast repair service the next business day.

WARRANTY EXTENSIONS

(1-TO-4 YEARS TOTAL DURATION)

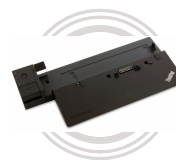
This fixed-term, fixed-cost service helps accurately budget for PC expenses, protect your valuable investment and potentially lower the cost of ownership over time.

KEEP YOUR DRIVE

Retain your drive if it should happen to fail, giving you the peace of mind to know that your valuable data is secure. KYD applies to all drives within multi hard disk/SSD systems.

³ Not available in all regions.

OPTIONS & ACCESSORIES



ThinkPad®
Ultra Dock
40A20170US

lenovopartnernetwork.com
lenovopartnernetwork.com/ca

