

# Incipio Security Case

for Microsoft Surface Pro 4

Add an extra layer of security and convenience to your Microsoft Surface 4 with the Incipio Security Case. The case includes an integrated smart card reader to help simplify logins and prevent unauthorized access to data on your device or private network. The Incipio Security Case delivers reliable protection in a sturdy, durable design. Composed of rigid hard shell polycarbonate co-molded with shock absorbing TPU, you get double the defense in a single, slim form. Living hinge technology allows full compatibility with the Surface kickstand and it remains fully compatible with the Surface Pro 4 Type Cover keyboard whether open or closed. With its covered buttons to keep dust and dirt out, and an integrated rugged molded TPU Surface Pen holder, the Incipio Security case is your go-to solution for robust device protection and security.

## FEATURES

- Use the smart card reader with your choice of smart card and security software to add authentication and secure login procedures in sensitive environments.
- Conveniently snaps into place without the need for tools or screws.
- Reads CAC cards of all US Government and DOD including Army, Air Force, Navy, Marines, National Guard and Reserves.
- Fully compatible with the Surface Pro 4 Type Cover keyboard.

*\* Smart card and smart card middleware are required and sold separately. Third-party security software can be purchased separately.*

## SKU

PW-220-BLK

AVAILABILITY JULY 2016

**MSRP: \$149.99**



Designed for



## SPECIFICATIONS

### Smart Card Compatibility

Supports Class A, B, and C smart cards

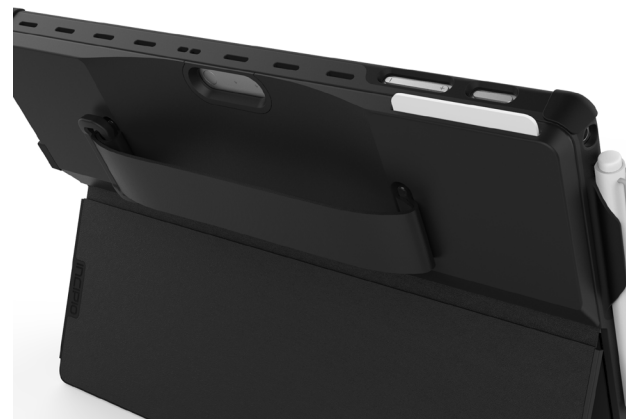
### Compliance

FIPS 201

TAA

ISO7816

Host Interface	<ul style="list-style-type: none"> <li>• Full speed USB (12 Mbps)</li> <li>• Bus powered device</li> <li>• CCID compliant</li> </ul>
Smart Card Interface	<ul style="list-style-type: none"> <li>• T=0, T=1 protocol support</li> <li>• Memory card support through SCM MCARD API</li> <li>• Communication speed up to 420 kbps (PPS, FI parameter)</li> <li>• Frequency up to 8 MHz (PPS, DI parameter)</li> <li>• Supports ISO 7816 Class A, B, and C smart card</li> </ul>
Smart Card Connector	<ul style="list-style-type: none"> <li>• 8 contacts - ISO location</li> <li>• 100,000 insertions</li> <li>• Sliding contact</li> <li>• Short circuit protection</li> </ul>
Human Interface	<ul style="list-style-type: none"> <li>• One dual state green LED</li> </ul>
Cable/Power	<ul style="list-style-type: none"> <li>• Cable: 1.5m long with USB type A connector</li> <li>• Power through USB bus</li> </ul>
Operating Temperature	<ul style="list-style-type: none"> <li>• 0° to 50° Celsius</li> </ul>
API	<ul style="list-style-type: none"> <li>• PC/SC</li> <li>• CT-API (through wrapper on top of PC/SC)</li> </ul>
Approvals	<ul style="list-style-type: none"> <li>• FCC (Class B part 15, cULus, CE, VCCI)</li> <li>• Microsoft® WHQL 2000, XP, Server2003, Windows 7, 8, 10</li> <li>• EMV 2000 Level 1</li> </ul>
Environmental	<ul style="list-style-type: none"> <li>• RoHS</li> <li>• WEEE</li> </ul>
USB Port	<ul style="list-style-type: none"> <li>• USB 2.0, 500mA</li> </ul>



## WHAT'S IN THE BOX

- Incipio Security Case with Smart Card Reader
- Adjustable Hand Strap
- User Documentation