

Lenovo® recommends Windows 8.

**lenovo**® **FOR**  
**THOSE**  
**WHO DO.**™

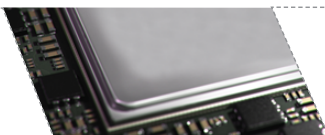
## THINKPAD® TABLET 10

A TABLET WITHOUT COMPROMISE.

DELIVERING A PC EXPERIENCE AND SUPERIOR VERSATILITY IN THE PALM OF YOUR HAND.



ThinkPad® Tablet 10 provides a full PC experience in the office, at home or on the move, so you can be productive on your terms. But there's no need to sacrifice power for versatility. Windows 8.1 along with a fast Intel Quad Core processor, brilliant 10" Full HD screen and amazing up to 10-hour battery life combine to deliver the power and functionality of a PC in a stylish, convenient tablet.

WHY BUY A  
THINKPAD 10?1 FULL PC  
EXPERIENCE

Performs like a PC with powerful Intel Quad Core processor, 10" Full HD display, Windows 8.1 with 64-bit support, and more.

2 TOTAL  
VERSATILITY

Work, play and create just the way you want. Optional keyboard lets ThinkPad 10 switch effortlessly from Tablet to Laptop, Stand modes.

3 GOES ANYWHERE AND  
EVERYWHERE

Up to 10 hours of battery life plus seamless connectivity (Wi-Fi, WWAN, USB 2.0, micro HDMI) provide the versatility to work anywhere, anytime.

4 STYLISH YET  
DURABLE

Built to be used in any situation with an elegant, grip-friendly aluminum finish and scratch-resistant Gorilla Glass screen.

5 A COMPLETE  
ECOSYSTEM DESIGNED  
FOR PRODUCTIVITY

An ecosystem of accessories, including Digitizer pen, will optimize and protect your investment ensuring you get the most out of your tablet.

WHO NEEDS  
A THINKPAD 10?

**1** Business people who want a single device that's easily portable and adapts to any work environment.

**2** Mobile workers who need a device that is totally versatile and easily connected.

**3** People who want a full PC experience in a portable, powerful, versatile device.

[www.lenovopartnernetwork.com](http://www.lenovopartnernetwork.com)  
[www.lenovopartnernetwork.com/ca](http://www.lenovopartnernetwork.com/ca)



Lenovo® recommends Windows 8.

**lenovo**® **FOR**  
**THOSE**  
**WHO DO.**™

## SPECIFICATIONS

## PERFORMANCE

**Processor**

Intel Atom Processor Z3795 SoC Quad Core

**Operating System**Windows 8.1  
Windows 8.1 Pro**Graphics**

Intel HD Graphics (Gen7), DX 11, OCL 1.1 &amp; Open GL 3.2, HDCP 1.4/2.1

Intel GFX with Burst Technology, Full HW acceleration, FHD 1080P@60

**Memory**

2 GB/4GB SDRAM, LPDDR3-1067

**Webcam**

2.0MP - 720P with mute function

**Storage**

eMMC4.51, 64, 128GB

**Audio**

HD audio w/WaveRT, DSP, MS LYNC certified

**Battery**

Up to 10 hours of battery

**Camera**

Front: 2MP (HD1080p)

Rear: 8MP (HD1080p) w/ Auto Focus and Flash

\* US, Canada, EU, ANZ

\*\* JP

## DESIGN

**Display**10.1" (1920 x 1200) WUXGA  
IPS and 10 Finger Touch Screen  
With digitizer pen**Dimensions (W X D X H)**WiFi 256.5 x 177 x 8.95  
WWAN 256.5 x 177 x 8.95  
Smart Card Reader 256.5 x 177 x 16.95**WWAN / WIFI**Sierra EM7345 LTE/EVDO/HSPA+ 42Mbps M.2\*  
Support Win8.1  
Broadcom BCM43241 2x2 a/b/g/n+BT**Weight**WiFi: 598g  
WWAN: 610g  
Smart Card Reader: 660g**Thickness**

8.95mm

## CONNECTIVITY

**I/O (Input / Output ports)**Micro HDMI, Standard USB 2.0 connector x1,  
Micro SD slot

## SOFTWARE

Lenovo Companion  
 Lenovo Support  
 Lenovo Tap to Share (QuickCast)  
 AccuWeather  
 Evernote  
 Norton Studio  
 Skype  
 Zinio  
 SinaSocial net  
 Iqiyi  
 Ctrip  
 1-Year Office 365 Personal subscription (Trial only on Win8.1 Pro)  
 Norton Internet Security 2014 with 30 days of virus protection  
 Nitro Pro 8  
 Lenovo Solution Center  
 ThinkVantage System Update  
 Lenovo Reach  
 Hightail -metro (cloud storage)  
 Maxthon Browser (Not Available in China)  
 Lenovo Photo Editor by CL Metro  
 Lenovo Video Editor by CL Metro

## ACCESSORIES

ThinkPad 10  
Quickshot  
CoverThinkPad 10  
Ultrabook  
KeyboardThinkPad 10  
Digitizer  
PenThinkPad 10  
Tablet  
DockWHY  
THINKPAD®

- 1 Engineered to endure** - Premium materials and layers of reinforcements protect your data even in extreme conditions
- 2 The gold standard in reliability, since 1992** - Superior cooling, spill resistance and dust protection guard against system failure
- 3 Thoughtful design inspired by you** - Every small detail is researched and crafted by our engineers for an enhanced user experience
- 4 Award-winning ergonomic keyboard** - Precision keyboard design for better typing comfort and accuracy
- 5 A new level in mobility** - Stylish multimode convertibles, tablets, ultra-mobile ultrabooks, performance laptops, mobile workstations: there's a ThinkPad for every need

## LENOVO SERVICES

ThinkPad Tablet offers a full portfolio of enterprise level services. Better management of multiple devices, more customization options, higher productivity and enhanced security give you the peace of mind you need to get things done.

**PRIORITY TECHNICAL SUPPORT \***

Makes your priority, our priority. 24x7 priority call routing to advanced-level technicians, electronic incident tracking, and escalation management services.

**WARRANTY EXTENSIONS (1 TO 3 YEARS TOTAL DURATION)**

This fixed-term, fixed-cost service helps accurately budget for PC expenses, protect your valuable investment, and potentially lower the cost of ownership over time.

**ACCIDENTAL DAMAGE PROTECTION**

Avoid the hassles of unexpected repair costs. Provides coverage for non-warranted damage incurred under normal operating conditions, such as minor spills, drops, or damage to the integrated screen.

**LENOVO IMAGING AND ASSET TAGGING SERVICES**

Let the experts in Lenovo's Imaging Technology Center provide the customization your tablet needs to ensure it is secure and ready to meet the needs and requirements of an enterprise organization. Save time and money and make sure your tablets are ready to go right out of the box.


[www.lenovopartnernetwork.com](http://www.lenovopartnernetwork.com)
[www.lenovopartnernetwork.com/ca](http://www.lenovopartnernetwork.com/ca)

\* Not available in all regions

©2014 Lenovo. All rights reserved.

Availability: Offers, prices, specifications and availability may change without notice. Lenovo is not responsible for photographic or typographic errors. **Warranty:** For a copy of applicable warranties, write to: Warranty Information, 500 Park Offices Drive, RTP, NC, 27709, Attn: Dept. ZPYA/B600. Lenovo makes no representation or warranty regarding third-party products or services. **Trademarks:** Lenovo, the Lenovo logo, Rescue and Recovery, ThinkStation, ThinkVantage and ThinkVision are trademarks or registered trademarks of Lenovo. Microsoft, Windows and Vista are registered trademarks of Microsoft Corporation. Intel, the Intel logo, Intel Inside logo, Intel Atom and Intel Atom Inside are trademarks of Intel Corporation in the U.S. and/or other countries. Other company, product and service names may be trademarks or service marks of others. Battery life (and recharge times) will vary based on many factors including system settings and usage. Visit [Lenovo.com/safecomputing](http://Lenovo.com/safecomputing) periodically for the latest information on safe and effective computing.

