



FCS-4301 Version: 1

## PTZ Dome Network Camera, 2-Megapixel, 802.3af PoE, IR LEDs, Day & Night, 3x Optical Zoom, WDR



1. Housing Latch
2. Power Socket
3. PoE LAN Port
4. Lens

5. IR LED
6. Internal Microphone
7. Micro SD/SDHC Card slot
8. Reset Button

### Key Features

- 2-Megapixel (1920 x 1080) high-definition resolution
- Compression: H.264/MPEG-4/MJPEG
- Built-in infrared LEDs for night viewing up to 20m
- Features WDR (Wide Dynamic Range) to enhance visibility under extremely bright or dark environments
- Free video surveillance and CMS (Central Management System) software with 64-channel license
- Removable IR-cut filter for day and night surveillance
- Supports 2 video streams simultaneously
- Supports 3x optical zoom
- Supports PTZ/preset point/preset sequence
- Support unique features for auto-tracking function of moving objects

## Specifications

### System Specifications

#### Standards & Protocols:

IEEE 802.3 10-BASE-T, Ethernet

IEEE 802.3u 100-BASE-TX, Fast Ethernet

TCP/IP, HTTP, SMTP, FTP, DDNS, UPnP, NTP, PPPoE, DNS, DHCP, RTSP, Samba

#### Image Sensor:

2-Megapixel 1/2.7" Progressive Scan CMOS

#### Connectors and Cabling:

1 x RJ-45 10/100 Mbps PoE port

1 x DC Power Jack

1 x Audio in

1 x Audio out

1 x DI/DO

#### Modularity:

1 x MicroSD/SDHC card slot

#### Button:

Reset Button

#### Indicator:

Power, Link

#### Lens:

3X optical zoom lens, auto iris, auto focus

f = 3mm ~ 9mm, F1.8

Fov(D), 136° ~ 39°

#### IR Cut Filter:

Removable infrared-cut filter for day & night function

#### IR LED:

6 IR LEDs for illumination up to 20m

#### Shutter Time:

Indoor : 1/30 ~ 1/120 sec

Outdoor : 1/30 ~ 1/1,000,000 sec

#### Angle of View:

62°

#### Pan/Tilt/Zoom:

Pan range: 250°

Tilt range: 75°

Auto pan mode

Auto patrol mode

3X optical zoom , 4X digital zoom

#### Video Compression:

H.264 / MPEG4 / MJPEG

#### Resolution:

2M (1920x1080)

#### Video Format:

MPEG4

#### Audio Compression:

AMR / AAC / AEC

#### Power:

Power Consumption: 8W

Power Input: DC12V 1.5A / 802.3af PoE

## Features

### General:

Backup: MicroSDHC card slot for local storage  
IPv6: IPv4/IPv6 network operation  
DNS: Easy Internet monitoring

### Security:

Alarm and Notification: Alarm: Motion Detection; Notification: FTP, SMTP, Samba  
Access Control: Multi-level user access with password protection  
IP address filtering  
HTTPS encrypted data transmission

### Video:

Image Setting: - Adjustable image size, quality and bit rate  
- Configurable brightness, sharpness, contrast, saturation, white balance and exposure  
- AGC/AWB/AES  
- Wide Dynamic Range (WDR)  
- 3D Noise Reduction (3DNR)  
- Flip & Mirror  
- Time Stamp  
Streaming: Up to 2 video streams

### Audio:

2-way audio (line in/out)  
Built-in microphone

## Performance

### Number of Clients:

16

### Data Transfer Rate:

10/100Mbps

### Storage Capacity:

SD/MicroSD memory card of up to 64GB

### Frame Rate:

30 fps at 1920 x 1080; 30 fps at 1280 x 720; 30 fps at 640 x 480; 15 fps at 320 x 240

### Minimum illumination:

Color: 1.0 lux at F2.0

## Environment

### Temperature (°C):

Operating: 0°C ~ 40°C

### Humidity (Non-condensing):

Operating: 10% ~ 80%

## Physical Specifications

### Dimensions (W x D x H mm):

63 x 63 x 92 mm

### Weight (g):

380 g

## Others

### Approval and Compliance:

CE, RoHS, FCC, Onvif



### Deployment:

Desktop/Ceiling Mount

### Operation Systems:

Microsoft Windows 8/7/Vista/XP

### Viewing Systems:

Browser: Internet Explorer 6.x or above, Firefox, Chrome, Safari

Cell phone: 3GPP player

Real Player: 10.5 or above

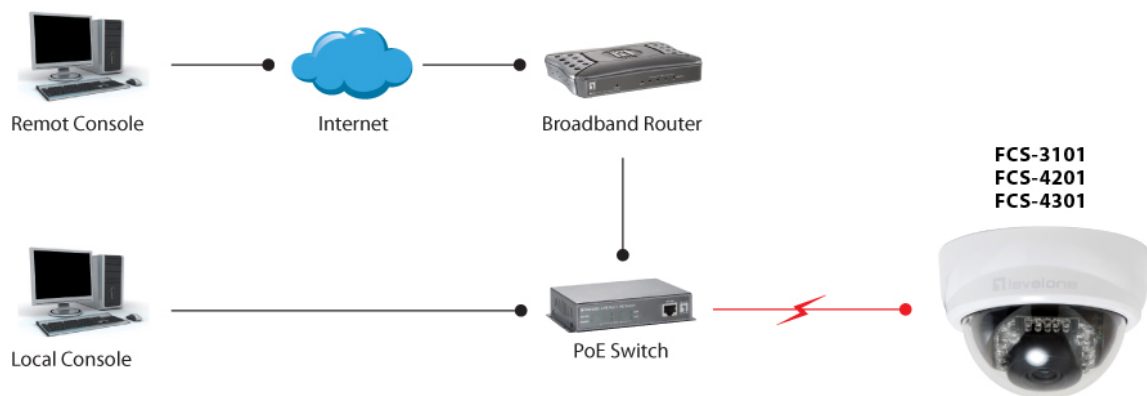
Quick Time 6.5 or above

---

## Diagram

— Ethernet Cable (Data)

⚡ PoE (Power + Data)



---

## Order Information

FCS-4301

---

## Package Contents

FCS-4301

Power Adapter

RJ-45 Female/Female Coupler

Mounting Kit

Quick Installation Guide

Resource CD (User Manual, Utility, 64-CH Monitoring Software)

No liability or responsibility for any errors or omissions in the content.  
Specifications are subject to change without notice.  
All mentioned brand names are registered trademarks and property of their owners.  
Copyright © Digital Data Communications GmbH, Germany. All Rights Reserved.