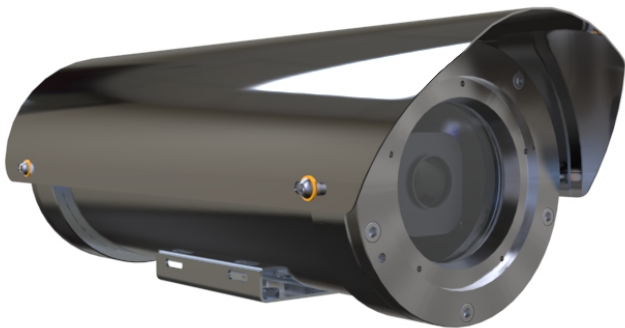


XF40-Q1765 Explosion Protected Fixed Network Camera

Network 1080p fixed camera suitable for hazardous areas

XF40-Q1765 Explosion Protected Fixed Network Camera is suitable for onshore, offshore, marine and heavy industrial environments. It features a 316L stainless steel housing certified for hazardous areas according to for example ATEX, IECEx and cLCus. The housing prevents any inside sparks or explosions from escaping and igniting vapors, gases, dust or fibers in the surrounding air. XF40-Q1765 provides superb image quality and color fidelity and a high level of flexible integration with other equipment, such as access control and fire alarms. It offers flexible remote accessibility, using any existing IP-based networks. XF40-Q1765 for hazardous areas is a complement to Axis' wide range of network cameras that can be used in safe areas.

- > IP66- and IP67-rated
- > Wide temperature ranges
- > Full HDTV 1080p resolution
- > 18x zoom and autofocus
- > Wide dynamic range



XF40-Q1765 Explosion Protected Fixed Network Camera

Models	XF40-Q1765 ATEX IECEX CLUS XF40-Q1765 CCOE XF40-Q1765 CERTEX XF40-Q1765 CNEX XF40-Q1765 CSA XF40-Q1765 EAC XF40-Q1765 INMETRO All models are also available for temperatures down to -60 °C (-76 °F)	Video recording to edge storage Pre- and post-alarm video buffering Status LED indicator PTZ preset, Overlay text Day/Night vision mode
Camera		
Image sensor	Progressive scan RGB CMOS 1/2.9"	
Lens	4.7–84.6 mm, F1.6–2.8 Horizontal angle of view 59°–4° Vertical angle of view 35°–2° Autofocus	
Day and night	Automatically removable infrared-cut filter	
Minimum illumination	Color: 0.5 lux at 30 IRE F1.6 B/W: 0.04 lux at 30 IRE F1.6	
Shutter time	1/28000 s to 2 s	
Pan/Tilt/Zoom	18x optical zoom and 12x digital zoom, total 216x zoom 64 preset positions	
Video		
Video compression	H.264 (MPEG-4 Part 10/AVC) Baseline, and Main profiles Motion JPEG	
Resolutions	1920x1080 HDTV 1080p to 320x180	
Frame rate	Up to 30/25 fps (60/50 Hz) in all resolutions	
Video streaming	Multiple, individually configurable streams in H.264 and Motion JPEG Controllable frame rate and bandwidth VBR/CBR H.264	
Image settings	Manual shutter time, Compression, Color, Brightness, Sharpness, White balance, Exposure control, Exposure zones, Backlight compensation, WDR-dynamic contrast, Fine tuning of behavior at low light, Rotation, Text and image overlay, Day/night shift level	
Network		
Security	Password protection, IP address filtering, HTTPS ^a encryption, IEEE 802.1X ^a network access control, Digest authentication, User access log, Centralized Certificate Management	
Supported protocols	IPv4/v6, HTTP, HTTPS ^a , SSL/TLS ^a , QoS Layer 3 DiffServ, FTP, CIFS/SMB, SMTP, Bonjour, UPnP TM , SNMP v1/v2c/v3 (MIB-II), DNS, DynDNS, NTP, RTSP, RTP, SFTP, TCP, UDP, IGMP, RTCP, ICMP, DHCP, ARP, SOCKS, SSH	
System integration		
Application Programming Interface	Open API for software integration, including VAPIX [®] and AXIS Camera Application Platform; specifications at www.axis.com AXIS Video Hosting System (AVHS) with One-Click Connection ONVIF Profile S, specification at www.onvif.org	
Analytics	Video motion detection, Active tampering alarm Support for AXIS Camera Application Platform enabling installation of AXIS Video Motion Detection 3, AXIS Cross Line Detection, AXIS Digital Autotracking and third-party applications, see www.axis.com/acap	
Event triggers	Analytics, Edge storage events	
Event actions	File upload: FTP, SFTP, HTTP, HTTPS network share and email Notification: email, HTTP, HTTPS and TCP and SNMP trap	
Data streaming	Event data	
Built-in installation aids	Pixel counter	
General		
Casing	IP66- and IP67-rated Electro-polished 316L stainless steel casing for maximum corrosion protection Toughened glass protective window	
Memory	256 MB RAM, 128 MB Flash	
Power	24 V AC Max consumption: 80 W	
Edge storage	Support for recording to dedicated network-attached storage (NAS) For NAS recommendations see www.axis.com	
Operating conditions	XF40-Q1765: -40 °C to +60 °C (-40 °F to 140 °F) XF40-Q1765 -60C: -60 °C to +40 °C (-76 °F to 104 °F) Humidity 10–100% RH (condensing)	
Approvals	EN 55022 Class A, EN 61000-3-2, EN 61000-3-3, EN 55024, EN 61000-6-1, EN 61000-6-2, FCC Part 15 Subpart B Class A, ICES-003 Class A, C-tick AS/NZS CISPR 22 Class A, IEC/EN 60950-1, IEC/EN 60950-22, EN 50121-4, IEC/EN 60529 IP66, NEMA 250 Type 4x, IEC/EN 62262 IK10, IK8, ATEX: II 2 G Ex d op pr IIC II 2 D Ex tb IIIC T135°C Db IP66/67, IECEx: Ex d IIC -60°C ≤ Ta ≤ +60°C Gb Ex tb IIIC T130°C Db IP66/67, Imetro: Ex d IIC -60°C ≤ Ta ≤ +60°C Gb Ex tb IIIC T130°C Db IP66/67, Class 1 Zone 1 AEx d IIC Gb -60°C ≤ Ta ≤ +60°C IP66/67, Class 1 Division 1 Groups B, C, D, -60°C ≤ Ta ≤ +60°C / Class II Division 1 Groups E, F, G, IP66/67, Ex d IIC -60°C ≤ Ta ≤ +60°C, IP66/67, GOST-R: Ex d IIC -60°C ≤ Ta ≤ +60°C Gb Ex tb IIIC T130°C Db IP6x - POCC GB.ГБ.800659, IP66/67, CCOE: Ex d IIC -60°C ≤ Ta ≤ +60°C Gb Ex tb IIIC T130°C Db IP6x - P306928/1/2, IP66/67, CNEX: Ex d IIC Gb Ex tb IIIC 135C Db, IP66/67	
Dimensions	165x176x480 mm (6½x7x19 in)	
Weight	14 kg (31 lb)	
Included accessories	Sunshield, Installation Guide, Windows decoder 1-user license	
Optional accessories	Water tank pressurized Power supply cabinet Explosion protected cables in various lengths Mounting accessories For more accessories, see www.axis.com	
Video management software	AXIS Camera Companion, AXIS Camera Station, Video management software from Axis' Application Development Partners available on www.axis.com/techsup/software	
Languages	German, French, Spanish, Italian, Russian, Simplified Chinese, Japanese, Korean, Portuguese	
Warranty	Axis 3-year warranty and AXIS Extended Warranty option, see www.axis.com/warranty	

a. This product includes software developed by the OpenSSL Project for use in the OpenSSL Toolkit. (www.openssl.org), and cryptographic software written by Eric Young (ey@cryptsoft.com).

More information is available at www.axis.com