

HP Z22n 21.5-inch IPS Display



Create a captivating view with minimal visual disruptions with the HP Z22n Narrow Bezel IPS Display. Nearly borderless on three sides, it also includes factory color calibration for consistent color between projects and displays and flexible device connectivity.



Impressive continuous imagery.

- Enable virtually seamless views from almost anywhere in the room with a display that's almost borderless on three sides and has 178-degree viewing angle IPS technology.

Color accuracy the first time and every time.

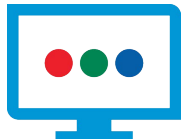
- Maintain visual integrity across all of your displays with a 95% sRGB color gamut that is calibrated at the factory.

Zero bright sub-pixel defects, guaranteed.

- Don't just take our word for it. We back the display up with a three-year limited warranty, optional HP Care Pack¹, and an HP Pixel Defect Policy that will replace the screen if even one bright sub-pixel fails.²

Featuring

- Keep your PC and device connections close by with integrated HDMI, VGA, DisplayPort, and two USB ports.
- Work comfortably with adjustable tilt, height adjustment, and swivel settings. Use pivot rotation to customize portrait or landscape views when using multiple displays. An integrated HP Quick Release Bracket supports wall mounting.³
- Make the most of your available space by attaching your HP Desktop Mini, HP Chromebox, or select HP Thin Client directly behind the display.⁴ Keep things tidy with an integrated power supply and cable management features.
- Design the screen for how you work, adjust brightness on multiple displays, define and distribute custom settings with an executable file, and deter theft with HP Display Assistant software.
- Reduce power consumption and help lower your costs with an energy-efficient design.



HP Z22n 21.5-inch IPS Display Specifications Table



Product Number	M2J71A4
Display Size (diagonal)	54.6 cm (21.5")
Display Type	IPS w/LED backlight
Panel Active Area	18.74 x 10.54 in; 476.064 x 267.786 mm
Viewing Angle	178° horizontal; 178° vertical
Brightness	250 cd/m ² ¹
Contrast Ratio	1000:1 static; 5000000:1 dynamic ¹
Response Time	7 ms gray to gray ¹
Aspect Ratio	16:9
Native Resolution	1920 x 1080 @ 60 Hz
Resolutions Supported	1920 x 1080; 1280 x 1024; 1280 x 800; 1440 x 900; 1680 x 1050; 1600 x 900; 1280 x 720; 1024 x 768; 800 x 600; 640 x 480
Display Features	Anti-glare; In plane switching; Language selection; LED Backlights; On-screen controls; Pivot rotation; Plug and Play; User programmable
User Controls	Menu; Minus ("−"); Plus ("+"); Input Contro; OK/Auto; Power
Input Signal	1 VGA; 1 HDMI (with HDCP support); 1 DisplayPort 1.2 (with HDCP support);
Ports and Connectors	3 USB 2.0 (two downstream and one upstream) ¹
Input Power	Input voltage: 100 to 240 VAC
Power Consumption	34.7 W (maximum), 22.9 W (typical), 0.5 W (standby)
Dimensions with Stand (W x D x H)	19.23 x 7.44 x 18.8 in 48.81 x 18.9 x 47.74 cm
Dimensions without Stand (W x D x H)	19.23 x 2.06 x 11.56 in 48.81 x 5.22 x 29.36 cm Without stand
Weight	10.47 lb 4.75 kg With stand
Ergonomic Features	Tilt: −5 to +30°; Swivel: ±45°; Height: 150 mm; Pivot rotation: 90°
Environmental	Arsenic-free display glass; Mercury-free display backlights; Low halogen ²
Energy Efficiency Compliance	ENERGY STAR® certified
What's in the box	Monitor; AC power cord; USB cable; DisplayPort cable; CD (includes User Guide, warranty, drivers); HP Display Assistant software

See important legal disclaimers on the last page

Accessories and services (not included)

HP Adjustable Dual Display Stand



The HP Adjustable Dual Display Stand allows you to use two displays to maximize your productivity and optimize efficiency. Either or both displays can be rotated to landscape or portrait orientation, and the stand is depth-, height-, tilt-, and angle-adjustable so you can view both screens at eye-level as well as slightly facing each other, letting you track multiple applications and information sources at the same time. Integrated base rollers let you rotate the stand so you can more easily share your work.

Product number: AW664AA

HP Single Monitor Arm



The HP Single Monitor Arm is the perfect desk accessory for your work life. Sleek and streamlined, the HP Single Monitor Arm is designed to complement the way you work.

Product number: BT861AA

HP UHD USB Graphics Adapter



Boost your productivity by extending or mirroring your desktop to a UHD display with the HP UHD USB Graphics Adapter.

Product number: N2U81AA

HP Business PC Security Lock v2 Kit



Help prevent chassis tampering and secure your PC and display in workspaces and public areas with the HP Business PC Security Lock v2 Kit.

Product number: N3R93AA

HP PC Mounting Bracket for Monitors



Customize an altogether better solution with the HP PC Mounting Bracket for Monitors, which lets you attach your HP Desktop Mini, HP Chromebox, or select HP Thin Client directly behind select HP Z Displays and EliteDisplays.

Product number: N6N00AA

HP LCD Speaker Bar



The LCD Speaker Bar seamlessly attached to the bezel of the HP Business Monitor and provides full multimedia capabilities.

Product number: NQ576AA

Messaging Footnotes

¹ HP Care Packs are sold separately. Service levels and response times for HP Care Packs may vary depending on your geographic location. Service starts on date of hardware purchase. Restrictions and limitations apply. For details, visit www.hp.com/go/cpc. HP Services are governed by the applicable HP terms and conditions of service provided or indicated to Customer at the time of purchase. Customer may have additional statutory rights according to applicable local laws, and such rights are not in any way affected by the HP terms and conditions of service or the HP Limited Warranty provided with your HP Product.

² The HP Pixel Policy allows no bright sub-pixel defects for this display. For complete details, see <http://support.hp.com/us-en/document/c00288895>.

³ Mounting hardware sold separately.

⁴ Requires HP PC Mounting Bracket for Monitors, sold separately. See product QuickSpecs for exact PC and thin client compatibility.

Technical Specifications Footnotes

¹ All specifications represent the typical specifications provided by HP's component manufacturers, actual performance may vary either higher or lower.

² External power supplies, power cords, cables and peripherals are not Low Halogen. Service parts obtained after purchase may not be Low Halogen.

Sign up for updates
hp.com/go/getupdated

Learn more at
hp.com

© Copyright 2015 HP Development Company, L.P. The information contained herein is subject to change without notice. The only warranties for HP products and services are set forth in the express warranty statements accompanying such products and services. Nothing herein should be construed as constituting an additional warranty. HP shall not be liable for technical or editorial errors or omissions contained herein.

ENERGY STAR® and the ENERGY STAR® mark are registered trademarks of the U.S. Environmental Protection Agency.

