



Photon Series

Professional-Grade IP Surveillance Cameras

EnGenius Photon Series, of professional-grade IP Surveillance Cameras, offer superior, high definition image performance in deployments that need 24/7 monitoring. Retail businesses, corporate or school campuses, multi-tenant housing and luxury estates, are all more secure with a Photon Series IP Camera situated at strategic access points.

With built-in infrared (IR) lighting and motion detection, properties can be monitored day or night in low light or complete darkness. Remotely view cameras and receive email alerts and 10-second video clips directly to an iPhone®, iPad® or Android™ smartphone or tablet for global 24/7 surveillance with EnGenius' EnViewer™ mobile App.

Extend your camera network to maximize coverage virtually anywhere. Choose the Photon IP Camera or Wireless IP Surveillance System that best meets your surveillance needs, including indoors or outdoors with wired, and near or long-range wireless network access.

Photon Series IP Surveillance Cameras are ideal for deployment in:

- > Luxury Homes & Estates
- > Small Businesses
- > Small-to-Medium Corporate Campuses
- > Transportation Hubs – Airports, Bus Depots, & Train Stations
- > Schools, Colleges & Universities
- > Stadiums & Arenas
- > Multi-Tenant Dwellings
- > Hotels & Resorts
- > Warehouse Operations
- > Military Bases
- > Medical Centers
- > Parks & Golf Courses
- > Parking Structures
- > Shopping Malls

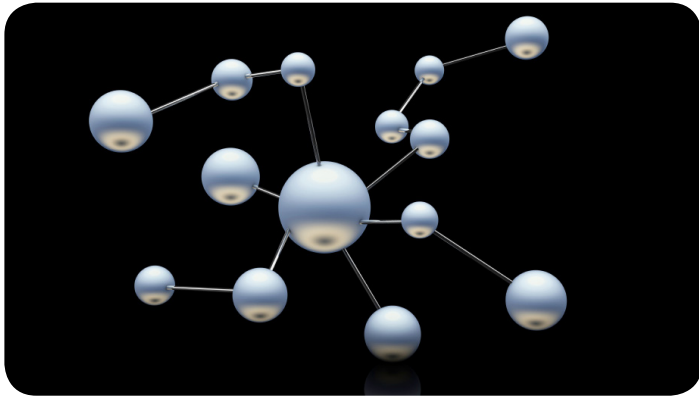
Features

- > Wide angle CMOS lens captures high-res images over broader areas
- > Mechanical IR cut filters & built-in IR illuminators for night viewing to 32-ft/10m
- > High-speed wired & 802.11n wireless cameras for flexible deployments
- > Power-over-Ethernet (802.11af) extends power to unwired areas
- > H.264 Video provides 1280x720 HD performance with less bandwidth
- > Triple Codecs: H.264/MPEG-4 & MJPEG to 30 fps
- > Dual-stream supports varying frame-rates & resolutions
- > Includes 16-Channel VM Software with live monitoring
- > Receive alarm alerts directly to your mobile device for rapid response
- > Remotely view cameras from your mobile device with free EnViewer mobile App
- > ONVIF-compliant for easy integration with 3rd party products
- > Point-to-point & point-to-multipoint surveillance over large distances
- > IP66-rated waterproof & dustproof casing withstands harsh climates



Network Integration

Security concerns top the agenda of many organizations today leading to an increased presence of surveillance cameras in homes and businesses alike. As surveillance systems become an integral part of the network, the need to quickly integrate and monitor them along with existing networks becomes increasingly important. EnGenius **Photon Series IP Cameras** seamlessly integrates quickly and easily with EnGenius' complete line of wired and wireless networking solutions.



IP Cameras - Superior Surveillance Technology

Today's surveillance cameras are far superior to their older analog CCTV cousins, providing the highest quality digital images along with the highest frame rates for clearer faces, sharper details and smoother video. Also unlike their analog counterparts, IP cameras integrate easily into existing wired or wireless Ethernet networks and offer:

Simplified Installation – Plug-and-play configuration is standard for IP Cameras. Provide power, network connectivity and stream video over a single CAT5/6 cable or go wireless and simply plug the camera into an electrical outlet vs. the configuration time and multiple cables needed for a single analog camera installation.

Elimination of Unnecessary Hardware – Connect to existing network switches and store video footage directly to network connected computers or storage servers (NAS), eliminating the need for analog to digital conversion hardware such as video encoders and Digital Video Recorders (DVR).

Affordable Scalability – Add cameras as needed, with no limits associated to your DVR's camera connection capacity.

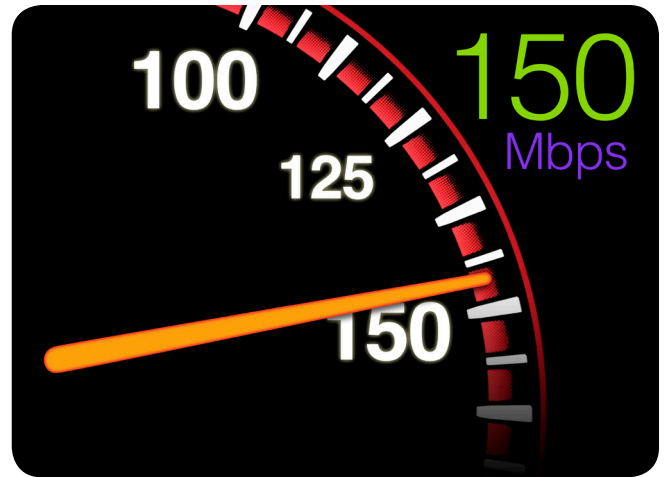
Greater Functionality – Easily view IP camera feeds remotely via the Internet, receive automated alerts via email and integrate with feature-rich monitoring software for Intelligent Surveillance; features only previously available with expensive analog video encoder/DVR systems.

Open Platform – Utilizing a standards-based architecture ensures IP cameras and Video Management Software is interoperable with a wider range of network devices, including Windows-based PCs, as compared to proprietary Network Video Recorders (NVRs) and DVRs.

Improved Image Quality – On-camera digital processors optimize video, transmitting consistent, high-quality digital images without degradation, compared to lower quality analog CCTV video, which must be converted to digital by the encoder or DVR, losing even more image quality along the way.

Wireless Cameras offer Affordability, Flexibility & Scalability in Deployment Scenarios

Choose an EnGenius Photon Series Wireless Camera for even greater flexibility in the most demanding deployments. Eliminate the need for expensive trenching or concrete cutting for CCTV cable-runs in outdoor perimeter camera placements, and cabling through walls, attics or floors. Wireless Cameras also offer a greater level of scalability and are easily added to an existing system with minimal planning.



Photon Wireless IP Cameras support fast wireless speeds up to 150 Mbps, providing high-speed performance, maximizing HD video transmissions.

Wireless IP Surveillance System

Not all surveillance challenges fit into a neat little box. Campuses, civic centers, shopping complexes, plus indoor and outdoor arenas can be crowded with buildings and other obstructions, and may be saturated with a spectrum of RF signals. EnGenius Wireless IP Surveillance System is designed to provide long-range, point-to-point and point-to-multipoint surveillance coverage for expansive venues, transmitting streaming video at stable, robust wireless speeds over great distances – up to 5 miles point-to-point in challenging environments.

Available in both Wireless N300 speeds, the 2.4 GHz IP Surveillance System (EDS8012) or the 5 GHz IP Surveillance System (EDS8015), is designed to withstand extreme environmental conditions and features certified IP-rated housing.



Highly Defined Resolution

All Photon Series IP Surveillance Cameras support the latest Progressive Scan CMOS sensor technology, providing crystal clear details in moving objects like car license plates or facial features making these important details less ambiguous. With High Definition quality video running 720p at 30 frames per second, Photon IP Cameras provide superior quality and smooth video over analog CCTV with smaller file sizes, which is ideal for viewing video on mobile devices, sending via email and maximizing available storage space.



Optimize Images in Varied Lighting

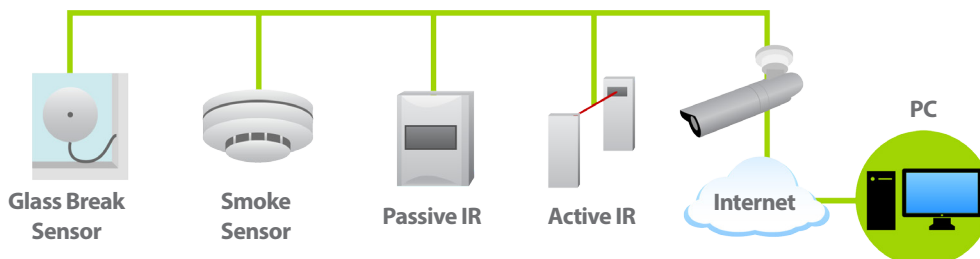
With Wide Dynamic Range technology, select Photon Series IP Cameras can be fine-tuned to ensure an optimal level of configuration for customized lighting environments, providing clear images, even in highly backlit areas indoors and out.



Alarm Alerts

Integrate IP camera with 3rd party digital alarms, sensors or other electronic devices that activate when motion detectors are triggered, serving as an added deterrent to prolonged suspicious activity.

Connection to one digital input device



Excellent Performance in Harsh Environments

Need to deploy surveillance cameras in harsh environments? Select Photon IP Cameras include IP66-rated dust and waterproof housing designed to withstand harsh environmental conditions. With an included cable management bracket, each device is protected and accompanying cables are hidden from damage while offering a clean aesthetic.

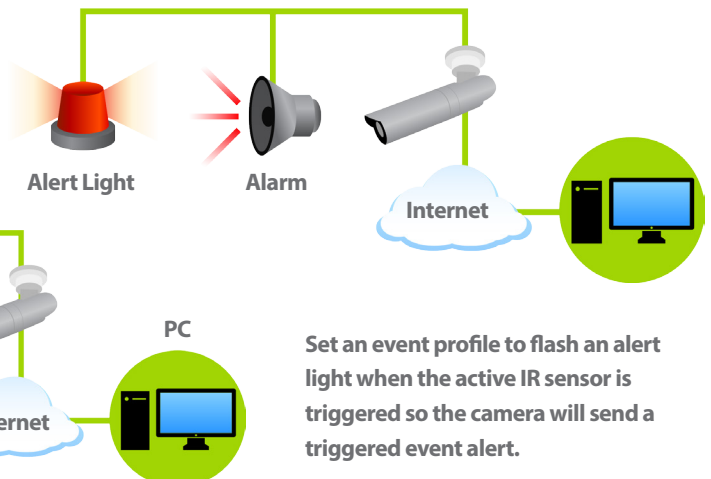


Place Almost Anywhere with PoE Support

Extend your camera network to maximize coverage virtually anywhere. Select the Photon IP Camera that best meets your surveillance needs including indoor, outdoor, wired or wireless network access. All cameras are 802.3af-compliant and can be powered via Power-over-Ethernet (PoE), eliminating the need for a nearby electrical outlet.



Connection to one digital output device



Push Notification

Remotely view and monitor up to four (4) cameras simultaneously from anywhere and instantly record video with EnGenius' EnViewer mobile App. View, record and receive triggered event alerts directly to your smartphone or tablet for instant notifications of events-in-progress with free downloadable App for Android and iOS.



24/7 Vigilance

Monitor your business during or after hours, even in low light or in complete darkness up to 32-feet, with EnGenius Day/Night IP Surveillance Cameras. Receive Motion and Audio Detection alerts (on select models) and recordings directly to your smartphone or iPad ensuring a quick response to suspicious activity.

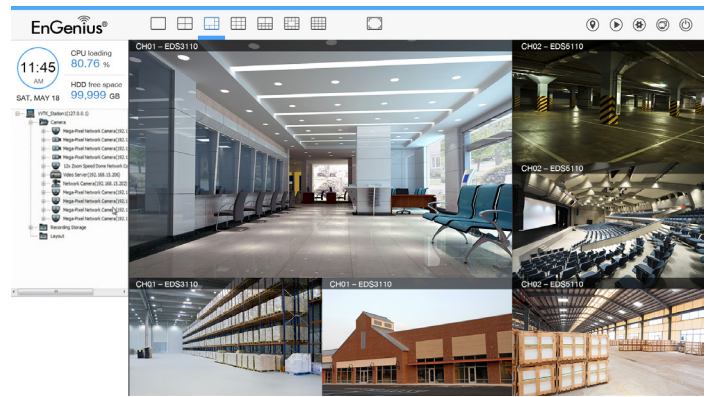
Zone Coverage

Set precise zone coverage within designated areas to record activity or detect motion near entryways or around registers and loading docks within each camera's field of view. Customize sensitivity in each zone for greater control and even set Motion and Audio Detection Alerts to trigger a connected audible alarm (on select models).



16-Channel Video Management Software (VMS)

Unlike proprietary NVRs and DVRs that are expensive to purchase, maintain and upgrade, EnGenius Video Management Software comes free with all Photon Series IP Surveillance Cameras, further enhancing the line's affordability and lower total cost of ownership.



- > Optional split-screen camera view
- > Monitor up to 16 cameras simultaneously
- > View live monitoring, record video and playback options
- > Quick search of archived video via time bar

Enterprise Viewing Capacity

EnGenius VMS Software allows personnel to easily monitor the entire camera network, whether in a multi-building environment or at an entirely separate location. View feeds from up to 16 cameras concurrently, in real-time, and plan for future expansion to 32 or 64-channel capacities with future software upgrades, available via www.engenius-tech.com.

Conduct basic configuration and initiate firmware upgrades right from your desktop and import your office building's floor plan to create a camera location map through eMap. Schedule recordings based on time or date, such as after hours or when shipments are due to arrive. Setup and configuration is streamlined with VMS' Discovery Tool, which quickly locates EnGenius IP Cameras.



- > At-a-glance floor plan view
- > Visible monitoring coverage for easy deployment
- > Quick view - monitor on floor plan with the click of a mouse

Photon Series IP Surveillance Cameras

			
Models	EDS5110	EDS5115	EDS6115
Camera Type	Bullet	Bullet	Mini-Dome
LAN Interface	Wired	Wired/Wireless 802.11b/g/n	Wired/Wireless 802.11b/g/n
Ethernet Ports	1 x 10/100Mbps	1 x 10/100Mbps	1 x 10/100Mbps
Weatherproof	Yes (indoors/outdoors)	Yes (indoors/outdoors)	No (indoors only)
Night Vision	✓	✓	✓
IR LEDs	12-pieces	12-pieces	12-pieces
HD Resolution	1280 x 720P	1280 x 720P	1280 x 720P
Progressive Scan CMOS Image Sensor	¼" 1-Megapixel	¼" 1-Megapixel	¼" 1-Megapixel
Frame Rate	30 fps	30 fps	30 fps
Motion Detection	✓	✓	✓
Field of View (diagonal)	62-degrees	62-degrees	86.8-degrees
Wide Dynamic Range Technology	✓	✓	-
802.3af-PoE Compliant	✓	✓	✓
On-board MicroSD	-	-	✓
Built-in Microphone	-	-	✓
Remote Access via EnViewer Mobile App	✓	✓	✓
Email Notifications	✓	✓	✓
Included VM Software	✓	✓	✓

Technical Specifications IP Cameras

Type EDS5110 / EDS5115 Bullet EDS6115 Mini-Dome	Day/Night Removable Mechanical IR-Cut Filter	Physical Interface (All-In-One Cable) EDS5110 / EDS5115 1 x Cable Management Bracket 1 x All-in-One Cable 1 x RJ45 10/100 Base-T (802.3af PoE) 1 x Reboot/Reset Button 1 x Alarm-In/Out 1 x DC Jack (12V/1A)
Image Sensor ¼" 1-Megapixel Progressive Scan CMOS Image Sensor	Minimum Illumination EDS5110 / EDS5115 Color (IR-Off): 0.5 lux @ F1.5 B/W (IR-On): 0 lux @ F1.5 EDS6115 Color (IR-Off): 0.5 lux @ F1.8 B/W (IR-On): 0 lux @ F1.8	EDS6115 1 x Micro SD/SDHC Slot/Reset Button 1 x Manual Pan/Tilt Lens Tool 1 x Manual Pan/Tilt Adjuster 1 x Built-In Microphone 1 x All-In-One Cable 1 x RJ45 10/100 Base-T (802.3af PoE) 1 x DC Jack (12V/1A) 1 x Reboot/WPS/Reset Button
Lens Fixed Board Lens Fixed-Focus EDS5110 / EDS5115 4 mm @ F1.5 EDS6115 3.3 mm @ F1.8	IR Illuminator 12 pc IR Illuminator LEDs, Effective up to 32ft/10m	
F.O.V. EDS5110 / EDS5115 62° (diagonal) EDS6115 86.8° (diagonal)	Shutter Time 1/7.5 sec. to 1/24,000 sec.	

Technical Specifications IP Cameras

Power Input
Power Input: 12V/1A/PoE 48V
Video
Compression
H.264/MPEG4/MJPEG
Stream
2x Video Streams
Frame Rates
Up to 30 fps at 1280 x 720p
Image Settings
Adjustable Image Size, Quality & Bit Rate
EDS5110 / EDS5115
WDR (Wide Dynamic Range) Technology
Configurable
Brightness
Sharpness
Contrast
White Balance
Saturation
Exposure
AGC/AWB/AES
Flip & Mirror
Time Stamp & Text Caption Overlay
Auto/Manual Day & Night Mode
EDS6115
Audio
Audio Streaming
1-Way
Compression
G.711
Interface
Built-In Microphone
Networking
Network
10/100 Mbps Ethernet, RJ-45
Power-over-Ethernet (PoE 802.3af class 2)
Wireless Standard
EDS5115 / EDS6115
IEEE 802.11b/g/n
Antenna
EDS5115 2 dBi High-Gain External Antenna
EDS6115 3 dBi High-Gain Internal Antenna
EnGenius DDNS
Auto NAT Pass Through/ UPnP Traversal

Protocol
IPv4, TCP, UDP, DHCP, NTP, DNS, DDNS, SMTP, FTP, HTTP, UPnP, NFS/Samba client, QoS/DSCP, RTP, RTSP, 3GPP, PPPoE
ONVIF Compatible (Profile S)
Security
Admin/User Account Level
Password Protection
EDS5115 / EDS6115
WEP/WPA/WPA2-PSK
Schedule Recording
Alarm & Event/Recording
Event Trigger
Motion/Alarm Input Detection
Event Notification
Email/Push Notifications
Event Actions
File Upload to NFS/SAMBA/FTP/SMT, EnGenius Cloud & Play Audio
Video Playback (PC/iPhone®/Android™)
EnGenius Simple Smart Recording (Only for EnGenius Cloud Series Routers/Gateways)
Video Buffer
5-Seconds Pre-Alarm & Post-Alarm
Mobile Apps Supported
iPhone/iPad/Android Devices
Video Management Software
Viewing System Requirements
Operating System
Microsoft Windows XP/2000/2003/Vista/2007/2008
Web Browsers
IE, Safari, Chrome, Firefox, Opera
View Clients
Live Viewing For up to 5 Clients
Environmental & Physical
Temperature Range
EDS5110 / EDS5115
Operating: -4° F to 122° F (-20°C to 50° C)
Storage: -40° F to 140° F (-40° to 60° C)
EDS6115
Operating: 32° F to 104° F (0°C to 45° C)
Storage: -4° F to 140° F (-20° to 60° C)

Common Key Features

- > Camera
 - Progressive Scan CMOS
 - Fixed-Focus Lens
 - Day/Night: Built-In Mechanical IR-Cut Filter
- > Video
 - High-Definition 720p at 30fps
 - Compression: H.264/MPEG/MJPEG
 - Simultaneous Dual-Stream Video
 - Image Settings: Adjustable Image Size, Quality, & Bit Rate Configurable Brightness, Sharpness, Contrast, Saturation, White Balance, & Exposure
- > Network
 - 10/100 Mbps Ethernet
 - 802.11n Wireless
- > Security
 - Wireless Password Protection
 - IP Address Filtering
 - User Access Log
- > Alarm & Event/Recording
 - Alarm: Motion Detection
 - Event Actions: File Upload to FTP, SMB, SMTP, Mobile App, EnGenius Cloud Router
 - Notification: Email, Push Notifications (Mobile Apps Only)
 - Video Playback (PC/iPhone®/iPad®/Android™)
 - EnGenius Smart Recording (EnGenius Cloud Series Routers Only)
 - Mobile Apps Supported: iPhone®/iPad®/Android™ Devices

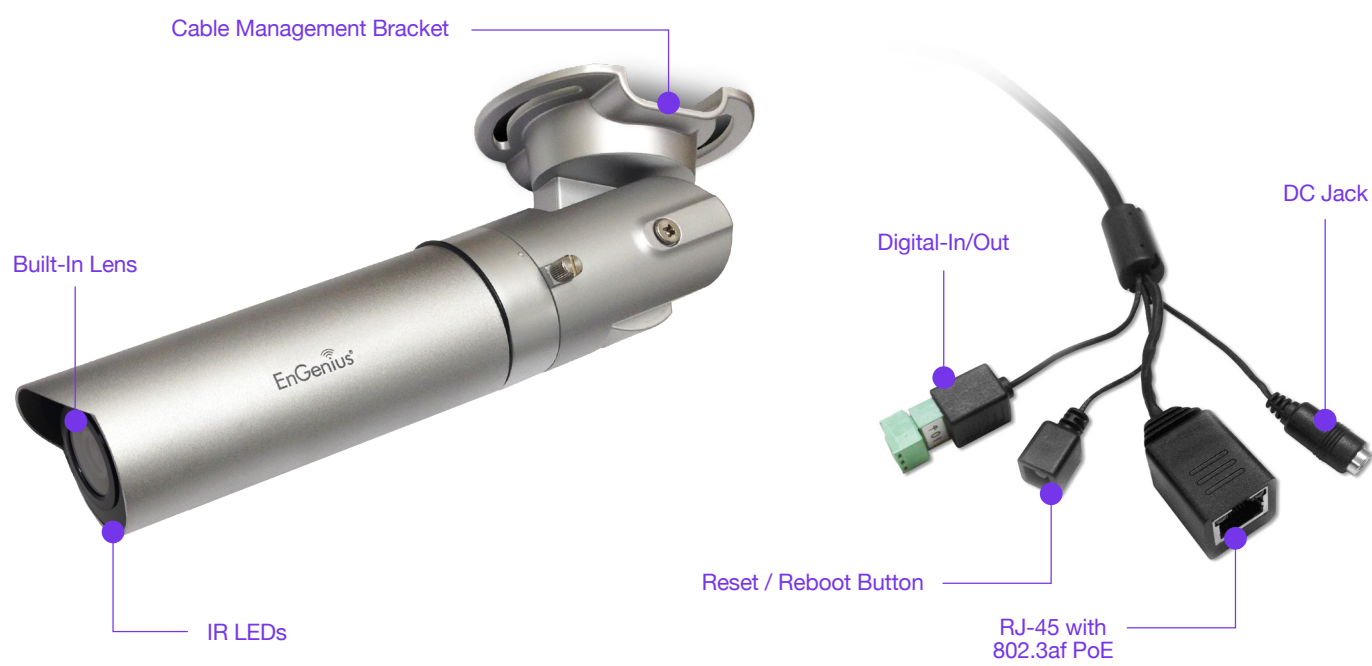
Technical Specifications IP Cameras continued

Humidity (non-condensing)
Operating: 80% or less
Waterproof
EDS5110 / EDS5115 IP66-Rated Enclosure
Dimensions & Weights
EDS5110 / EDS5115
Device with Bracket
Weight: .69 lbs. (.312 kg)
Length: 8.2" (210 mm)
Width: 2.5" (65 mm)
Height: 2.9" (75 mm)
EDS6115
Weight: 0.50 lbs. (228 g)
Width: 2.57" (65.3 mm)
Length: 3.77" (96 mm)
Height: 2.57" (65.3 mm)

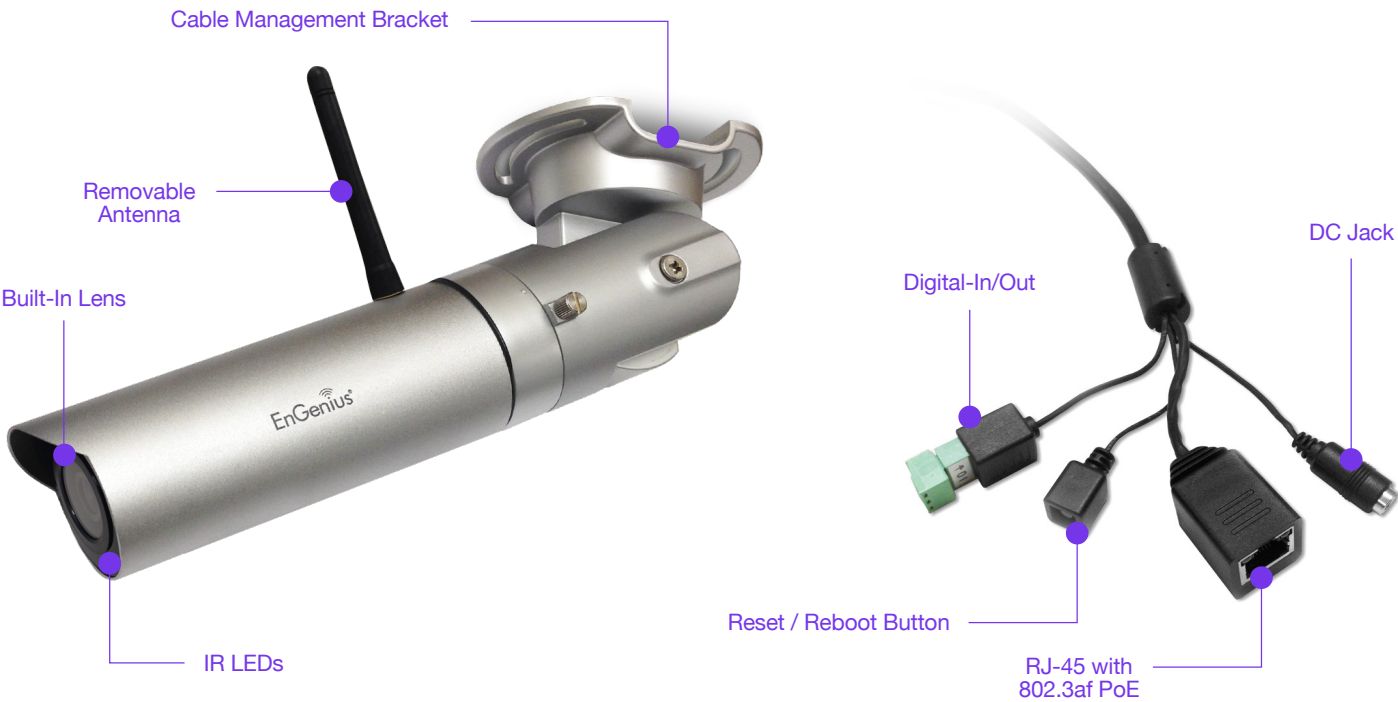
Package Contents:
EDS5110 / EDS5115
Bullet IP Camera
Mounting Kit
RJ-45 Ethernet Cable (10/100 BASE-T 802.3af PoE)
Quick Installation Guide
QR Code Label
Terminal Block for Alarm Input/Output
Power Adapter
EDS5115
Detachable Antenna
EDS6115
1MP Wi-Fi Dome IP Camera
Mounting Kit
RJ-45 Ethernet Cable (10/100 Base-T 802.3af PoE)
Quick Installation Guide
QR Code Label
Power Adapter
CD with User Manual

Certifications
FCC, CE
Warranty
1 Year

EDS5110 IR Bullet IP Camera



EDS5115 Wi-Fi Bullet IP Camera



EDS6115 Wi-Fi Mini Dome IP Camera



EnGenius Wireless IP Surveillance System



Models	EDS8012	EDS8015
Standards	802.11b/g/n	802.11a/n
Frequency	2.4 GHz	5 GHz
Data Rates	300 Mbps	300 Mbps
Radio Chains/Streams	2 x 2	2 x 2
RF Output Power	26 dBm	26 dBm
Ingress Protection (AP/Camera)	55/66	55/66
Fast Ethernet (10/100 Mbps)	✓	✓
Secondary Ethernet Port	✓	✓
Integrated Antennas	13 dBi	19 dBi
Camera	1 MP	1 MP
IR Illuminators	12 pcs	12 pcs

Technical Specifications Long-Range Wireless Outdoor Access Point/Client Bridge

RF Frequency Band EDS8012 2.4 GHz EDS8015 5 GHz	EDS8012 continued 2.4 GHz (P2) - Peak Antenna Gain: 13 dBi - Polarization: Linear - Horizontal Beam Width: 61° - Elevation Beam-Width: 35° - VSWR: 1:2.0 EDS8015 5 GHz (P1) - Average Antenna Gain: 19 dBi - Polarization: Linear - Azimuth Beam Width: 30° - Elevation Beam-Width: 18° - VSWR: 1:2.0 5 GHz (P2) - Peak Antenna Gain: 19 dBi - Polarization: Linear - Horizontal Beam Width: 18° - Elevation Beam-Width: 30° - VSWR: 1:2.0	Data Rate Up to 300 Mbps
Standard EDS8012 802.11b/g/n EDS8015 802.11a/n	Operation Modes Access Point Client Bridge WDS Bridge	Transmit Power Up to 26 dBm Up to 400 mW Max Power is limited by regulatory power
Physical Interface AP Device 2 x 10/100 BASE-T Ethernet Ports 1 x Port supports 24V Proprietary PoE Input 1 x Port supports extension of an Internet signal 1 x Reset Button LED Signal 1 x Power 1 x LAN 1 1 x LAN 2 1 x WLAN	Radio I EDS8012 11b/g/n: 2.412-2.472 GHz EDS8015 11a/n: 5.180-5.825 GHz	Supported Radio Technologies EDS8012 802.11b: Direct-Sequence Spread-Spectrum (DSSS) 802.11n: Orthogonal Frequency-Division Multiplexing (OFDM) 802.11n: with 5/10/20/40 MHz Channel Width 802.11n: with 5/10/20 MHz Channel Width 802.11b/g: with 5/10/20 MHz Channel Width EDS8015 802.11a/n: Orthogonal Frequency-Division Multiplexing (OFDM) 802.11n with 5/10/20/40 MHz Channel Width 802.11a with 5/10/20 MHz Channel Width 802.11a/n: BPSK, QPSK, 16-QAM, 64-QAM
Antenna Internal High-Gain Directional Antenna EDS8012 2.4 GHz (P1) - Average Antenna Gain: 13 dBi - Polarization: Linear - Azimuth Beam Width: 67° - Elevation Beam-Width: 33° - VSWR: 1:2.0	Supported Data Rates (Mbps) EDS8012 802.11b: 1, 2, 5.5, 11 802.11g: 6, 9, 12, 18, 36, 48, 54 802.11n: 6.5~300 (MCS0 to MCS15)	

Technical Specifications Long-Range Wireless Outdoor Access Point/Client Bridge continued

Supported Data Rates (Mbps) continued EDS8015 802.11a: 6, 9, 12, 18, 36, 48, 54 802.11n: 6.5~300 (MCS0 to MCS15)	QoS Compliant with IEEE 802.11e Standard	Environmental & Physical Operating Temperature: -4 °F to 140 °F (-20 °C to 60 °C) Storage: -22 °F to 176 °F (-30 °C to 80 °C)
Power Power Source (PoE Injector): - 24V/.6A Proprietary Compliant Source - Active Ethernet (Power-over-Ethernet, PoE)	Save Configurations as Default	Humidity (non-condensing) Operating: 90% or less Storage: 90% or less
Power Consumption EDS8012 7.2 W EDS8015 7 W	Client Traffic Status	Waterproof IP55-Rated Enclosure
Management Auto Channel Selection - Settings Varies by Regulatory Domains	Control Features RADIUS Accounting Helps Operators Offload 3G to Wi-Fi Seamlessly	Certifications FCC, CE
SSIDs BSSID Supports Four (4) SSIDs	CLI Comments Support Settings Vary by Regulatory Domains	Dimensions & Weights AP/Client Bridge Device Weight: 1.03 lbs. (0.47kg) Depth: 7.4" (190mm) Height: 1.5" (38mm)
VLAN Tagging VLAN Pass-through over WDS Bridge	Distance Control (Ack Timeout) Multicast Supported	
SNMP & MIB v1/v2c/v3 Support MIB I/II and Private MIB	Wi-Fi Scheduler Security WEP Encryption: 64/128/152 bit WPA/WPA2 Enterprise (WPA-EAP using AES) Hide SSID in Beacons MAC Address Filtering (up to 50 addresses) 802.1x Authenticator Wireless STA (Client) Connection List	

Technical Specifications 1-MP Day/Night Bullet IP Surveillance Camera

Camera Image Sensor ¼" 1-Megapixel Progressive Scan CMOS Image Sensor Lens Fixed Board Lens Fixed-Focus, 4 mm @ F1.5 F.O.V. 62° (diagonal) Day/Night Removable Mechanical IR-Cut Filter Minimum Illumination Color (IR-Off): 0.5 lux @ F1.5 B/W (IR-On): 0 lux @ F1.5 IR Illuminator 12 pc IR Illuminator LEDs, Effective up to 32-ft./10m Shutter Time 1/7.5 sec. to 1/24,000 sec.	Physical Interface (All-in-One Cable) 1 x RJ45 10/100 Base-T (802.3af PoE) 1 x Terminal Block for Digital Input/Output 1 x Reset/Reboot Button Power Input Power Input: 12V/1A/, PoE 48V Video Compression H.264/MPEG4/MJPEG Stream 2x Video Streams Frame Rates Up to 30 fps at 1280 x 720p Image Settings Adjustable Image Size, Quality & Bit Rate Configurable Brightness, Sharpness, Contrast, Saturation, Exposure	Image Settings continued AGC/AWB/AES Flip & Mirror Time Stamp & Text Caption Overlay Manual/Auto Day & Night Mode WDR (Wide Dynamic Range) Technology Networking Network 10/100 Mbps Ethernet, RJ-45 Power-over-Ethernet (PoE 802.3af class 2) EnGenius DDNS Auto NAT Pass Through/UPnP Traversal Protocol IPv4, TCP, UDP, DHCP, NTP, DNS, DDNS, SMTP, FTP, HTTP, UPnP, NFS/Samba client, QoS/DSCP, RTP, RTSP, 3GPP, PPPoE ONVIF Compatible (Profile S)
---	--	--

Technical Specifications 1-MP Day/Night Bullet IP Surveillance Camera continued

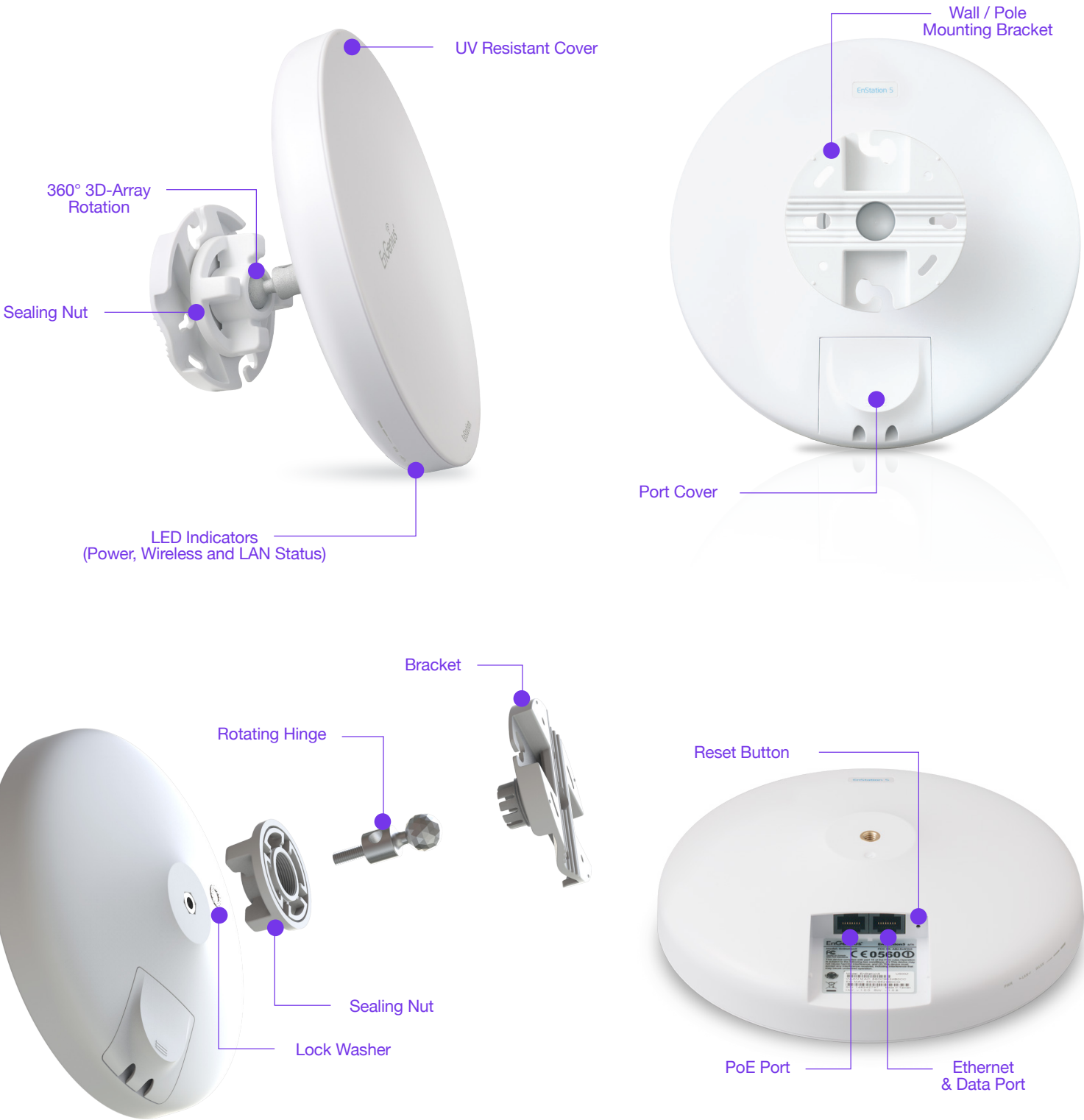
Security	Environmental & Physical	Certifications
Admin/User Account Level	Temperature Range	FCC, CE
	Operating: -4° F to 122° F (-20°C to 50° C)	
Alarm & Event/Recording	Storage: -40° F to 140° F (-40° to 60° C)	
Event Trigger		Warranty
Motion/Alarm-In Detection	Humidity (non-condensing)	1 Year
Event Notification	Operating: 80% or less	
Email/Push Notifications		
Event Actions	Waterproof	
File Upload to NFS/SAMBA/FTP/SMT, EnGenius Cloud & Play Audio	IP66-Rated Enclosure	
Video Playback (PC/iPhone®/Android™)		
EnGenius Simple Smart Recording (Only for EnGenius Cloud Series Routers/Gateways)	Dimensions & Weights	
Video Buffer	IP Camera Device with Bracket	
5-Seconds Pre-Alarm/Post-Alarm	Weight: .69 lbs. (.312 kg)	
Schedule Recording	Length: 8.2" (210mm)	
Mobile Apps Supported	Width: 2.5" (65mm)	
iPhone/iPad/Android Devices	Height: 2.9" (75mm)	
	Package Contents:	
Video Management Software	• 1-Megapixel Bullet IP Camera	
Viewing System Requirements	• 12V/1A Power Adapter	
Operating System	• Mounting Kit	
Microsoft Windows XP/2000/2003/Vista/2007/2008	• RJ-45 Ethernet Cable	
Web Browsers	• Outdoor AP/Bridge	
IE, Safari, Chrome, Firefox, Opera	• PoE Injector (EPE-1212) with Power Adapter (24V/.6A)	
View Clients	• Pole/Wall Mounting Kit	
Live Viewing For up to 5 Clients	• Mounting Screw Set	
	• Quick Installation Guide	

Compatible Products

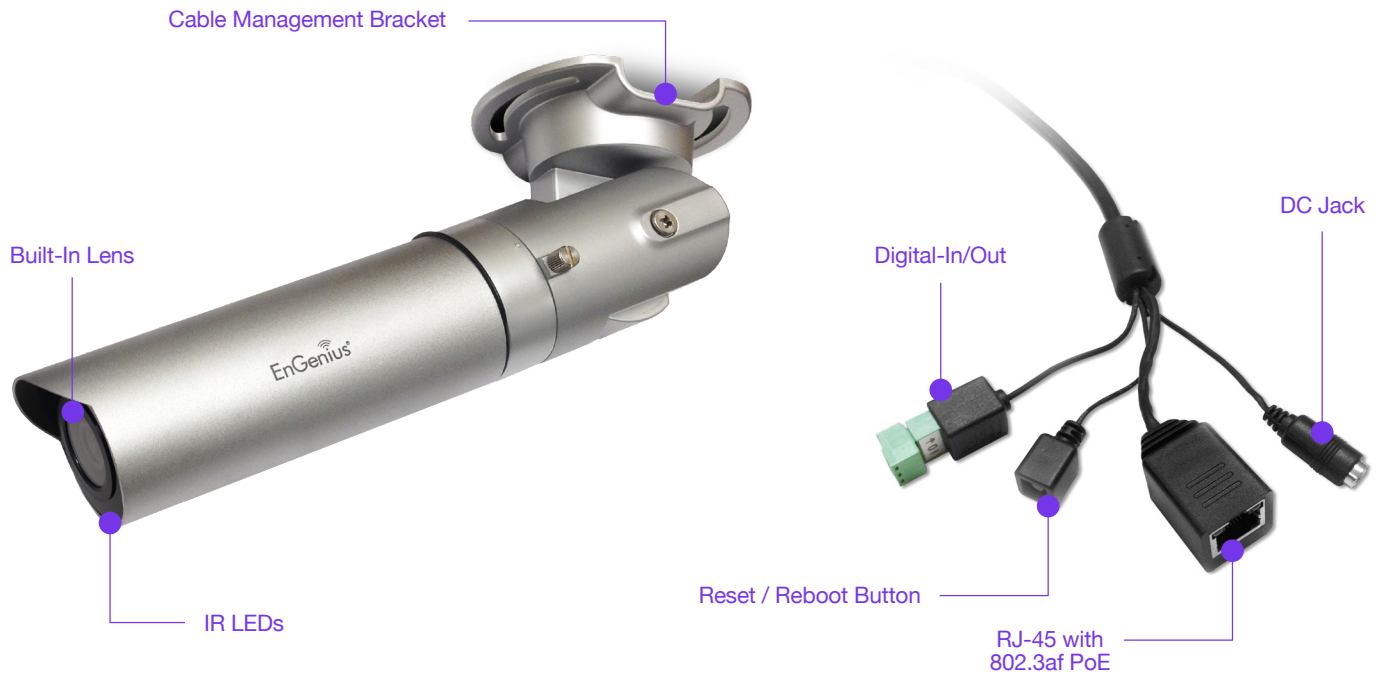
Products	Product Description
EnStation2	Long-Range Wireless 2.4 GHz Outdoor AP/Bridge
EnStation5	Long-Range Wireless 5 GHz Outdoor AP/Bridge
EDS5110	1 MP Day/Night Bullet IP Surveillance Camera

Wireless IP Surveillance System

Outdoor AP/Bridge



Bullet IP Camera



EnGenius Technologies | 1580 Scenic Ave. Costa Mesa, CA 92626

Email: partners@engeniustech.com | Phone: 888-735-7888 | Website: engeniustech.com

Features and specifications subject to change without notice. Trademarks and registered trademarks are the property of their respective owners. For United States of America: Copyright © 2015 EnGenius Technologies, Inc. All rights reserved.
Version 1.0 - 09/16/15

EnGenius®

In the United States of America, use of video or audio equipment for recording the image of a person without their knowledge and consent is prohibited in certain states, commonwealths, municipalities or jurisdictions. The end user assumes all liability for compliance with state, local and federal laws. Product features and specifications or industrial design are subject to change without notice, and actual product appearance may differ from what is depicted on product packaging, on websites, or in marketing material. EnGenius Technologies, Inc. is not responsible for liable for any property loss or damage in any site or deployment where EnGenius camera products are used. Trademarks and registered trademarks are the property of their respective owners. User capacity performance results may vary based on topology configuration, structural and architectural elements, environmental factors, type of data traffic, RF capabilities of client devices, distance, RF interference in the operating environment and other factors. For United States of America: Copyright © 2015 EnGenius Technologies, Inc. All rights reserved.