



IK-WF51A

5MP Indoor Panoramic Dome IP Camera

Indoor Panoramic Views with IR LEDs

The Toshiba IK-WF51A is a 5MP panoramic dome IP camera with integrated IR LEDs. Surround viewing and up to 15fps in full resolution empower the IK-WF51A to cover large indoor areas with a single camera. IR LEDs and an asthetically pleasing form factor make it suitable for retail, casinos and other indoor applications, while ONVIF compliance and PoE/PoE+ ensure compatibility with Toshiba and 3rd party systems.

- 5MP resolution
- Digital WDR and True Day/Night
- Full surround panoramic view
- Integrated IR LEDs
- Ceiling, wall & desktop mount
- Audio capabilities
- MicroSD card for edge recording
- ONVIF compliant for maximum compatibility
- PoE (802.3af) and PoE+ (802.3at)
- On board Dewarping



IK-WF51A

5MP Indoor Panoramic IP Dome

TOSHIBA
Leading Innovation >>>

Camera

Image sensor	1/2.5 inch CMOS 5MP
Effective pixels	2560 x 1920 (4:3)
Lens	Fisheye f=1.5mm, F=2.8
Lens type	Fixed focal M12
Angle of view	175° horizontal 175° vertical
Min. Illumination	0.6 lux / F2.8 (50 IRE, Gain 100%, 1/30 sec), 0 lux w/IR on
IR illuminators	IR LED, 10m x 10m area at 3m range (see Diagram A)

Camera Features

Day/Night	Yes, IR cut filter
Wide Dynamic Range	Digital WDR
White balance	Manual, AWB (2500K - 10000K)
Gain (AGC)	Auto
BLC	Yes
Privacy mask	Yes
Motion detection	Yes
Tamper protection	Yes

Video

Compression	H.264, MPEG4, MJPEG
Resolutions	1920x1920, 1536x1536, 1280x1280, 1056x1056, 768x768, 512x512, 384x384, 256x256, 192x192
Video streams	3 streams
Frame rate (max) ¹	15 fps @5MP 25 fps @1080p (MPEG4) 30 fps @1080p (H.264, MJPEG)
Dewarp	Local camera and software dewarping

Audio

Audio Compression	G.726, G711
Audio In/Out ²	Built in MIC, MIC In (plug-in power 3.3V, 200kΩ), Line OUT (1 Vrms)

Interface

Ethernet connectors	10 Base-T/100 Base-TX, RJ45 connector
Digital In/Out	1 in/1 out
SD card slot	MicroSD/SDHC/SDXC 64GB max

¹: Varies in accordance with the object, image quality, network environment and performance of the personal computer used.

²: The sound may not be clear depending on the conditions of the lines.

Network

Protocols	IPv4, IPv6, TCP/IP, HTTP, HTTPS, UPnP, RTSP/RTP/RTCP, IGMP, SMTP, FTP, DHCP, NTP, DNS, DDNS, PPPoE, CoS, QoS, SNMP, and 802.1X
ONVIF	Profile-S (test tool v14.12)
Maximum user access	10 clients
Security	Multi level ID/Password, IP address filtering, HTTPS, 802.1x port- based authentication
Basic Authorization	Yes (Windows standard)
Bandwidth control	QoS, CoS
Camera set-up program	Installation Wizard
Plug-In	Active X
Alarm recording	FTP, email, MicroSD card, HTTP

General

Dimensions	1.5 inch (H) x 6.3 inch (Diameter) (39mm x 160mm)
Weight	1.3 lbs (589g)
Power requirements	802.3af PoE, 802.3at PoE+, 12V DC ± 10 %
Power consumption	22W
Operation temperature	14°F to 122°F (-10°C to 50°C)
Operation humidity	~ 90%
Approvals	FCC/B (verification), IC(ICES-003), UL(60950), cUL
Warranty	2 years

System Requirements

Web browser support	Internet Explorer® Ver. 8.0 or later
Supported OS	Windows® XP, Vista® Business, Windows 7 professional

Accessories

Included	Quick start guide, CD-ROM, alignment sticker, screw and anchor kit, cable tie
----------	---

Diagram A



IK-WF51A

5MP Indoor Panoramic IP Dome

TOSHIBA
Leading Innovation >>>

Camera Modes

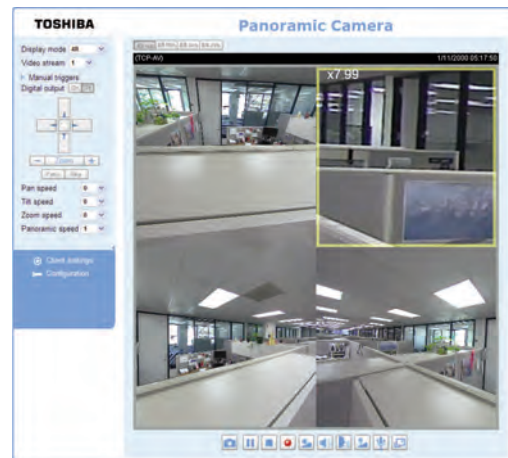
The IK-WF51A panoramic camera can display full surround video in multiple modes such as: original surround, full panoramic, 4 regions of interest, or combinations of original surrounds or panoramic plus regions of interest. With electronic PTZ controls, the panoramic camera can cover a large surveillance area with a single device.



Original surround



Four Regions of Interest
(no GUI)



Four Regions of Interest
(with GUI)



Panoramic
(no GUI)



Panoramic
(with GUI)

IK-WF51A




5MP Indoor Panoramic IP Dome



Included Accessories

- Quick start guide
- Screw and anchor kit
- CD-ROM
- Cable tie
- Alignment sticker

Optional Accessories

Accessory Type	Part Number	Description	Photo
Corner Mount	JK-CMA12	Corner mount adapter. Requires use with JK-PHO14 and JK-WM12	
Pendant Mount	JK-PHO14	Pendant mount adapter	
Pole Mount	JK-PMA12	Pole mount adapter. Requires use with JK-PHO14 and JK-WM12	
Pendant Head	JK-PMH12	Pendant head adapter. Requires use with JK-PHO14	
Pendant Pipe	JK-PMP12	Pendant pipe. Requires use with JK-PMH12	
Wall Mount	JK-WM12	Wall mount. Requires use with JK-PHO14	
Adapter Plate	JK-JBA3	Adapter plate for mounting to 4-11/16" junction box	