



PLGS-011

12" Open Fry Pan with Eclipse Non-Stick

- Induction Compatible
- Material: Stainless Steel 0.6mm, aluminum 3mm disc, glass lid, and ss handle.
- Highest quality stainless steel construction for durability and fast cleaning.
- Heavy gauge, handles and knobs are ergonomically designed for easy handling and stability.
- Strong reinforced riveted handles.
- ECLIPSE non-stick.
- Sandwiched bottoms with thick aluminum disc for even heat distribution.

UPC CODE Product: 00845965004690
Master Case: 10845965004697

Port of Loading Shenzhen

Case QTY 8

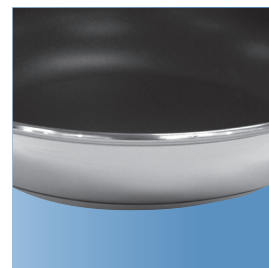
Cube (FT) 3.48

QTY/20 2280

QTY/40HQ 5440

CTN (LBS) 34.3

| Actual Product Inches | Color Box Inches | CTN Inches |
|-----------------------|----------------------|-----------------------|
| N/A | 18.75 x 2.75 x 12.63 | 25.75 x 19.25 x 12.13 |



Stainless Steel



ECLIPSE® Non-stick



Riveted Handles



Gas



Electric



Ceramic



Halogen



Dishwasher