

# SX-ND-4350WAN Wireless Access Point and Display Adapter



## Wireless Access Point and Interactive Display Adapter for Education

### Overview:

SX-ND-4350WAN is a robust and secure wireless access point designed for education. It also allows you to connect to an interactive display or projector wirelessly. The product connects to the network and the display in a presentation or classroom environment:

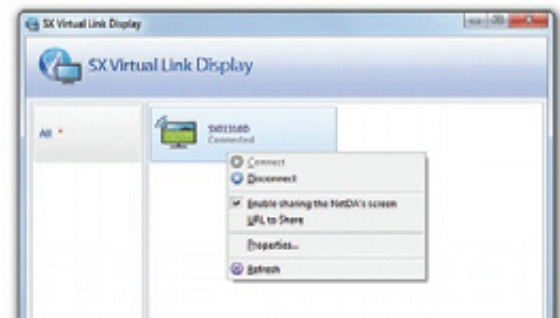
- 1 **Wireless LAN access point allowing up to 56 wireless clients to securely access the network.**
- 2 **Interactive image transmission.**
  - Projects screen of a Windows® tablet or notebook computer to an interactive board or short-focus projector over a wireless connection.
  - Wirelessly enable the touch operation of an interactive display.
  - Dual Band 802.11n

- 3 **Support for Full HD resolution**  
(1920 x 1080) permits the display of high picture quality.



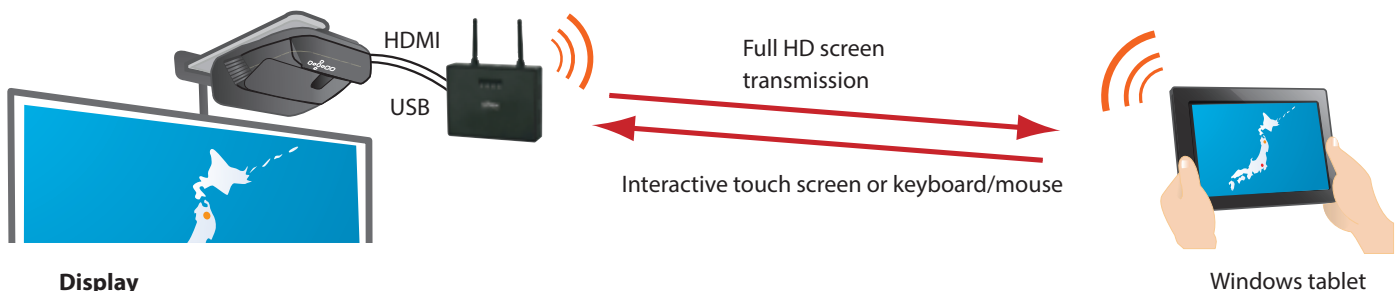
- 4 **"NetDA Manager", a simple and user-friendly utility**  
This software allows you to search for NetDA devices, connect and disconnect with monitors and touch input, and allows you to query the connection status.

- 5 **Screen Sharing to any Device**  
The software has a feature that allows you to easily share the screen being shown on the display to any device that has a web browser including tablet devices and smartphones.



### Main Features:

- 1 **Robust and Quality Wireless Operation**  
Real time immediate response to touch input and video.
- 2 **Bidirectional data transfer with various USB devices**  
Silex USB Virtual Link Technology™ enables various input devices such as touch panels or USB devices to be remotely controlled from across the network by the computer.



#### Display

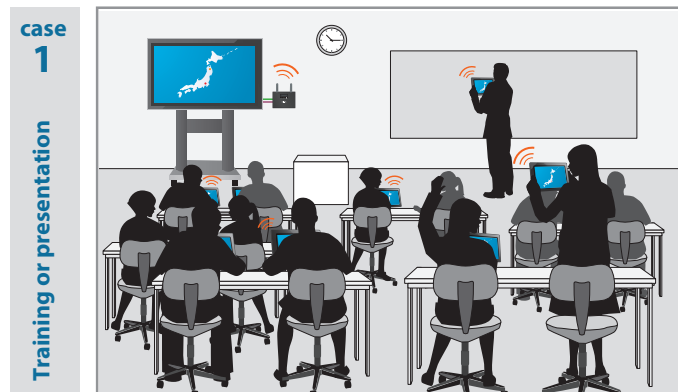
- Large screen TV
- Interactive Board
- Super short-throw projector



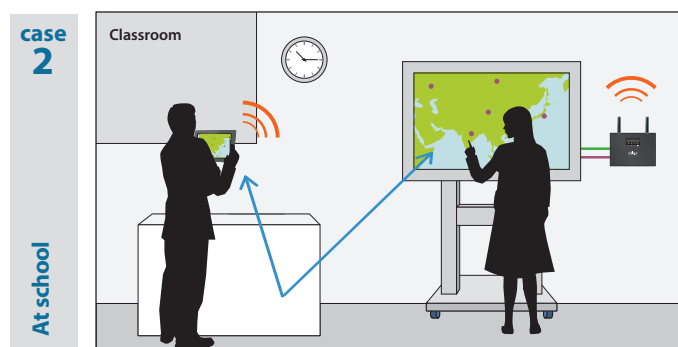
## SX-ND-4350WAN Wireless Access Point and Display Adapter

### Application Options:

### Technical Data:



A wireless connection instead of cables next to the teacher's podium allows the display to be moved around the room without restriction, making it easier to put away and to set it up.



Real time wireless interactive collaboration between teacher and student including touch screen and display.

— HDMI — USB

### Accessory options for the network display adapter

Mounting bracket



• VESA Compliant Mounting Bracket  
Part Number: 150-20122-100

OEM circuit boards for integration into a display and SDK solutions are also available. Please contact us for details.

Wired LAN	Product Name	SX-ND-4350WAN
	Interface	RJ-45 1 port (supported Auto MDI/MDI-X)
	Standard	Conforming to IEEE802.3 10BASE-T/100BASE-TX/1000BASE-T
	Security	MAC address filter
Wireless LAN	Interface	IEEE802.11a/b/g/n 2T×2R (theoretical value 300Mbps)
	Transmission Method	IEEE802.11a 5GHz (modulation method: OFDM) IEEE802.11b 2.4GHz (modulation method: DS-SS) IEEE802.11g 2.4GHz (modulation method: OFDM) IEEE802.11n (modulation method: OFDM) – MIMO (Multiple Input Multiple Output) – A-MPDU and A-MSDU of Aggregation function – HT20/HT40 mode (high-throughput mode)
	Radio Wave Output Setting	20 stages can be set at an interval of 5% from 5% to 100%
	Bandwidth Control	QoS
	Maximum Clients	56 wireless clients
	MultiSSID	2
	Security (authentication method)	Open, Shared, WPA-PSK, WPA2-PSK, WPA/WPA2-PSK (MIX) mode, 802.1x, WPA-Enterprise, WPA2-Enterprise, WPA/WPA2-Enterprise (MIX) mode
	Security (coding method)	AES, TKIP, AUTO, WEP (64/128bit)
	Security (others)	Stealth SSID, Privacy separator, MAC address filter
	Smart Wireless Setting	"Smart wireless setting" for client connection by push button, PIN cord, Supported external registrar
Image Transmission	Interface	HDMI x 1 port
	Display resolution	Maximum resolution: Full HD (1920 x 1080)
	Display function	Mirror mode (reproduction)
USB	Interface	USB2.0 x 2 Port
Other	Supported OS	Windows 7, Windows 8, Windows 8.1
	Supported utility	NetDA Manager 1.8.0 or later
	External dimension	120mm x 155mm x 32mm (excluding antenna)
	Accessories	Main body, AC adaptor, CD-ROM, Setup guide, Rubber feet (4), GPL notification sheet

silex technology is a registered trademark of silex technology, Inc. Other product or brand names may be registered trademarks or trademarks of their respective owners. Technical information and specifications are subject to change without notice. © silex technology, Inc. All rights reserved.

### silex global marketing & support locations



**USA**  
silex technology america, Inc.  
+1-801-747-0656  
www.silexamerica.com  
contact@silexamerica.com

**Japan**  
silex technology, Inc.  
+81-774-98-3782  
www.silex.jp  
support@silex.jp

**Europe**  
silex technology europe GmbH  
+49-2151-65009-10  
www.silexeurope.com  
contact@silexeurope.com



silex technology, Inc.  
Design & Manufacturing Center

silex technology, Inc.  
Design & Manufacturing Center

PN: 141-20132-100  
REV B 20150318