



Philips
LCD monitor with
SoftBlue Technology

E-line

24 (Viewable 23.6" / 59.9 cm)
Full HD (1920 x 1080)



247E6BDAD

Vivid colors, crisp details

in an elegant design

Designed for you: The elegant new Philips E-line monitor features new SoftBlue Technology to protect your eyes and deliver brilliant colorful images.

Superb Picture Quality

- SoftBlue technology protects eyes and maintains color
- LED technology for natural colors
- 16:9 Full HD display for crisp detailed images
- SmartImage Lite for easy optimized image settings
- SmartControl Lite: For quick and easy display tuning
- SmartContrast for deep black level details

Elegant Design

- Elegant, slim design complements your home decor
- Superb black cherry glossy finish
- Modern Touch controls complement the design

Experience immersive multimedia

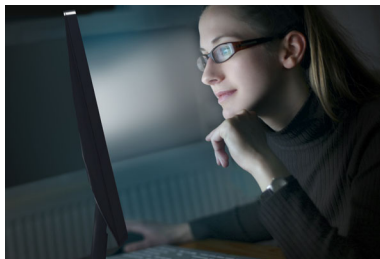
- MHL technology for enjoying mobile content on big screen
- Built-in stereo speakers for multimedia



PHILIPS

Highlights

SoftBlue Technology



Studies have shown that just as ultra-violet rays can cause eye damage, blue light rays from LED displays can cause eye damage and affect vision over time. SoftBlue LED technology uses a smart technology to reduce the harmful blue light waves without affecting the color or image of the display. SoftBlue LED technology is certified by international testing organizations SGS Labs and TUV Rheinland to reduce blue light and protect your eyes.

LED technology

White LED's are solid state devices which light up to full, consistent brightness faster saving startup time. LED's are free from mercury content which allows for eco-friendly recycling and disposal process. LED's allow for better dimming control of LCD backlight, resulting in super high contrast ratio. It also gives superior color reproduction thanks to consistent brightness across the screen.

16:9 Full HD display



The Full HD screen has the widescreen resolution of 1920 x 1080p. This is the highest

resolution of HD sources for the best possible picture quality. It is fully future proof as it supports 1080p signals from all sources, including the most recent like Blu-ray and advanced HD game consoles. The signal processing is extensively upgraded to support this much higher signal quality and resolution. It produces brilliant flicker-free progressive scan pictures with superb brightness and colors.

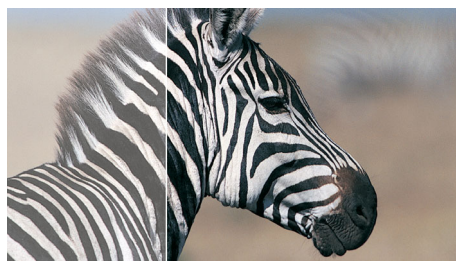
SmartImage Lite

SmartImage Lite is an exclusive, leading edge Philips technology that analyzes the content displayed on your screen. Based on a scenario you select, SmartImage Lite dynamically enhances the contrast, color saturation and sharpness of images and videos for ultimate display performance - all in real time with the press on a single button.

SmartControl Lite

SmartControl Lite is the next generation 3D icon based GUI monitor control software. This allows user to fine-tune most parameters of the monitor like Color, Brightness, screen calibration, Multi-media, ID management, etc with the mouse.

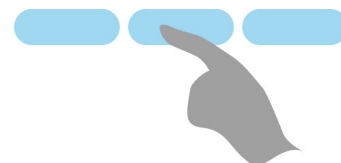
SmartContrast



SmartContrast is a Philips technology that analyzes the contents you are displaying, automatically adjusting colors and controlling backlight intensity to dynamically enhance contrast for the best digital images and videos or

when playing games where dark hues are displayed. When Economy mode is selected, contrast is adjusted and backlighting fine-tuned for just-right display of everyday office applications and lower power consumption.

Modern Touch controls



Touch control

Touch controls are intelligent, touch sensitive icons that replace protruding buttons that lets the user adjust the monitor to their requirement. Responding to your lightest touch, Touch control gives the monitor a modern feel.



TUV Certified Low Blue Light

Philips displays with SoftBlue LED technology are certified by TUV Rheinland Low Blue Light testing standard (2PF) to reduce harmful blue light.



Specifications

Picture/Display

- LCD panel type: TFT-LCD
- Backlight type: W-LED system
- Panel Size: 23.6" / 59.9 cm
- Effective viewing area: 521.28 (H) x 293.22 (V)
- Aspect ratio: 16:9
- Optimum resolution: 1920 x 1080 @ 60Hz
- Response time (typical): 5 (Grey to Grey) ms
- SmartResponse (typical): 2ms (Grey to Grey)
- Brightness: 250 cd/m²
- Contrast ratio (typical): 1000:1
- SmartContrast: 20,000,000:1
- Pixel pitch: 0.2715 x 0.2715 mm
- Viewing angle: 170° (H) / 160° (V), @ C/R > 10
- Picture enhancement: SmartImage Lite
- Display colors: 16.7 M
- Scanning Frequency: 30 -83 kHz (H) / 56 -75 Hz (V)
- sRGB
- MHL: 1080p@30Hz
- SoftBlue

Connectivity

- Signal Input: VGA (Analog), DVI-D (digital, HDCP), MHL-HDMI (digital, HDCP)
- Sync Input: Separate Sync, Sync on Green
- Audio (In/Out): PC audio-in, Headphone out

Convenience

- Built-in Speakers: 3 W x 2
- User convenience: Power On/Off, Menu, Input, SmartImage lite, Volume
- OSD Languages: Brazil Portuguese, Czech, Dutch, English, Finnish, French, German, Greek, Hungarian, Italian, Japanese, Korean, Polish, Portuguese, Russian, Simplified Chinese, Spanish, Swedish, Traditional Chinese, Turkish, Ukrainian
- Other convenience: Kensington lock
- Plug & Play Compatibility: DDC/CI, Mac OS X, sRGB, Windows 7, Windows 8

Stand

- Tilt: -5/20 degree

Power

- On mode: 17.44 W (typ.) (EnergyStar 6.0 test

method)

- Standby mode: 0.5 W (typ.)
- Off mode: 0.3 W (typ.)
- Power LED indicator: Operation - White, Standby mode- White (blinking)
- Power supply: External, 100-240VAC, 50-60Hz

Dimensions

- Product with stand (mm): 561 x 429 x 212 mm
- Product with stand in inch: 22.1 x 16.9 x 1.3 inch
- Product without stand (mm): 561 x 347 x 43 mm
- Product without stand in inch: 22.1 x 13.7 x 1.7 inch
- Packaging in mm (WxHxD): 598 x 490 x 100 mm
- Packaging in inch (WxHxD): 23.5 x 19.3 x 3.9 inch

Weight

- Product with stand (kg): 3.65 kg
- Product with stand (lb): 8.03 lb
- Product without stand (kg): 3.27 kg
- Product without stand (lb): 7.19 lb
- Product with packaging (kg): 4.90 kg
- Product with packaging (lb): 10.78 lb

Operating conditions

- Temperature range (operation): 0°C to 40°C °C
- Temperature range (storage): -20°C to 60°C °C
- Relative humidity: 20%-80 %
- Altitude: Operation: +12,000ft (3,658m), Non-operation: +40,000ft (12,192m)
- MTBF: 30,000 hour(s)

Sustainability

- Environmental and energy: EnergyStar 6.0, EPEAT Silver, RoHS, Lead-free, Mercury Free
- Recyclable packaging material: 100 %

Compliance and standards

- Regulatory Approvals: BSMI, CE Mark, cETLus, FCC Class B, GOST, PSB, SASO, SEMKO, TCO 6.0, TUV/ISO9241-307, WEEE, SGS Cert. - blue light cut-off

Cabinet

- Color: Black Cherry
- Finish: Glossy



Issue date 2015-03-22

Version: 4.0.1

12 NC: 8670 001 23416
UPC: 6 09585 24473 3

© 2015 Koninklijke Philips N.V.
All Rights reserved.

Specifications are subject to change without notice.
Trademarks are the property of Koninklijke Philips N.V.
or their respective owners.

www.philips.com

* This Philips display is MHL certified. However, in case your MHL device does not connect or work correctly, check with your MHL device FAQ or vendor directly for direction. The policy of your device manufacturer may require you to purchase their brand specific MHL cable or adapter in order to work

* Requires optional MHL certified mobile device and MHL cable. (not included) Please check with your MHL device vendor for compatibility.

* Standby/Off energy saving of ErP is not applicable for the MHL charging functionality

* For complete list of MHL-enabled products refer to www.mhlconsortium.org

* Smart response time is the optimum value from either GtG or GtG (BW) tests.