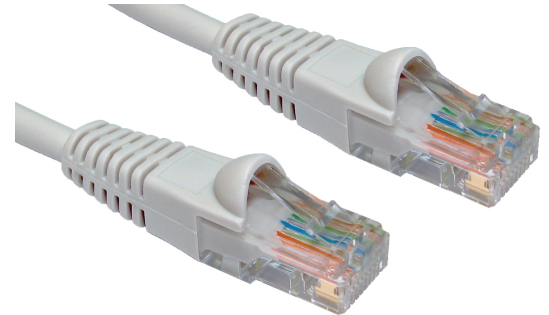


## CAT5E PATCH CABLE

NETWORKING CABLE  
COMMERCIAL AND RESIDENTIAL



Quality network cable used for hubs, switches, routers, DSL/ cable modems, patch panels and other high performance networking applications. The molded, snagless boot prevents unwanted cable snags during installation with extra strain-relief.

- MOLDED, SNAGLESS BOOTS
- 100% COPPER
- 24AWG
- 8P/8C 50 MICRON GOLD PLATED CONNECTORS
- PVC CABLE JACKET
- 568B WIRING COLOR CODE
- 350 MHz
- Warranty: Limited Lifetime

PART #: 0E-C5EGY16  
0E-C5EGY36  
0E-C5EGY56  
0E-C5EGY76

LENGTH: 1',3',5',7'

COLOR: GREY

PACKAGE QTY: 6 CABLES

Product Certification:



FOR MORE INFORMATION,  
CONTACT YOUR ADI SALES PERSON.

[wboxtech.com](http://wboxtech.com)