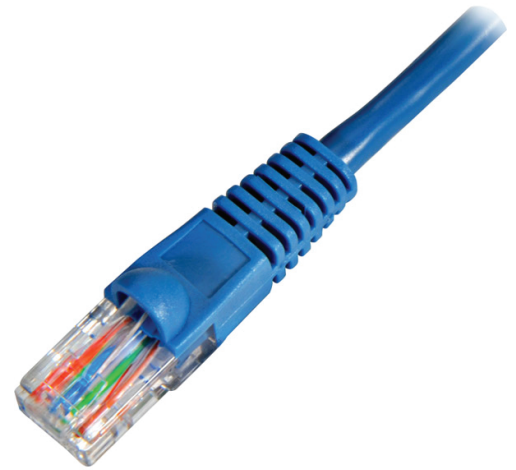


CAT5E PATCH CABLE

NETWORKING CABLE
COMMERCIAL AND RESIDENTIAL



Quality network cable used for hubs, switches, routers, DSL/ cable modems, patch panels and other high performance networking applications. The molded, snagless boot prevents unwanted cable snags during installation with extra strain-relief.

- MOLDED, SNAGLESS BOOTS
- 100% COPPER
- 24AWG
- 8P/8C 50 MICRON GOLD PLATED CONNECTORS
- PVC CABLE JACKET
- 568B WIRING COLOR CODE
- 350 MHz
- Warranty: Limited Lifetime

PART #: 0E-C5EBL16
0E-C5EBL36
0E-C5EBL56
0E-C5EBL76

LENGTH: 1',3',5',7'

COLOR: BLUE

PACKAGE QTY: 6 CABLES

Product Certification:

