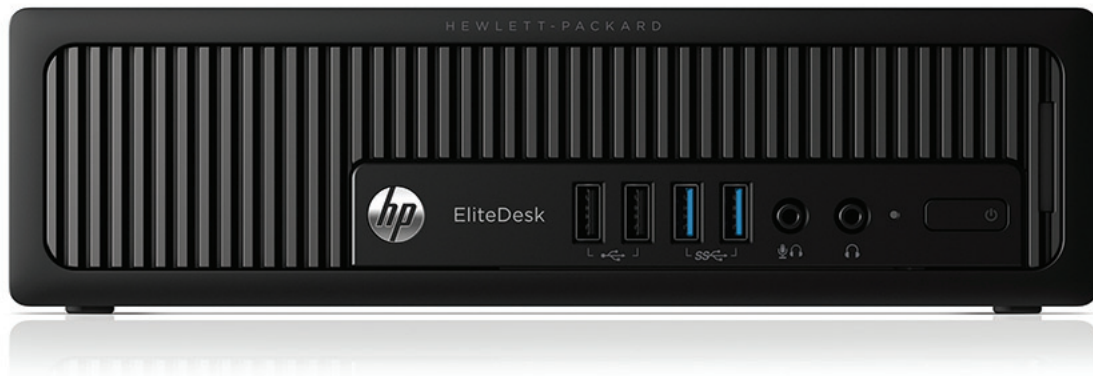


HP EliteDesk 800 G1 Ultra-slim PC



Business demands confidence. Here's yours.

Designed to perform, impress, and protect—the sleek HP EliteDesk 800 G1 helps you power through to business success while allowing customized deployment.



HP recommends Windows.

The solution for diverse business demands

The new way to do business. Impress and perform like never before—and meet a variety of business demands—with highly customizable tools, new features and a stylish new design.

Easily share your internet connection with your devices and help colleagues get online fast with HP Wireless Hotspot.¹

Share presentations, videos, and other content—no cables needed. WiDi Intel® Wireless Display lets you connect your EliteDesk to your projectors and displays wirelessly.²

The new, slim removable hard drive lets you secure your most important data when you're away from the office.³ The optional PCI port helps ensure broad compatibility with existing technology investments.⁴

Fast-track your performance

Multitask and move your business forward with the latest Intel processors. Quickly open new files, switch applications, and enjoy less wait time with solid-state drives and solid-state hybrid drive options.⁵

Power through your day with speed and performance. Get the latest in processing technology with your choice of 4th generation Intel® Core™ processors⁶ with vPro⁷ support. Watch your inbox while working on other tasks. There's plenty of screen room for all of your work with support for multiple displays.⁸

Intel® Smart Response Technology (SRT),⁹ a disk cache solution, delivers similar performance associated with Solid State Drives while retaining the data storage capacity of today's large Hard Disk Drives.

Make the most of virtual conferencing. Bring work to life through immersive surround sound with deep, rich bass and crystal clear dialog using DTS Studio Sound software.^{10 11}

Heavy security, exceptionally managed

Keep it secure, keep it simple. IT efficiency reigns supreme when it's backed by a full portfolio of HP Client Security¹² and Intel vPro⁷ management features.

No more remembering passwords. HP Password Manager¹³ lets you quickly log in to various online accounts. Now your passwords can be longer and more secure.

Save your data. RAID configurations utilize dual storage drives to automatically back up and help protect your sensitive data.^{14 15}

Stay up and running. HP BIOS Protection¹⁶ offers enhanced protection against virus attacks and other security threats, and is designed to help prevent data loss and reduce downtime.

Reliability for the long haul

Count on the support you need to get long-term value out of your investment. This work-ready PC is designed for a long lifecycle, with platform stability up to 30 months.

Rest assured. Talk to an agent any time and get priority service at any HP repair center with HP Elite Premium Support¹⁷, at no additional charge.

HP EliteDesk PCs are rigorously tested to help ensure reliability. During the HP Total Test Process, our PCs experience 115,000 hours of performance trials to help get you through your business day.

HP EliteDesk 800 G1 Ultra-slim PC

HP recommends Windows.



Form Factor	Ultra-slim desktop
Operating System	Windows 8 Pro 64 Windows 8 64 Windows 7 Ultimate 32 Windows 7 Ultimate 64 Windows 7 Professional 32 Windows 7 Professional 64 Windows 7 Professional 32 (available through downgrade rights from Windows 8 Pro 64) Windows 7 Professional 64 (available through downgrade rights from Windows 8 Pro 64) Windows 7 Home Premium 32 Windows 7 Home Premium 64 SUSE Linux Enterprise Desktop 11 FreeDOS
Processor Family	Intel® Core™ i7 processor; Intel® Core™ i5 processor
Processor	Intel® Core™ i7-4770S with Intel HD Graphics 4600 (3.1 GHz, 8 MB cache, 4 cores); Intel® Core™ i5-4670S with Intel HD Graphics 4600 (3.1 GHz, 6 MB cache, 4 cores); Intel® Core™ i5-4570S with Intel HD Graphics 4600 (2.9 GHz, 6 MB cache, 4 cores)
Chipset	Intel® Q87 Express
Memory	Up to 16 GB 1600 MHz DDR3 SDRAM Memory slots: 2 SODIMM
Storage	Internal drive bays External drive bays One 6,35 cm (2.5") 320 GB, up to 500 GB, SATA (7200 rpm) 500 GB, up to 1 TB, SATA SSHD 120 GB, up to 160 GB, SATA SSD up to 256 GB, SATA SED
Removable Media	Slim SATA Blu-ray writer; Slim SATA SuperMulti DVD writer; Slim SATA DVD-ROM
Graphics	Integrated: Intel HD Graphics 2500 and 4600; Discrete: AMD Radeon HD 7650A; AMD Radeon HD 8350; AMD Radeon HD 8490 (1GB); NVIDIA NVS 310 (512 MB); NVIDIA NVS 315 (1GB)
Audio	HD audio with Realtek ALC221 codec; DTS Studio Sound audio management technology; Microphone and headphone front ports (3.5mm); Line-out and Line-In rear Ports (3.5mm); Multi-streaming capable; Internal speaker (standard)
Communications	Standard: Intel I217LM Gigabit Network Connection; Optional: Intel Centrino Advanced-N 6205 802.11a/b/g/n PCI Express Mini Card Wireless Network Connection
Expansion Slots	1 mini PCIe; 1 MXM; 1 mSATA
Ports and Connectors	2 USB 3.0; 6 USB 2.0; 2 PS/2; 1 VGA; 2 DisplayPort; 1 audio in; 1 audio out; 1 RJ-45; 1 headphone; 1 microphone
Security	Trusted Platform Module (TPM) 1.2; SATA port disablement (via BIOS); Drive lock; Intel® Identify Protection Technology (IPT); Serial, parallel, USB enable/disable (via BIOS); Optional USB Port Disable at factory (user configurable via BIOS); Removable media write/boot control; Power-On password (via BIOS); Setup password (via BIOS); Solenoid Hood Lock / Sensor; Support for chassis padlocks and cable lock devices
Software	Computrace (status tracing); Device Access Manager; Drive Encryption (planned to be available in August 2013); File Sanitizer (Activated via Wizard); Disk Sanitizer (external version); Microsoft Security Essentials (Windows 7); Microsoft Defender (Windows 8); Security Manager; Secure Erase (Windows 8); Cyberlink Media Suite; Cyberlink PhotoDirector; Cyberlink Power Director; Cyberlink Power DVD, BD; Cyberlink Power2Go (Secure Burn); HP ePrint Driver; HP PageLift; HP Support Assistant; HP Recovery Disk Creator (Windows 8); HP Recovery Manager (Windows 8); Adobe Flash Player (Windows 7); Bing Search for Internet Explorer 10 (Windows 7); Evernote; PDF Complete (Windows 7); PDF Complete, Corporate Edition (Windows 8); Skype; Buy Office
Dimensions	25.1 x 25.4 x 6.6 cm
Weight	Starting at 3.1 kg Exact weight depends on configuration
Energy Efficiency Compliance	ENERGY STAR® qualified configurations available
Power	135W (integrated) standard efficiency, 89% efficient, active PFC; 180W (discrete) standard efficiency; 89% efficient, active PC
Expansion Solutions	1 mini PCIe; 1 MXM; 1 mSATA One 6,35 cm (2.5")
Warranty	3-year limited warranty including 3 years of parts, labour, and next-business-day onsite service. Terms and conditions vary by country. Certain restrictions and exclusions apply.

¹ The wireless hotspot application requires an active internet connection, a separately purchased data plan and separately purchased wireless NIC card. While HP wireless hotspot is active, on-device applications will continue to work and will use the same data plan as the wireless hotspot. Wireless hotspot data usage may incur additional charges. Check with your internet service provider for plan details. Requires Windows.; ² Integrated Intel Wi-Di feature is available on select configurations only and requires a separately purchased wireless NIC card, and a separately purchased projector, tv or computer monitor with an integrated or external Wi-Di receiver. External Wi-Di receivers connect to the projector, tv or computer monitor via a standard HDMI cable, also sold separately.; ³ Removable hard drive planned to be available August 2013.; ⁴ Optional PCI slot not available on HP EliteDesk SFF or USDT.; ⁵ Solid State Hybrid Drives planned to be available October 2013.; ⁶ Multi-Core is designed to improve performance of certain software products. Not all customers or software applications will necessarily benefit from use of this technology. 64-bit computing on Intel® architecture requires a computer system with a processor, chipset, BIOS, operating system, device drivers, and applications enabled for Intel® 64 architecture. Processors will not operate (including 32-bit operation) without an Intel® 64 architecture-enabled BIOS. Performance will vary depending on your hardware and software configurations. Intel's numbering is not a measurement of higher performance.; ⁷ Some functionality of this technology, such as Intel® Active management technology and Intel Virtualization technology, requires additional 3rd party software in order to run. Availability of future "virtual appliances" applications for Intel vPro technology is dependent on 3rd party software providers. Microsoft Windows required.; ⁸ Support for external displays as a standard feature through integrated processor-based graphics is dependent upon the particular PC platform/form factor; the actual number of displays supported will vary. An optional discrete graphics solution will be required for the support of additional displays. Additional cables required. DisplayPort with multi-stream through integrated graphics is planned to be available in fall 2013 as an integrated feature and as a web update in late summer 2013.; ⁹ Requires a compatible Intel® Core processor, enabled chipset, Intel® Rapid Storage technology software and non-SED HDD + optional mSATA SSD flash cache module. Intel® Smart Response Technology is only available on select 2013 HP systems. Depending on system configuration, results may vary. mSATA SSD is planned to be available in August 2013.; ¹⁰ Internet access required.; ¹¹ Webcam required for video conferencing.; ¹² Requires Windows.; ¹³ Requires Internet Explorer (IE8 or IE9). Not all websites and applications may be supported.; ¹⁴ RAID configuration is optional and does require a second hard drive.; ¹⁵ Sold separately or as an optional feature.; ¹⁶ HP Tools partition with an HP BIOS required for automatic recovery. Business Desktops do not support this HP BIOS Protection auto-recovery feature.; ¹⁷ Elite Support varies by region.

Get engaged with HP Financial Services

Get engaged with HP Financial Services to implement innovative technologies essential for driving business value and competitive differentiation. More information on www.hp.com/go/hpfs.

The product could differ from the images shown. © 2013 Hewlett-Packard Development Company, L.P. The information contained herein is subject to change without notice. The only warranties for HP products and services are set forth in the express warranty statements accompanying such products and services. Nothing herein should be construed as constituting an additional warranty. HP shall not be liable for technical or editorial errors or omissions contained herein.

Not all features are available in all editions of Windows 8. Systems may require upgraded and/or separately purchased hardware to take full advantage of Windows 8 functionality. See <http://www.microsoft.com/windows> for details. Bluetooth is a trademark of its proprietor and used by Hewlett-Packard Company under license. Intel and Core are trademarks or registered trademarks of Intel Corporation or its subsidiaries in the U.S. and other countries. All other trademarks are the property of their respective owners. **Learn more at www.hp.eu/desktops**

4AA4-7148EEE, July 2013



Accessories and services (not included)

HP 8-GB PC3-12800 (DDR3-1600 MHz)
SODIMM Memory



Maximize your business PC performance with HP Memory. Upgrading your memory is a cost-effective way to boost your system performance without having to upgrade your processor.

Product number: B4U40AA

HP USB Graphics Adapter



HP offers a variety of optional products (each sold separately) designed to complement our monitors and enhance the overall computing experience. The super-compact HP USB Graphics Adapter enables connection of up to six simultaneous displays to help you boost productivity and multi-task across several open applications. Use one Adapter to bridge between a notebook or desktop PC and second monitor or use multiple Adapters to connect several displays to each other. Supports resolutions up to 1920 x 1080 (widescreen) or 1600 x 1200 (traditional).

Product number: NL571AA

HP 128 GB SATA 6 Solid State Drive



Boost the performance and robustness of your HP Business Desktop PC with an HP Solid State Drive. The HP Solid State Drives are a drop-in replacement for the 2.5-inch or 3.5-inch (with bracket) hard disk drive of some HP Compaq Business Desktop PCs providing many performance and durability improvements over traditional Hard Disk Drive (HDD) technology.

Product number: QV063AA

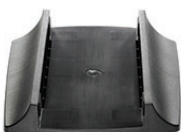
HP Wireless Keyboard and Mouse



The HP Wireless Keyboard and Mouse places advanced functionality and ease of operation at your fingertips. Stop hiding wires and regain a clutter-free work space with a cordless keyboard, cordless laser mouse and USB wireless receiver in a single package – built with the environment in mind.

Product number: QY449AA

HP 2009 (Black) USDT Tower Stand



Free up your valuable desk space with HP Tower Stands.

Product number: VN568AA

4-year Next Business Day Onsite



Receive 4 years of next business day onsite repair from an HP-qualified technician for your computing device, if the issue cannot be solved remotely

Product number: U7897E

The product could differ from the images shown. © 2013 Hewlett-Packard Development Company, L.P. The information contained herein is subject to change without notice. The only warranties for HP products and services are set forth in the express warranty statements accompanying such products and services. Nothing herein should be construed as constituting an additional warranty. HP shall not be liable for technical or editorial errors or omissions contained herein.

Not all features are available in all editions of Windows 8. Systems may require upgraded and/or separately purchased hardware to take full advantage of Windows 8 functionality. See <http://www.microsoft.com/windows> for details. Bluetooth is a trademark of its proprietor and used by Hewlett-Packard Company under license. Intel and Core are trademarks or registered trademarks of Intel Corporation or its subsidiaries in the U.S. and other countries. All other trademarks are the property of their respective owners. **Learn more at www.hp.eu/hpoptions**

4AA4-7148EEE, July 2013

