

Digi TransPort® WR21

Compact Enterprise Class Cellular Router

Compact, flexible, low-cost enterprise 2.5G/3G/4G cellular router for remote and mobile networking applications.



Overview

Digi TransPort WR21 is a full-featured cellular router offering the flexibility to scale from basic connectivity applications to enterprise class routing and security solutions. With its high-performance architecture, Digi TransPort WR21 provides primary and backup connectivity and is designed for Wide Area Network connectivity including 2.5G/3G/4G networks and beyond. Optional Gobi™ module provides true HSPA+/EV-DO carrier diversity in a single solution.

Flexible power and connectivity options, along with extended temperature ranges make Digi TransPort WR21 a versatile product for both commercial and industrial environments.

Digi TransPort WR21 is available in both standard routing and enterprise configurations. The standard version offers basic routing, NAT and security, while the enterprise version adds advanced routing, security/VPN and stateful firewall. Advanced features allow the Digi TransPort WR21 to be used as a component of a PCI compliant network.

Digi management solutions provide easy setup, configuration and maintenance of large installations of remote Digi TransPort devices. Device Cloud by Etherios™ offers web-based device management for remote Digi cellular routers and gateways. Also available is the windows based Digi Remote Manager™ for customer installed device management and reporting.

Related Products



VPN Concentrators

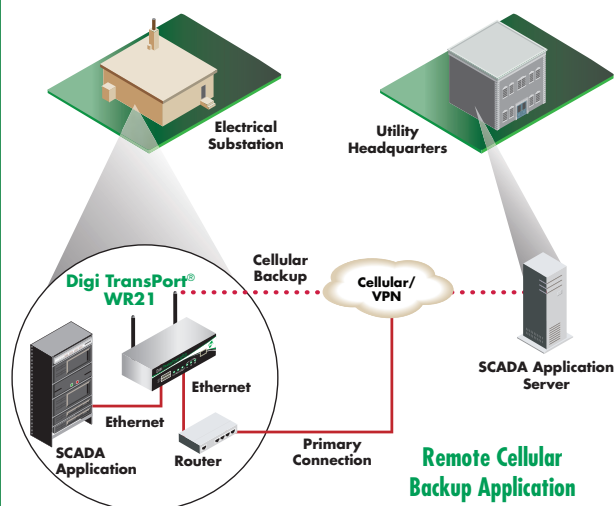


Digi Remote Management



Accessories

Application Highlight



Features/Benefits

- Compact, low-cost, flexible cellular routing platform with standard and enterprise feature sets
- Standard option includes basic routing and IP filtering; Enterprise option includes advanced routing protocols, VPN and stateful firewall
- High-performance architecture, flexible power and extended operating temperature
- 2.5G/3G/4G cellular interface including: including LTE, GSM:EDGE, HSPA, HSPA+ and CDMA: 1xRTT, EV-DO
- RS-232 serial and 10/100 Ethernet or RS-232/422/485 serial and 2-port Ethernet switch
- Digi remote management software solutions, including the Device Cloud by Etherios, provide easy setup, configuration and maintenance of large installations



Specifications

Digi TransPort® WR21

Wireless Interfaces

WWAN**

LTE - EMEA (L1)	800/850/900/1800/1900/2100/2600MHz; 3G fall back to 850/900/1900/2100MHz and 2G fall back to 850/900/1800/1900MHz; Transfer Rate (max): 50 Mbps Up, 100 Mbps Down
LTE - North America (L5)	Multi-Carrier (Verizon, AT&T, and Sprint) 700/850/1700(AWS)/1900 MHz; 2G/3G GSM fall back to 850/900/1700AWS/1800/1900/2100MHz; 2G/3G CDMA fall back to 800/1900MHz; Transfer Rate (max): 50 Mbps Up, 100 Mbps Down
LTE - North America (L6)	700/850/1700(AWS)/1900MHz; 2G/3G fall back to 850/1900MHz; Transfer Rate (max): 50 Mbps Up, 100 Mbps Down (Coming Summer 2014)
LTE - Verizon (L8)	700/1700(AWS)MHz; No 2G/3G fall back; Transfer Rate (max): 50 Mbps Up, 100 Mbps Down (Coming Summer 2014)
LTE - Verizon (L9)	700/1700(AWS)MHz; 3G fall back to 850/1900MHz; Transfer Rate (max): 50 Mbps Up, 100 Mbps Down (Coming Summer 2014)
HSPA+ (U9)	850/900/1700 (AWS)/1900/2100MHz; Transfer Rate (max): 5.76 Mbps Up, 21 Mbps Down
Edge (E1)	GPRS/EDGE Class 10; 850/900/1800/1900 MHz; Transfer rate (max): 236 Kbps up/down
CDMA EV-DO (Dx)	450 MHz; EV-DO Rev B; R-UIM support; Transfer rate (max): 14.7 Mbps Up; 5.4 Mbps Down
CDMA 1xRTT (Bx)	800/1900 MHz; Transfer rate (max): 153Kbps up/down
GSM-R (R5)	900/1800/1900MHz (TRM-5); GPRS Class 10; Transfer rate (max): 42.8 Kbps Up, 85.6 Kbps Down42.8 Kbps Up, 85.6 Kbps Down
Connectors	Ux, Lx variants: 2 x 50 Ω SMA (Center pin: female); E1, Dx, Bx variants: 1 x 50 Ω SMA (Center pin: female)
SIM Slots	2
SIM Security	Optional SIM slot cover plate

Other

Additional Features	Send GPS via UDP/IP, TCP/IP (up to two destinations) or serial; Customize and/or send data using Python; GPS status query; Time source capable
---------------------	--

Wired Interfaces

Serial

Ports	1
Standard	Option of RS-232 or RS-232/422/485
Async/Sync	Async
DTE/DCE	DCE
Signal Support	TXD, RXD, RTS, CTS, DTR, DCD, DSR, RI
Flow Control	Software (XON/XOFF), Hardware supported
COM Port Redirector	RealPort®
Connector	DB-9

Ethernet

Ports	Option of 1 or 2
Standard	IEEE 802.3
Physical Layer	10/100 Base-T
Data Rate	10/100 Mbit/s
Mode	Full or Half duplex
Interface	Auto MDI/MDIX
Connector	RJ-45

USB

Ports	1
Standard	USB 2.0
Signaling	High-speed
Connector	Type A

Other

I/O and DSL	N/A
-------------	-----

Software/Management

Remote Management	Device Cloud by Etherios (cloud based); Digi Remote Manager (user installed/managed); SNMP v1/v2c/v3 (user installed/managed)
Local Management	Web interface (HTTP/HTTPS); CLI (Telnet, SSH, SMS, Serial Port)
Management/ Troubleshooting Tools	FTP, SFTP, SCP; Protocol analyzer with PCAP for Wireshark; Event logging with Syslog and SMTP; NTP/SNTP
Software Packages	Option of Standard or Enterprise. See next page for details.
Memory	128 MB NAND Flash/128 MB DDR2 SDRAM

** Transfer rates are theoretical and network operator dependent

Specifications		Digi TransPort® WR21	
Power			
Input	9-30 VDC		
Consumption	6W max, 4W typical		
Connector	Depending on model: Locking barrel or screw-down removeable terminal block		
DC Power Cord*	Locking barrel to bare wire		
DC Power Supply*	100-240 VAC 50/60 Hz; Option of standard temperature or extended temperature		
Battery Backup	None		
Physical			
Dimensions (L x W x H)	3.9 in x 5.2 in x 1.3 in (100 mm x 131 mm x 32 mm)		
Weight	1.08 lb (0.49 kg)		
Status LEDs	Power, Service, WWAN, 3x Signal strength		
Enclosure Material/Rating	Industrial (Metal)/ IP50		
Mounting	Brackets for wall mount & DIN rail sold separately		
Environmental			
Operating Temperature ***	-35° C to +75° C		
Storage Temperature	-40° C to +85° C		
Relative Humidity	0% to 95% (non-condensing) @ 25° C		
Ethernet Isolation	1.5 kV RMS		
Serial Port Protection (ESD)	15 kV		
Hazardous (Class 1 Div 2)	Optional		
Conformal Coating	N/A		
Approvals			
GSM/UMTS	PTCRB, NAPRD.03, GCF-CC, R&TTE, EN 301 511		
CDMA/EV-DO	CDG TIA/EIA-690, CDG TIA/EIA-98-E		
Cellular Carriers	Certified by most major carriers. See www.digi.com for a full list.		
Safety	UL 60950, CSA 22.2 No. 60950, EN60950		
Emissions/Immunity	CE, FCC Part 15 Class B, AS/NZS CISPR 22, EN55024, EN55022 Class B		
Warranty			
Product Warranty	5 years		

Software Packages		Enterprise	Standard
Protocols	Same as Standard plus Device Cloud; Dynamic DNS client compatible with BIND9/No-IP/DynDNS	HTTP, HTTPS, FTP, SFTP, SSL, SMTP, SNMP (v1/v2c/v3), SSH, Telnet and CLI for web management; remote management via software tool (option); SMS management, protocol analyzer, ability to capture PCAP for use with Wireshark; DynDNS	
Security/VPN	Stateful inspection firewall with scripting, address and port translation; VPN: IPSec with IKEv1, IKEv2, NAT Traversal; SSL, SSLv2, SSLv3, FIPS 197, Open VPN client and server; PPTP, L2TP; VPN Tunnels included: WR11/WR21/WR41/WR44/WR44 R/WR44 RR: 5, WR44-DSL: 20; Maximum VPN Tunnels available: WR11/WR21: 5, WR41: 50, WR44/WR44 R/WR44 RR: 200; Cryptology: SHA-1, MD5, RSA; Encryption: DES, 3DES and AES up to 256-bit (CBC mode for IPsec); Authentication: RADIUS, TACACS+, SCEP for X.509 certificates; Content Filtering (via 3rd party); MAC Address Filtering; VLAN support; Ethernet Port Isolation	IP filtering	
Routing/Failover	IP pass-through; NAT, NATPT with IP Port Forwarding; Ethernet Bridging; GRE; Multicast Routing; Routing Protocols: PPP, PPPoE, RIP (v1, v2) OSPF, SRI, BGP, iGMP routing (multicast); IPv6 (firmware upgradable); RSTP (Rapid Spanning Tree Protocol); IP Failover: VRRP, VRRP+TM; Automatic failover/failback to second GSM network/Standby APN; Verizon NEMO/DMNR for Primary Wireless Access	IP pass-through NAT, NATPT with IP Port Forwarding	
Other Protocols	DHCP; Dynamic DNS client compatible with BIND9/No-IP/DynDNS; QoS via TOS/DSCP/WRED	DHCP; Dynamic DNS client compatible with BIND9/No-IP/DynDNS	
Specialty/Legacy Protocols	RealPort®; Modbus UDP/TCP to serial; X.25 including XOT, SNA/IP, TPAD and PAD; Protocol switch*	RealPort®	

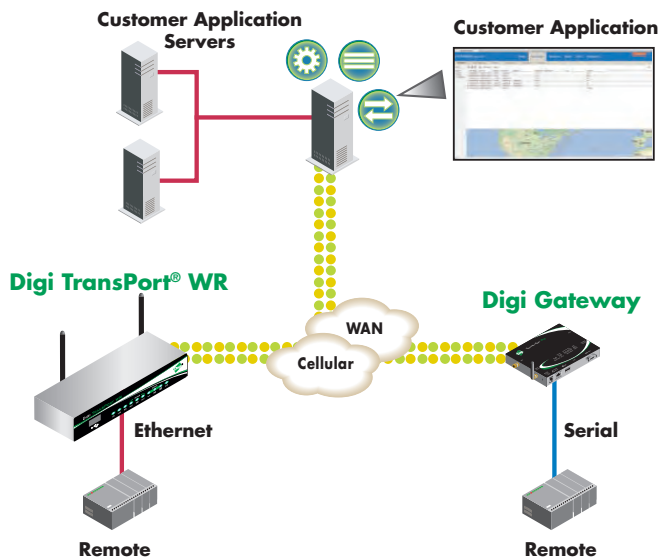
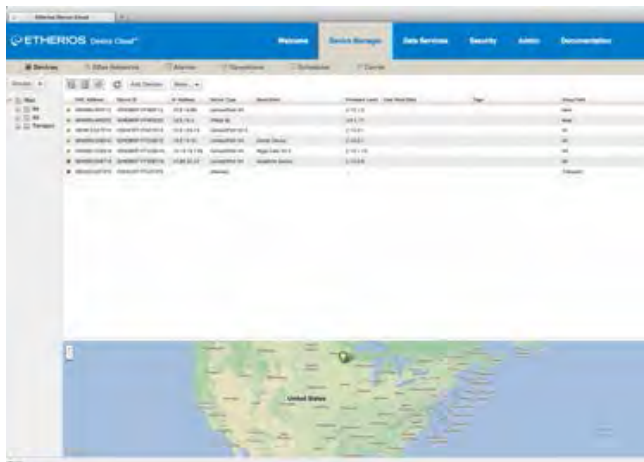
* Optional hardware

*** Reduced cellular performance may occur above +60° C. Standard temperature power supplies may reduce temperature range.

Device Management Features

- View of all remote devices and their connection status
- Automatic registration of newly connected devices
- Remote device configuration
- Actions include device grouping and scheduling of operations
- Monitoring of user specified events
- Device statistic and report generation
- Alarm generation and alerting
- Secure access to all devices from web browser, anywhere
- Remote reboot of device and default reset
- Remote device management with Device Cloud

Easy Remote Configuration and Management



Product Images

Digi TransPort WR21



Visit www.digi.com for part numbers.

DIGI SERVICE AND SUPPORT - You can purchase with confidence knowing that Digi is here to support you with expert technical support and a strong five-year warranty. www.digi.com/support

**Digi International
Worldwide HQ**

877-912-3444
952-912-3444

**Digi International
France**

+33-1-55-61-98-98
www.digi.fr

**Digi International
Japan**

+81-3-5428-0261
www.digi-intl.co.jp

**Digi International
India**

+91-80-4287-9887

**Digi International
Singapore**

+65-6213-5380

**Digi International
China**

+86-21-5150-6898
www.digi.cn

BUY ONLINE • www.digi.com

91001738
B8/814

© 2011-2014 Digi International Inc.

All rights reserved. Digi, Digi International, Etherios, the Digi logo, Digi TransPort, RealPort, Digi Remote Manager and Device Cloud by Etherios, are trademarks or registered trademarks of Digi International Inc. in the United States and other countries worldwide. All other trademarks are the property of their respective owners. All information provided is subject to change without notice.

