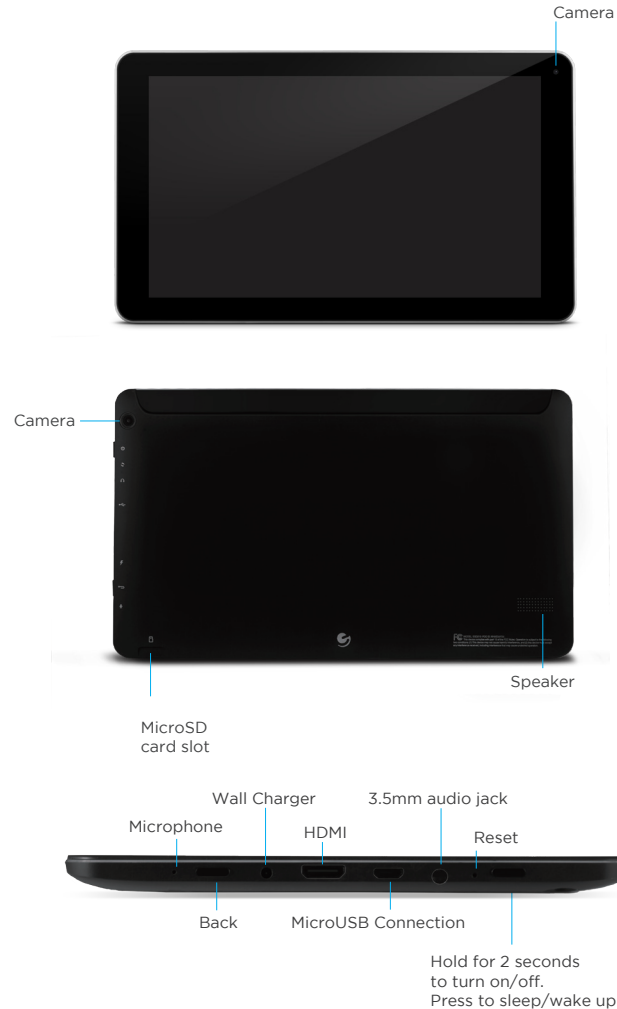




Quick Start Guide

Ematic 10" HD Quad-Core Tablet with Android™ 4.4, KitKat®
EGD213



Charging

Full charge your tablet for 6 hours before the first use.



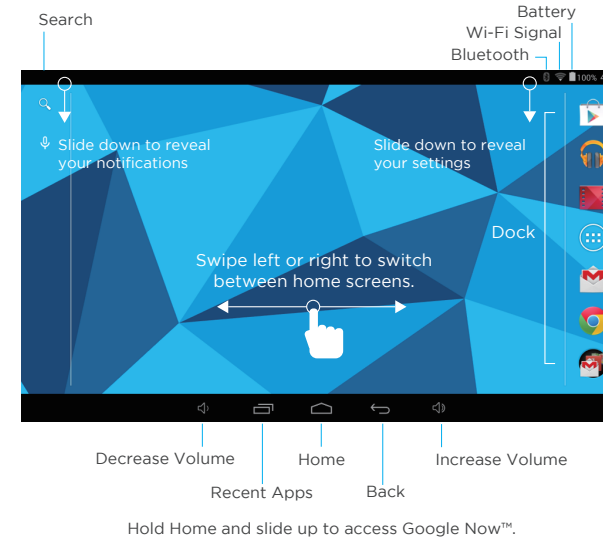
Use the included 5V wall charger.



The battery indicator will show that your device is charging.



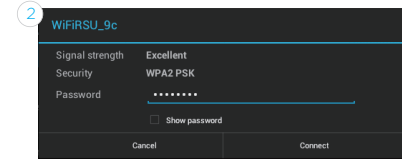
Screen Basics



Connecting to Wi-Fi®



Enter the settings app located in the apps menu. Tap the switch for Wi-Fi.



Choose your network and enter your password using the on-screen keyboard.

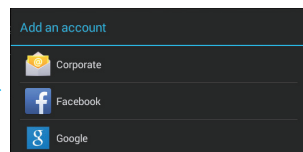
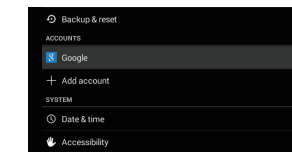
Google™ Account

The first time you use the Google Play™ Store app you will be prompted to create a Google account. If you already have a Gmail™ account, you have the option to use your Gmail address and password to sign in. If you do not have a Gmail account, follow the prompts to create an account.

At the end of the setup you will be asked to setup a credit card with Google Wallet™. You can skip this step and enter your information when you want to make a purchase.

Adding Other Accounts

If your primary email account is not gmail you can add your email account to receive. You can also add accounts from other social networking and messaging apps you have installed. Go to Settings and tap the + under Accounts.



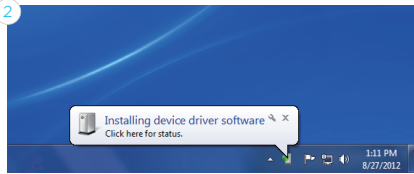
Connecting to a Computer



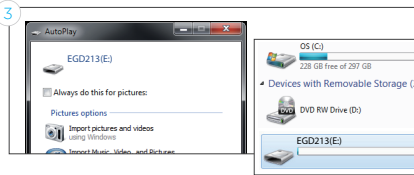
Connect to your computer by USB.



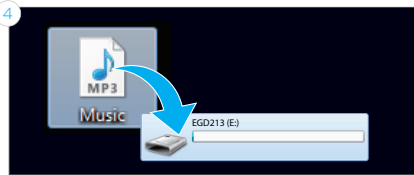
Windows™



The device driver will install.

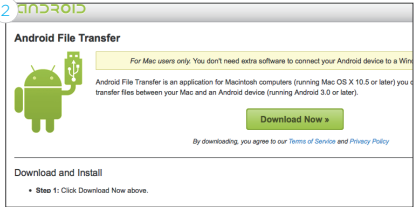


Choose open folder to view files or select the removable disk.



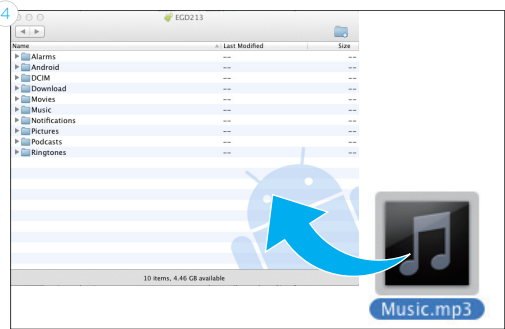
You will now be able to drag and drop files from your computer onto your tablet just as you would with a USB flash drive.

Mac®



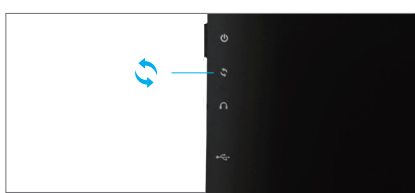
First, install the Android File Transfer application for Mac. Go to android.com/filetransfer on your Mac and choose download now.

3 Install the application.



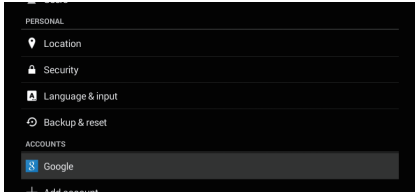
The Android File Transfer application will launch automatically when you connect your tablet. Drag & drop files to transfer.

Reset/Restore



Reset Device

Reset the Device by pressing the button on the back of the tablet with a small object such as a paperclip.



Factory Restore

Select Backup & reset in the settings app to restore factory settings. This will erase all data on the tablet.

Customer Support

Visit ematic.us/support for customer support regarding your device.

To submit a request, fill out the required information online. You will be provided a ticket number regarding your issue, which you can refer to when contacting us further.