

PLEASE READ: IMPORTANT ADAPTATION INFORMATION FOR REGIONS

This datasheet is a WW version and several parts may not be relevant to some markets. It is the responsibility of the local teams to ensure it is thoroughly checked and updated with locally relevant content before it can be used in market. Some areas you need to check are listed below.

PLEASE REMEMBER TO REMOVE THIS PAGE BEFORE YOU RELEASE
THE DATASHEET IN MARKET

PART 1: CONTENT LOCALIZATION IN 4 STEPS

STEP 1: Features and specifications

- Please check the following content on both pages and make sure they are available in your market, else please localize:
 1. Features
 2. Specifications
 3. Accessories and corresponding images
 4. Services
- Please update the last section on the second page on which other relevant product categories the customer should look at if they feel the current product does not suit their requirement

STEP 2: Call-to-action changes

- The toll-free number included on each page is a dummy number. Please customize it to your market.
- Please ensure that all the hyperlinks are appropriately working

STEP 3: Localize legal footnotes

- We try our best to provide guidance on legal footnotes in the WW version especially on standard footnotes and any product claims being made. But it is not practically possible at a WW level to cover all the guidance that can work across multiple geos. It is the responsibility of the local team to check the legal footnotes on both pages and add/remove footnotes per their local legal requirements.
- If you are making any additional product/feature/customer claims, please make sure you support it with the right legal footnotes within the datasheet.

STEP 4: Alliance compliance

- a. MANDATORY:** Local MDA approvals: The WW version has been made MDA compliant. However, it is the responsibility of the geo/region/country team adapting the datasheet to ensure it's uploaded again for MDA compliance after localization.
- b. ALLIANCE FUNDING:** If the datasheet is funded by an alliance partner, please adapt the datasheet to those guidelines. You may choose to remove the Intel logo from both pages if the tactic is not being funded by Intel.

PART 2: SEO COMPLIANCE IN 5 STEPS

Pdfs can get indexed by search engines just like a normal webpage. It's important that we optimize them for search, else they may not rank very high in search results. Or may not get indexed and found at all.

Once you have localized the datasheet content (from PART 1 above) and have the pdf ready, we recommend you follow these simple steps to make this datasheet more SEO-friendly, before you upload the datasheet online. It should take you all of 5 minutes.

You need the full version of Adobe Acrobat (NOT Adobe Reader) to be able to do this. Please request your agency to take care of this.

STEP 1: Is the file name clear and self-explanatory?

If you're changing the file name from what is used for the WW file, then make sure it is not too long and gives an easy indication to the reader what the file is about, eg: **Lenovo ThinkPad Tablet 10.pdf** is fine, but "Lenovo_Vietnam_Hires_53627_convertible.pdf" is not clear.

STEP 2: Has your file metadata been updated?

Go to File>Document properties>Description and update the fields as below:

File – automatically takes the file name you have chosen

Title – Please use **Lenovo ThinkPad Tablet 10**

Author – Lenovo

Subject – Please use - **ThinkPad Tablet 10 provides a full PC experience in the office, at home or on the move, so you can be productive on your terms.**

Keywords – **ThinkPad, Tablet, 64bit OS, Full PC experience, Gorilla Glass, Windows tablet, Long battery life, Full HD Display**

Under Additional metadata (if available in your Adobe Acrobat version), update as follows:

Copyright Status: Choose 'Copyrighted'

Copyright Notice: Copyright (c) 2014 by Lenovo Corporation

Copyright Info URL: <http://www.lenovo.com/legal/copytrade.html>

Under Advanced metadata(if available in your Adobe Acrobat version), update as follows:

Language – choose the appropriate language from dropdown list

STEP 3: Is the reading order correct?

- Select Advanced>Accessibility>Add Tags to Document
- Then, select Advanced>Accessibility>Touch Up Reading Order
- The "reading order" of the PDF is displayed. This shows you what content will be displayed first in a search result. If this is not fixed, sometimes even the legal line can get picked up to display in a search result.
- You can use the same 'Touch Up Reading Order' tool to change the reader order.
- Reading order can be fixed as below – Headline followed by Body copy followed by Why buy section followed by Who buys section.

STEP 4: Have your pdf elements been tagged correctly?

- Go to File>Document properties>Description
- Run an Accessibility Full Check to look for non-compliance.
- Is the body copy on page 1 tagged as text?
- Is the main product image on page 1 tagged as Image/Figure?
- Add the product name as Alt Text to the main product image.

STEP 5: Pdf size and version

1. Total web page weight should not be much more than 1-2MB. If it is more, then go to Advanced>PDF Optimizer and 'right-size' the document.
2. Then select Preferences>General Settings>Optimize for Fast Web View (this allows the PDF to be "loaded" a page at a time, rather than waiting for the whole PDF to download to be able to read)
3. For datasheets which don't have an animated product image on page 1, save your PDF as version 1.6 (Acrobat 7) or lower

Lenovo® recommends Windows 8.

lenovo® **FOR**
THOSE
WHO DO.™

PRE LAUNCH VERSION

THINKPAD® TABLET 10

A TABLET WITHOUT COMPROMISE.

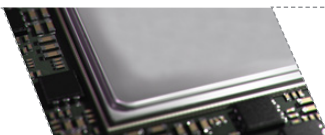
DELIVERING A PC EXPERIENCE AND SUPERIOR VERSATILITY IN THE PALM OF YOUR HAND.



ThinkPad® Tablet 10 provides a full PC experience in the office, at home or on the move, so you can be productive on your terms. But there's no need to sacrifice power for versatility. Windows 8.1 along with a fast Intel Quad Core processor, brilliant 10" Full HD screen and amazing up to 10-hour battery life combine to deliver the power and functionality of a PC in a stylish, convenient tablet.

WHY BUY A
THINKPAD 10?

1 FULL PC EXPERIENCE



Performs like a PC with powerful Intel Quad Core processor, 10" Full HD display, Windows 8.1 with 64-bit support, and more.

2 TOTAL VERSATILITY



Work, play and create just the way you want. Optional keyboard lets ThinkPad 10 switch effortlessly from Tablet to Laptop, Stand modes.

3 GOES ANYWHERE AND EVERYWHERE



Up to 10 hours of battery life plus seamless connectivity (Wi-Fi, WWAN, USB 2.0, micro HDMI) provide the versatility to work anywhere, anytime.

4 STYLISH YET DURABLE



Built to be used in any situation with an elegant, grip-friendly aluminum finish and scratch-resistant Gorilla Glass screen.

5 A COMPLETE ECOSYSTEM DESIGNED FOR PRODUCTIVITY



An ecosystem of accessories, including Digitizer pen, will optimize and protect your investment ensuring you get the most out of your tablet.

WHO NEEDS
A THINKPAD 10?

1

 Business people who want a single device that's easily portable and adapts to any work environment.

2

 Mobile workers who need a device that is totally versatile and easily connected.

3

 People who want a full PC experience in a portable, powerful, versatile device.

0800 123 1234

WWW.LENОВО.COM



Lenovo® recommends Windows 8.

lenovo® **FOR**
THOSE
WHO DO.™

SPECIFICATIONS

PERFORMANCE

Processor

Intel Atom Processor Z3795 SoC Quad Core

Operating System

Windows 8.1
Windows 8.1 Pro

Graphics

Intel HD Graphics (Gen7), DX 11, OCL 1.1 & Open GL 3.2, HDCP 1.4/2.1

Intel GFX with Burst Technology, Full HW acceleration, FHD 1080P@60

Memory

2 GB/4GB SDRAM, LPDDR3-1067

Webcam

2.0MP - 720P with mute function

Storage

eMMC4.51, 64, 128GB

Audio

HD audio w/WaveRT, DSP, MS LYNC certified

Battery

Up to 10 hours of battery

Camera

Front: 2MP (HD1080p)

Rear: 8MP (HD1080p) w/ Auto Focus and Flash

* US, Canada, EU, ANZ

** JP

DESIGN

Display

10.1" (1920 x 1200) WUXGA
IPS and 10 Finger Touch Screen

Dimensions (W X D X H)

WiFi 256.5 x 177 x 8.95
WWAN 256.5 x 177 x 8.95
Smart Card Reader 256.5 x 177 x 16.95

WWAN / WIFI

Sierra EM7345 LTE/HSPA+ 42Mbps M.2*
Sierra EM7340 LTE/HSPA+ 42Mbps M.2
DOCOMO**
Ericsson N5321 3G HSPA + 21Mbps (ROW)
support Win8.1
Broadcom BCM43241 2x2 a/b/g/n+BT

Weight

WiFi: 598g
WWAN: 610g
Smart Card Reader: 660g

Thickness

8.95mm

CONNECTIVITY

I/O (Input / Output ports)

Micro HDMI, Standard USB 2.0 connector x1,
Micro SD slot

SOFTWARE

Lenovo Companion
 Lenovo Support
 Lenovo Tap to Share (QuickCast)
 AccuWeather
 Evernote
 Norton Studio
 Skype
 Zinio
 SinaSocial net
 Iqiyi
 Ctrip
 1-Year Office 365 Personal subscription (Trial only on Win8.1 Pro)
 Norton Internet Security 2014 with 30 days of virus protection
 Nitro Pro 8
 Lenovo Solution Center
 ThinkVantage System Update
 Lenovo Reach
 Hightail -metro (cloud storage)
 Maxthon Browser (Not Available in China)
 Lenovo Photo Editor by CL Metro
 Lenovo Video Editor by CL Metro

ACCESSORIES



ThinkPad 10
Quickshot
Cover



ThinkPad 10
Ultrabook
Keyboard



ThinkPad 10
Digitizer
Pen



ThinkPad 10
Tablet
Dock

WHY THINKPAD®

- Engineered to endure** - Premium materials and layers of reinforcements protect your data even in extreme conditions
- The gold standard in reliability, since 1992** - Superior cooling, spill resistance and dust protection guard against system failure
- Thoughtful design inspired by you** - Every small detail is researched and crafted by our engineers for an enhanced user experience
- Award-winning ergonomic keyboard** - Precision keyboard design for better typing comfort and accuracy
- A new level in mobility** - Stylish multimode convertibles, tablets, ultra-mobile ultrabooks, performance laptops, mobile workstations: there's a ThinkPad for every need

LENOVO SERVICES

ThinkPad Tablet offers a full portfolio of enterprise level services. Better management of multiple devices, more customization options, higher productivity and enhanced security give you the peace of mind you need to get things done.

ADVANCED EXCHANGE* (1 TO 3 YEARS TOTAL DURATION)

Maximize uptime and productivity with an Advanced Exchange Warranty Upgrade. If your tablet should fail, Lenovo will send a replacement to you to exchange for your broken tablet by the next business day.

PRIORITY TECHNICAL SUPPORT *

Makes your priority, our priority. 24x7 priority call routing to advanced-level technicians, electronic incident tracking, and escalation management services.

WARRANTY EXTENSIONS (1 TO 3 YEARS TOTAL DURATION)

This fixed-term, fixed-cost service helps accurately budget for PC expenses, protect your valuable investment, and potentially lower the cost of ownership over time.

* Not available in all regions

ACCIDENTAL DAMAGE PROTECTION

Avoid the hassles of unexpected repair costs. Provides coverage for non-warranted damage incurred under normal operating conditions, such as minor spills, drops, or damage to the integrated screen.

LENOVO IMAGING AND ASSET TAGGING SERVICES

Let the experts in Lenovo's Imaging Technology Center provide the customization your tablet needs to ensure it is secure and ready to meet the needs and requirements of an enterprise organization. Save time and money and make sure your tablets are ready to go right out of the box.



©2014 Lenovo. All rights reserved.

Availability: Offers, prices, specifications and availability may change without notice. Lenovo is not responsible for photographic or typographic errors. **Warranty:** For a copy of applicable warranties, write to: Warranty Information, 500 Park Offices Drive, RTP, NC, 27709, Attn: Dept. ZPYA/B600. Lenovo makes no representation or warranty regarding third-party products or services. **Trademarks:** Lenovo, the Lenovo logo, Rescue and Recovery, ThinkStation, ThinkVantage and ThinkVision are trademarks or registered trademarks of Lenovo. Microsoft, Windows and Vista are registered trademarks of Microsoft Corporation. Intel, the Intel logo, Intel Inside logo, Intel Atom and Intel Atom Inside are trademarks of Intel Corporation in the U.S. and/or other countries. Other company, product and service names may be trademarks or service marks of others. Battery life (and recharge times) will vary based on many factors including system settings and usage. Visit Lenovo.com/safecomputing periodically for the latest information on safe and effective computing.

0800 123 1234

WWW.LENOVO.COM