



STORAGE SOLUTIONS

Office • Commercial • Institutional • Industrial • Educational

www.sanduskylee.com





Opening the door to a greener future...

The decision to be “green” should not be taken lightly, so when Sandusky Lee revamped their Littlestown, Pennsylvania facility, it was decided to take a keen look towards the future. It became quite clear in order to not only sustain the company, but also the environment at large, the facility had to try and offset its carbon footprint and not be entirely reliant on the electrical grid. This decision has solidified Sandusky Lee’s dedication to be an industry leader and will prove to future generations what a company can environmentally achieve.



>> Chart House Energy and GeoSolar Energy Farm Inc. designed, procured, installed and commissioned this 400kW system (the wattage equivalency of powering 8,000 50-watt lightbulbs for one hour).



>> 100% of the solar system was built with U.S.A. owned and manufactured components, creating American jobs.



>> It makes use of under-utilized space, with no continuous draw from MetEd. Additionally, any power that is not used can be sold back to the grid for public consumption.



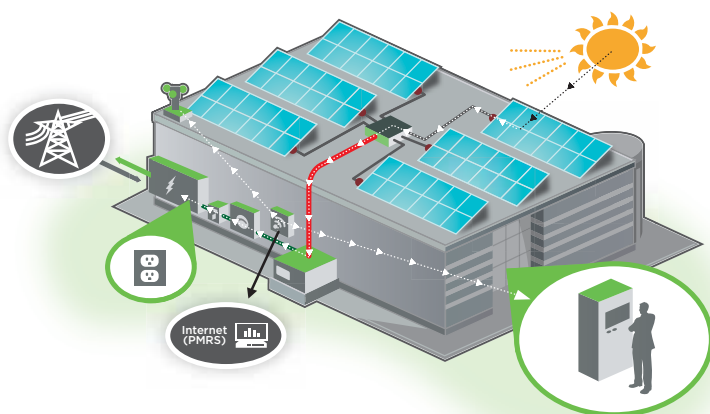
>> These panels function well in less than ideal solar conditions, providing power production in a wide variety of conditions including cloudy and rainy days, and even moonlight.



>> The power generated offsets 92% of the power used in the factory.



>> Assuming the average household uses 6,000 kWh/yr or the equivalent of 86 households of power, the carbon offset will be 12,682 Tons of CO₂ over the next 40 years.



HOW DOES IT WORK?

The 2,700+ solar panels (Photovoltaic Panels) create electrical current when exposed to sunlight, generating 518,000 kWh/yr or the equivalent of 86 homes. Over time, the rows of panels collectively achieve desired voltage and create as much power in a year as the facility uses. The generated electricity can then be used to power the facility or be sold back to the “grid” for general consumption.

TABLE OF CONTENTS

ELITE SERIES STORAGE CABINETS	4
ELITE SERIES RADIUS EDGE / ELITE SERIES SLIDING DOOR STORAGE	6
TRANSPORT SERIES.....	7
ELITE SERIES SEE-THRU	8
CLASSIC SERIES STORAGE.....	9
SYSTEM SERIES	10
STAINLESS STEEL CABINETS	11
MODULAR STORAGE SYSTEM.....	12
PULL-OUT TRAY SHELVES / EXTRA HEAVY-DUTY STORAGE	13
VALUE LINE SERIES WITH FIXED SHELVES / JANITORIAL SUPPLY.....	14
KD / SNAPIT SERIES.....	15
ELITE SERIES WELDED BOOKCASE.....	16
WELDED BOOKTRUCKS	17
WELDED LOCKERS	18
CUBBY STORAGE ORGANIZER / KID BIN ORGANIZATION	19
TABLET SECURITY CARTS	20
LAPTOP SECURITY / AV STORAGE	21
CARTS & STANDS / PLASTIC UTILITY CARTS	22
COMPUTER SECURITY CABINETS.....	23
LATERAL FILES.....	24
VERTICAL FILES	25
STEEL DESKS.....	26
WALL CABINETS.....	28
FLAT FILE / HANGING FILES	29
SAFETY CABINETS	30
ACTIVITY TABLES & WORKSTATION / DOLLIES / PALLET JACK	31
BIN STORAGE / PLASTIC SHELVING	32
CHROME WIRE SHELVING.....	33
STEEL SHELVING / PALLET RACK COMPONENTS	34
WAGONS / SHOPPING CARTS.....	36
WAGONS	37
FINISHES / PACKAGING	38

ELITE SERIES STORAGE CABINETS



Storage Cabinets with Recessed Handle

Heavy gauge steel, contract quality, meets ANSI/BIFMA shelf standards. Four fully adjustable shelves on 2" centers, plus raised bottom shelf, contemporary three point recessed locking handle, three sets of hinges on each door. Five year limited warranty. Powder coat finish. Shipped assembled (♦).

EA3R 242460-00 (NOT SHOWN)	24"W X 24"D X 60"H (SINGLE DOOR WITH THREE ADJUSTABLE SHELVES)
EA4R 361872-00	36"W X 18"D X 72"H
EA4R 361878-00	36"W X 18"D X 78"H
EA4R 362472-00	36"W X 24"D X 72"H
EA4R 362478-00	36"W X 24"D X 78"H
EA4R 462472-00	46"W X 24"D X 72"H
EA4R 462478-00	46"W X 24"D X 78"H

♦ Handle requires some assembly.



Storage Cabinets with 1 Swing Handle and 1 Dummy Handle

Heavy gauge steel, contract quality, meets ANSI/BIFMA shelf standards. Four fully adjustable shelves on 2" centers, plus raised bottom shelf, contemporary three point swing locking handle, three sets of hinges on each door. Five year limited warranty. Powder coat finish. Shipped assembled (♦).

EA42 361872-00	36"W X 18"D X 72"H
EA42 361878-00	36"W X 18"D X 78"H
EA42 362472-00	36"W X 24"D X 72"H
EA42 362478-00	36"W X 24"D X 78"H
EA42 462472-00	46"W X 24"D X 72"H
EA42 462478-00	46"W X 24"D X 78"H

♦ Handle requires some assembly.



Storage Cabinets with Keyless Electronic Handle

Heavy gauge welded steel construction, meets ANSI/BIFMA shelf standards. Four adjustable shelves on 2" centers, plus raised bottom shelf. Three sets of hinges on each door. The cabinets are equipped with a keyless electronic coded locking system. The coded lock is available with two passwords, the administrator and the user. These can be changed to any combination of numbers, four for the user and six for the administrative password. The keypad also keeps a record of the day, date and time of when the cabinet is accessed, which can be displayed when the mechanism is idle. Emergency key included. Powder coat paint finish.

EA4E 361872-00	36"W X 18"D X 72"H
EA4E 361878-00	36"W X 18"D X 78"H
EA4E 362472-00	36"W X 24"D X 72"H
EA4E 362478-00	36"W X 24"D X 78"H
EA4E 462472-00	46"W X 24"D X 72"H
EA4E 462478-00	46"W X 24"D X 78"H



ELITE SERIES STORAGE CABINETS

A. Desk Height Cabinets

with adjustable shelf

Heavy gauge steel, contract quality, meets ANSI/BIFMA shelf standards. One fully adjustable shelf plus raised bottom shelf. EA11 361830-00 has three point locking handle. EA11 182430-00 has cam locking handle. Powder coat finish. Shipped assembled (♦).

EA11	182430-00	18"W X 24"D X 30"H
EA11	361830-00	36"W X 18"D X 30"H

B. Counter Height Cabinets

with adjustable shelves

Heavy gauge steel, contract quality, meets ANSI/BIFMA shelf standards. Two fully adjustable shelves plus raised bottom shelf. Contemporary three point recessed locking handle. Five year limited warranty. Powder coat finish. Shipped assembled (♦).

EA2R	361842-00	36"W X 18"D X 42"H
EA2R	362442-00	36"W X 24"D X 42"H
C. EA2R	462442-00*	46"W X 24"D X 42"H

* Shown with optional laminate woodgrain top.

TM04624	46"W X 24"D MEDIUM OAK TOP
---------	----------------------------

D. Combination Cabinets

with adjustable shelves

Combination cabinet interior includes a full width top shelf, three adjustable side shelves, and a garment rod. Contemporary three point recessed locking handle. Powder coat finish. Interior requires assembly (♦).

EACR	361872-00	36"W X 18"D X 72"H
EACR	361878-00	36"W X 18"D X 78"H
EACR	362472-00	36"W X 24"D X 72"H
EACR	362478-00	36"W X 24"D X 78"H
EACR	462472-00	46"W X 24"D X 72"H

Available with 1 swing handle and 1 dummy handle, replace "R" with "2" in stock number.

E. Wardrobe Cabinets

with adjustable shelf

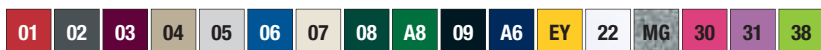
Wardrobe cabinet interior includes a full shelf and garment rod. Contemporary three point recessed locking handle. Powder coat finish. Interior requires assembly (♦).

EAWR	361872-00	36"W X 18"D X 72"H
EAWR	361878-00	36"W X 18"D X 78"H
EAWR	362472-00	36"W X 24"D X 72"H
EAWR	362478-00	36"W X 24"D X 78"H
EAWR	462472-00	46"W X 24"D X 72"H
EAWR	462478-00	46"W X 24"D X 78"H

Swing handle available, replace "R" with "2" in model number.

Electronic entry available, replace "R" with "E" in model number.

♦ Handle requires some assembly.



ELITE SERIES RADIUS EDGE



Radius Profile

Radius Edge Storage

Heavy 22 gauge, welded steel construction. Contract quality, meets ANSI/BIFMA shelf standards. One center fixed shelf and three fully adjustable shelves on 2" centers plus raised bottom shelf. Contemporary push button door handle with keys. Leg levelers allow adjustments for uneven flooring. Three sets of hinges on each door. Powder coat finish. Shipped assembled.

ER4P 361872-00	36"W X 18"D X 72"H
ER4P 362472-00	36"W X 24"D X 72"H



Radius Profile

Radius Edge Clear View Storage

Durable acrylic doors provide full visibility of contents. Center fixed shelf and three fully adjustable shelves on 2" centers plus raised bottom shelf. Contemporary push button door handle with keys. Leg levelers. Meets/exceeds ANSI/BIFMA shelf standards. Powder coat finish. Shipped assembled.

ER4V 361872-00	36"W X 18"D X 72"H
ER4V 362472-00	36"W X 24"D X 72"H



ELITE SERIES SLIDING DOOR STORAGE



Sliding Door Storage Cabinets

Convenient, space-saving sliding door cabinets with locking doors. Fully adjustable shelves adjust on 1" centers plus raised bottom shelf. Welded steel construction. Powder coat finish. Shipped assembled.

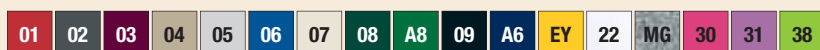
BA1S	361829-00	36"W X 18"D X 29"H
BA2S	361842-00	36"W X 18"D X 42"H
BA4S	361872-00	36"W X 18"D X 72"H

Sliding Door Clear View Storage Cabinets

Durable acrylic doors provide full visibility of contents. Convenient, space-saving sliding door cabinets with locking doors. Fully adjustable shelves adjust on 1" centers plus raised bottom shelf. Welded steel construction. Powder coat finish. Shipped assembled.

BV4S	361872-00	36"W X 18"D X 72"H
------	-----------	--------------------

F.O.B. California and Tennessee - sliding doors only.



Transport[®] SERIES

Mobile Storage For Material Handling, Schools - Commercial - Industrial

Heavy gauge steel (20/22 gauge). Welded steel construction. Powder coat finish. Shipped assembled (+). Optional side handle available.

A. Transport Mobile Storage with 4 adjustable shelves

B.	TA3R	242460-00*	24"W X 24"D X 66"H
	TA4R	302466-00	30"W X 24"D X 72"H
	TA3R	362460-00*	36"W X 24"D X 66"H
	TA4R	362472-00	36"W X 24"D X 78"H
	TA3R	462460-00*	46"W X 24"D X 66"H
	TA4R	462472-00	46"W X 24"D X 78"H

* Three adjustable shelves.

C. Transport Mobile Wardrobe with wardrobe bar

Full width adjustable shelf with wardrobe bar.

TAWR	362472-00	36"W X 24"D X 78"H
TAWR	462472-00	46"W X 24"D X 78"H

D. Transport Mobile Combination with sectioned interior

Full top shelf and three adjustable side shelves, plus bottom. Open section has wardrobe bar. Interior requires assembly (+).

TACR	362460-00*	36"W X 24"D X 66"H
TACR	362472-00	36"W X 24"D X 78"H
TACR	462472-00	46"W X 24"D X 78"H

* No top shelf.

E. Transport Work Height Storage with adjustable shelves

Large capacity, two adjustable shelves plus bottom shelf.

TA2R	462442-00	46"W X 24"D X 48"H
------	-----------	--------------------

F. Transport Work Height Storage with adjustable shelves

Fully adjustable shelf plus bottom shelf. Swing handle with cam lock on single door model; three point lock on double door model (not shown).

TA11	182430-00	18"W X 24"D X 36"H
TA11	361830-00	36"W X 18"D X 36"H
TA11	362430-00	36"W X 24"D X 36"H
TA21	362442-00	36"W X 24"D X 48"H

G. Side Handle For Transports

Attaches to either side using bolts/nuts provided. Additional backer support plate attaches to the inside for maximum support. Holes must be drilled in cabinet to attach handle. Order to match your cabinet color.

TSH-00	23"W X 4½"D X 5"H
--------	-------------------

+ Handle and casters require some assembly.

Height includes 6" for casters.

Caster and Mounting/Support Base Specifications for Sandusky Lee Transport[®] Cabinets

Casters mount to a 6" wide full depth heavy-duty plate that bolts through the cabinet bottom into 1¼" angle iron that runs the width of the cabinet, front and back. All interior bolts and angle iron are concealed from view by a false bottom shelf. (U.S. Patent No. 5980008) Swivel polypropylene casters. Overall caster height is 6", 2 have side brake locks, 5" wheel diameter, 1¼" wheel width. Heavy gauge steel support plate. Fastening bolts with flat washers and locking nuts included.



01	02	03	04	05	06	07	08	A8	09	A6	EY	22	MG	30	31	38
----	----	----	----	----	----	----	----	----	----	----	----	----	----	----	----	----



ELITE SERIES SEE-THRU



A



B



C



D



E



F



Expanded Metal Front

A. Clear View Storage Cabinet

Durable acrylic doors provide full visibility of contents. Fully adjustable shelves on 2" centers plus raised bottom shelf. Three point door locking system. Meets ANSI/BIFMA shelf standards. Powder coat finish. Shipped assembled (•).

CA4V	361272-00	36"W X 12"D X 72"H
CA4V	361872-00	36"W X 18"D X 72"H
CA4V	361878-00	36"W X 18"D X 78"H
CA4V	362472-00	36"W X 24"D X 72"H
EA4V	362478-00	36"W X 24"D X 78"H
» EA4V	461872-00	46"W X 18"D X 72"H
» EA4V	462472-00	46"W X 24"D X 72"H
» EA4V	462478-00	46"W X 24"D X 78"H

B. Clear View Counter Height Cabinet

Durable acrylic doors provide full visibility of contents. Fully adjustable shelves on 2" centers plus raised bottom shelf. Three point door locking system. Meets ANSI/BIFMA shelf standards. Powder coat finish. Shipped assembled (•).

CA2V	361242-00	36"W X 12"D X 42"H
CA2V	361842-00	36"W X 18"D X 42"H
CA2V	362442-00	36"W X 24"D X 42"H
» EA2V	461842-00	46"W X 18"D X 42"H
» EA2V	462442-00	46"W X 24"D X 42"H

C. Transport Mobile Clear View Cabinet

Durable acrylic doors provide full visibility of contents. Fully adjustable shelves on 2" centers plus raised bottom shelf. Three point door locking system. Meets ANSI/BIFMA shelf standards. Patented heavy-duty caster base. Powder coat finish. Shipped assembled (•).

TA4V	361872-00	36"W X 18"D X 78"H
TA4V	362472-00	36"W X 24"D X 78"H
» TA4V	461872-00	46"W X 18"D X 78"H
» TA4V	462472-00	46"W X 24"D X 78"H

Height includes 6" for casters.

D. Transport Mobile Clear View Counter Height

Durable acrylic doors provide full visibility of contents. Fully adjustable shelves on 2" centers plus raised bottom shelf. Three point door locking system. Meets ANSI/BIFMA shelf standards. Patented heavy-duty caster base. Powder coat finish. Shipped assembled (•).

TA2V	361842-00	36"W X 18"D X 48"H
TA2V	362442-00	36"W X 24"D X 48"H
» TA2V	461842-00	46"W X 18"D X 48"H
» TA2V	462442-00	46"W X 24"D X 48"H

Height includes 6" for casters.

E. Expanded Metal Front Stationary Cabinet

See-thru, ventilated, heavy gauge expanded metal front doors. Doors are 22 gauge. Four fully adjustable shelves on 2" centers, plus raised bottom shelf. Three point door locking system. Meets/exceeds ANSI/BIFMA shelf standards. Powder coat finish. Shipped assembled (•).

CA4M	361872-00	36"W X 18"D X 72"H
CA4M	362472-00	36"W X 24"D X 72"H
EA4M	461872-00	46"W X 18"D X 72"H
EA4M	462472-00	46"W X 24"D X 72"H

Height includes 6" for casters.

F. Expanded Metal Front Transport Mobile Cabinet

See-thru, ventilated, heavy gauge expanded metal front doors. Doors are 22 gauge. Four fully adjustable shelves on 2" centers, plus raised bottom shelf. Three point door locking system. Meets/exceeds ANSI/BIFMA shelf standards. Shipped assembled (handles/lock require some assembly - casters require assembly). Mobile Cabinets have superior patented caster base (see page 36). Optional side handle available for ease in navigating. Height includes 6" for casters. Powder coat finish.

TA4M	361872-00	36"W X 18"D X 78"H
TA4M	362472-00	36"W X 24"D X 78"H
TA4M	461872-00	46"W X 18"D X 78"H
TA4M	462472-00	46"W X 24"D X 78"H

• Handle and casters require some assembly.

» Extra Large Capacity



CLASSIC SERIES STORAGE

A. Storage Cabinets

with adjustable shelves

Four fully adjustable shelves on 2" centers, plus raised bottom shelf, three point door lock system, three sets of hinges per door. Meets ANSI/BIFMA shelf standards. Welded steel construction. Powder coat finish. Shipped assembled (*).

CA41	361872-00	36"W X 18"D X 72"H
CA41	361878-00	36"W X 18"D X 78"H
CA41	362472-00	36"W X 24"D X 72"H
CA41	362478-00	36"W X 24"D X 78"H

B. Counter Height Cabinet

with adjustable shelves

Two fully adjustable shelves on 2" centers, plus raised bottom shelf, three point door lock system. Meets ANSI/BIFMA shelf standards. Welded steel construction. Powder coat finish. Shipped assembled (*).

CA21	361842-00	36"W X 18"D X 42"H
CA21	362442-00	36"W X 24"D X 42"H

C. Combination Cabinets

with adjustable shelves

Combination cabinet interior includes a full width top shelf, three adjustable side shelves, and a garment rod. Powder coat finish. Interior requires assembly (*).

CAC1	361872-00	36"W X 18"D X 72"H
CAC1	361878-00	36"W X 18"D X 78"H
CAC1	362472-00	36"W X 24"D X 72"H
CAC1	362478-00	36"W X 24"D X 78"H

NOTE: See accessories section of price list for combination kit only.

D. Wardrobe Cabinets

with adjustable shelf

Wardrobe cabinet interior includes a full width shelf and garment rod. Powder coat finish. Interior requires assembly (*).

CAW1	361872-00	36"W X 18"D X 72"H
CAW1	361878-00	36"W X 18"D X 78"H
CAW1	362472-00	36"W X 24"D X 72"H
CAW1	362478-00	36"W X 24"D X 78"H

NOTE: See accessories section of price list for wardrobe kit only.



* Handle and locks require some assembly.



SYSTEM SERIES



A



B



C



D



E



A. Single Door Wardrobe with file drawer

Full recessed pull, with cam lock. One adjustable shelf with wardrobe bar. Full suspension file drawer.

HAWF 171864-00	17"W X 18"D X 64"H
----------------	--------------------

B. Single Door Storage with file drawer

Full recessed pull, with cam lock. Three adjustable shelves. Full suspension file drawer.

HADF 171864-00	17"W X 18"D X 64"H
----------------	--------------------

C. Storage Cabinet with file drawer

Full recessed pull, with recessed push button handle. Two adjustable shelves and one center fixed shelf, plus bottom shelf. Full suspension file drawer.

HADF 301864-00	30"W X 18"D X 64"H
HFDF 301842-00*	30"W X 18"D X 42"H

* 1 Fixed Shelf

D. Double Door Storage with adjustable shelves

Full recessed pull, with recessed push button handle. Two adjustable shelves and one center fixed shelf, plus bottom shelf.

HF2F 301842-00*	30"W X 18"D X 42"H
HA3F 301864-00	30"W X 18"D X 64"H
HA3F 361864-00	36"W X 18"D X 64"H

* 2 Fixed Shelves



Push Button
Recessed Handle

E. Bookcases with File Drawer 18" depths

Full suspension locking file drawer holds letter or legal hanging files. Shelves adjust on 1" centers. Full width pull handle. Powder coat finish. Shipped assembled.

BD10 361842-00 one shelf and bottom shelf	36"W X 18"D X 42"H
BD30 361872-00 three shelves and bottom shelf	36"W X 18"D X 72"H

STAINLESS STEEL CABINETS

Stainless Steel Storage Cabinets

Constructed of heavy 18-gauge type 304 stainless steel. These cabinets resist acid, corrosion and rust. Ideal for food service, wash-down and cleanroom environments. Shelves adjust in 2" increments, 500 lbs. capacity per shelf. Stainless steel recessed paddle lock handle. Full piano hinges. Fully welded assembled cabinets.

SA1D	301230-XX	30"W X 12"D X 30"H	WALL CABINET WITH PADDLE LOCK
SA2D	361842-XX	36"W X 18"D X 42"H	CABINET WITH PADDLE LOCK
SA4D	361872-XX	36"W X 18"D X 72"H	CABINET WITH PADDLE LOCK
SA4D	362478-XX	36"W X 24"D X 78"H	CABINET WITH PADDLE LOCK
SA4D	482478-XX	48"W X 24"D X 78"H	CABINET WITH PADDLE LOCK
SA4V	361872-XX*	36"W X 18"D X 72"H	CLEAR VIEW CABINET WITH SWING HANDLE LOCK
SA4V	482478-XX*	48"W X 24"D X 78"H	CLEAR VIEW CABINET WITH SWING HANDLE LOCK



Paddle Lock



Leg Levelers



Steel Legs (Optional)
Use "L" after "XX" code

* Clear View Cabinet available with swing handle only

All products on this page F.O.B. Pennsylvania and Tennessee only.



(Shown With Optional Legs)

MODULAR STORAGE SYSTEM



Wall Cabinet



Base Cabinet



Storage Cabinet



Single Door Cabinet

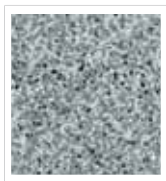
Modular Storage System

Modular designed to custom configure any workspace. Durable all welded steel construction with 2-tone color powder coat finish. Full length door pull with push button locking handle/keys. Four leveling guides for uneven flooring. 200lb. capacity shelves.

GW1F301226	30"W X 12"D X 26"H	WALL CABINET	1 ADJUSTABLE SHELF
GADF301836	30"W X 18"D X 36"H	BASE CABINET WITH DRAWER	1 ADJUSTABLE SHELF
GA3F241872	24"W X 18"D X 72"H	SINGLE DOOR CABINET	3 ADJUSTABLE SHELVES
GF3F361872	36"W X 18"D X 72"H	STORAGE CABINET	1 FIXED SHELF 2 ADJUSTABLE SHELVES
GF3F462472	46"W X 24"D X 72"H	JUMBO STORAGE CABINET	1 FIXED SHELF 2 ADJUSTABLE SHELVES
GACF361872	36"W X 18"D X 72"H	COMBINATION STORAGE CABINET	1 FULL TOP SHELF, 3 ADJUSTABLE HALF SHELVES, HANGER BAR



Push Button
Recessed Handle



Multi Granite



Leg Levelers

PULL-OUT TRAY SHELVES

Pull-Out Tray Shelves

Convenient pull-out shelves on full extension ball-bearing slides. Tray design shelves (1¼" side/back lip, ½" front lip) hold 200 lbs. each and have a built in interlock system to prevent more than one shelf from opening at a time to avoid tipping. Three point locking handle/keys secure the contents. Four leg levelers to keep cabinet level on uneven surface. Powder coat finish.

ET52362466-00LL	36"W X 24"D X 66"H
-----------------	--------------------

Has two pull-out bottom shelves, center fixed shelf and two top adjustable shelves.

ET22362466-00LL	36"W X 24"D X 66"H
-----------------	--------------------

F.O.B. California, Pennsylvania and Tennessee only.



EXTRA HEAVY-DUTY STORAGE

Extra Heavy-Duty Storage Cabinets

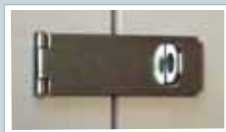
All welded 16-gauge steel construction. Superior strength and security. Paddle style handle with three point lock system with key lock (keys included). Additional hasp included for optional padlock use. Four heavy 16-gauge shelves adjust on 2" centers and support 1,000 lbs. evenly dispersed. Strong steel legs raise the cabinet 7" off the floor. Full piano hinge. Charcoal powder coat finish.

XA4D361872-00LH	36"W X 18"D X 79"H
XA4D362472-00LH	36"W X 24"D X 79"H
XA4D461872-00LH	46"W X 18"D X 79"H
XA4D462472-00LH	46"W X 24"D X 79"H

F.O.B. Pennsylvania and Tennessee only.



Paddle Lock



Hasp



VALUE LINE SERIES WITH FIXED SHELVES



A



B



C



D

A. Storage Cabinet with fixed shelves

Extra tall (72") and three fixed shelves allowing extra space between shelves for taller objects. Locking cam handle. Powder coat finish. Shipped assembled (*).

VF31301872-00

30"W X 18"D X 72"H

B. Storage Cabinet with fixed shelves

Three fixed shelves. Cam locking handle. Powder coat finish. Shipped assembled (*).

VF31301566-00

30"W X 15"D X 66"H

C. Storage Cabinet with fixed shelves

Four fixed shelves. Powder coat finish. Shipped assembled (*).

VF41361872-00

36"W X 18"D X 72"H

D. Counter Height Cabinet with fixed shelves

Convenient counter height. Shown with optional laminate woodgrain work top. Cam locking handles. Two fixed shelves, plus flat bottom shelf space, welded steel construction. Powder coat finish. Shipped assembled (*).

VF21 361842-00

36"W X 18"D X 42"H

TM03618*

36"W X 18"D MEDIUM OAK TOP

* Shown with optional laminate woodgrain top.

• Handle requires some assembly.



05 07 09

JANITORIAL SUPPLY



Janitorial Supply Cabinet

Three storage shelf spaces 20"W x 14"D x 12"H. Organize building maintenance and cleaning supplies. Storage for brooms, mops, vacuum cleaners, etc. Locking handle for increased safety and security. Powder coat finish. Shipped assembled (*).

VFC1 301566-00

30"W X 15"D X 66"H

Three storage shelf spaces 20"W x 14"D x 12"H.

EFC1 362472-00

36"W X 24"D X 72"H

Three storage shelf spaces 20"W x 23"D x 17"H.

• Handle requires some assembly.



05 07 09

A. SnapIt™ Counter Height Cabinet with adjustable shelves

Easy snap-together design assembles in minutes. Three point locking system for security. Shelves adjust on 2" increments. Chrome locking handles with two keys.

RTA 7001-00	36"W X 18"D X 42"H
-------------	--------------------

B. SnapIt™ Storage Cabinet with adjustable shelves

Easy snap-together design assembles in minutes. Three point locking system for security. Shelves adjust on 2" increments. Chrome locking handles with two keys.

RTA 7000-00	36"W X 18"D X 72"H
-------------	--------------------

C. SnapIt™ Bookcases with adjustable shelves

Easy snap-together design assembles in minutes. 200-lb capacity shelves adjust in 2" increments.

BQ10 351330-00 one adjustable shelf and bottom shelf	34½"W X 13"D X 30"H
BQ20 351342-00 two adjustable shelves and bottom shelf	34½"W X 13"D X 42"H
BQ30 351352-00 three adjustable shelves and bottom shelf	34½"W X 13"D X 52"H
BQ40 351372-00 four adjustable shelves and bottom shelf	34½"W X 13"D X 72"H
BQ50 351384-00 five adjustable shelves and bottom shelf	34½"W X 13"D X 84"H

D. SnapIt™ Storage Cabinet with Keyless Electronic Coded Lock

Boltless ready-to-assemble metal door cabinets just snap together. Shelves adjust on 2" increments and concealed door hinges swivel 270°. The cabinets are equipped with a keyless electronic coded locking system. The coded lock is available with two passwords, one for the administrator and one for the user. These can be changed to any combination of numbers, four for the user and six for the administrative password. The keypad also keeps a record for the day, date and time of when the cabinet is accessed, which can be displayed when the mechanism is idle. Exterior battery pack can be plugged into keypad and key included.

KDE7236-00	36"W X 18"D X 72"H
KDE7824-00	36"W X 24"D X 78"H
KDE7848-00	48"W X 24"D X 78"H

E. SnapIt™ Lockers

Full Length

KDCL7212/1	12"W X 18"D X 72"H	SINGLE WIDTH LOCKER	2 REMOVABLE SHELVES 1 FIXED SHELF
KDCL7236/3	36"W X 18"D X 72"H	TRIPLE WIDTH LOCKER	2 REMOVABLE SHELVES 1 FIXED SHELF

Double Tier

KDCL7212/2	12"W X 18"D X 72"H	SINGLE WIDTH LOCKER	1 REMOVABLE SHELF 1 FIXED SHELF
KDCL7236/6	36"W X 18"D X 72"H	TRIPLE WIDTH LOCKER	1 REMOVABLE SHELF 1 FIXED SHELF



F.O.B. Illinois only.

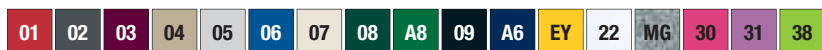


ELITE SERIES WELDED BOOKCASE



Radius Profile

Leg Levelers



Bookcases

12" and 18" depths

Fully adjustable shelves adjust on 1" centers plus raised bottom shelf. Welded steel construction. Shelf depth is 12½" on 13" deep series. 200 LB shelf capacity. Powder coat finish. Shipped assembled.

BA10 341230-00	one shelf and bottom shelf	34½"W X 12½"D X 30"H
BA10 361830-00	one shelf and bottom shelf	36"W X 18"D X 30"H
BA20 341242-00	two shelves and bottom shelf	34½"W X 12½"D X 42"H
BA20 361842-00	two shelves and bottom shelf	36"W X 18"D X 42"H
» BA20 461842-00	two shelves and bottom shelf	46"W X 18"D X 42"H
BA30 341252-00	three shelves and bottom shelf	34½"W X 12½"D X 52"H
BA30 361852-00	three shelves and bottom shelf	36"W X 18"D X 52"H
BA30 341260-00	three shelves and bottom shelf	34½"W X 12½"D X 60"H
BA40 341272-00	four shelves and bottom shelf	34½"W X 12½"D X 72"H
» BA40 361872-00	four shelves and bottom shelf	36"W X 18"D X 72"H
BA40 461872-00	four shelves and bottom shelf	46"W X 18"D X 72"H
BA50 341282-00	five shelves and bottom shelf	34½"W X 12½"D X 82"H
BA50 361884-00	five shelves and bottom shelf	36"W X 18"D X 84"H

» Extra Large Capacity

Mobile Bookcases

18" depths

Fully adjustable shelves adjust on 1" centers plus raised bottom shelf. Welded steel construction. Heavy-duty patented caster base (see page 36), 2 locking. Shipped assembled except for casters.

BM10 361830-00	one shelf and bottom shelf	36"W X 18"D X 36"H
BM20 361842-00	two shelves and bottom shelf	36"W X 18"D X 48"H
BM30 361852-00	three shelves and bottom shelf	36"W X 18"D X 58"H
BM40 361872-00	four shelves and bottom shelf	36"W X 18"D X 78"H

Height includes 6" casters

Radius Edge Stationary Bookcases

Fully adjustable shelves adjust on 1" centers plus raised bottom shelf. Leg levelers. Welded steel construction. Powder coat finish. Shipped assembled.

BA1R 361830-00	one shelf and bottom shelf	36"W X 18"D X 30"H
BA2R 361842-00	two shelves and bottom shelf	36"W X 18"D X 42"H
BA3R 361852-00	three shelves and bottom shelf	36"W X 18"D X 52"H
BA4R 361872-00	four shelves and bottom shelf	36"W X 18"D X 72"H



WELDED BOOKTRUCKS

These heavy-duty all welded steel booktrucks offer maximum strength to efficiently store and transport books, reference materials, binders, video tapes and much more to any location. Booktruck [A] features 3" chrome ball casters. Booktrucks [B] through [F] have perforated side panels and feature four industrial (200 lb. rated) 5" swivel casters all with locking brake for safety and smooth rounded handles for a comfortable grip and easier control when moving. Sloped backs are 6" deep. Frames are 18 gauge and shelves are 20 gauge. Durable powder coat finish available in all color options.

A. Sloped-Shelf Booktruck

Features two sloped shelves and 3" chrome ball casters for easy movement. 13½" clearance between each shelf.

SR227-00*	27"W X 9½"D	29"W X 14"D X 25"H
-----------	-------------	--------------------

* Shipped UPS

B. Single Sided Sloped-Shelf Booktruck

Features three sloped shelves with 12" clearance between each shelf. Available in three sizes.

SL33017-00*	16"W X 9½"D	18"W X 14"D X 46"H
SL327-00*	26"W X 9½"D	28"W X 14"D X 46"H
SL330-00	30"W X 9½"D	32"W X 14"D X 46"H

* Shipped UPS

C. Double Sided Sloped-Shelf Booktruck

Offers more storage space featuring six sloped shelves with 12" clearance between each shelf.

SV336-00	36"W X 6¾"D	39"W X 19"D X 46"H
----------	-------------	--------------------

D. Flat-Shelf Booktruck

Features three flat shelves with 12" clearance between each shelf. Offers a large shelf clearance ideal for bulky items.

SF336-00	36"W X 17½"D	39"W X 19"D X 46"H
----------	--------------	--------------------

E. Combination-Shelf Booktruck

Combines flat shelf and sloped shelves in one. Features four top sloped shelves and one bottom flat shelf. 12" clearance between each shelf.

SVF336-00	SLOPED: 36"W X 6¾"D FLAT: 36"W X 17½"D	39"W X 19"D X 46"H
-----------	---	--------------------

F. Combination-Shelf Booktruck

Combines flat shelf and sloped shelves in one. Features one top flat shelf and four bottom sloped shelves. 12" clearance between each shelf.

SFV336-00	SLOPED: 36"W X 6¾"D FLAT: 36"W X 17½"D	39"W X 19"D X 46"H
-----------	---	--------------------

F.O.B. Pennsylvania only.



WELDED LOCKERS



Welded Steel Colored Lockers

These designer steel lockers are built to last and feature cool colors that kids and teens will love. Great for storing school supplies, books, back packs, clothes, shoes, and much more. All lockers are Greenguard Certified. Durable welded steel construction with powder coat finish. Louvered vents on doors for proper air ventilation. Die cast handle accommodates a standard padlock to secure belongings. All lockers include a number plate for each door; additional number plate sets can be ordered. Single tier 48" and 66"H locker includes top shelf, two side hooks and center hook; single tier 24"H, double and triple tier lockers include two side hooks per opening. 24"H can be stacked on top of one another or single stacked on top of 48"H locker. Shipped assembled (except for handle, hooks, and number plate).

SINGLE TIER LF11 151524-00	15"W X 15"D X 24"H	24" HIGH COMPARTMENT	2.7 UNIT CUBE	APPROX. UNIT WEIGHT 20 LBS.
SINGLE TIER LF11 151548-00	15"W X 15"D X 48"H	48" HIGH COMPARTMENT	5.0 UNIT CUBE	APPROX. UNIT WEIGHT 36 LBS.
SINGLE TIER LF11 151866-00	15"W X 18"D X 66"H	66" HIGH COMPARTMENT	10.3 UNIT CUBE	APPROX. UNIT WEIGHT 48 LBS.
DOUBLE TIER LF22 151866-00	15"W X 18"D X 66"H	30" HIGH COMPARTMENT	10.3 UNIT CUBE	APPROX. UNIT WEIGHT 55 LBS.
TRIPLE TIER LF33 151866-00	15"W X 18"D X 66"H	19" HIGH COMPARTMENT	10.3 UNIT CUBE	APPROX. UNIT WEIGHT 57 LBS.
FIVE TIER LF55 151866-00	15"W X 18"D X 66"H	11" HIGH COMPARTMENT	10.3 UNIT CUBE	APPROX. UNIT WEIGHT 60 LBS.



CUBBY STORAGE ORGANIZER



Cubby Storage Organizer

Heavy-duty, welded all steel Cubby Cabinet available with 9 or 12 storage sections. Ideal for visual organization. Easy opening is 14½"W X 17½"D X 15"H. Powder coat finish. Greenguard certified.

IC00461852-00	46"W X 18"D X 52"H	9 SECTIONS	125 LB. CAPACITY
IC00461866-00	46"W X 18"D X 66"H	12 SECTIONS	155 LB. CAPACITY

01	02	03	04	05	06	07	08	A8	09	A6	EY	22	MG	30	31	38
----	----	----	----	----	----	----	----	----	----	----	----	----	----	----	----	----



KID BIN ORGANIZATION



Kid Bin Organization

Compact four level bin organizer. 12 multi color bins: 4 large bins measure 16½" x 11½" x 5¼", 8 small bins 8½" x 11½" x 5¼". Bins are safe for kids and BPA free. Two color versions – bright and pastel. Laminate side panels make for easy cleaning. Side handles for easy carrying. KD – Easy assembly.

KBO-341030BC	34"W X 10½"D X 30⅞"H	BRIGHT
KBO-341030PC	34"W X 10½"D X 30⅞"H	PASTEL

F.O.B. Illinois only.

TABLET SECURITY CARTS



Mobile Tablet Storage Cart

40 tablet capacity, 20 tablets on each of two shelves. Upper inside shelf is for laptop storage. All three shelves adjust on 2" centers and have anti-skid mats. The divider is 4" x 15½" x 1¼" in between. The top of the cart has an anti-skid mat and wire grommets to the inside of the cart. A bottom shelf is provided for storage or mounting the power strip and the USB Hubs (optional). Wires can be run from the front or rear of the cart using mounting clips that receive the cables. Front and rear doors have full piano hinges and two-point locking paddle handles/keys. Ventilation holes for air circulation. Powder coat finish.

MTS362437-00

36"W X 24"D X 43"H
(WITH CASTERS)

F.O.B. Pennsylvania only.

A/C Charging System (OPTIONAL)

Model #TCS-40 A/C power strip that is surge protected.

TCS-40

ORDER SEPARATELY



Tablet Security Cart

Easy to assemble design. Laminate construction with steel shelves and dividers in a platinum powder coat finish. Stores, secures and transports up to 24 tablets/netbooks (when storing 2 per divided slot). Locking tambour door with 2 keys can be easily opened and closed to access tablets. The space saving tambour door lifts into the cart and doesn't open into work area. Port hole in back panel allows power cords to be plugged in while the cabinet is locked (power strips are not included). Top shelf includes 11 removable dividers (additional dividers available but not required). Bottom tray-style shelf for storing power strips, books, etc. Tray can be reversed to create a shelf to install additional dividers to hold more tablets/netbooks if needed. 4 swivel casters for easy turning and smooth cornering, with 2 locking brakes to prevent rolling when cart is stationary. Ideal for classrooms and training facilities.

5423-32

26"W X 17¾"D X 34¾"H

F.O.B. Illinois only.

Dividers (3 per pack) (OPTIONAL)

5425-32

ORDER SEPARATELY



LAPTOP SECURITY / AV STORAGE

A. Wall-Mount Laptop Safe/Security Cabinet

Powder coated charcoal color in stock. Custom colors available upon request. 20 gauge welded steel construction. Fits most laptops that are 17" or smaller. The platform where the laptop sits is 12¼"H x 17¼"W and comes with a cushioned pad. When the door is down the length from the back of the cabinet to the top of the door (platform) is 18¾". Electronic keypad lock run by 4-AA batteries. No need for keys. Has administrative password and user password. Both can be changed. Keypad has two backup emergency means. The first is an external power source. If the battery fails, it plugs into the keypad. The second is a key, if the code is forgotten. This is located under the handle plate. The platform has adjustable elastic straps to hold the laptop securely in place when closed. The left and right sides of the unit each have a grommet 1½" in diameter for power cords to allow for charging when the laptop is secured. Cell phone and camera storage holders included. Features side vent holes for ventilation. Space in bottom for a power strip. Shipped UPS. Shipping weight is 20lbs.

WLAP2016*	20¾"W X 5¼"D X 19½"H
-----------	----------------------

* Ships UPS

F.O.B. Illinois only.

B. Mobile Laptop Security Cabinet

Welded steel construction. Cabinets are 18 gauge steel for the sides and 22 gauge for the shelves. Wire management in lower portion of cabinet. Wire management space behind the shelves in the back of the cabinet is approximately 6½". Two cord exit holes in bottom rear of cabinet. Ventilation on sides of cabinet for air circulation. 2" backstop on three sides of top with non-slip rubber pad. Doors open a full 180° for easy access. Room for approximately 16 laptops on 36" shelves, and 24 laptops on 46" wide model. Four 5" casters – 2 locking. Powder coat finish. Rear door access.

MLS5236-00	36"W X 24"D X 52"H
MLS5248-00	46"W X 24"D X 52"H

F.O.B. Pennsylvania only.

C. Optional Electronic Power Charge System

Has a power management module containing 4 timed outlets. Charging module is furnished with a 10' cord. Provides power in alternating segments of 15 minutes. Has an easily accessible "always on" duplex on back with an on / reset switch. Unit has 2 surge protectors, each with outlets for 16 laptop charging units. Each surge protector is individually fused for maximum protection. Includes vertical mount outlet power strip and 7" PDU with circuit protection and electronic switch for power management.

MLS5236-00EC	36"W X 24"D X 52"H
MLS5248-00EC	46"W X 24"D X 52"H

D. Wide Body TV Monitor Cart

E. Wide Body Flat Panel TV Cart

Wider base for greater stability and also accommodates larger equipment. Top two shelves have grommet holes for cord management. Heavy-duty 16-gauge steel construction. Black powder coat finish. Universal mounting system works with standard flat panel televisions. Monitor can be adjusted to reduce glare and provide best viewing angle. Middle shelf ideal for use with DVD and speakers. 5" industrial grade swivel casters – two with locking brake. 250 lb capacity. Shipped unassembled.

IP30322744-09 (FLAT PANEL)*	32"W X 27½"D X 44"H
IP30403244-09 (FLAT PANEL)**	40"W X 32½"D X 44"H

* Holds up to 37" Flat Panel TV

** Holds up to 52" Flat Panel TV

IF30322744-09 (TV MONITOR)*	32"W X 27½"D X 44"H
IF30403244-09 (TV MONITOR)**	40"W X 32½"D X 44"H

* Holds up to 27" TV

** Holds up to 40" TV

F.O.B. Illinois - wide body carts only.



CLOSED

A



B

Cabinet shown with optional electronic power charge system.



C



D



E

Options



ES32-09

ES40-09



PSC4-09

CARTS & STANDS



Mobile Utility Cabinet with fixed shelf

Convenient desk height, durable light gray laminate top, full recessed door pull, push button locking handle secures both doors, two storage areas, four casters – two locking, Dove Gray powder coat finish. Shipped assembled except casters.

RF1F301826-05D

30"W X 18"D X 30"H*

* Height includes casters.



Refreshment Center Machine Stand

Concealed 16½"D full suspension drawer. Roll-out drawer is 16½"D x 24"W x 2½"H. Full recessed door pull. Two shelf spaces. Medium gray laminate top. Cabinet case is 30"W x 18"D. Dove Gray powder coat finish. Shipped assembled.

CFDP301833-05D

30"W X 18"D X 34"H



02 05 07 09

PLASTIC UTILITY CARTS



Plastic Utility Cart

Heavy-duty plastic construction resists rust, dents, chips and is virtually maintenance free. Ideal for all types of material handling applications in factories, hospitals, institutions, office and work shops. 3" deep shelves to keep items retained during transit. Rounded corners for safety. Sturdy and stable yet lightweight for easy maneuverability. Push handle with molded-in storage tray to store small parts. 550lbs. load capacity. Four casters included (2 swivel, 2 rigid).

PUC174033-2	40"W X 17"D X 33"H	2 SHELVES	550 LB. CAPACITY
PUC254635-2	46"W X 25"D X 33"H	2 SHELVES	550 LB. CAPACITY
PUC174033-3	40"W X 17"D X 33"H	3 SHELVES	550 LB. CAPACITY
PUC254635-3	46"W X 25"D X 33"H	3 SHELVES	550 LB. CAPACITY

F.O.B. Illinois only.

COMPUTER SECURITY CABINETS

22 gauge steel construction. Solutions for better wire management. Monitor viewable through 16"W x 15½"H acrylic window. Fully welded, shipped assembled (except casters where applicable). Durable powder coat finish. Also accommodates traditional monitors.

A. Mobile Computer Security Workstation with Slide-Out Shelf and Work Surface

Convenient slope work surface, side shelf. 2" grommets in the bottom, sides and top for easy wire management. Bottom unit has 6" wire way with rear door access. All doors and flip-down drawer lock. 12½"W x 18½"D side mounting posting shelf which can be accessed from left or right. Lower compartment has an extendable printer shelf which adjusts on 3" center 20"W x 16½"D. Lower compartment has a flip-down drawer front and extendable keyboard drawer 20"W x 16½"D. Upper compartment has a vented back and accommodates most 24" flat screen monitors, interior size is 25½"W x 10½"D x 19½"H. Upper compartment has a locking clear view door with an acrylic window. The size is 14¾"W x 16¼"H, upper section door opening is 21¾"W x 16½"H. This unit has a 21¾"W x 3"H storage section between the upper and lower sections. This unit has a 26"W x 12"D, 10" sloped work surface.

JG6625	26"W X 24"D X 63"H
--------	--------------------

F.O.B. Pennsylvania only.



B. Mobile Computer Security Workstation

2" grommet in bottom shelf for easy wire management. Monitor shelf wire way in back of shelf for easy access of wiring between upper and lower portions of cabinet. 4 heavy-duty 5" casters, 2 locking. Cabinet supports 150 lbs. Keyboard shelf 20" x 15½" x 2". Upper locking compartment interior is 25½" x 22¾" x 23¾". Window with separate cam lock for security. Lower locking compartment with 1 adjustable shelf, adjusts on 1" centers is 21" x 23" x 24½". Flat panel kit included. Optional fan.

JG2663	26"W X 24"D X 63"H
--------	--------------------

F.O.B. Pennsylvania only.



C. Mobile Computer Cabinet for Extreme Environments

Extra heavy-duty 16 gauge

Door seals and air-intakes for fan filter out dirt and dust preventing it from entering system. All welded. Completely secured. Piano hinges on all doors. 25½"W x 30"D x 21½"H monitor section. 44½" work height. 24½"W x 24½"D slide out keyboard tray. 25½"W x 30"D x 33½"H lower cabinet with adjustable pull-out printer shelf. Four 5" casters, 2 locking. Powder coat finish.

16CC303064-00	30"W X 30"D X 70"H
---------------	--------------------

F.O.B. Tennessee and Pennsylvania only.



Options Available



Power Strip
PS-8



Fan
UF12A

Features



Flip Down Locking Drawer Front



Flat Panel Kit

02 05 07 09

LATERAL FILES



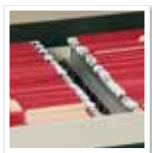
A



B



C



Cross Bar Kit
Four Rails Per Set LA99000
E2500L FOR 400 SERIES
(Optional)



File Drawer Divider Kit
LFDIVKT-10
(Optional)

A. 400 Series Lateral File Cabinets

E202L	2 DRAWER	30"W X 18"D X 26 3/8"H
E204L	4 DRAWER	30"W X 18"D X 50 3/8"H

30" wide 80 lb. drawer capacity

F.O.B. California and Pennsylvania only.

B. 600 Series Lateral File Cabinets

LF6A362-00	2 DRAWER	36"W X 19 1/4"D X 28 3/8"H
LF6A363-00	3 DRAWER	36"W X 19 1/4"D X 40 3/8"H
LF6A423-00	3 DRAWER	42"W X 19 1/4"D X 40 3/8"H
LF6A364-00	4 DRAWER	36"W X 19 1/4"D X 53 1/4"H
LF6A424-00	4 DRAWER	42"W X 19 1/4"D X 53 1/4"H
LF6A365-00	5 DRAWER*	36"W X 19 1/4"D X 66 3/8"H
LF6A425-00	5 DRAWER*	42"W X 19 1/4"D X 66 3/8"H

36" wide 100 lb. drawer capacity

F.O.B. California and Pennsylvania only.

42" wide 120 lb. drawer capacity

*5 drawer has posting shelf, flip front top drawer.

C. 800 Series Full Pull Lateral Files

LF8F302-00	2 DRAWER	30"W X 19 1/4"D X 28 3/8"H
LF8F304-00	4 DRAWER	30"W X 19 1/4"D X 53 1/4"H
LF8F362-00	2 DRAWER	36"W X 19 1/4"D X 28 3/8"H
LF8F364-00	4 DRAWER	36"W X 19 1/4"D X 53 1/4"H
LF8F422-00	2 DRAWER	42"W X 19 1/4"D X 28 3/8"H
LF8F424-00	4 DRAWER	42"W X 19 1/4"D X 53 1/4"H
LF8F425-00	5 DRAWER*	42"W X 19 1/4"D X 66 3/8"H

36" wide 100 lb. drawer capacity

F.O.B. California and Pennsylvania only.

42" wide 120 lb. drawer capacity

*5 drawer has posting shelf, flip front top drawer.

800 Series

600 Series

400 Series

Full drawer extension on genuine progressive telescoping ball-bearing slides provide smooth, trouble-free operation.	■	■	■
Built-in drawer interlock system prevents more than one drawer from opening at a time, reducing the chance of cabinet tip over.	■	■	■
Single lock system secures all drawers with one key (two keys included).	■		
Center lock securely locks both sides of each drawer for positive security (two keys provided).		■	■
Adjustable leg levelers keep cabinets level in any environment.	■	■	■
Extra deep drawer accommodates letter or legal size files using side to side hanging rails.	■	■	■
Cross Bar Kits available for front-to-back filing.	■	■	■
File Drawer Divider Kits.		■	■
Powder coat finish.	■	■	■
Aluminum handles with steel reinforced drawer fronts.		■	
Plastic handle insert.	■		
Rolled or hemmed edge drawer sides for strength, rigidity & safety.	■	■	■
ANSI/BIFMA Rated. 36"W @ 88 lbs. 42"W @ 113 lbs.		■	■
All steel full width drawer pulls featuring double wall reinforced drawer fronts for extra stability.			■
Core removeable locks.		■	■
Available in all colors.	■	■	■



VERTICAL FILES



Vertical Files

These durable welded steel vertical file cabinets are the cost-effective way to keep files organized and secure using minimal floor space. Steel ball bearing slide suspension for superior performance. Full drawer extension for easy file retrieval. High-sided drawers accommodate hanging folders. Spring loaded follower in drawers keeps files upright. Label holder for easy identification. Aluminum thumb latch and handles. Single lock secures all drawers, 2 keys included. Powder coat finish.

VFLT222-00	2-DRAWER LETTER SIZE	15"W X 22"D X 26¼"H
VFLT224-00	4-DRAWER LETTER SIZE	15"W X 22"D X 48¾"H
VFLT252-00	2-DRAWER LETTER SIZE	15"W X 25"D X 29"H
VFLT254-00	4-DRAWER LETTER SIZE	15"W X 25"D X 52"H
VFLT262-00	2-DRAWER LETTER SIZE	15"W X 26½"D X 29"H
VFLG262-00	2-DRAWER LEGAL SIZE	18¼"W X 26½"D X 29"H
VFLT264-00	4-DRAWER LETTER SIZE	15"W X 26½"D X 52"H
VFLG264-00	4-DRAWER LEGAL SIZE	18¼"W X 26½"D X 52"H
VFLT265-00	5-DRAWER LETTER SIZE	15"W X 26½"D X 60"H

F.O.B. Illinois only.



HIGH-SIDED DRAWERS ACCOMMODATE HANGING FILES



SPRING LOADED FOLLOWER BLOCK

STEEL DESKS

Durable woodgrain laminate top. Powder coat finish. Features aluminum drawer handles and chrome-plated 1" square tubular steel legs with adjustable leg levelers. Center locking system for all drawers. Minimal assembly, just attach legs.



Grey Nebula



Medium Oak



Walnut

500 Series Single-Pedestal Desk

Full extension locking file drawer accommodates hanging file folders. Box drawer is equipped with dividers. Center drawer with supply tray.

30078-PO	PUTTY BASE/OAK TOP	45"W X 24"D X 29½"H
30078-BW	BLACK BASE/WALNUT TOP	45"W X 24"D X 29½"H
30078-GY	GRAY BASE/GRAY TOP	45"W X 24"D X 29½"H

F.O.B. California, Pennsylvania and Tennessee only.



Grey Nebula



Medium Oak



Walnut

500 Series Double-Pedestal Desk

Full extension locking file drawers accommodate hanging file folders. Box drawers are equipped with dividers. Center drawer with supply tray.

30045-PO	PUTTY BASE/OAK TOP	60"W X 30"D X 29½"H
30045-BW	BLACK BASE/WALNUT TOP	60"W X 30"D X 29½"H
30045-GY	GRAY BASE/GRAY TOP	60"W X 30"D X 29½"H
30084-PO	PUTTY BASE/OAK TOP	72"W X 36"D X 29½"H
30084-BW	BLACK BASE/WALNUT TOP	72"W X 36"D X 29½"H
30084-GY	GRAY BASE/GRAY TOP	72"W X 36"D X 29½"H

F.O.B. California, Pennsylvania and Tennessee only.



STEEL DESKS

600 Series Steel Teachers Desk

Features laminated wood top surface with rounded corners and vinyl covered t-mold edges for comfort and safety. Desk top features a 6" rear overhang for easy student conferencing. Two grommets for easy cable and wire management. Central locking system locks all drawers. Chrome-plated 1" square tubular steel legs with leveling glides. Heavy-duty steel frame with powder coat finish. Full extension file drawer with steel ball-bearing slide suspension. File drawer is high-sided to accept hanging folders. Box drawer includes divider. Drawer handles with arch design. Includes pull-out center drawer for small supplies.

	TOP SIZE	PEDESTALS	BASE COLOR	TOP COLOR
SQ4830B0	48" X 30"	SINGLE	BLACK	MEDIUM OAK
SQ4830BM	48" X 30"	SINGLE	BLACK	MAPLE
SQ4830P0	48" X 30"	SINGLE	PUTTY	MEDIUM OAK
SQ4830BGN	48" X 30"	SINGLE	BLACK	GREY NEBULA
SQ4830BW	48" X 30"	SINGLE	BLACK	WALNUT
SQ6030B0	60" X 30"	SINGLE	BLACK	MEDIUM OAK
SQ6030BM	60" X 30"	SINGLE	BLACK	MAPLE
SQ6030P0	60" X 30"	SINGLE	PUTTY	MEDIUM OAK
SQ6030BGN	60" X 30"	SINGLE	BLACK	GREY NEBULA
DQ6030B0	60" X 30"	DOUBLE	BLACK	MEDIUM OAK
DQ6030BM	60" X 30"	DOUBLE	BLACK	MAPLE
DQ6030P0	60" X 30"	DOUBLE	PUTTY	MEDIUM OAK
DQ6030BGN	60" X 30"	DOUBLE	BLACK	GREY NEBULA
DQ6030BW	60" X 30"	DOUBLE	BLACK	WALNUT



Grey Nebula



Mahogany



Maple



Walnut



Medium Oak



Smooth rounded corner tops



F.O.B. California, Pennsylvania and Tennessee

700 & 900 Series Heavy-Duty Teachers Desk

Features a full width center drawer with an upgraded central locking system, one key locks all drawers. Telescoping heavy-duty ball bearing slide suspensions on all drawers for easy opening and closing. Full width recessed pull handles. Scratch, stain and moisture resistant wood grain laminated top with rounded corners and vinyl covered t-mold edges for comfort and safety. Desk top features a 6" overhang for easy student conferencing. Reinforced, double-wall steel end panels with modesty panel create a strong solid frame. Cord management grommets on top of the desk. Includes adjustable leveling guides. ANSI/BIFMA and Greenguard Certified.



Grey Nebula



Mahogany



Maple



Walnut



Medium Oak



700 SERIES

	TOP SIZE	BASE COLOR	TOP COLOR
SP704830BM	48" X 30"	BLACK	MAPLE
SP704830BGN	48" X 30"	BLACK	GREY NEBULA
SP704830B0	48" X 30"	BLACK	MEDIUM OAK
SP704830P0	48" X 30"	PUTTY	MEDIUM OAK
SP704830BW	48" X 30"	BLACK	WALNUT
SP704830CMH	48" X 30"	CHARCOAL	MAHOGANY
DP706030BM	60" X 30"	BLACK	MAPLE
DP706030BGN	60" X 30"	BLACK	GREY NEBULA
DP706030B0	60" X 30"	BLACK	MEDIUM OAK
DP706030P0	60" X 30"	PUTTY	MEDIUM OAK
DP706030CMH	60" X 30"	CHARCOAL	MAHOGANY
DP706030BW	60" X 30"	BLACK	WALNUT

900 SERIES

	TOP SIZE	BASE COLOR	TOP COLOR
SP904830BM	48" X 30"	BLACK	MAPLE
SP904830BGN	48" X 30"	BLACK	GREY NEBULA
SP904830B0	48" X 30"	BLACK	MEDIUM OAK
SP904830P0	48" X 30"	PUTTY	MEDIUM OAK
SP904830BW	48" X 30"	BLACK	WALNUT
SP904830CMH	48" X 30"	CHARCOAL	MAHOGANY
DP906030BM	60" X 30"	BLACK	MAPLE
DP906030BGN	60" X 30"	BLACK	GREY NEBULA
DP906030B0	60" X 30"	BLACK	MEDIUM OAK
DP906030P0	60" X 30"	PUTTY	MEDIUM OAK
DP906030CMH	60" X 30"	CHARCOAL	MAHOGANY
DP906030BW	60" X 30"	BLACK	WALNUT

F.O.B. California, Pennsylvania and Tennessee only.

WWW.SANDUSKYLEE.COM

STEEL DESKS

27

WALL CABINETS



Clear View Wall Cabinet

Durable acrylic doors provide full visibility of contents. Fully adjustable shelf on 2" centers plus raised bottom shelf. Three point door locking system. Single door has a cam lock to the side. Meets ANSI/BIFMA shelf standards. Shipped assembled (*).

WA1V 161226-00*	16"W X 12"D X 26"H
WA1V 301226-00	30"W X 12"D X 26"H
WA2V 361230-00	36"W X 12"D X 30"H**

* Single door design

F.O.B. California, Pennsylvania and Tennessee.

** 36"W has two shelves and two handles

♦ Handle requires some assembly.



Solid Door Wall Cabinet

Fully adjustable shelf on 2" centers plus raised bottom shelf. Three point door locking system. Single door has a cam lock to the side. Meets ANSI/BIFMA shelf standards. Shipped assembled (*).

WA11 181226-00*	18"W X 12"D X 26"H
WA11 301230-00	30"W X 12"D X 30"H
WA22 361230-00	36"W X 12"D X 30"H**

* Single door design

F.O.B. California, Pennsylvania and Tennessee.

** 36"W has two shelves and two handles

♦ Handle requires some assembly.



Keyless Electronic Wall Cabinet

Boltless ready-to-assemble wall cabinet snaps together without the use of any tools. Two-point locking system. One shelf adjusts in 2" increments. The keyless electronic coded locking handle is available with two passwords, and keeps a record of the day, date, and time of when the cabinet is accessed. An exterior battery pack can be plugged into the keypad and also a key that is accessible on the keypad. Available in black, putty and dove gray. Specify color.

KDEW3012	30"W X 12"D X 30"H
----------	--------------------

F.O.B. Illinois only.



FLAT FILE / HANGING FILES



5- and 10-Drawer Flat File

Steel flat file is ideal for both work-in-progress and archival storage. The 5-drawer and 10-drawer models provide a reliable place to store flat all your valuable documents and graphics. All flat files are modular — they can be used individually or in a space-saving stack. If your filing needs grow, simply add another flat file cabinet. Museum/archival quality paint finish ensures that there is no out-gassing and that the atmosphere in the flat files has no acidity or alkalinity (pH) created by the finish.

5-Drawer Flat Files: Versatile file stores up to 500 sheets per unit active filing, 750 sheets of semi-active or 1,000 sheets of inactive material. Five large capacity 1 $\frac{1}{8}$ " deep drawers in the three cabinet sizes.

10-Drawer Flat Files: Ideal for high traffic project storage areas. Ten 1 $\frac{1}{8}$ " deep drawers allow the easy retrieval or materials can be stacked with 5-drawer flat file cabinets for customized high volume storage.

A. 5-Drawer Flat File

with open base

B. Two 5-Drawer Flat Files

stacked on closed base

C. 10-Drawer Flat File

with open base

244876	5-DRAWER FLAT FILE	40 $\frac{3}{4}$ "W X 28 $\frac{3}{8}$ "D X 16 $\frac{1}{8}$ "H*
244877	CLOSED BASE	40 $\frac{3}{4}$ "W X 28 $\frac{3}{8}$ "D X 4"H
244878	OPEN BASE	40 $\frac{3}{4}$ "W X 28 $\frac{3}{8}$ "D X 20"H

*Inside Drawer: 37 $\frac{1}{16}$ "W X 25 $\frac{7}{16}$ "D X 1 $\frac{1}{8}$ "H

244879	5-DRAWER FLAT FILE	46 $\frac{3}{4}$ "W X 35 $\frac{3}{8}$ "D X 16 $\frac{1}{8}$ "H**
244880	CLOSED BASE	46 $\frac{3}{4}$ "W X 35 $\frac{3}{8}$ "D X 4"H
244881	OPEN BASE	46 $\frac{3}{4}$ "W X 35 $\frac{3}{8}$ "D X 20"H

** Inside Drawer: 43 $\frac{3}{8}$ "W X 32 $\frac{3}{8}$ "D X 1 $\frac{1}{8}$ "H

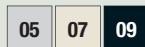
244882	5-DRAWER FLAT FILE	53 $\frac{3}{4}$ "W X 41 $\frac{1}{16}$ "D X 16 $\frac{1}{8}$ "H***
244883	CLOSED BASE	55 $\frac{3}{4}$ "W X 41 $\frac{1}{8}$ "D X 4"H
244884	OPEN BASE	55 $\frac{3}{4}$ "W X 41 $\frac{1}{8}$ "D X 20"H

*** Inside Drawer: 50 $\frac{3}{8}$ "W X 38 $\frac{1}{16}$ "D X 1 $\frac{1}{8}$ "H

244885	10-DRAWER FLAT FILE	46 $\frac{3}{4}$ "W X 35 $\frac{3}{8}$ "D X 16 $\frac{1}{8}$ "H****
244880	CLOSED BASE	46 $\frac{3}{4}$ "W X 35 $\frac{3}{8}$ "D X 4"H
244881	OPEN BASE	46 $\frac{3}{4}$ "W X 35 $\frac{3}{8}$ "D X 20"H

****Inside Drawer: 43 $\frac{3}{8}$ "W X 32 $\frac{3}{8}$ "D X $\frac{7}{8}$ "H

F.O.B. Illinois and Pennsylvania.



A. Mobile Wire

Sturdy heavy gauge steel rod with plastic coating. Grandstand design allows easy access to the same length rolls. 4 swivel casters easily roll your files to the point of use. Quick and easy assembly.

RFS3121	31 $\frac{1}{2}$ "W X 13 $\frac{3}{4}$ "D X 20 $\frac{3}{8}$ "H
---------	---

B. Pivot Mobile Stand

Four swivel casters with two locking. Frame adjusts to accommodate 1200 sheets. Includes 12 pivot brackets to hold clamps.

S5026	27 $\frac{1}{2}$ " - 37 $\frac{1}{2}$ " W X 27"D X 45 $\frac{1}{4}$ " - 61 $\frac{1}{2}$ "H
-------	---

C. Pivot Wall Rack

Pivot wall rack can store up to 1200 sheets. Included mounting hardware and 12 pivot brackets.

S5016	15" W X 24"D X 9 $\frac{5}{8}$ "H
-------	-----------------------------------

D. Drop/Lift Mobile Plan

Four swivel casters with two locking. Holds up to 1800 sheets. Adjustable to fit 24" to 42" clamps.

S5060	25 $\frac{3}{4}$ " - 43 $\frac{3}{4}$ " W X 20 $\frac{1}{2}$ "D X 51"H
-------	--

E. Drop/Lift Wall Rack

Space efficient model extends less than 12" from the wall. Holds up to 1200 sheets. Includes mounting hardware.

S5030	11 $\frac{1}{16}$ " W X 8 $\frac{1}{16}$ "H
-------	---

F. Hanging Clamps

Aluminum Document Hanging Clamps securely hold drawings in place for reference and storage. Adjustment knobs provide even gripping tension. Sold in packs of 6.

S5001	19 $\frac{1}{2}$ "W X 2 $\frac{1}{2}$ "D X $\frac{3}{4}$ "H
S5002	25 $\frac{1}{4}$ "W X 2 $\frac{1}{2}$ "D X $\frac{3}{4}$ "H
S5003	30 $\frac{3}{4}$ "W X 2 $\frac{1}{2}$ "D X $\frac{3}{4}$ "H
S5004	36 $\frac{1}{8}$ "W X 2 $\frac{1}{2}$ "D X $\frac{3}{4}$ "H
S5005	42 $\frac{1}{8}$ "W X 2 $\frac{1}{2}$ "D X $\frac{3}{4}$ "H

F.O.B. Illinois only.

SAFETY CABINETS



A



B

A. Compact Flammable Safety Cabinet with Single Door - Manual Close

Construction meets NFPA Code 30 and OSHA Standard 1910.106 for storage of Class I, II and III liquids. Fits conveniently under countertops, fume hoods, windows or other compact areas. Cabinets include one 500 lb. capacity galvanized shelf adjustable on 2½" centers.

SC12F	GAL. CAPACITY 12	23"W X 18"D X 35"H
-------	------------------	--------------------

B. Compact Flammable Safety Cabinet with Double Door - Manual Close

Construction meets NFPA Code 30 and OSHA Standard 1910.106 for storage of Class I, II and III liquids. Fits conveniently under countertops, fume hoods, windows or other compact areas. Cabinets include one 500 lb. capacity galvanized shelf adjustable on 2½" centers.

SC22F	GAL. CAPACITY 22	35"W X 22"D X 35"H
-------	------------------	--------------------



C



D

C. Flammable Safety Cabinet

Standard 2-door manual close design. Double wall 18 gauge welded steel construction with 1½" air space. Dual 2" capped vents with flash arrestors for external exhaust. 2" high leakproof door sill contains spills. Adjustable leveling feet. Locking handle with 3-point latch. Cabinet includes two 500 lb. capacity galvanized shelves, adjustable on 2½" centers. Construction meets NFPA Code 30 and OSHA Standard 1910.106 for storage of Class I, II and III liquids. Factory Mutual Approved.

SC450F	GAL. CAPACITY 45	43"W X 18"D X 65"H
SC600F	GAL. CAPACITY 60	34"W X 34"D X 65"H

D. Counter Height Flammable Safety Cabinet

Same features as Flammable Safety Cabinet except it has one adjustable shelf.

SC300F	GAL. CAPACITY 30	43"W X 18"D X 44"H
--------	------------------	--------------------



E



F

E. Paint & Ink Storage Cabinet

Double wall 18 gauge welded steel construction with 1½" air space. Dual 2" capped vents with flash arrestors for external exhaust. 2" high leakproof door sill contains spills. Adjustable leveling feet. Locking handle with 3-point latch. Cabinet includes five 500 lb. capacity galvanized shelves, adjustable on 2½" centers. Construction meets NFPA Code 30 and OSHA Standard 1910.106 for storage of Class I, II and III liquids.

PC60	GAL. CAPACITY 60	43"W X 18"D X 65"H
------	------------------	--------------------

F. Counter Height Paint & Ink Storage Cabinet

Same features as Paint & Ink Storage Cabinet except it has three adjustable shelves.

PC40	GAL. CAPACITY 40	43"W X 18"D X 44"H
------	------------------	--------------------

All products on this page are F.O.B. Illinois and Pennsylvania only.

ACTIVITY TABLES & WORKSTATION / DOLLIES / PALLET JACK

A. Activity / Utility Tables

Rounded corner laminate tops 1¼" thick. 3", 18-gauge steel aprons. Powder coat finish. 1¼" chrome-plated tubular square legs adjust at 1" increments from 24" - 36" height. Adjustable floor glides.

AT4020-BW	BLACK WITH WALNUT TOP	40"W X 20"D X 29"H
AT4020-PU	PUTTY WITH OAK TOP	40"W X 20"D X 29"H
AT6020-BW	BLACK WITH WALNUT TOP	60"W X 20"D X 29"H
AT6020-PU	PUTTY WITH OAK TOP	60"W X 20"D X 29"H
AT6030-BW	BLACK WITH WALNUT TOP	60"W X 30"D X 29"H
AT6030-PU	PUTTY WITH OAK TOP	60"W X 30"D X 29"H
AT7236-BW	BLACK WITH WALNUT TOP	72"W X 36"D X 29"H
AT7236-PU	PUTTY WITH OAK TOP	72"W X 36"D X 29"H

F.O.B. Illinois only.

B. Workstation with Silver Tube Frame

Wood Grain laminated top is radiused to eliminate sharp edges. Sturdy steel tubular frame construction. Front legs have adjustable leveling glides for uneven floors. Powder coated for durability. Easy to assemble.

6426-3	47¼"W X 23½"D X 29½"H
--------	-----------------------

F.O.B. Illinois only.

C. Cabinet Dolly

Heavy-duty, welded steel with four 3" swivel casters, two with brakes. Weight capacity 1000 lbs. Accommodates 36"W x 18"D or 36"W x 24"D (or smaller) cabinets. Fits Valueline, Classic Plus and Elite Models. (*) Putty finish only.

DOIO 361800-07 PY	36"W X 18"D CABINETS
DOIO 361800-05 GY	36"W X 18"D CABINETS
DOIO 362400-07 PY*	36"W X 24"D CABINETS

D. Chair Dolly

Supports 280 pounds, has four 2" swivel casters. Finished in Black.

DOIO 2323CH-09	22½"W X 22½"D X ¾"H
----------------	---------------------

F.O.B. Pennsylvania only.

E. Industrial Pallet Jack

Fingertip lever controls include raise, lower, and neutral operations. 5500lb. capacity. All welded steel with reinforced 48" fork. Tapered ends and dual entry rollers on the forks ensure accurate and smooth entry into pallets.

PT5027	27"W X 50½"D X 37"H	5500 LB. CAPACITY
--------	---------------------	-------------------

F.O.B. Illinois only.

A



B



C



D



E



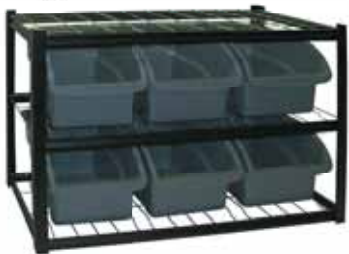
BIN STORAGE



Bin Shelving

36 gray plastic bins in four sizes. Bins have space for labels. Black powder coat steel frame. Wire shelves with rails to keep bins in place. Top laminate shelf for extra storage space. Easy to assemble. Twelve small plastic bins, 5.9"W X 15.4"D X 3.5"H. Ten medium plastic bins, 7.5"W X 15.4"D X 6.6"H. Eight large plastic bins, 10"W X 15.4"D X 6.6"H. Six extra-large plastic bins, 12.4"W X 15.4"D X 6.6"H.

UR4416BIN36	44"W X 16"D X 57"H
-------------	--------------------



Bin Shelving

6 extra large gray plastic bins. Black powder coat steel frame. Wire shelves with rails to keep bins in place. Top wire shelf for extra storage space. Easy to assemble. Six plastic bins, 12.25"W X 14.5"D X 12.25"H.

IBU421633	42"W X 16"D X 33"H
-----------	--------------------



Mobile Bin Shelving

15 black plastic bins in three sizes. Wire shelves with rails to keep bins in place. Top wire shelf has plastic liner. Heavy-duty swivel casters, two locking. Chrome finish. Five small plastic bins, 5.5"W X 15.25"D X 3.25"H. Four medium plastic bins, 7.5"W X 15.25"D X 6.25"H. Six large plastic bins, 10"W X 15.25"D X 6.25"H.

MBU3317BIN15	33"W X 16½"D X 38"H
--------------	---------------------

PLASTIC SHELVING



Plastic Shelving

Durable, ventilated resin shelving will never rust, dent or peel and is chemical resistant. Suitable for indoor and outdoor use. Easy to assemble in minutes – no tools required. Color black.

PS361856-4B	36"W X 18"D X 56"H	4 SHELVES	150 LB. SHELF CAPACITY
PS361872-5B	36"W X 18"D X 72"H	5 SHELVES	150 LB. SHELF CAPACITY
PS362472-5B	36"W X 24"D X 72"H	5 SHELVES	200 LB. SHELF CAPACITY

All products on this page are F.O.B. Illinois only.

CHROME WIRE SHELVING

A. Heavy-Duty Chrome Wire Shelving

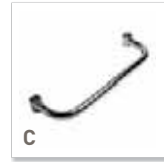
Shelves have 600-800 lb. capacity, based on evenly distributed loads. The four shelves are fully adjustable in 1" increments. Easy to assemble with no tools required. Contemporary design with chrome finish. NSF Certified. Accessories Available.

W" X D"	74"H	86"H	SHELF CAPACITY
36"W X 18"D	WS361874-C	WS361886-C	800 LB. SHELF CAPACITY
36"W X 24"D	WS362474-C	WS362486-C	800 LB. SHELF CAPACITY
48"W X 12"D	WS481274-C	WS481286-C	800 LB. SHELF CAPACITY
48"W X 18"D	WS481874-C	WS481886-C	800 LB. SHELF CAPACITY
48"W X 24"D	WS482474-C	WS482486-C	800 LB. SHELF CAPACITY
60"W X 18"D	WS601874-C	WS601886-C	800 LB. SHELF CAPACITY
60"W X 36"D	WS603674-C	WS603686-C	800 LB. SHELF CAPACITY
72"W X 12"D	WS721274-C	WS721286-C	800 LB. SHELF CAPACITY
72"W X 18"D	WS721874-C	WS721886-C	800 LB. SHELF CAPACITY
72"W X 24"D	WS722474-C	WS722486-C	800 LB. SHELF CAPACITY
72"W X 36"D	WS723674-C	WS723686-C	800 LB. SHELF CAPACITY



Accessories (A. Only)

B.	WSCASTER4	4" RUBBER CASTERS WITH BRAKE (SET OF 4)	660 LBS. OVERALL WEIGHT CAPACITY
B.	WSCASTER5	5" RUBBER CASTERS WITH BRAKE (SET OF 4)	1000 LBS. OVERALL WEIGHT CAPACITY
C.	WSPHANDLE18	18"D PUSH HANDLE	
C.	WSPHANDLE24	24"D PUSH HANDLE	
D.	WSSHOKK	S-HOOK TO ATTACH ADJACENT UNITS AT SHELF	
E.	WSPSTCLAMP	POST CLAMP TO JOIN 2 UNITS AT POST	



Adding casters reduces overall weight capacity. See overall weight capacity for each caster size.

F. Light-Duty Chrome Wire Shelving

Shelves have 85-100 lb. capacity, based on evenly distributed loads. Shelves are fully adjustable in 1" increments. Easy to assemble with no tools required. NSF Certified.

WS121212-C	12"W X 12"D X 12"H	2 SHELVES	85 LB. SHELF CAPACITY	CHROME
WS241430	24"W X 14"D X 30"H	3 SHELVES	100 LB. SHELF CAPACITY	CHROME
WS201232-C	20"W X 12"D X 32"H	4 SHELVES	85 LB. SHELF CAPACITY	CHROME
WS201232-B	20"W X 12"D X 32"H	4 SHELVES	85 LB. SHELF CAPACITY	BLACK



G. Mobile Chrome Wire Shelving

Shelves have 110-600 lb. capacity, based on evenly distributed loads. Shelves are fully adjustable in 1" increments. Easy to assemble. Four casters (with brakes) for easy mobility. NSF Certified. Model EZGR4818-RW3 has three garment bars, two full shelves, two half shelves and six casters.

MWS221333	22"W X 13"D X 33"H	3 SHELVES	250 LB. SHELF CAPACITY	CHROME	2" NYLON CASTERS
MWS301460	30"W X 14"D X 60"H	5 SHELVES	200 LB. SHELF CAPACITY	SILVER	2" NYLON CASTERS
MWS361454	36"W X 14"D X 54"H	4 SHELVES	250 LB. SHELF CAPACITY	BLACK	2" NYLON CASTERS
MWS361872	36"W X 18"D X 72"H	5 SHELVES	500 LB. SHELF CAPACITY	CHROME	3" RUBBER CASTERS
MWS481872	48"W X 18"D X 72"H	4 SHELVES	250 LB. SHELF CAPACITY	BLACK	2" NYLON CASTERS
MWS481874-B	48"W X 18"D X 74"H	6 SHELVES	600 LB. SHELF CAPACITY 200 LB. WITH CASTERS	BLACK	3" RUBBER CASTERS
EZGR4818-RW3	48"W X 18"D X 74"H	4 SHELVES	110 LB. SHELF CAPACITY	CHROME	3" RUBBER CASTERS



Mobile Chrome Wire Carts

Shelves have 110-800 lb. capacity, based on evenly distributed loads. Shelves are fully adjustable in 1" increments. Easy to assemble. Four casters (with brakes) for easy mobility. NSF Certified.

H.	MWS361838	36"W X 18"D X 38"H	3 SHELVES	800 LB. SHELF CAPACITY	CHROME	4" RUBBER CASTERS
H.	MWS362438	36"W X 24"D X 38"H	3 SHELVES	600 LB. SHELF CAPACITY	CHROME	4" RUBBER CASTERS
H.	MWS482438	48"W X 24"D X 38"H	3 SHELVES	600 LB. SHELF CAPACITY	CHROME	4" RUBBER CASTERS
I.	MKT241434	24"W X 14"D X 34"H	3 SHELVES WITH LINERS	110 LB. SHELF CAPACITY	BLACK	1½" NYLON CASTERS
J.	MKTSS241440	24"W X 14"D X 40"H	2 SHELVES WITH STAINLESS STEEL TOP	175 LB. SHELF CAPACITY	CHROME	2" RUBBER CASTERS
K.	MKTBB242036	24"W X 20"D X 36"H	2 SHELVES WITH BAMBOO TOP	175 LB. SHELF CAPACITY	CHROME	3" RUBBER CASTERS

F.O.B. Illinois only.

STEEL SHELVING



A. Treadplate Welded Rack

Four wire shelves provide ample storage. Shelves adjust in 3" increments to fit any storage needs. NSF certified. Heavy-duty steel construction for durability. Treadplate embossed beam design.



TP722472W4	77"W X 24"D X 72"H	2000 LB. SHELF CAPACITY
TP722472W3	77"W X 24"D X 72"H	2000 LB. SHELF CAPACITY



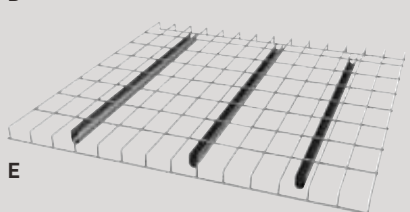
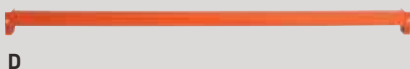
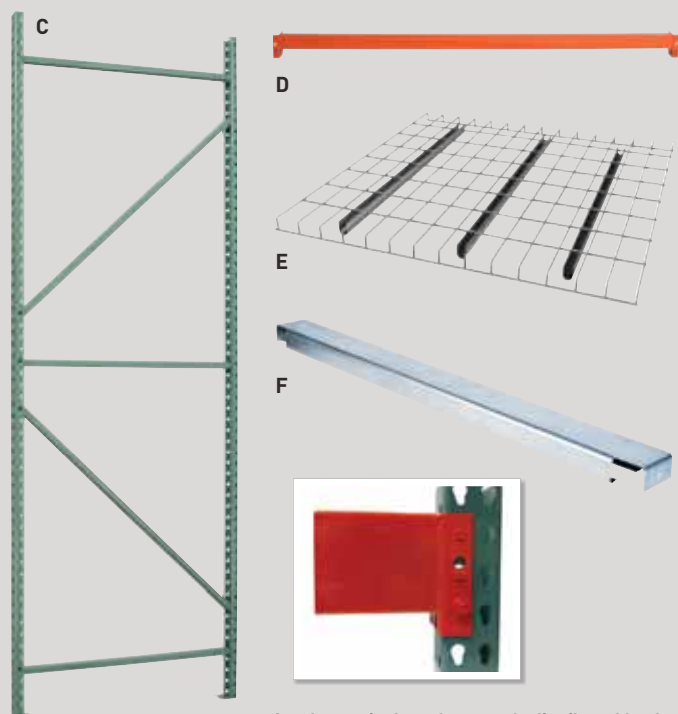
B. Welded Storage Rack

Industrial strength, heavy-duty welded steel frames and beams. Shelves adjust on 3" centers. Choose particle board shelving on 7224PRB that holds 1200 lbs. per shelf or heavy-duty coated wire deck shelving that holds 2000 lbs. per shelf.



7224PRB	77"W X 24"D X 72"H	3 SHELF, PARTICLE BOARD	BLACK
7224PRBWWD3	77"W X 24"D X 72"H	3 SHELF, NSF WIRE	BLACK
BW2472W4US	77"W X 24"D X 72"H	4 SHELF, NSF WIRE	SILVER
ERZ782478W-4	77"W X 24"D X 78"H	4 SHELF, NSF WIRE	BLACK
72BKW	72"W X 24"D X 2½"H	EXTRA LEVEL WIRE + 2 BEAMS	BLACK

PALLET RACK COMPONENTS



Load capacity based on evenly distributed loads.

C. Upright Frames

Heavy-duty 13 gauge welded roll formed steel construction. Features teardrop punch pattern every 2" for flexible beam adjustability. Horizontal and diagonal braces create a strong, stable system. Welded pre-punched footplates for easy anchoring. Durable powder coat finish in green.

RF207	42"D X 96"H	19,300 LB. LOAD CAPACITY
RF209	42"D X 120"H	19,300 LB. LOAD CAPACITY
RF211	42"D X 144"H	19,300 LB. LOAD CAPACITY

D. Beams

Heavy-duty 16 gauge roll formed welded steel. 1½" high step to accommodate cross bars and decking. Interlock stud and keyhole connection automatically locks into columns. Piston lock secures beam into place. No tools for installation. Durable finish in orange.

RB214	96"W X 2¾"H	4,120 LB. LOAD CAPACITY PER BEAM PAIR
RB215	108"W X 2¾"H	4,046 LB. LOAD CAPACITY PER BEAM PAIR
RB232	120"W X 2¾"H	4,368 LB. LOAD CAPACITY PER BEAM PAIR

E. Wire Decking

Heavy duty 5-gauge wire mesh allows visibility, air and sprinkler penetration for enhanced fire safety. Easy to install, the waterfall style decking wraps over the beam to provide a secure brace, eliminating movement between deck and beam. Includes three support channels. Powder coat finish.

RWD4246	46"W X 42"D	2,500 LB. LOAD CAPACITY
RWD4252	52"W X 42"D	2,500 LB. LOAD CAPACITY
RWD4258	58"W X 42"D	2,500 LB. LOAD CAPACITY

F. Pallet Rack Support Crossbars

Installs between two beams to assist in supporting pallet loads. 16 gauge steel with pre-galvanized finish.

RA221	42"D X 2"H
-------	------------

F.O.B. Illinois only.

STEEL SHELVING

Boltless Rivet Shelving

Industrial grade steel construction. Shelves hold up to 800 lbs. of evenly distributed loads and adjust in 1½" increments. Five durable particle board shelves. Easily assembles in minutes either vertically or horizontally. Gray powder coat finish.

CR3618	36"W X 18"D X 72"H	5 SHELF, PARTICLE BOARD
CR4824	48"W X 24"D X 72"H	5 SHELF, PARTICLE BOARD



Heavy-Duty Boltless Shelving

Industrial grade steel construction with concealed assembly post design. Patented 2-way beam design allows shelf to be assembled as a flat shelf, a full 4 sided tray or, as a combination of flat shelf with back and/or side stops. Includes five coated woodgrain shelves. Shelves hold up to 1,000 lbs. of evenly distributed loads and adjust in 1½" increments. Easily assembles in minutes either vertically or horizontally. Black carbide finish.

MR3618BWG	36"W X 18"D X 72"H	5 SHELF, COATED WOODGRAIN
MR4824BWG	48"W X 24"D X 72"H	5 SHELF, COATED WOODGRAIN



All products on this page are F.O.B. Illinois only.

WWW.SANDUSKYLEE.COM

STEEL SHELVING

35

WAGONS / SHOPPING CARTS



Flat Wagon

Heavy-duty steel mesh deck with 2" high side edges to keep items from rolling off. Heavy-duty pneumatic tires for easy rolling over any surface. Auto-type steering keeps front wheels under corners of steel frame to prevent tipping. Large D-handle for easy grip. Green powder coat finish. Requires some assembly.

FW3820	20"W X 38"L X 14¼"H	1,000 LB. CAPACITY	4" X 10" TIRES
FW6036*	36"W X 60"L X 17"H	800 LB. CAPACITY	5" X 13" TIRES

* Weight 127 lbs. / Ships LTL



Crate Wagon

Heavy-duty steel mesh deck with fold down sides for easy loading and unloading. Sides can also be removed if needed. Large straight pull handle for easy grip. Four heavy-duty pneumatic tires for easy rolling. Green powder coat finish. Requires some assembly.

CW3418	18"W X 34"L X 21¼"H (13½" H WITHOUT SIDES)	400 LB. CAPACITY	5" X 13" TIRES
CW4824	24"W X 48"L X 27¾"H (16¾" H WITHOUT SIDES)	1,000 LB. CAPACITY	5" X 13" TIRES
CW6031*	31"W X 60"L X 25"H	1,400 LB. CAPACITY	5" X 13" TIRES

* Weight 160 lbs. / Ships LTL



Light-Duty Folding Wagon

Conveniently folds for easy storage. Durable 600 denier polyester fabric. Strong solid steel frame and swivel handle for easy steering. Cover included.

FBW3622* BLUE	22"W X 36"L X 25½"H FOLDED SIZE: 8"W X 30"L X 23"H	150 LB. CAPACITY	1¼" X 8" TIRES
FCW3622* RED	22"W X 36"L X 25½"H FOLDED SIZE: 8"W X 30"L X 23"H	150 LB. CAPACITY	1¼" X 8" TIRES

* Weight 25 lbs. / Can ship UPS



Folding Shopping Cart

66-110 lbs. capacity. 4-wheels for easy maneuverability. Includes red non-woven liner, better for storing cargo. Durable red powder coated finish.

FSC3012	12¾"W X 11½"D X 37"H	66 LB. CAPACITY	WEIGHT 8 LBS.
FSC4021	21"W X 25"D X 40"H	110 LB. CAPACITY	WEIGHT 12 LBS.

Can ship UPS

All products on this page are F.O.B. Illinois only.

3-Wheel Steel Flat Wagon

Heavy-duty steel mesh deck with 2" high side edges to keep items from rolling off. Three heavy-duty 10" pneumatic tires for easy rolling over any surface. "T" handle with auto-type steering. Green powder coat finish.

FW4824-3	24"W X 48"L X 17"H	350 LB. CAPACITY
----------	--------------------	------------------



4-Wheel Steel Flat Wagon

Heavy-duty steel mesh deck with 2" high side edges to keep items from rolling off. Two 10" pneumatic swivel front wheels provide easy maneuverability while the two rear wheels are 16" ball bearing pneumatic for smooth rolling over any surface. Large "U" handle for easy handling. Green powder coat finish.

FW4824	24"W X 48"L X 17"H	750 LB. CAPACITY
--------	--------------------	------------------



2-Tier Steel Wagon

Two heavy-duty steel mesh decks for more space to haul items. 2" high edges keep items from rolling off. Four heavy-duty 10" pneumatic wheels, front two pivot for easy maneuverability. Large "U" handle with foam rubber cover and easy handling. Green powder coat finish. Bottom deck has 330 lb. load capacity; upper deck has 220 lb. load capacity.

TW3820	20"W X 38"L X 36"H	550 LB. CAPACITY
--------	--------------------	------------------



Poly Dump Wagon

Strong poly-deck, high-rimmed tub with steel frame construction hauls up to 1,000 lbs. Large 13" pneumatic tires roll over any surface with ease. Convertible 2-in-1 handle can be pulled or hooked to a lawn tractor/ATV. Powder coat finish.

CW4622	22½"W X 46½"L X 24¾"H	66 LB. CAPACITY
--------	-----------------------	-----------------

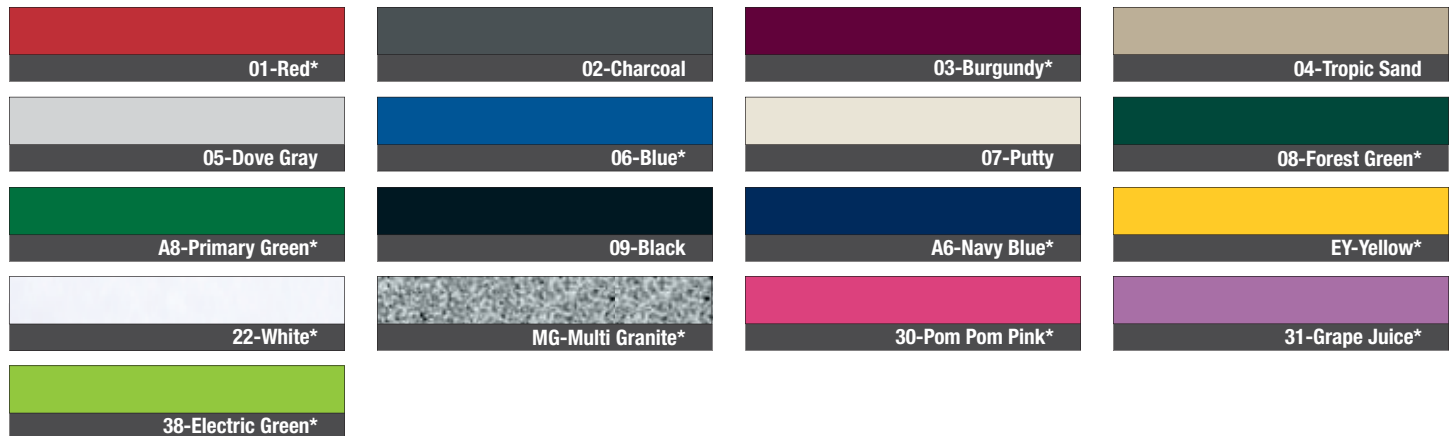


All products on this page are F.O.B. Illinois only.



FINISHES / PACKAGING

COLORS AVAILABLE



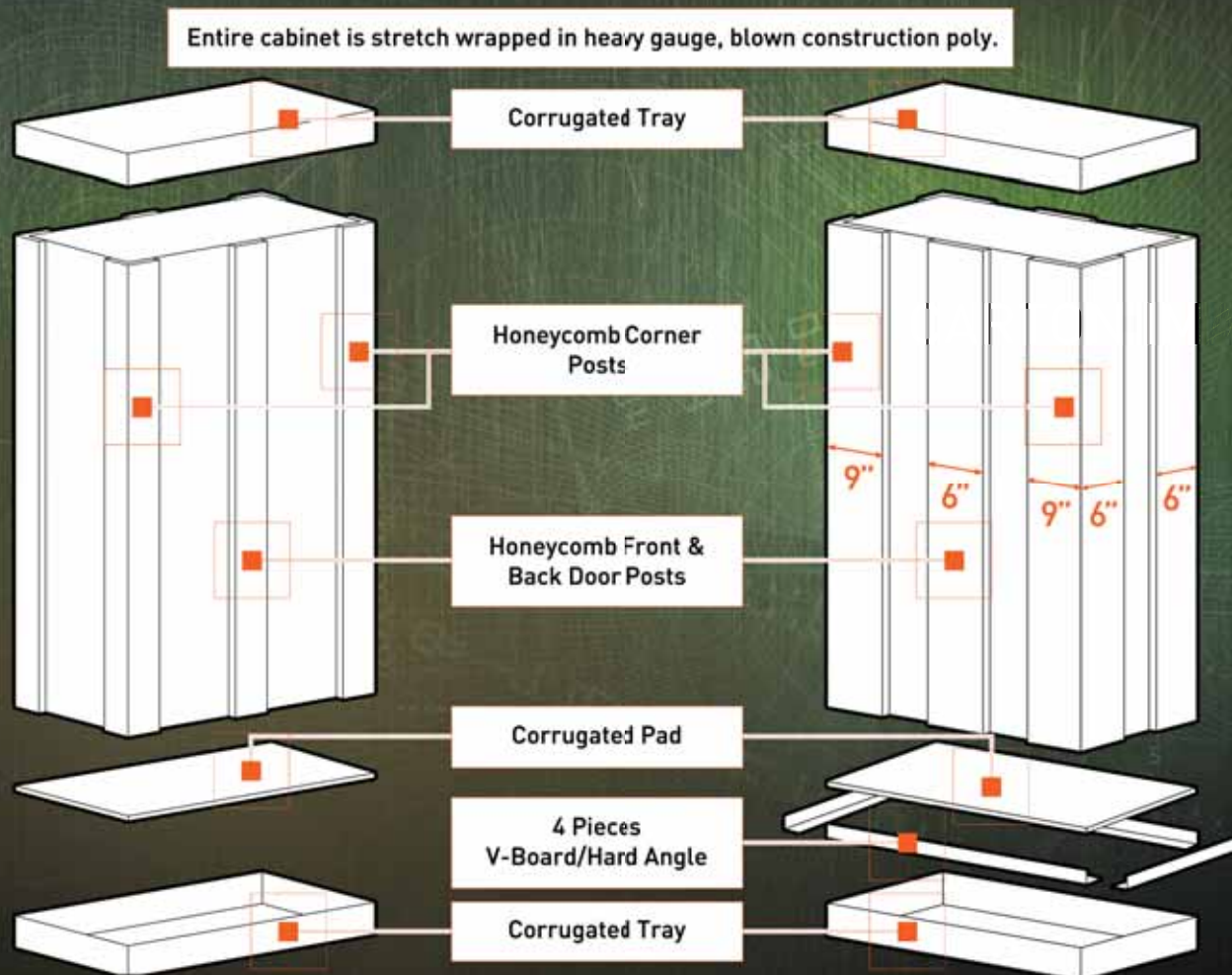
* 01-Red, 03-Burgundy, 06-Blue, 08-Forest Green, A8-Primary Green, A6-Navy Blue, EY-Yellow, 22-White, MG-Multi Granite, 30-Pom Pom Pink, 31-Grape Juice, and 38-Electric Green. Primary Colors Require an Upcharge - See Price List.

ACTUAL COLOR MAY VARY SLIGHTLY. YOU MAY CONTACT CUSTOMER SERVICE FOR A SAMPLE PAINT CHIP. NOT ALL PRODUCTS AVAILABLE IN ALL COLORS.



HONEYCOMB FRAMEPAK

ISTA CERTIFIED PACKAGING HONEYCOMB DELUXE PACK



Sandusky Cabinets, Lee Metal and Atlantic Metal have been major suppliers of Steel Storage Solutions for nearly 80 years.

Our recently combined companies provide a more diverse and broader product line focused on the office, commercial, industrial and educational markets. Our three strategically located shipping locations (California, Tennessee and Pennsylvania) deliver the lowest logistics costs and fastest delivery times in the industry while ensuring that your product is handled a minimal number of times in transit.

» We look forward to working with you and the opportunity to supply your storage needs.

LOCATIONS



SANDUSKY LEE WEST

P.O. Box 517
Arvin, California 93203
Phone: 661.854.5551
1.800.336.0674
FAX: 661.854.2003

SANDUSKY LEE SOUTH

P.O. Box 125
Millington, Tennessee 38083
Phone: 901.872.0188
1.800.264.3453
FAX: 901.873.1239

SANDUSKY LEE NORTH

Sales & Customer Service
P.O. Box 1040
Sandusky, Ohio 44870
Phone: 419.626.5465
1.800.336.0671
FAX: 419.626.3308

SANDUSKY LEE EAST

P.O. Box 6
Littlestown, Pennsylvania 17340
Phone: 717.359.4111
1.800.233.7076
FAX: 717.359.4414



www.sanduskylee.com