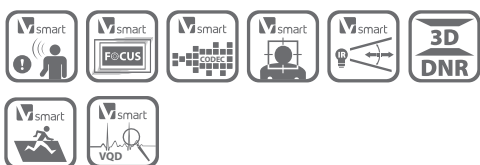


DS-2CD4332FWD-IZHS

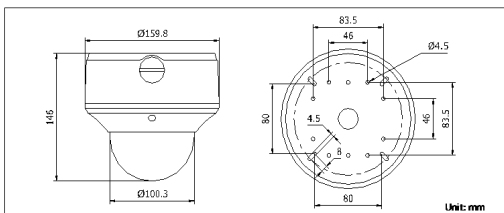
3MP WDR Outdoor Dome Network Camera



Key features

- Up to 2048 x 1536 high resolution
- Full HD1080p video
- Smart Codec
- 120dB WDR, 3D DNR
- Triple streams
- On-board storage, up to 64GB
- Smart Focus: Motorized VF lens (-Z)
- Smart VQD
- Smart Facial Detection
- Intrusion Detection
- Built-in heater(-H)
- Defog
- EIS (Electronic Image Stabilization)

Dimensions



Available models

DS-2CD4332FWD-IZHS

- * -Z: Motorized VF lens
- * -S: 1-ch audio I/O, 1-ch alarm I/O and 1-ch RS-485 interface
- * -H: Smart Heater

DS-2CD4332FWD-IZHS	
Camera	
Image sensor	1/3" progressive scan CMOS
Min. illumination	0.14 lux@F1.4, AGC on, 0 lux with IR
Shutter time	1s ~ 1/100,000s
Slow shutter	Yes
Lens	2.8 ~ 12mm @F1.4, angle of view: 91.2° ~ 28.3° (-Z: motorized VF lens)
Lens mount	Φ14
Angle adjustment	Pan: 0° ~ 355°, tilt: 0° ~ 75°, rotation: 0° ~ 355°
Auto iris	DC drive
Day & night	ICR (Auto/Schedule/Alarm Trigger)
Digital noise reduction	3D DNR
Wide dynamic range	120dB WDR
Compression standard	
Video compression	H.264 / MPEG4 / MJPEG
H.264 codec profile	Baseline profile / main profile / high profile
Video bit rate	32 Kbps ~ 16 Mbps
Audio compression	G.711 / G.726 / MP2L2 *only for -S model
Audio bit rate	64Kbps (G.711) / 16Kbps (G.726) *only for -S model
Image	
Max. resolution	2048 x 1536
Frame rate	60 Hz: 20fps (2048 x 1536), 30fps (1920 x 1080), 30fps (1280 x 720)
3rd stream	Independent setting, up to: 60Hz: 20fps (2048 x 15360)
Image settings	Rotate mode, saturation, brightness, contrast, grayscale adjustable through client software or web browser
BLC	Yes, zone configurable
Defog	Yes
EIS	Yes
Picture overlay	128 x 128, BMP 24bit, zone configurable
ROI	Yes, up to 4 configurable areas.
Network	
Network storage	NAS
Alarm trigger	Intrusion detection, Defocus detection, Motion detection, Face detection, Dynamic analysis, Tampering alarm, Network disconnect, IP address conflict, Storage exception
Protocols	TCP/IP, ICMP, HTTP, HTTPS, FTP, DHCP, DNS, DDNS, RTP, RTSP, RTCP, PPPoE, NTP, UPnP, SMTP, SNMP, IGMP, 802.1X, QoS, IPv6, Bonjour
Security	User authentication, watermark, IP address filtering, anonymous access, reset
System compatibility	ONVIF, PSIA, CGI
On-board storage	Built-in Micro SD/SDHC/SDXC slot, up to 64 GB
Interface	
Communication interface	1 RJ45 10M / 100M ethernet port
Video Output	1 Vp-p composite output (75 Ω/RCA, for lens adjustment when installation)
On-board storage	Micro SD/SDXC card slot, up to 64GB
General	
Operating conditions	-30°C ~ 60°C (-22°F ~ 140°F), humidity 95% or less (non-condensing) -H: -40°C ~ 60°C (-40°F ~ 140°F), with smart heater on
Power supply	24 VAC ± 10%, PoE (802.3af)
Power consumption	Max. 12W ; -Z/-H: Max. 13W
IR range	Up to 30m
Ingress protection	IP66
Impact protection	IEC60068-2-75Eh, 50J; EN50102, up to IK10
Dimensions	Φ 159.8 × 146 mm (Φ 6.29" × 5.75")
Weight	2100 g (4.62 lbs)

Accessories

Notes: * CPM and WML need PC130 cap for installation.
* CM corner and PM pole mount are compatible with WML



CPM
(Camera Ceiling Pendant Mount)



WML
(Long Wall Mount, junction box)



PC160
(160mm Cap)