

OWL-300ANP

Outdoor 802.11a/n 300Mbps Long-Range Wireless AP/CPE

The OWL-300ANP is an outdoor wireless access point/customer-premise equipment supporting IEEE802.11n and is backward compatible with IEEE802.11a.

The unit is a perfect choice for SOHO, SMB or enterprise applications. It supports 4 operation modes that include AP, Client, WISP and WDS mode. With its built in DHCP,

WDS and a variety of other features that provide high flexibility in wireless deployment. The OWL-300ANP supports passive PoE with the included injector that allows for the flexible and easy installation of the unit where there is no accessible power source.

Key Features and Benefits

- IEEE802.11an support at 2.4GHz

Industry standard wireless support allowing cross-vendor compatibility on both 802.11n and backward compatibility to older 802.11a equipment.

- Multiple Operational Modes

- AP Mode: Allows the unit to be configured to allow other wireless devices to access an existing wired network.

- WISP Mode: Wireless ISP mode allows the unit to connect to a wireless Internet Service Providers Access Point. This allows for the connection to the internet wirelessly through 802.11a/n. In this mode the WAN page can be set up to support PPPOE, DHCP Client, PPTP Client L2TP client or Static IP.

- Client Mode: In this mode the unit allows any device connected to its LAN ports to be able to join an existing wireless network

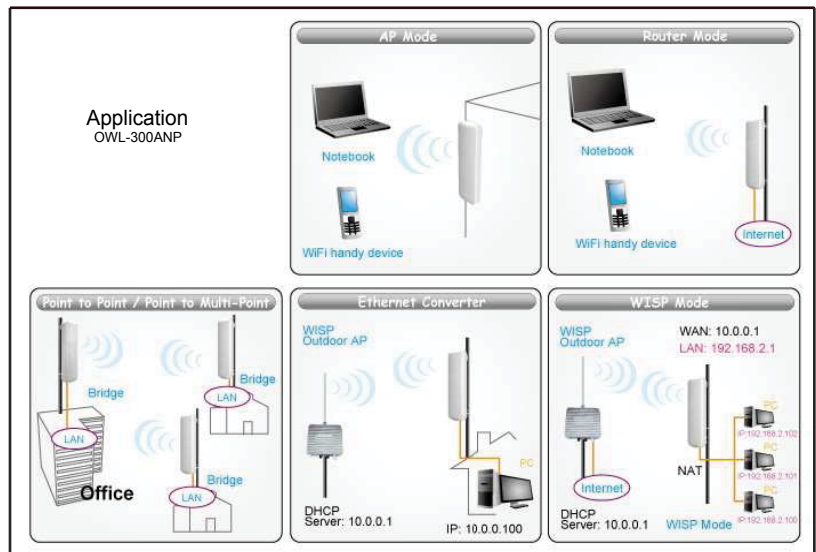
- WDS Mode: This mode allows a wireless network to be expanded without the use of a traditional wired backbone. Doing so provides added flexibility in a wireless deployment, removing the need to consider data cabling for the access points in the network.

- Passive PoE Support

With the PoE support power can be supplied through the included PoE adapter onto a RJ-45 cable to the unit. This allows power to be sent to the device when there is no easy power source for it to be connected to.

- DHCP Server and Client Support

The OWL-300ANP supports DHCP in both Client and Server modes. In server mode the unit can assign IP addresses to client devices connected to it. In Client mode the unit can have its IP address set by the networks DHCP server.



OWL-300ANP

Outdoor 802.11a/n 300Mbps Long-Range AP/CPE

Specifications

Networking

- Connectivity Technology:
 - Wired, wireless
- Standard:
 - IEEE 802.11a/n
- PoE:
 - 24V Passive PoE
- Frequency Band:
 - 5.150~5.250, 5.725~5.875
- Security:
 - WEP-Auto, WPA-PSK, WPA2-PSK, WPA-Auto-PSK, WPA, WPA2, WPA-Auto, 802.1X
- Data Rate:
 - 802.11n:(20MHz): up to 144 Mbps
 - 802.11n:(40MHz): up to 300 Mbps
 - 802.11a: up to 300 Mbps
- Sensitivity:
 - 92dBm @ 802.11a
 - 94dBm @ 802.11n
- Output Power:
 - 802.11a: up to 29 ± 2 dBm
 - 802.11n: up to 29 ± 2 dBm
- Operating Mode:
 - AP mode/Client mode/WISP mode/WDS mode

Warranty and Support

- Warranty: 1 Year
- Support: Free technical support (phone/email); Software support; Premium incident support.

Interface Provided

- Wireless Mode:
 - Access Point/WDS Client/WDS Access Point/WDS Repeater
- SSID:
 - 2 Supported SSIDs
- VLAN:
 - Can be assigned to all LAN, WAN and SSID
- Management:
 - Web Interface
- Antenna:
 - Internal 14 dB patch antenna
- Interface:
 - 1x LAN RJ45, 1x WAN/LAN RJ45, 1x Reset Button
- Power Requirement:
 - DC Jack: 12V DC
 - PoE 12-18V DC Passive PoE
- Mounting:
 - Pole

Environmental Parameters

- Operating Temperature:
 - -30°C - 75°C

Dimensions & Weight

- Dimensions(WXDXH):
 - 280 x 92 x 48mm