

# Digi TransPort® WR11

Compact Commercial Class Cellular Router

Secure WWAN cellular router for retail, point-of-sale and gaming applications.



## Overview

Digi TransPort WR11 gives network management professionals a secure, reliable and low-cost cellular connection for retail point-of-sale and gaming applications.

By focusing on the critical features for payment card and other secure transactions, the router makes it possible for network operators to grow their business by taking advantage of the increasing ubiquity and security of global cellular networks.

Digi TransPort WR11 comes with Digi's enterprise software configuration by default, which means network administrators have the routing, security, VPN and stateful firewall tools they need to create a PCI compliant network right out of the box.

Network administrators are further empowered with Digi SureLink™ and Digi Remote Manager™. Digi SureLink ensures the router maintains a persistent connection with the cellular network for SLA performance and Digi Remote Manager gives the ability to collect detailed network performance statistics.

With the addition of the WR11, the Digi TransPort WR family now offers network management professionals a full suite of routers for every retail or point-of-sale application, from simple Ethernet connections (WR11), Ethernet and legacy serial devices (WR21) and more added-value applications like DSL backup and Wi-Fi access point creation (WR41 and WR44).

### Related Products



Digi TransPort WR21

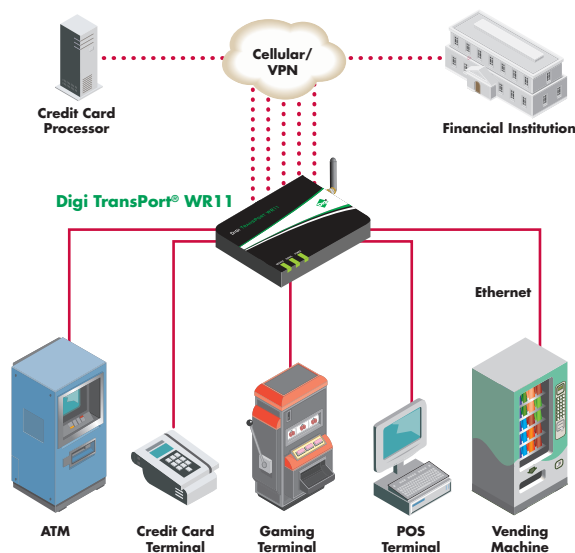


Digi Remote Management



Digi TransPort WR41

### Application Highlight



### Features/Benefits

- Secure, proprietary operating system gives the advanced routing and VPN capability necessary for PCI compliant networks
- Digi SureLink and Digi Remote Manager provide the tools to meet SLAs and measure network performance
- Advanced stateful firewall and failover helps the WR11 self-heal networking problems
- 5-year warranty and Digi's global footprint support long term deployments around the world
- Support for HSPA and EVDO networks removes reliance on wired or customer-hosted WAN connections



# Specifications

# Digi TransPort® WR11

## Wireless WAN

GSM	HSPA+, GPRS, EDGE - 800/850, 900, AWS, 1900, 2100 MHz
CDMA	EV-DO Rev A and 1xRTT - 800/1900 MHz
LTE	Coming soon
WWAN Embedded Module	Telit 910 Series
SIM Slots	2 (covered by SIM door)
Antenna Connectors	1 x 50 Ω SMA (Center pin: female)

## Ethernet

Ports	1
Connector	RJ-45
Standard	IEEE 802.3
Physical Layer	10/100 Base-T
Data Rate	10/100 MBit/s
Mode	Full or Half duplex
Interface	Auto MDI/MDIX

## Management

Remote Management	Device Cloud by Etherios™; Digi Remote Manager™ (user installed/managed); SNMP v1/v2c/v3 (user installed/managed)
Local Management	Web interface (HTTP/HTTPS); CLI (Telnet, SSH, SMS)
Management/ Troubleshooting Tools	FTP, SFTP, SCP; Protocol analyzer with PCAP for Wireshark; Event logging with Syslog and SMTP; NTP/SNTP
Processor and Memory (varies by firmware and OS version)	Freescale i.MX28, 20 MB RAM, 10 MB file space

## Software

Protocol Support	HTTP, HTTPS, FTP, SFTP, SSL, SMTP, Device Cloud SNMP, SNMP (v1/v2c/v3), SSH, Telnet and CLI for web management; remote management via software tool (option); SMS management, protocol analyzer, ability to capture PCAP for use with Wireshark; DynDNS, Dynamic DNS client compatible with BIND9/No-IP/DynDNS
Security/VPN	IP filtering, Stateful inspection firewall with scripting, address and port translation; VPN: IPSec with IKEv1, IKEv2, NAT Traversal; SSL, SSLv2, SSLv3, FIPS 197, Open VPN client and server; PPTP, L2TP; VPN Tunnels: 5 included. Cryptology: SHA-1, MD5, RSA; Encryption: DES, 3DES and AES up to 256-bit (CBC mode for IPsec); Authentication: RADIUS, TACACS+, SCEP for X.509 certificates; Content Filtering (via 3rd party); MAC Address Filtering; VLAN support
Routing/Failover	IP pass-through; NAT, NATP with IP Port Forwarding; Ethernet Bridging; GRE; Multicast Routing; Routing Protocols: PPP, PPPoE, RIP (v1, v2) OSPF, SRI, BGP, iGMP routing (multicast); IPv6 (firmware upgradable); RSTP (Rapid Spanning Tree Protocol); IP Failover: VRRP, VRRP+TM; Automatic failover/ failback to second GSM network/Standby APN
Other Protocols	DHCP; Dynamic DNS client compatible with BIND9/No-IP/DynDNS; QoS via TOS/DSCP/WRED

## Power

Input	5 VDC (power supply with barrel connector included)
Consumption	Typical: 3.5 W; Max: 15 W

## General

Dimensions (L x W x H)	3 in x 4 in x 1 in (7.62 cm x 10.16 cm x 2.54 cm)
LEDs	Power On, WWAN Signal Strength, WWAN Service
Operating Temperature	0° C to 40° C (32° F to 104° F)
Relative Humidity	5% to 95% (non-condensing)

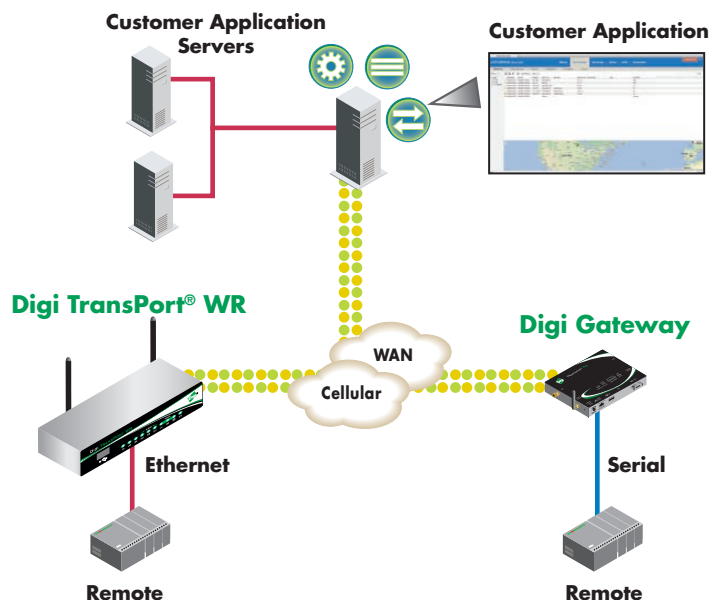
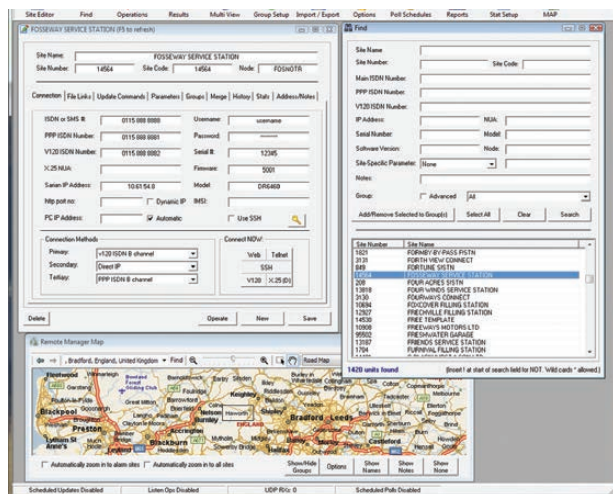
## Approvals

GSM/CDMA	PTCRB and CDG
Carrier Certifications	Certified by AT&T, Sprint, Verizon, and most major carriers. See <a href="http://www.digi.com">www.digi.com</a> for a full list.
Safety	UL 60950, CSA 22.2 No. 60950, EN60950
Emissions and Immunity	CE, FCC Part 15 Class B, AS/NZS CISPR 22, EN55024, EN55022 Class B

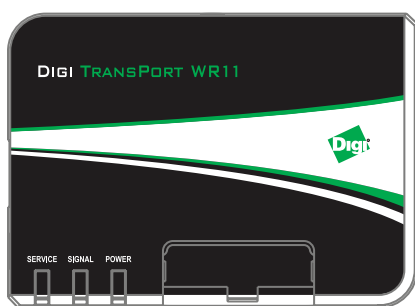
## Device Management Features

- View of all remote devices and their connection status
- Automatic registration of newly connected devices
- Remote device configuration
- Actions include device grouping and scheduling of operations
- Monitoring of user specified events
- Device statistic and report generation
- Alarm generation and alerting
- Secure access to all devices from web browser, anywhere
- Remote reboot of device and default reset

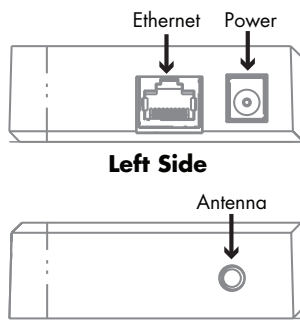
## Easy Remote Configuration and Management



## Product Images and Part Numbers



Top



Left Side

Right Side

Part Number	Description
WR11-U900-DE1-SU	Digi TransPort WR11, GSM, with US Power Supply
WR11-U900-DE1-SW	Digi TransPort WR11, GSM, with International Wall Plug Kit
WR11-C200-DE1-SU	Digi TransPort WR11, Verizon
WR11-C100-DE1-SU	Digi TransPort WR11, Sprint

Visit [www.digi.com](http://www.digi.com) for part numbers.

**DIGI SERVICE AND SUPPORT** - You can purchase with confidence knowing that Digi is here to support you with expert technical support and a strong five-year warranty. [www.digi.com/support](http://www.digi.com/support)

**Digi International  
Worldwide HQ**

877-912-3444  
952-912-3444

**Digi International  
France**

+33-1-55-61-98-98  
[www.digi.fr](http://www.digi.fr)

**Digi International  
Japan**

+81-3-5428-0261  
[www.digi-intl.co.jp](http://www.digi-intl.co.jp)

**Digi International  
India**

+91-80-4287-9887

**Digi International  
Singapore**

+65-6213-5380

**Digi International  
China**

+86-21-5150-6898  
[www.digi.cn](http://www.digi.cn)

BUY ONLINE • [www.digi.com](http://www.digi.com)

© 2013 - 2014 Digi International Inc.

All rights reserved. Digi, Digi International, the Digi logo, Device Cloud by Etherios, Digi Remote Manager, Digi SureLink and Digi TransPort are trademarks or registered trademarks of Digi International Inc. in the United States and other countries worldwide. All other trademarks are the property of their respective owners. All information provided is subject to change without notice.

[info@digi.com](mailto:info@digi.com)



91002585  
A2/114