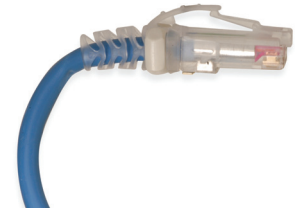
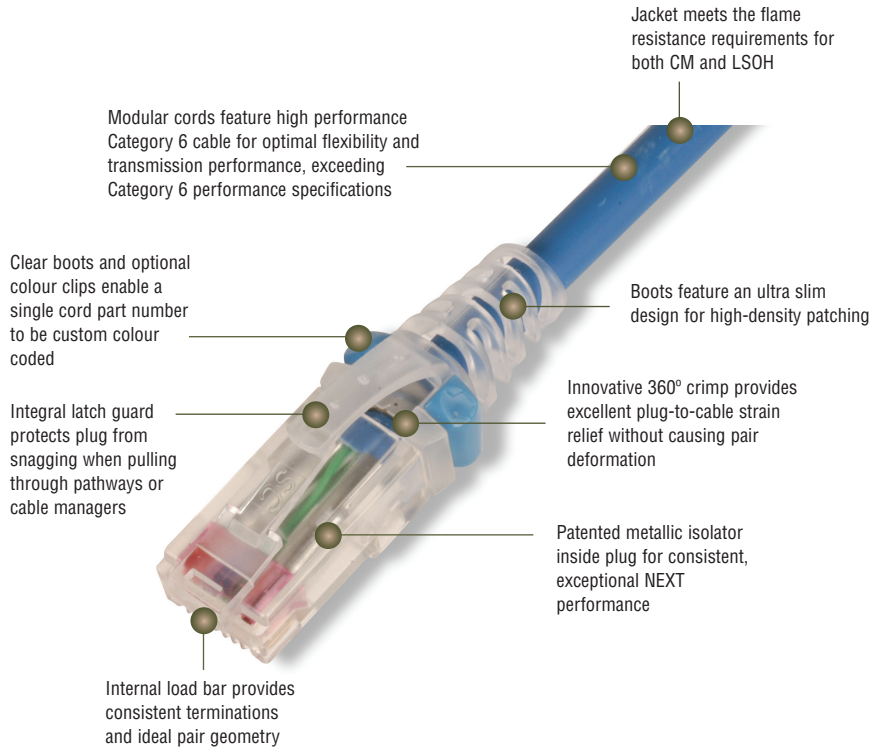


MC[®] 6 UTP Modular Cords

Siemon's Category 6 series of modular cords are key components to ensure optimum channel performance of our Category 6 UTP systems. A variety of product enhancements contribute to the cord's superior performance — including 250 MHz rated stranded cordage, a patented crosspair isolator and an innovative 360° crimp, which provides excellent plug-to-cable strain relief without causing pair deformation.



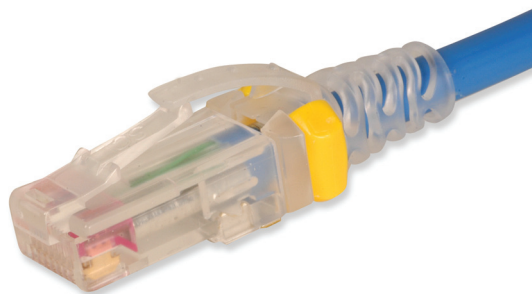
Excellent Bend Relief

Boot and integrated strain relief ensures proper bend relief, critical for Category 6 performance



Colour Coding

Optional coloured clips enable field colour coding and can easily be snapped into place without having to disconnect cords



STANDARDS COMPLIANCE

- ISO/IEC 11801-1 Ed 1.0 (Class E_A)
- IEC 60603-7
- ANSI/TIA-568.2-D (Category 6)
- TIA-968-A (formerly FCC Part 68 Subpart F)
- IEEE 802.3af (Type 1 PoE)
- IEEE 802.3at (Type 2 PoE)
- IEEE 802.3bt (Type 3 PoE)
- IEEE 802.3bt (Type 4 PoE)
- Power over HDBaseT (PoH)
- UL US Listed

PRODUCT INFORMATION

PERFORMANCE SPECIFICATIONS*

ELECTRICAL	
Contact Resistance	20 mΩ
Input to Output DC Resistance	200 mΩ
Min. Dielectric Withstand Voltage (contact to contact)	1000 V DC or AC peak
Insulation Resistance	500 mΩ
Compatibility	Backwards to cat 5e
Current Rating @ 25° C	1.5 A
Power over Ethernet	Suitable for PoE Type 1,2,3,4 and PoH
MECHANICAL – GENERAL	
Operating Temperature	-10 to 60 °C, (14 to 140 °F)
Flammability Rating	UL 94 - V0
Green Features	RoHS, lead-free, halogen-free, PVC free
Contact Materials	Copper alloy with contact plating of 50 micro inches gold or equivalent
Plastic Materials	Flame retardant thermoplastic
Marking	P/N, length, performance level, QC
MECHANICAL – PLUG	
Number of Plug Insertion Cycles	750
Min. Plug Retention Force	50N
Plug Compatibility	Compatible with RJ45 outlets

MECHANICAL – CABLE (STRANDED)	
Wire Size Range (nominal)	26 AWG 7x34 Stranded tinned copper
Cable Construction	UTP
Cable O.D. (nominal)	5.3mm (0.20 in.)
Wiring	T568A/B
Jacket Type	CM/LSOH
Bend Radius	25mm (1.0 in.)

MC 6 UTP Modular Cords

Category 6 MC, double-ended, 4-pair UTP stranded modular patch cord, T568A/B, clear boot.

MC6-(XX)M-(XX)

Cord Length

- 01 = 1m (3.3 ft.)
- 1.5 = 1.5m (5.0 ft.)
- 02 = 2m (6.6 ft.)
- 03 = 3m (9.8 ft.)
- 05 = 5m (16.4 ft.)
- 7.5 = 7.5m (24.6 ft.)

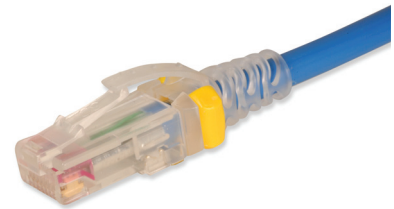
Cord Colour

- 01 = Black
- 02 = White
- 03 = Red
- 04 = Grey
- 05 = Yellow
- 06 = Blue
- 07 = Green
- 08 = Violet
- 09 = Orange

CLIP-(XX) Colour coding clip, bag of 25

Clip Colour

- 01 = Black
- 02 = White
- 03 = Red
- 04 = Grey
- 05 = Yellow
- 06 = Blue



Ⓢ Add "B" for bulk pack of 100 modular cords.

Because we continuously improve our products, Siemon reserves the right to change specifications and availability without prior notice.

For additional resource information:
Visit our web site at www.siemon.com

Because we continuously improve our products, Siemon reserves the right to change specifications and availability without prior notice.

Worldwide Headquarters
North America
Watertown, CT USA
Phone (1) 860 945 4200

Regional Headquarters
Europe Russia Africa
Chertsy, Surrey, England
Phone (44) 0 1932 571771

Regional Headquarters
China
Shanghai, P.R. China
Phone (86) 215385 0303

Regional Headquarters
Latin America
Bogota, Colombia
Phone (571) 657 1950/51/52

Regional Headquarters
India Middle East
Dubai, United Arab Emirates
Phone (971) 4 3689743

Regional Headquarters
Asia Pacific
Sydney, Australia
Phone (61) 2 8977 7500

Siemon Interconnect Solutions
Watertown, CT USA
Phone (1) 860 945 4213 US
www.siemon.com/SIS