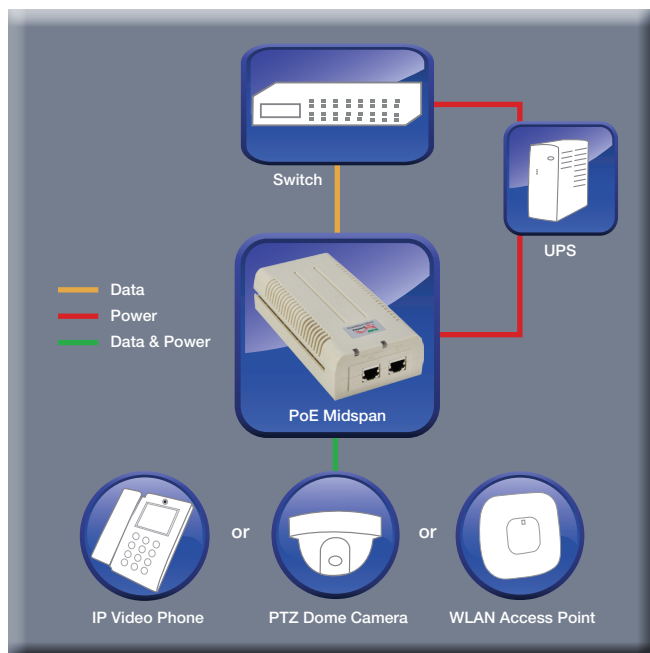


# PowerDsine 5501G/12-24VDC

30W, Gigabit, Single-port PoE Midspan, 12-24VDC Input



## Overview

The PowerDsine 5501G is a Best-of-Breed single port solution for remote powering of PoE powered devices up to 30W. It can be powered by DC input in the range of 10-36VDC.

It is designed specifically to power IEEE 802.11n and IEEE 802.3at access points, pan-tilt-zoom (PTZ) and dome cameras, IP videophones, thin clients and other high power Ethernet end-terminals with 30W of power. The 5501G is also backward compatible and safe to use with any 802.3af terminal such as VoIP phones, IP cameras and wireless LAN access points.

The 5501G offers green PoE by providing power over all 4-pairs resulting in 50% lower line losses over the Ethernet lines.

It can power both existing 10/100Base-T devices and emerging wireless Gigabit devices such as WI-MAX and wireless IEEE 802.11n access points.

With the plug-and-play installation, it is easily and cost effectively implemented leveraging your existing Ethernet infrastructure while providing the flexibility of a future-proof scalable network.

## PD-5501G/12-24VDC Features

- Up to 30W of power over 4-pairs
- 10-36VDC input voltage
- IEEE802.3at compliant
- Plug-and-play installation
- Guaranteed uptime

## PD-5501G/12-24VDC Specifications

No. of Ports	1
Pass Through Data Rates	10/100/1000 Mbps
Power over Ethernet Output	Pin Assignment and Polarity: Data Pairs 1/2 (-) and 3/6 (+) Spare Pairs 7/8 (-) and 4/5 (+) Output Power Voltage: 54-57Vdc User Port Power: 30W Max.
Input Power Requirements	DC Input Voltage: 10-36VDC DC Input Current: 3.8A @12VDC
Dimensions	87 mm (W) x 43 mm (H) x 166 mm (L) 3.46 in. x 1.68 in. x 6.53 in.
Weight	.992 lbs (450g)
Indicators	System Indicator: Green—Main Power  Channel Power: Green—Power delivered over 4 pairs
Connectors	Shielded RJ-45, EIA 568A and 568B
Environmental Conditions	Operating Ambient Temperature: 14° to 122°F (-10°C to 50°C) @30W  Operating Humidity: Maximum 90%, Non-condensing  Storage Temperature: -4° to 158°F (-20° to 70°C)  Storage Humidity: Maximum 95%, Non-condensing  Operating Altitude: -1000 to 10,000 ft. (-304.8 to 3048 m)
Reliability	MTBF: 150,000 hrs. @25°C
Thermal Rating	24 BTU/Hr
Warranty	1-year
Regulatory	IEEE 802.3af (PoE), IEEE 802.3at (including 2-event), RoHS Compliant, WEEE Compliant, CE
Electromagnetic Emission & Immunity	FCC Part 15, Class B EN 55022 Class B (Emissions) EN 55024 (Immunity)
Safety Approvals	GS Mark Per IEC60950

## Ordering Information

Part Number	Name	Ports
PD-5501G/12-24VDC	PowerDsine 5501G 12-24VDC	1-port