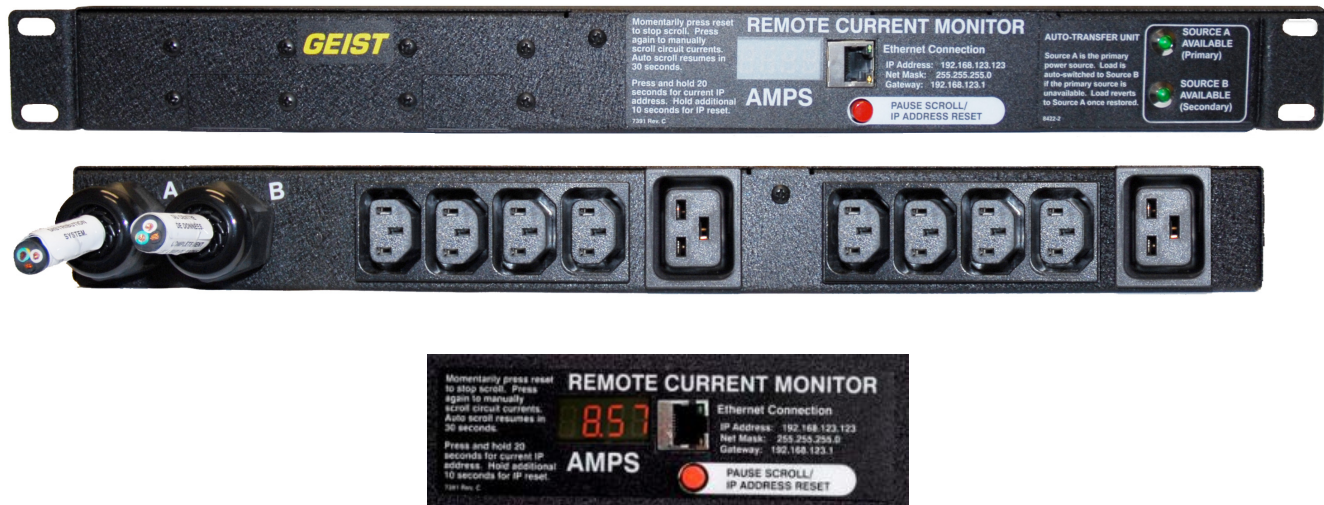


Part Number	ATRMN102-102I82ST6
Power Configuration	Current Monitoring, Transfer Switch
Physical Configuration	20A, 208V, 3.3kW
	19 in / 483 mm Horizontal



Description	<p>The ATRMN102-102I82ST6 provides redundant power for single-corded data center equipment. If the primary power source experiences failure, the transfer switch automatically shifts to a secondary source, ensuring uninterrupted service. Once power is restored, the unit automatically switches back to the original source of power.</p> <p>The ATRMN102-102I82ST6 also allows local and remote current monitoring and offers alarms for issues that can arise at the breaker, circuit, phase and aggregate level. With the advantage of seeing current usage feedback in an instant, the chances of overloading the unit when adding, removing or adjusting equipment is minimized.</p>
-------------	--

Racknet Enabled – The ATRMN102-102I82ST6 easily integrates with Racknet – Geist's DCIM software. Racknet (purchased separately) collects and reports critical power and environmental data for multiple PDUs in one, user configurable interface. Users gain immediate remote access to trends, alarms and histories of devices in the data center through a standard Web browser. Racknet saves both time and cost associated with managing each device individually. Contact your Geist rep for more details.

Product Summary	<p>ATRMN102-102I82ST6 - Current Monitoring, Transfer Switch, 20A, 208V, Horizontal, (8) IEC C13,(2) IEC C19, 10 ft power cords with 6-20P, Current Local/Remote</p> <p>Digital RMS Scrolling Current Meter & Ethernet Connection for Remote Monitoring/Alarms/SNMP v1 Traps +/- 3.5% Accuracy with Full Scale 60Hz sine wave input, , Source A, Source B & Total</p>
Monitoring	<p>Current Local/Remote</p> <p>Digital RMS Scrolling Current Meter & Ethernet Connection for Remote Monitoring/Alarms/SNMP v1 Traps +/- 3.5% Accuracy with Full Scale 60Hz sine wave input</p>

Plug Form



Receptacle



IEC C13 (Quantity: 8)



IEC C19 (Quantity: 2)

ATRMN102-102I82ST6 - Product Specification and Options

Monitoring	Current Local/Remote Digital RMS Scrolling Current Meter & Ethernet Connection for Remote Monitoring/Alarms/SNMP v1 Traps +/- 3.5% Accuracy with Full Scale 60Hz sine wave input
Monitoring Level 1	Source A, Source B & Total
Auto Switching Relay	DPDT Relay, UL Relay Rating: 35A @ 277 VAC, Expected Life @ Rated Load: 100K Operations, Mech Life: 10M Operations, Operate Time: less than 25 ms, Release Time: less than 25 ms, Pick Up: 85% or less of Nominal, Feeds A & B Must be Phase Synchronized
Quantity Of Inputs	2 (Dual Input)
Voltage	208V
Current	20A
VA per Input (Load Capacity)	3.3kW
Frequency	50/60 Hz
Over Current Protection	None
Switch	Auto Switching - event of power failure
Indicators - LED(s)	2
Power Cable Wire Gauge	12/3
Power Cable Length	10ft
Plug Type	(2) NEMA 6-20P
Combined Total Receptacle/Socket Quantity	10
Receptacle/Socket Type #1	IEC C13
Quantity on Rear #1	8
Style #1	Banks of 4
Maximum Output per Receptacle/Socket #1	15A per receptacle bank
Voltage per Receptacle/Socket #1	208V
Receptacle/Socket Type #2	IEC C19
Quantity on Rear #2	2
Style #2	Individual
Maximum Output per Receptacle/Socket #2	20A
Voltage per Receptacle/Socket #2	208V
Network Connection	Ethernet via RJ45
Network Protocols Supported and Data Access Formats	HTTP, DHCP, ICMP, TCP/IP, HTML, SNMP v1, XML
Heavy Steel -Black Powder Coat	Yes
Configuration	19in / 435mm Horizontal Rackmount
Adjustable Mount Brackets	Yes
Made in the USA	Yes
Product Warranty	Three Year
Certification/Agency Approvals	FCC Part 15 Class A Conformance
Certification/Agency Approvals	RoHS Compliant
Certification/Agency Approvals	UL & c-UL Listed 60950
Chassis Dimensions (HxWxD)	1.72in x 17.1in x 8.5in
Shipped Weight	9lbs (4.08kg)

Managing Multiple Geist PDUs?

Customers who purchase ATRMN102-102I82ST6 select Geist's Racknet-Aggregator solution to proactively manage their Geist PDUs and environmental solutions.

Racknet-A

Geist's PDU management solution, Racknet-A gives visibility to data collected by Geist power strips in one centralized location. Now you can manage power data at the rack level.

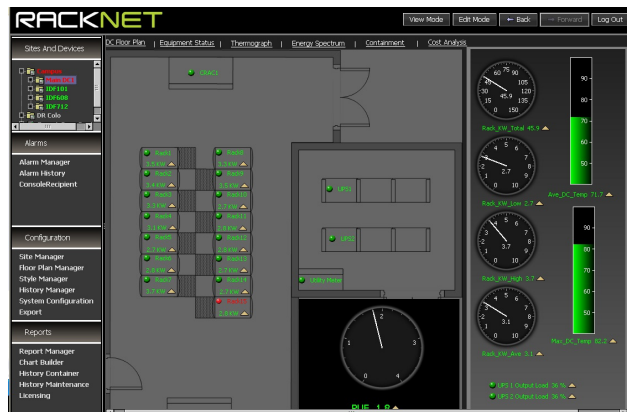
With Racknet-A you can:

- Consolidate the management of all Geist hardware into one, intuitive interface.
- Save space and associated costs on expensive network switches.
- Manage hundreds of devices or thousands of points through *GNET.
- Collect and store data to examine trends and create reports.
- Set alarm notifications in one centralized location.
- Trend data and run reports on recorded points.

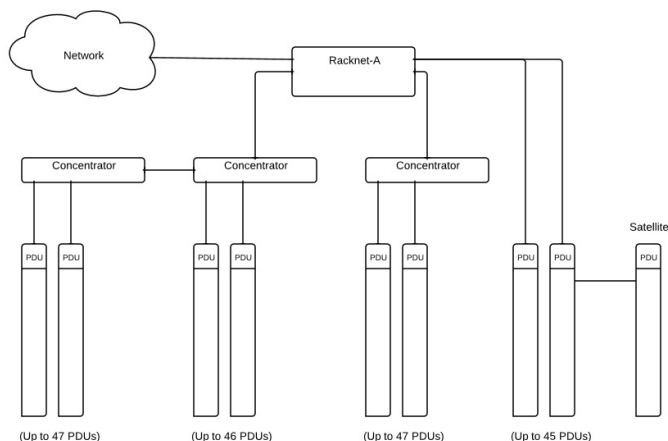
Complete your PDU purchase with the perfect centralized management tool.

*What is GNET?

GNET is the advanced network that brings various Geist devices together—using only one IP address.



Auto Discover Geist PDUs with Racknet



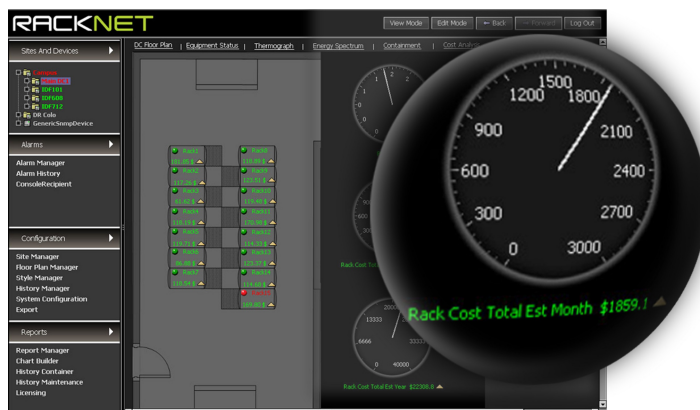
Racknet Connection Diagram

Need to manage third-party equipment?

Try our vendor neutral Racknet products.

Both Racknet-S and Racknet-AS come with an expanded feature set that provide even more flexibility, reach, and control of your white space equipment. Each of these solutions support third-party devices and comes with full customization capabilities. Additional management tools help create meaningful data calculations and display key information in real-time.

For more information on Geist's Racknet solutions visit:
<http://www.geistglobal.com/products/manage>



Geist Americas

1821 Yolande Ave
 Lincoln, NE 68521 USA
 1.800.432.3219 or
 1.402.474.3400
www.geistglobal.com

Geist Europe

Unit 1, The Monarch Centre,
 Venture Way,
 Priorswood, Taunton,
 Somerset, TA2 8DE UK
 +44 (0) 1823 275100
www.geisteurope.com

Geist Asia

China
 Tiley Plaza Bldg. A, Unit #2910,
 No. 199 Haide 3 Road,
 Nanshan Shenzhen,
 Guangdong Province, China.
 Postal Code: 518000
 Tel: +86.755.86639505
www.geistglobal.com

Geist Asia

Hong Kong
 Tel: +852 81764860
 Email: salesasia@geistglobal.com