

# D-Link®

DUAL BAND  
**N+**  
750



Simultaneous Dual Band for HD, gaming and Web surfing at the same time

**HD**

Up to 450Mbps for HD video and up to 300Mbps for your everyday needs



4 Gigabit Ethernet ports for optimal wired connectivity

## Wireless N750 Dual Band Router

Blazing Fast HD Streaming

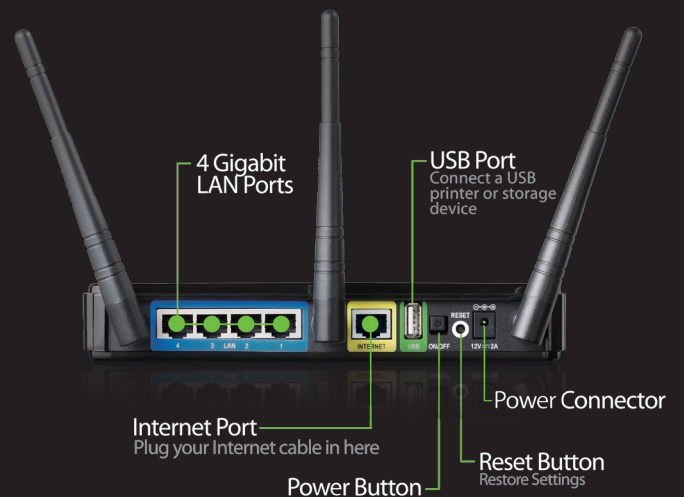
DIR-835

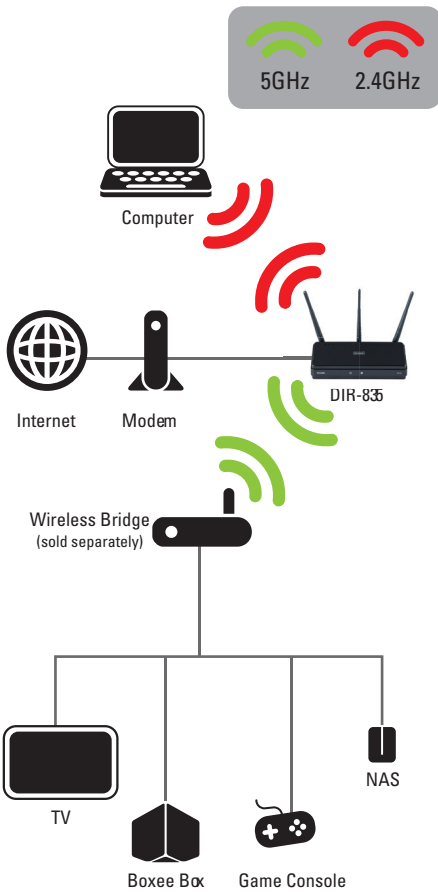
### Best-In-Class Features

High intensity games and HD videos need a high intensity router to keep up with all that streaming. At the same time you want to work, surf, and email just like always.

The Wireless N750 Dual Band Router features simultaneous dual band – 2.4GHz and 5GHz, so you can stream HD videos and play games while chatting and surfing the web with less skipping and interference.

Fast multimedia streaming at speeds of up to 450Mbps on the low interference 5GHz band means no waiting for videos to load before you can watch them. If you prefer a wired connection, 4 Gigabit ports provide you with top speed for all your gaming and video needs.





### Choose the Right Product for You

	N 300	DUAL BAND N+ 300	DUAL BAND N+ 600	DUAL BAND N+ 750
<b>SPEED &amp; RANGE</b>				
Share the Internet throughout your home network	<input type="checkbox"/>	<input type="checkbox"/>	<input type="checkbox"/>	<input checked="" type="checkbox"/>
Easy file sharing within your home network	<input type="checkbox"/>	<input type="checkbox"/>	<input type="checkbox"/>	<input checked="" type="checkbox"/>
Better range and speed over Wireless G	<input type="checkbox"/>	<input type="checkbox"/>	<input type="checkbox"/>	<input checked="" type="checkbox"/>
Backwards compatible with Wireless G	<input type="checkbox"/>	<input type="checkbox"/>	<input type="checkbox"/>	<input checked="" type="checkbox"/>
Network connection safe with wireless encryption and Dual Active firewall	<input type="checkbox"/>	<input type="checkbox"/>	<input type="checkbox"/>	<input checked="" type="checkbox"/>
Push button Wi-Fi protected setup (WPS)	<input type="checkbox"/>	<input type="checkbox"/>	<input type="checkbox"/>	<input checked="" type="checkbox"/>
Intelligent antenna technology for better Wi-Fi coverage	<input type="checkbox"/>	<input type="checkbox"/>	<input type="checkbox"/>	<input checked="" type="checkbox"/>
QoS engine prioritizes video and gaming traffic	<input type="checkbox"/>	<input type="checkbox"/>	<input type="checkbox"/>	<input checked="" type="checkbox"/>
Designed for more coverage and performance throughout your home	<input type="checkbox"/>	<input type="checkbox"/>	<input type="checkbox"/>	<input checked="" type="checkbox"/>
Up to 300 Mbps on 5GHz band for streaming HD content with less interference	<input type="checkbox"/>	<input type="checkbox"/>	<input type="checkbox"/>	<input checked="" type="checkbox"/>
Up to 450Mbps on 5GHz band for streaming HD content with less interference and blazing speeds	<input type="checkbox"/>	<input type="checkbox"/>	<input type="checkbox"/>	<input checked="" type="checkbox"/>

#### COMBINE WITH THESE D-LINK PRODUCTS FOR A COMPLETE SOLUTION:



**Wireless Network Camera**  
Add a camera to your wireless network

**DCS-932L**



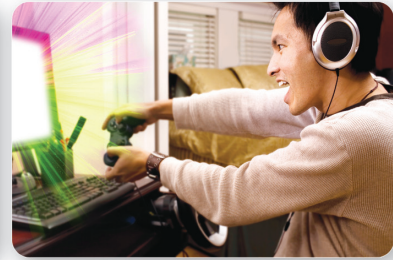
**Wireless USB Adapter**  
Add a wireless connection to your computer via USB adapter

**DWA-160**



**Network Storage**  
Add storage to your network & back-up files

**DNS-325**



## Features

- + Up to 750Mbps (N300+N450)
- + Simultaneous Dual-band 2.4 GHz and 5 GHz
- + 4 Gigabit Ethernet Ports
- + IEEE 802.11 n/g/a Compliant
- + USB 2.0 with SharePort™ Plus
- + Built-in QoS Engine Enhances Internet Experience
- + Supports Secure Wireless Encryption Using WPA™ or WPA2™ Security
- + WPS (Wi-Fi® Protected Setup™) for simple Push-Button Wireless Network Configuration
- + UPnP® Support
- + Parental Control Powered by OpenDNS
- + True Gigabit Routing Connectivity
- + Supports IPv6
- + 24/7 Basic Installation Support<sup>5</sup>
- + 1-Year Limited Warranty<sup>6</sup>

## Think Green

D-Link Green™ devices are about providing eco-friendly alternatives without compromising performance. They are designed to help conserve energy, protect our environment from harmful substances, and reduce waste by using recyclable packaging.

To learn more, visit [www.dlinkgreen.com](http://www.dlinkgreen.com).

## Technical Specifications

### STANDARDS

- + IEEE 802.11g
- + IEEE 802.11n
- + IEEE 802.11a
- + IEEE 802.3
- + IEEE 802.3u
- + IEEE 802.3ab

### ETHERNET INTERFACE

- + 4 10/100/1000 Gigabit Ethernet Ports

### SECURITY

- + Wi-Fi Protected Access™ (WPA, WPA2)<sup>®</sup>
- + WPS™

### LEDs

- + Power
- + WLAN

### POWER

- + DC 12V

### OPERATING TEMPERATURE

- +30° to 104° F (0° to 40° C)

### OPERATING HUMIDITY

- 10% to 95% non-condensing

### CERTIFICATIONS

- + FCC
- + IC
- + Wi-Fi<sup>®</sup>
- + IPv6

### DIMENSIONS

- + Item (WxDxH): 6.2" x 4.7" x 1.2"

### WEIGHT

- + Item: 0.86 lbs

### WARRANTY

- + 1 Year Limited<sup>6</sup>



<sup>1</sup> Maximum wireless signal rate derived from IEEE Standard 802.11 specifications. Actual data throughput will vary. Network conditions and environmental factors, including volume of network traffic, building materials and construction, and network overhead, lower actual data throughput rate. Environmental factors will adversely affect wireless signal range. Wireless range and speed rates are D-Link RELATIVE performance measurements based on the wireless range and speed rates of a standard Wireless G product from D-Link. Maximum throughput based on D-Link Wireless N devices.

<sup>2</sup> Latest software and documentation are available at <http://support.dlink.com>.

<sup>3</sup> Computer must adhere to Microsoft's recommended System Requirements.

<sup>4</sup> The software included with this product is not Mac-compatible.

<sup>5</sup> 24/7 Basic Installation Support is available only in the USA for the first 30 days from date of original purchase.

<sup>6</sup> 1-Year Limited Warranty available only in the USA and Canada.

All references to speed and range are for comparison purposes only. Product specifications, size and shape are subject to change without notice, and actual product appearance may differ from that depicted herein.

©2011 D-Link Corporation/D-Link Systems, Inc. All rights reserved. D-Link, the D-Link logo, the D-Link RoHS logo are registered trademarks of D-Link Corporation or its subsidiaries in the United States and/or other countries. Other trademarks or registered trademarks are the property of their respective owners.

## MINIMUM SYSTEM REQUIREMENTS

- + Cable or DSL Modem
- + Computer with:
  - Windows® 7, Windows Vista®, Windows® XP, SP3, or Mac OS® X (v10.4)<sup>4</sup>
  - Internet Explorer v7 or Mozilla Firefox v3.0
  - CD-ROM Drive
  - Network Interface Card
- + For Internet Access:
  - Cable or DSL Modem
  - Subscription with an Internet Service Provider (ISP)

## PACKAGE CONTENTS

- + Wireless N 750 Dual Band Router
- + Ethernet Cable
- + Power Adapter
- + Quick Install Guide
- + CD Rom