



EDH5240

HDcctv

2 Megapixel 1080/720 HDcctv

3-Axis Indoor IR Color Dome Camera with Surface or Flush Mount Capability

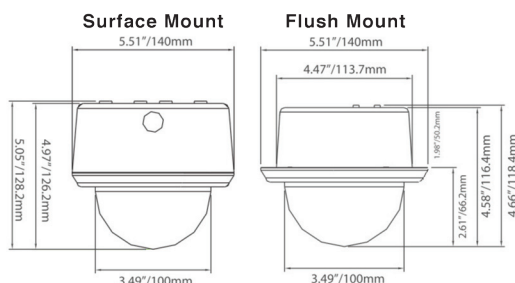
The EDH5240 is an HD-CCTV 3-axis indoor dome camera with true Day/Night capability plus IR illumination, in a housing which can be surface or flush mounted. Based on a 2 megapixel progressive scan sensor for your choice of 1080 or 720 resolution HD 100% digital images, it delivers vastly superior video quality compared to traditional CCTV images. HDcctv's superior resolution and megapixel technology not only has the benefit of capturing more critical detail for evidentiary purposes but also allows for a wider viewing area thus reducing the number of cameras required to monitor a scene. This directly reduces the overall capital investment required to improve the effectiveness of a surveillance system.

No major upgrade to the IT network is required to deploy this powerful technology; HD-CCTV cameras communicate at digital speeds up to 1.5Gb/s over existing or new coaxial cable (RG59 or other types for longer distances), using industry standard BNC connectors. With a vari-focal 3.3~12mm megapixel auto iris lens, combined with 34 high output IR LEDs to produce detailed images under low or no light conditions out to a range of 20m/65 feet or more, the EDH5240 easily accommodates a wide range of indoor applications while delivering stunning image quality.

Features

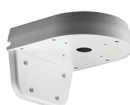
- HDcctv for real time megapixel video over coax
- Megapixel allows
 - Digital zoom with clarity
 - Wider area coverage vs. SD
- 1080HD (1920x1080 ~ 2 megapixel) or 720HD (1280x720 ~ 1 megapixel) field select
- HDcctv format field selectable: 1080i60/50, 1080p30/25 or 720p60/50
- 2 megapixel progressive scan CMOS sensor
- 3.3~10mm AI VF megapixel lens captures the desired field of view
- True day/night operation with automatic ICR module
- IR distance to 65 feet/20m or more
- High output IR LEDs, lifespan of 20,000 hours
- Easy to use OSD setup menu
- Back Light Compensation (BLC) and Auto White Balance (AWB)
- Flexible mounting and aiming
 - 3-axis positioning for wall or ceiling mounting
 - Field select choice of surface or flush mounting
 - Optional wall bracket BA-ED01
 - Standard definition TV out test point for aim and focus
- Dual Voltage 12VDC/24VAC with auto polarity detect

Pickup Device	1/2.7" 2 megapixel CMOS sensor
Sensitivity	0.5lux/F=1.4 ; 0 lux IR ON
S/N Ratio	45dB
Video Format Main Output	HDcctv
Resolution Main Output	1920x1080 or 1280x720
Video Mode Main Output	Field select 1080i60, 1080p30 or 720p60 for 60Hz systems 1080i50, 1080p25 or 720p50 for 50Hz systems
Main Output Connector	BNC-F
Video Format Test Output	NTSC/PAL selectable 1V p-p
Test Output Connector	Pin header; adapter cable to BNC-F supplied
Electronic Shutter	Auto, 1/60(1/50)~1/8000
Lens Type	Megapixel Vari-focal lens, Auto Iris, f=3.3~12mm, F=1.4
FOV Calc: 1080 Mode	6.61mm/image circle/diagonal; 5.76mm H x 3.24mm V
FOV Calc: 720 Mode	4.41mm/image circle/diagonal; 3.84mm H x 2.16mm V
True Day/Night Control	Yes (Auto IR cut filter removal)
Back Light Compensation	On/Off selectable
Auto Gain Control	High/Middle/Low/Off selectable
Auto White Balance	AWB/One Push WB/Manual WB/Indoor/Outdoor selectable
Gamma Correction	PC/TV selectable
OSD Menu	Yes (operated from 5-axis joystick control)
Mirror	H_MIR/V_MIR/Rotate
IR Distance	20m/65 feet
IR Wavelength	850nm
IR Emitters	34 high output LEDs
IR LED Lifespan	20,000 hours operating
Power Source	12VDC/24VAC auto polarity detect
Power Consumption	24VAC: 7.2W IR off, 11.3W max IR on 12VDC: 4.7W IR off, 7.4W max IR on
Dimensions (W x H)	Surface Type: 140mm x 128mm / 5.5" x 5.1" Flush Type : 140mm x 68mm / 5.5" x 2.8"
Weight	660kg /1.45 lbs
Operating Temperature	0°C~40°C ; 32°F~104°F (20%~80% Humidity)
Certifications	FCC/CE



Ordering Information:

EDH5240: 2MP I 1080 HDcctv Indoor Dome, 3.3-12mm, IRs



Optional Accessories:

BA-ED01: "L" Mounting Bracket