

## Elusion Series Chairs





**Multifunction mid back swivel/tilt chair**

**key dimensions**

- Seat: 20-1/2" w × 21" d
- Back: 20" w × 19" h
- Seat Height Adjustment: 18-1/2"–22-7/8"
- Overall Height: 36-5/8"–40-1/4"

**elusion series**  
features and overview

**Multifunction performance and mesh comfort.**

- Ergonomic design
- Adjusts to fit multiple users—seatslide, back height adjustments, forward tilt
- Cool, breathable mesh back
- Contoured seat cushion for all-day comfort
- Manufacturer's five-year limited warranty

ALE-EL42ME10B



Back delivers support and cool mesh comfort.



Easy reach levers offer versatile comfort settings.

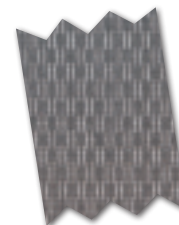


Arms adjust vertically, front-to-back and at angles.



Adjusts for customized ergonomic comfort.

**in-stock upholstery**



Black Mesh (back)



Black Fabric (seat)



Casters supplied with the chairs on these pages are not suitable for all floor types. Alternative casters are available to meet your specific needs.