



ICEBERG

strong. durable. versatile.

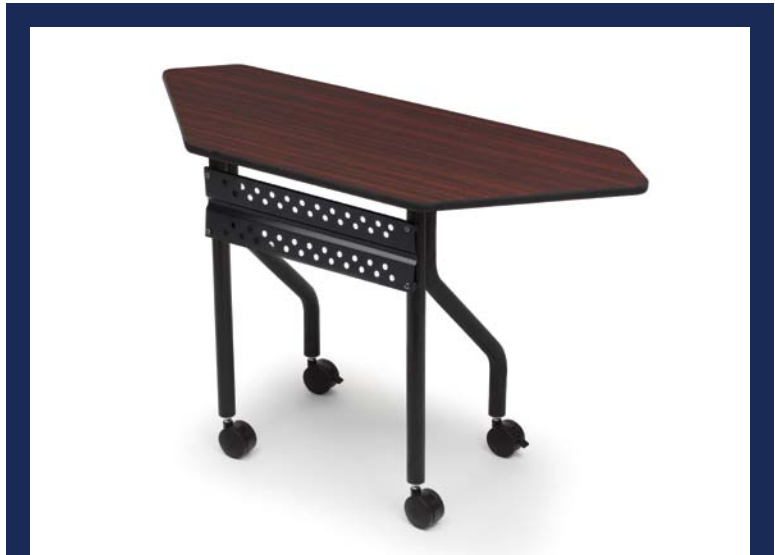


OfficeWorks[™] Mobile Training Tables

OfficeWorks™ Mobile Training Tables

Functional, durable mobile training tables can easily be reconfigured to improve meeting productivity. Durable, wear resistant ¾" melamine top. Strong 1-½" offset dual legs allows for maximum legroom and no inference with the perforated modesty panel.

- Durable and long lasting, 18" deep, ¾" t-molded wear resistant melamine top
- 1-½" Diameter, powder coated, heavy gauge offset dual leg design maximizes leg room
- Perforated modesty panel adds stability and function
- 2" Diameter casters, 2 locking, 2 non-locking, for improved navigation over transoms
- Top and legs sold together in one carton



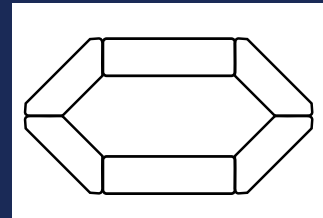
48" Trapezoid Mobile Training Table, Mahogany

Specifications

| Item # | Size | Finish | Leg Color | Ship Weight (lbs.) |
|--------|---------------|----------|-----------|--------------------|
| 68057 | 18" x 60" | Gray | Charcoal | 39 |
| 68058 | 18" x 60" | Mahogany | Black | 39 |
| 68067 | 18" x 72" | Gray | Charcoal | 45 |
| 68068 | 18" x 72" | Mahogany | Black | 45 |
| 68077 | 48" Trapezoid | Gray | Charcoal | 39 |
| 68078 | 48" Trapezoid | Mahogany | Black | 39 |



Left: 18" x 60" Mobile Training Table, Mahogany
Right: 18" x 60" Mobile Training Table, Gray

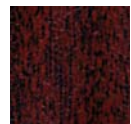


48" Trapezoid Mobile Training Table possible configuration.

Finishes



Gray



Mahogany

