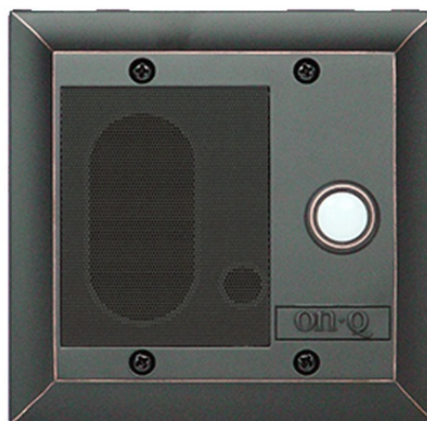


Intercom Door Unit, Weather Resistant, Oil Rubbed Bronze

F7596-OB



This Intercom Door Unit is sure to increase the curb appeal of any home. It home runs from the enclosure for efficient installation and features a backlit button for easy operation at night. The door unit is the perfect addition to any intercom system.

features & benefits

- **Back lit button allows for easy operation at night.**
- **Easy installation with 110 punchdown connection.**
- **Available in five colors:** White, Antique Brass, Brushed Stainless, Oil-Rubbed Bronze and Shiny Brass.

specifications

General Info

Cable Type: Cat 5
Color: Oil Rubbed Bronze
Connection Type: 110 IDC Punchdown
Product Series: inQUIRE 1000
Type: Door Unit
Housing Material: Zinc Alloy

Assembly/Installation Information

Mounting Hardware Included: Yes

Listing Agencies/Third Party Information

FCC Standard: Yes
UN SPS C: 43221525

Construction Information

Installation Location: Outdoor

Dimensions

Depth Metric: 3.8 cm
Depth U S: 1.5"
Height Metric: 12.1 cm
Height U S: 4.75"
Width Metric: 12.1 cm
Width U S: 4.75 in

Cord Information

Cord Length U S: 325 Foot home-run
Pinning:

- | | |
|-----------------|---|
| 1. Blue/White | Audio In (Speaker) |
| 2. Blue | Ground |
| 3. Orange/White | Power |
| 4. Orange | Audio Out (Microphone) |
| 5. Green/White | Relay (changing from Mic to Speaker) |
| 6. Green | Not Used |
| 7. Brown/White | Not Used |
| 8. Brown | Door Chime Activation (when doorbell button is pressed) |

Technical Information

Frequency Response: up to 16kHz
Humidity: 90% Relative Humidity (Non-Condensing)
Mounting: Wall
Operating Temperature Celsius: -25°C to 55°C
Operating Temperature Fahrenheit: -13°F to 131°F
Power Peak: 2 W
Power RM S: 3 W
Product Fits Into: Double Gang Electrical Box
Speaker Depth Metric: 28 mm
Speaker Depth U S: 1.1 in
Speaker Impedance Load: 8 ohms
Supported Standards: FCC PART 15 B