

100Mbps Full/Low Profile Ethernet Multi Mode SC Fiber PCI NIC Card 2km

Product ID: PCI100MMSC



The PCI100MMSC 100 Mbps Fiber Optic (MM SC) PCI Ethernet Adapter Card offers the perfect "Fiber-to-the-desk" solution allowing you to add a multimode SC fiber port to your system through an available standard or low-profile PCI slot.

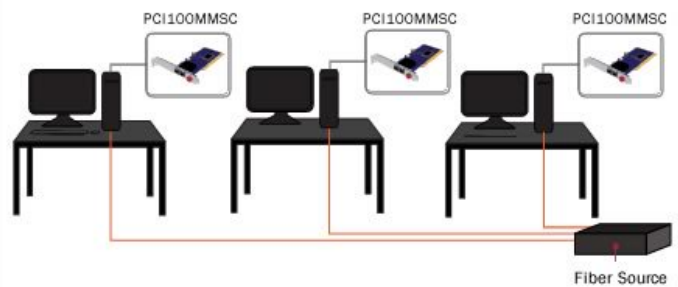
A simple solution for connecting a computer directly to a fiber network, the Fiber Ethernet Adapter card can be installed in the computer through any PCI slot and is perfectly suited for high bandwidth applications with support for Full Duplex operation and 10/100 Mbps transfer speeds at distances of up to 2km.

Application Diagrams: Installing the PCI100MMSC is a simple upgrade

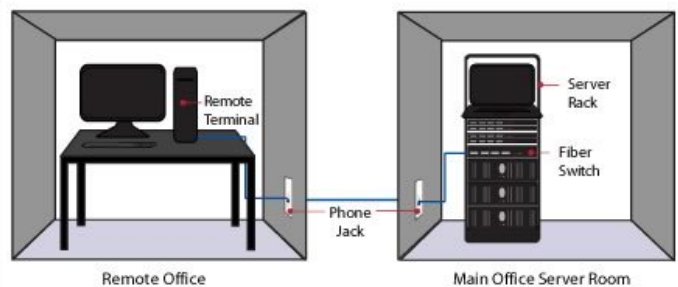
Ideal for secure network setups, the PCI100MMSC offers a direct fiber connection which is not susceptible to electronic interference like standard RJ45 networks.

Backed by a StarTech.com 2-year warranty and free lifetime technical support.

Perfect for government fiber-to-the-desk initiatives



Run fiber optic network cable directly to a user's PC with optimal network transmission and security



Connect remote workstations to your network over extreme distances using a single secure fiber cable

Certifications, Reports and Compatibility



Applications

- Add a 10/100 Mbps SC Fiber connection to a PCI compatible PC
- Add network connectivity to a PC up to 2km Away
- Create a secure connection between the PC and a fiber switch
- Perfect for remote embedded industrial monitoring systems, and high speed video surveillance

Features

- Compliant with PCI rev. 2.1 standards
- Advanced Configuration Power Management Interface (ACPI) 1.0
- Supports PCI Bus Power Managements Interface Ver. 1.0/1.1 and Network Device Class Power Managements Ver. 1.0a
- Supports PC99, PC2001, and NET PC requirements
- VLAN Management
- Optical Wavelength of 1310nm
- Maximum fiber distance up to 2km
- Wake on LAN support
- Connection diagnostic utilities
- WHQL drivers

Hardware	Warranty	2 Years
	Bus Type	PCI / PCI-X (5 / 3.3V)
	Card Type	Standard Profile (LP bracket incl.)
	Chipset ID	VIA/VLI - VT6105M
	Industry Standards	IEEE802.3u, 100Base-FX, IEEE802.3x, IEEE802.1Q, IEEE802.1p
	Interface	Fiber Ethernet
	Ports	1
Performance	Buffer Size	2 KB
	Compatible Networks	100 Mbps
	Full Duplex Support	Yes
Connector(s)	Connector Type(s)	1 - PCI / PCI-X (Universal 3.3 & 5V, 32-bit) Male
	External Ports	1 - Fiber Optic SC Duplex Female
Software	OS Compatibility	Windows® 2000, XP, Vista, 7, 8, 8.1, 10 Windows Server® 2003, 2008 R2, 2012 Linux 3.5.x to 4.4.x <i>LTS Versions only</i>
Indicators	LED Indicators	1 - Green - Activity
		1 - Green - Link
Power	Power Consumption (In Watts)	1W
Environmental	Humidity	5~95% RH
	Operating Temperature	0°C to 45°C (32°F to 113°F)
	Storage Temperature	-10°C to 70°C (14°F to 158°F)
Physical Characteristics	Product Height	0.7 in [1.8 cm]
	Product Length	4.8 in [12.1 cm]
	Product Width	2.2 in [56 mm]
	Weight of Product	2.8 oz [80 g]
Packaging Information	Package Height	6.9 in [17.5 cm]
	Package Length	8.4 in [21.3 cm]
	Package Width	2 in [50 mm]
	Shipping (Package) Weight	7.1 oz [200 g]
What's in the Box	Included in Package	1 - PCI to SC 10/100 Fiber NIC

1 - Low profile bracket

1 - Driver CD

1 - Instruction Manual

Product appearance and specifications are subject to change without notice.