

Panasonic
ideas for life

Interactive Whiteboard
UB-T781W / UB-T781 / UB-T761
UB-T780 / UB-T760



Dynamic Learning Through Images

- A variety of screen sizes for high-impact lessons
 - 83-inch (UB-T781W)
 - 77-inch (UB-T781 / UB-T780)
 - 64-inch (UB-T761 / UB-T760)
- Suppressed light reflection for easier viewing
 - Highly durable surface
- Built-in stereo speakers for effective lessons*
 - Optional wireless kit*
- Optional "Plug and Go" install free kit

*For UB-T781W / UB-T781 / UB-T761 only



UB-T761



UB-T781

Elite **Panaboard**

Active, Visual-Based Education Makes the Classroom More Exciting

The elite Panaboard is an advanced educational tool that lets you grab students' attention. It makes it easy to create effective, eye-catching teaching materials and it promotes a style of active, visual-based teaching and learning that makes the classroom fun for both teacher and students.

By connecting a PC with Internet access and a projector, you can bring the huge amount of information available on the Web or any information on your PC right into your classroom.

Panasonic and the elite Panaboard open the door to a new kind of active, visual-based education.



A woman, presumably a teacher, stands on the left, smiling and holding a black electronic pen. She is positioned in front of a large Panasonic Panaboard. The Panaboard displays a presentation titled "Animals living in Africa". The presentation includes a map of the African continent with a red arrow pointing to it, and four photographs of animals: a Lion, a Zebra, a Giraffe, and a Panther. The teacher is pointing at the map with the electronic pen. On the right, a young girl with blonde hair, wearing a blue and white striped shirt, is sitting at a desk and waving her right hand. The background is a light blue gradient.

A Tool that Supports an Advanced, New Style of Teaching

- Animal photos, maps, and other images can be archived in the elite Panaboard's gallery for quick, easy retrieval and display.
- The electronic pen lets you create vividly coloured drawings and illustrations that make lessons come alive.
- With the elite Panaboard book's Attachment function you can organise teaching materials and Website addresses, making it easier to prepare lessons.
- Using a PC with Internet access, you can connect to the Internet and display information to the classroom.
- Teaching materials can be quickly produced and stored on a PC and displayed in the classroom.

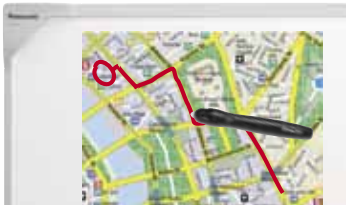
Long-Life Surface and Convenient Tools An Extra Durable Board and Multi-Functional Electronic Pen

The board is designed for durability and scratch-resistance, and uses a special material that prevents reflections from the projector lamp so it is easy to see from a wide angle. The electronic pen functions as a pen, an eraser, and a pointer, just like a computer mouse, and is designed for easy holding, even for the small hands of children.



It's Like Right-Clicking with a PC Mouse **Easy Push-and-Press Operation**

Simply pushing the button and pressing the pen tip to the board surface serves the same function as clicking the right button of a PC mouse. Pushing the button and quickly double-clicking the board changes the indication immediately to a pointer (arrow tool), even when using a different tool. This easy two-in-one operation brings greater convenience and efficiency to the classroom.



Play Videos Complete with Sound Built-in Stereo Speakers*

The elite Panaboard's built-in stereo speakers offer the versatility to share audio with your class. Videos with sound and the use of sound effects help to attract the students' attention and make your lessons more effective.

*This function is not available for the UB-T780 / UB-T760.



Easy Remote Control Wireless Functions*

With the optional wireless kit, there is no need for a cable to connect the computer and the board. This also allows more flexible classroom layouts.

*This function is not available for the UB-T780 / UB-T760.
*This option is not available in certain destinations.
(The wireless kit will be available in the 2nd quarter of 2009.)



Make Your Lessons More Effective 2 USB Hub Ports*

The elite Panaboard is equipped with two additional USB ports. This allows you to connect additional devices to enhance your lessons such as a document camera, a web microscope, or even a printer without using up the necessary resources in your PC.

*This function is not available for the UB-T780 / UB-T760.

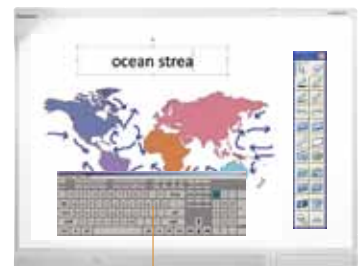


Enjoy Even Greater Ease "Plug and Go" Install-Free Kit

By connecting the optional install free kit, which comes complete with application software, to the board you can use the application right away without having to install it onto a PC. This saves installation time, and is especially helpful when many computers are being used.

Easy Operation of PC Software Presentation Mode

The elite Panaboard lets you use teaching materials created with other PC applications. Your favorite applications and the elite Panaboard book combine to form a powerful tool for creating and displaying eye-catching materials that make teaching much more effective and learning more fun.



Add Information Easily **Screen Keyboard** (Start from the Drawing Tool.)

A keyboard can be displayed on the elite Panaboard screen to allow operation of your PC keyboard. Using the elite Panaboard, you can easily add or change information on materials produced using applications on your PC. This minimises wasted time in the classroom, so you can make every minute count.

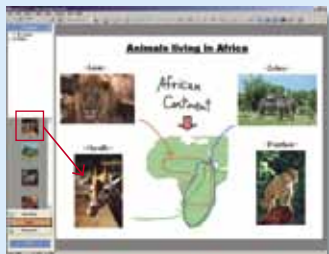


Lessons Are More Engaging and Effective

Smooth, Easy Lesson Preparation **elite Panaboard book**

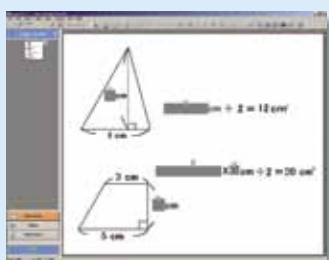


This contains Panasonic tools for creating and editing teaching materials. The variety of tools provided includes virtually everything you need to produce creative materials.



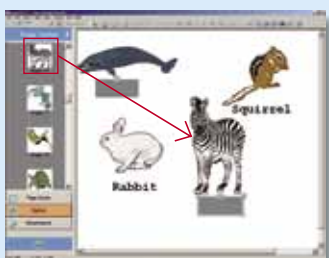
Preparing Quizzes with Hidden Answers **Shade**

This tool lets you hide parts of text and illustration. It is useful for covering the answer while students engage in solving the problem.



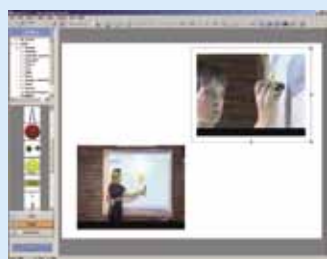
A Host of Illustrations **Gallery**

The Gallery contains illustrations covering a wide variety of topics that you can use to create teaching materials.



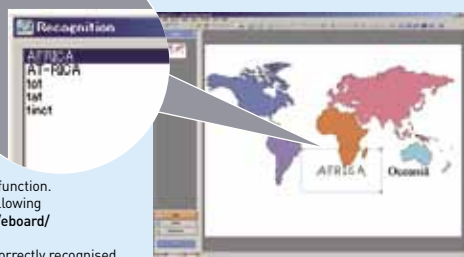
Adding Fun with Motion Images **Movie Player**

Images (avi, wmv, mpg, mpeg, or swf) can be inserted into the elite Panaboard book and played back. Lessons are more engaging when they contain a variety of images.



Making Handwritten Characters Clearer **Handwriting Recognition***

Handwritten characters are converted into typed characters, right before your eyes.



*An additional application is required for this function.
For detailed information, please access the following URL: <http://panasonic.co.jp/pcc/products/en/eboard/elite/download.html>

*Some languages and characters may not be correctly recognised.



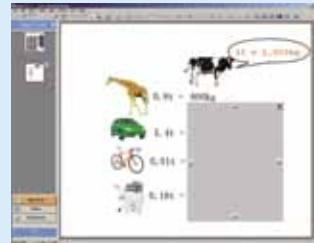
Movable Toolbar **Drawing Tool**

From the toolbar you can select an icon to launch a software application. The toolbar can be set to remain on the screen at all times for instant access.

Diverse Applications **Screen Shade**



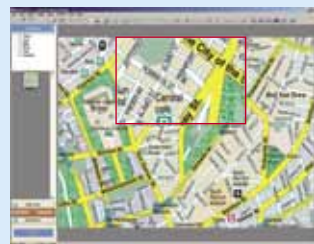
The sliding shade can conceal a part of the screen or the entire display. One typical use is to cover up the answer or explanation while students try to answer a question or solve a problem.



Improve Viewing Ease **Magnifier**



Use this tool to enlarge a part of the screen. For example, it is handy for enlarging and showing a part or section of a map.



Saving Lessons as Motion Images **Recorder**



With this function, you can record the entire screen or any part of it that you designate. It is convenient for recording lessons for later review. If you connect a microphone to the PC, you can also record voices simultaneously.



Recording selection

Attracting the Students' Attention **Spotlight**



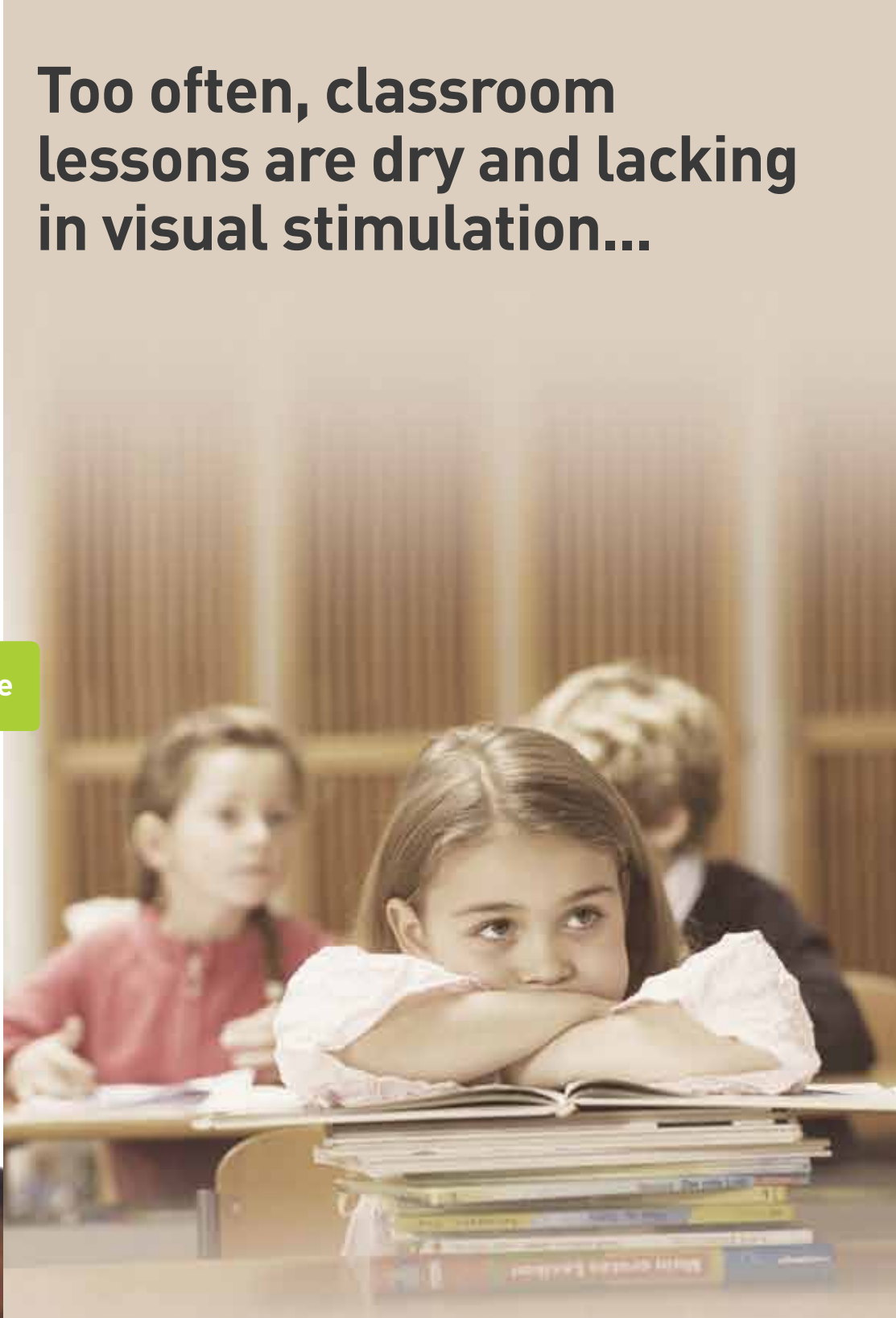
This tool lets you shine a spotlight on part of the screen. It is an effective way to attract the students' attention to a particular place on the board.



Too often, classroom lessons are dry and lacking in visual stimulation...



Change



Conventional Teaching

- Pasting animal photos, maps, or other visual aids on a board is slow, cumbersome, and dull.
- Lessons consist mainly of written text. There are too few colourful visual elements that can captivate and engage children.
- The same type of materials are used again and again, so lessons tend to become monotonous.
- Materials and information must be prepared far in advance.
- Good education begins with effective teaching materials – but these can be expensive to produce for every lesson.

UB-T781W / UB-T781 / UB-T761 / UB-T780 / UB-T760 Specifications

General			
Power Supply	AC 100-240 V, 50/60 Hz		
Power Consumption	UB-T781W / T781 / T761	0.4A (Standby/Operational)	
	UB-T780 / T760	0.1A (Standby/Operational)	
External Dimensions* (H x W x D, without stand)	UB-T781W	1,340 mm x 1,899 mm x 89 mm [52.8 in. x 74.8 in. x 3.5 in.]	
	UB-T781 / T780	1,340 mm x 1,752 mm x 89 mm [52.8 in. x 69.0 in. x 3.5 in.]	
	UB-T761 / T760	1,142 mm x 1,489 mm x 89 mm [45.0 in. x 58.6 in. x 3.5 in.]	
Panel Dimensions* (H x W)	UB-T781W	1,175 mm x 1,839 mm [46.3 in. x 72.4 in.]	
	UB-T781 / T780	1,175 mm x 1,692 mm [46.3 in. x 66.6 in.]	
	UB-T761 / T760	977 mm x 1,429 mm [38.5 in. x 56.3 in.]	
Effective Area (H x W)	UB-T781W	958 mm x 1,829 mm [37.7 in. x 72.0 in.]	
	UB-T781 / T780	1,165 mm x 1,502 mm [45.9 in. x 59.1 in.]	
	UB-T761 / T760	967 mm x 1,239 mm [38.1 in. x 48.8 in.]	
Weight* (without stand)	UB-T781W	28 kg [61.7 lbs]	
	UB-T781	27 kg [59.5 lbs]	
	UB-T780	26 kg [57.3 lbs]	
	UB-T761	21 kg [46.3 lbs]	
	UB-T760	20 kg [44.0 lbs]	
Panel Surface	Anti-glare coated metal plate		
Interactive Function			
Interface	UB-T781W / T781 / T761	USB2.0 [B-Type Connector] x 1	
		USB2.0 [A-Type Connector] x 2	
	UB-T780 / T760	USB2.0 [B-Type Connector] x 1	
Battery for Electronic Pen	LR03 (AAA size) x 1 Alkaline battery (included)		
Position Sensor	Ultrasonic receiver & infrared rays sensor		

Design and specifications are subject to change without notice.

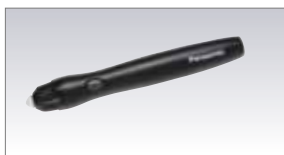
Microsoft®, Windows®, Windows Vista® and the Windows logo are either registered trademarks or trademarks of Microsoft Corporation in the United States and/or other countries. IBM and AT are trademarks of International Business Machines Corporation in the United States, other countries, or both. All other product/brand names, trademarks or registered trademarks identified herein are the property of their respective owners.

To run the elite Panaboard software, Microsoft .NET Framework 2.0 or later and DirectX 7.0 or later are required. When you install the elite Panaboard software on the CD-ROM, NET Framework 2.0 will be installed on your computer if it is not already installed. The system requirements above do not meet the recommended specifications of all operating systems. You must have Windows Media® Player 10 or later, or Adobe® Flash® Player installed to insert and play back video. Inserting and playing back video is not supported in Windows 2000 SP4. The handwriting recognition feature is supported in Windows Vista Ultimate, Windows Vista Home Premium, Windows Vista Business, and Windows XP Tablet PC Edition 2005. If you are using Windows 2000 SP4 or later, or Windows XP Professional, you must have the Tablet PC SDK and Microsoft Windows XP Tablet PC Edition 2005 Recognizer Pack installed to use the handwriting recognition feature. For detailed information, please access the following URL. <http://panasonic.co.jp/pcc/products/en/eboard/download/index.html> The handwriting recognition feature is not supported in Windows Vista Home Basic and Windows XP Home Edition. You must have sufficient available hard disk space to record and play back video.

Option



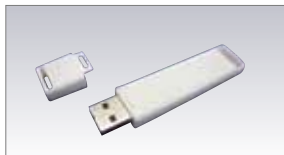
Stand [KX-B061]
Only for UB-T781W / UB-T781 / UB-T780



Electronic Pen [UE-608025]

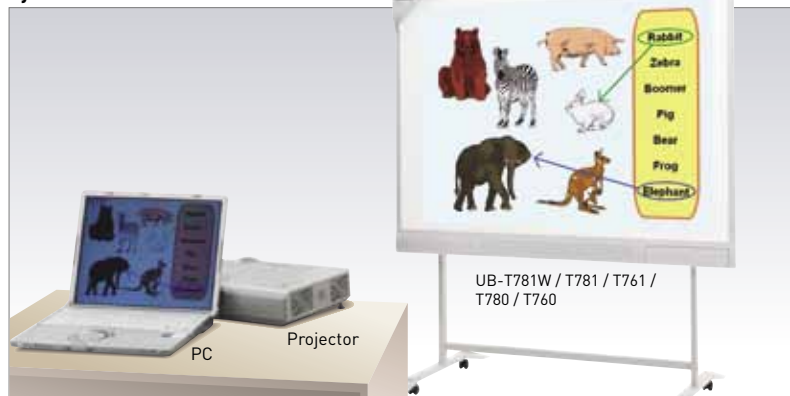


Wireless Kit [UE-608040]
Only for UB-T781W / UB-T781 / UB-T761
(Available in the 2nd quarter of 2009)



Install-Free Kit [UE-608050]

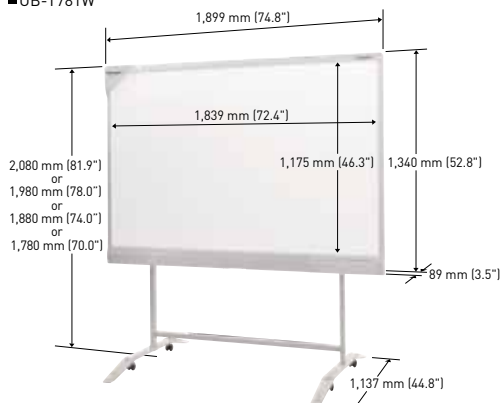
System



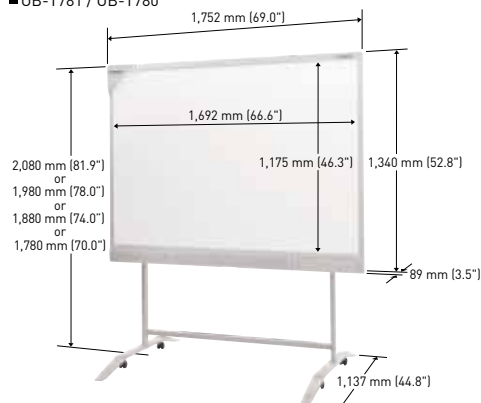
The UB-T781W / UB-T781 / UB-T761 / UB-T780 / UB-T760 does not include a PC or projector.

Dimensions (Including optional stand for UB-T781W / UB-T781 / UB-T780)

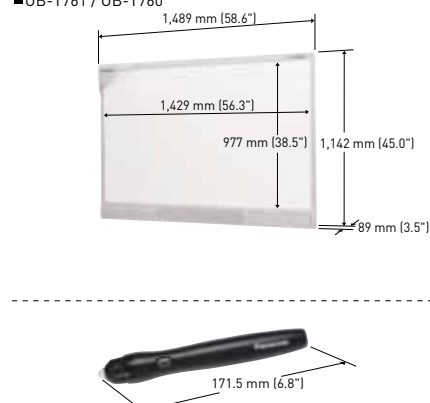
■ UB-T781W



■ UB-T781 / UB-T780



■ UB-T761 / UB-T760



For Safety

- To prevent the unit from falling, which can cause injury, remove it when it is no longer in use rather than leaving it installed.
- Do not alter the unit or modify any parts. Alteration or modification can cause fire or electric shock.
- Have the unit installed, removed and disposed of only by qualified service personnel.

Audio Circuit (UB-T781W / UB-T781 / UB-T761)		
Audio Input Level	309 mVrms (1 KHz, 0 dB, 10 kΩ)	
Number of Terminal	One (Stereo)	
Interface	Stereo Mini Plug (φ3.5 mm)	
Audio Output	CLOTH-EDGE CONE TYPE Speaker x 2 (90 mm x 50 mm [3.5 in. x 2.0 in.]	
Wattage	Standard : 2 W + 2 W Maximum : 4 W + 4 W	
Sound Pressure	85 dB ± 2 dB (1 m [39.4 in.] from the centre of the body)	
System Requirements		
Computer	IBM® PC/AT® or compatible machine with a CD-ROM drive	
CPU	Intel® Pentium® 4 or higher processor	
Interface	USB 2.0	
Operating System	Windows® 2000 (SP4), Windows® XP (SP2), Windows Vista® (32 bit)	
Memory	Windows® 2000 (SP4): 256 MB or more Windows® XP (SP2): 512 MB or more Windows Vista® : 512 MB or more	
Hard Disk	At least 400 MB free space [except space for saving data files]	
Operating Environment	UB-T781W / T781 / T761	Temperature: 15°C to 35°C (59°F to 95°F) Humidity: 30 % to 80 %
	UB-T780 / T760	Temperature: 15°C to 30°C (59°F to 86°F) Humidity: 30 % to 80 %
Accessories		

Accessories

Operating instructions with installation manual, Power cord [3 m/10 ft.], Wall mounting plate, Electronic pen, Battery (LR03*AAA"), USB Cable [5 m/16 ft.], Penpoint, Software CD-ROM

*Dimensions and weights are approximate.

ISO 9001 Quality Management System

Our business processes which produce document, information and network products, from manufacturing to marketing, conform to ISO 9001 Quality Management Systems standard. Design, development, manufacture, installation, repair and maintenance of document, information and network products, their associated devices and consumables. In addition, the plants outside Japan have acquired ISO 9001 certification.

