



APC[™]

Schneider
Electric

Smart-UPS Ultra

Smaller, lighter and more power protection with 3x the battery life

The most trusted UPS brand brings you
the future of uninterruptible power

apc.com/smart-ups-ultra

Life Is On

Schneider
Electric

The world's most popular network and server UPS, now half the size and weight



APC Smart-UPS™ Ultra is the industry's first 1U 3kW UPS and smallest and lightest Lithium-ion 5kW UPS

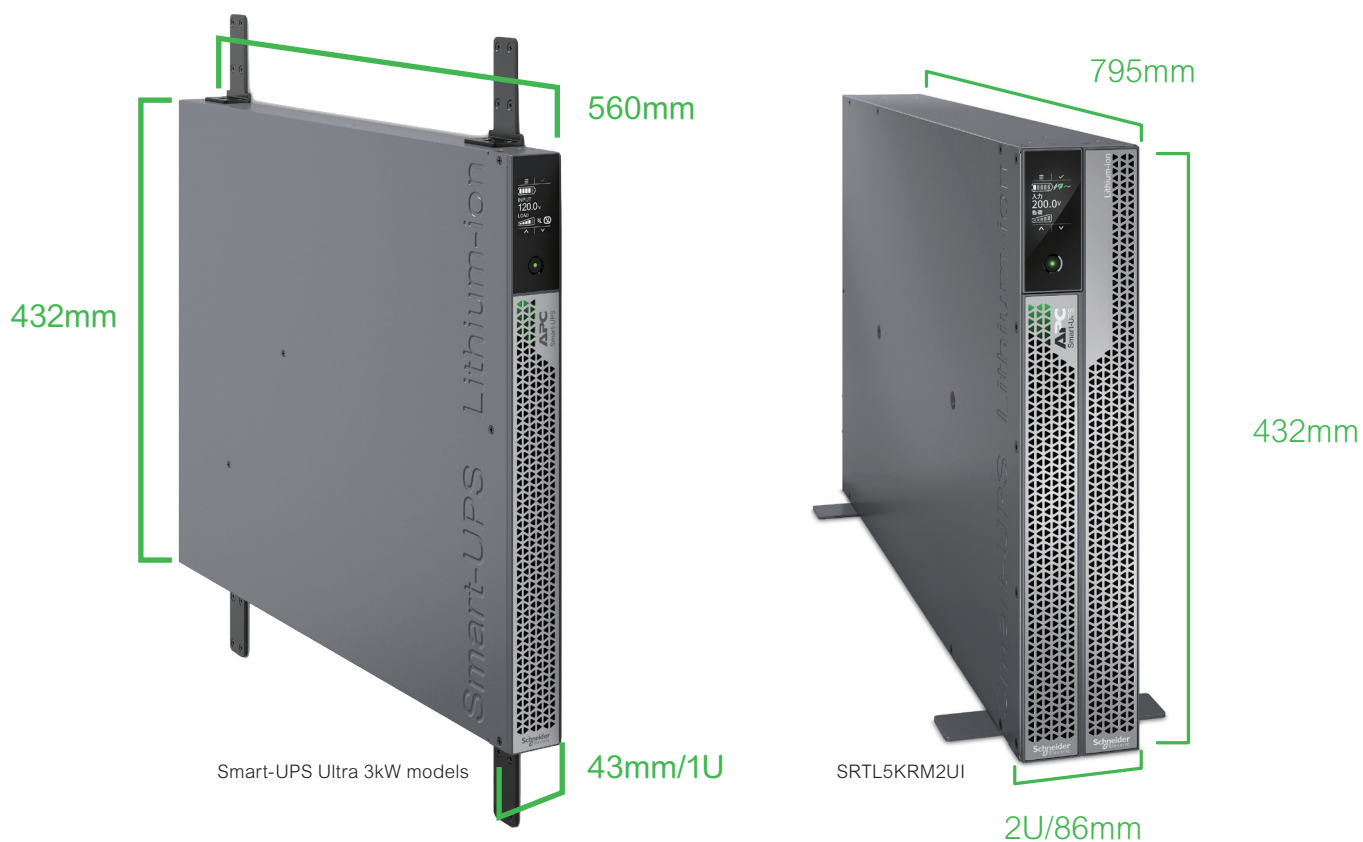
The world's most popular UPS is now available with a compact design and improved battery life. APC's Smart-UPS Ultra offers trusted, premium power protection to ensure network and data availability. Designed for local edge environments and micro data centers, the Smart-UPS Ultra provides consistent and reliable connectivity at the most critical moments. The UPS's light and compact size allow for installation on the wall or ceilings for top-tier flexibility. Increased UPS battery life and lower maintenance service costs provide a lower total cost of ownership over 10 years.

That's Certainty in a Connected World.

Installation flexibility, like never before

All-in-one mounting brackets for rack, tower, wall, ceiling and desk under mount*

With Smart-UPS™ Ultra you can put power protection in places never before possible. At half the size and weight of comparable UPS available on the market today, the mounting brackets can be used in any of the 4 mounting styles: rack, tower, wall and ceiling/ desk under mount. The auto-rotating touch screen display makes switching between horizontal and vertical mounting options instantaneous.



*wall, ceiling and desk under mount not available on SRTL5KRM2UI

Perfect for more installations

When your UPS gives you more power and takes up less space, you have more space for IT equipment

Fits in more applications than ever before

Due to its small size, Smart-UPS Ultra easily supports back office, network infrastructure and IDF/MDF closets. Install the UPS in out-of-the-way mounting options in small edge environments, retail or back offices.

With more power, Smart-UPS Ultra supports larger branch offices, financial institutions, grocery stores and light industrial manufacturing Healthcare installations such as hospitals, labs and remote clinics.



Delivers both power and extended runtime

Smart-UPS Ultra supplies up to 5000 Watts of power protection. With extended runtime options of up to 10 external battery packs, you can get the extended runtime you need for critical applications.



Predictable operational budget

Perfect for limited operational budgets such as Education and Government, UPS with Lithium-ion batteries can remove battery replacement costs up to 3 times! Smart-UPS Ultra batteries last 8-10 years, 3x that of lead acid (VRLA) batteries, which means that under normal operating conditions, the battery will last the life of the UPS.

Perfect for distributed IT

If you have more than one IT site to manage, Smart-UPS Ultra's EcoStruxure Ready remote monitoring and management options make owning a UPS easy, whether one UPS or a fleet of UPS. Remote management allows many tasks to be taken care of without stepping foot in your IT installation. Predictive monitoring and maintenance minimized trips to far-away IT sites.



Smart-UPS Ultra 2.2 & 3kW features

Half the size and weight, remote monitoring management and services with extended runtime options

50% smaller and lighter, 2.5x more power

Smaller & lighter gives you the flexibility to install anywhere: rack (2 post, 4 post), tower, wall, ceiling and desk under-mount options without compromising power protection needs

High resolution LCD

Auto-rotating display



3x the battery life

The Lithium-ion battery lasts 8-10 years (3x VRLA) and won't need to be replaced under normal operating condition, reducing Total Cost of Ownership

LED status indicator

At-a-glance indication of UPS Status

5 outlets in 1U

Including switched outlet group

NC Models



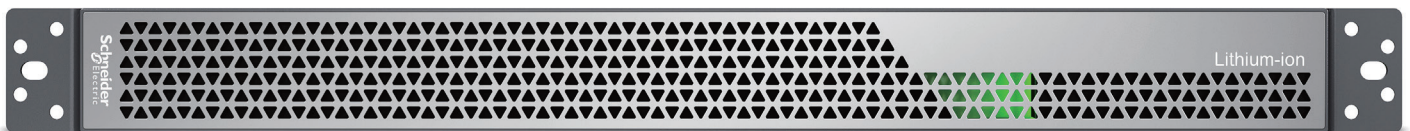
C Models

EcoStruxure Ready

Connect to either the Smart-UPS™ Portal or to EcoStruxure™ IT via the SmartConnect Ethernet Port or embedded network port

Extended Runtime options

Up to 5 external battery packs



SRTL50RMBP1U-LI

Smart-UPS Ultra features

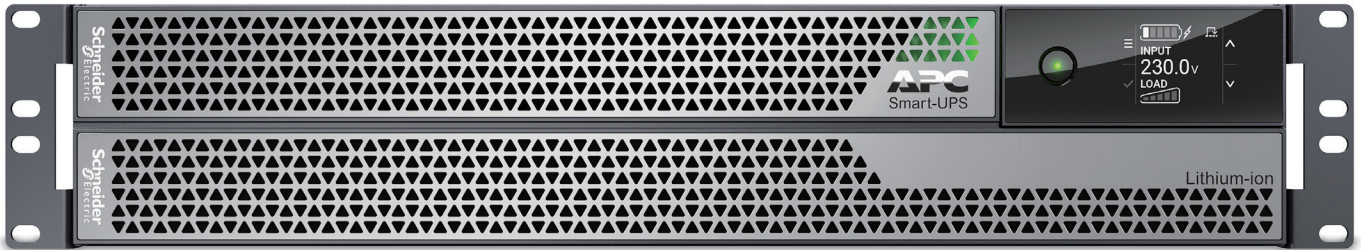
The smallest and lightest 5kW Lithium-ion UPS

30% smaller, 50% lighter, 1.5x more power

Next-gen semiconductor technology gives this UPS 1.5x more power in a 2U footprint.

High resolution LCD

Auto-rotating display with virtual touch keys

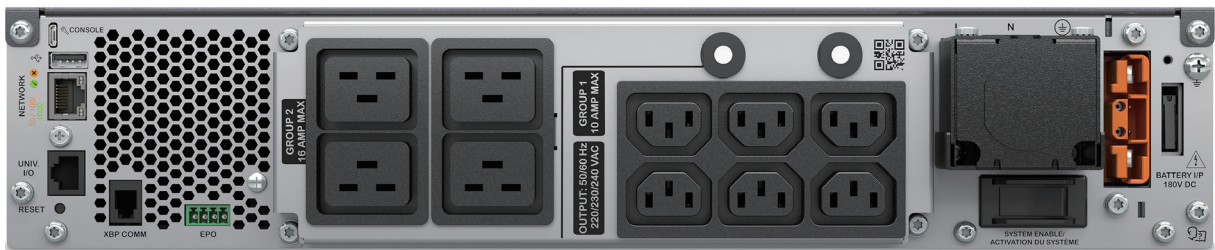


LED status indicator

At-a-glance indication of UPS Status

3x the battery life

The Lithium-ion battery lasts 8-10 years (3x VRLA) and won't need to be replaced under normal operating conditions, reducing Total Cost of Ownership

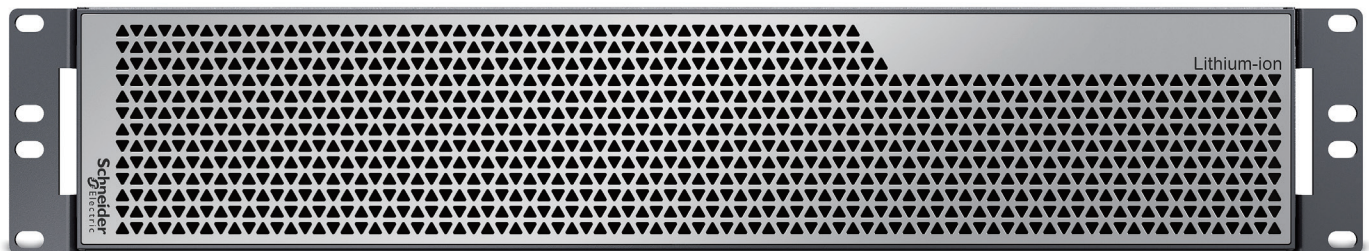


EcoStruxure Ready

Connect to EcoStruxure™ IT via the embedded network port

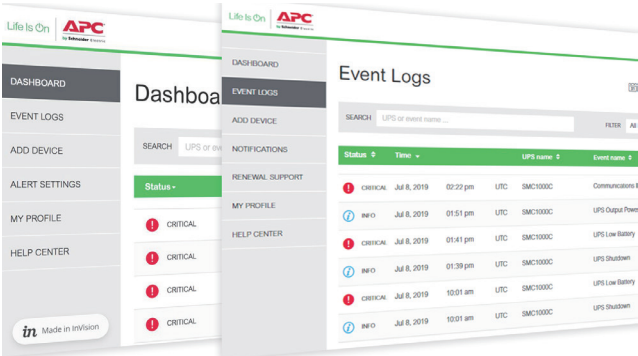
Extended Runtime options

Up to 10 external battery packs



EcoStruxure Ready Smart-UPS

Secure monitoring and UPS fleet management.

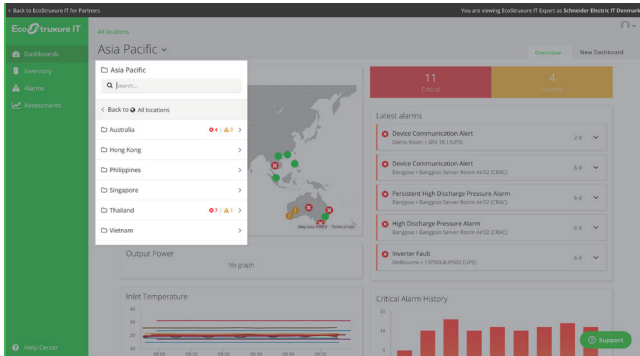


EcoStruxure Ready Smart-UPS

Smart-UPS Web Portal for remote monitoring

Provides visibility directly to the customer to help make proactive decisions and maximize uptime via the SmartConnect Ethernet Port.

Ideal for small and medium businesses who prefer to self-manage.

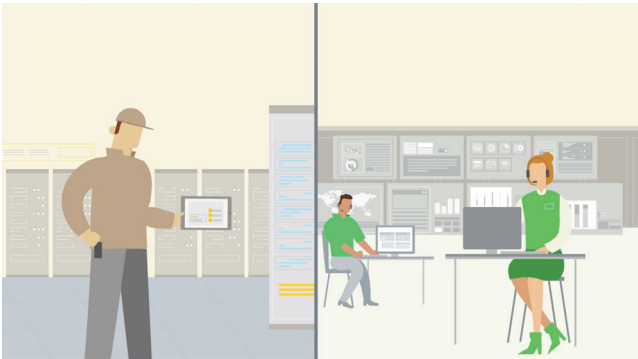


EcoStruxure IT Expert

The do-it-yourself advanced monitoring

We empower you to monitor and service customers on your own or provide EcoStruxure IT Expert to your customers who prefer a self-managed option.

Ideal for distributed IT sites and businesses with mixed IT environments.



EcoStruxure IT Asset Advisor

We advise, you maintain

We provide monitoring services, and you handle the maintenance. This option appeals most to partners who want to use their own on-site service.

Smart-UPS management solutions

Enable wireless communication

Save network ports by using WiFi Device

The APC USB Wi-Fi Device (AP9834) is a wireless communication accessory for network-based UPS management that replaces traditional wired network cabling allowing for:

- Faster installation
- Operational efficiency
- Reduced downstream costs
- Removal of cable clutter
- More deployment flexibility

Compatible with Smart-UPS Ultra NC models, Smart-UPS with Network Management Card 3 (AP9641, AP9643), pre-installed or embedded.



PowerChute Business Edition*

Built-in manageability for your UPS

Graceful system shutdown of connected equipment during an extended power outage or computer problem.

*not compatible with SRTL5KRM2UI



PowerChute Network Shutdown

Provides graceful network-based shutdown of physical and virtual IT architectures

Network-based, graceful, unattended shutdown and restart of your physical servers and virtual machines during prolonged power disturbances.

Smart-UPS 2.2 & 3kW accessories

UPS management accessories

- AP9834: APC USB Wi-Fi Device compatible with NC models
- AP9810: dry contact I/O accessory
- AP9335T & AP9335TH: sensor



AP9834

Service bypass panels

- SBP3000RMI: APC Service Bypass PDU, 230V 16AMP with (6) IEC C13 AND (1) C19



AP9562

External battery pack

- SRTL50RMBP1U-LI: 1U external battery pack



SRTL50RMBP1U-LI

Replacement battery cartridge

- APCRBC173-LI :APC Smart-UPS Ultra internal replacement battery cartridge for the Smart-UPS Ultra 1U UPS systems.

Smart-UPS 5kW accessories

UPS management accessories*

- AP9834: APC USB Wi-Fi Device
- AP9810: dry contact I/O accessory
- AP9335T & AP9335TH: sensor



AP9834

Battery packs:

- SRTL180RMBP2U: APC Smart-UPS Ultra On-Line Lithium ion XBP 180V 2U Rack/Tower



SRTL180RMBP2U

Rail kits:

- SRTRK2: APC Smart-UPS SRT 19 inch rail kit for Smart-UPS SRTL 5kW

Backplate kit/ Replaceable PDU's:

- SRTL002: APC Smart-UPS Ultra On-Line 5kVA OUTPUT Hardwire KIT
- SRTL003: APC Smart-UPS Ultra On-Line 5kVA OUTPUT IEC KIT

Service bypass panels:

- SBP5000RM12U: APC SERVICE BYPASS PANEL - 230V; 32A; BBM; IEC320 C20/HW INPUT; IEC-320 OUTPUT - (2) C19 (8) C13

Replacement battery cartridge

- SRYLBM: APC Smart-UPS Modular Ultra On-Line Lithium-ion Battery Module

Others

- SRTL006: APC Smart-UPS Ultra On-Line 15ft Extension Cable for SRTL 5K 180V XBP

PRELIMINARY SPECIFICATIONS

Smart-UPS Ultra

SKU technical specifications



	SRTL2K2RM1UIC	SRTL2K2RM1UINC	SRTL3KRM1UIC	SRTL3KRM1UINC
Topology	On-Line			
Output				
Output power capacity	2200VA/2200W		3000VA/3000W	
Nominal output voltage	220, 230 (default), 240V			
Output voltage distortion (with linear load)	2% at full load			
Output frequency (sync to mains)	50/60 Hz \pm 3 Hz (auto sense follow Input AC freq.) 50 or 60 \pm 1 Hz (battery mode)			
Waveform type	Sine Wave			
Output connections	(3) IEC 320 C13 (VDE approved) (2) IEC 320 C19 (VDE approved)	(3) IEC 320 C13 (VDE approved) (2) IEC 320 C19 (VDE approved)	(3) IEC 320 C13 (VDE approved) (2) IEC 320 C19 (VDE approved)	(3) IEC 320 C13 (VDE approved) (2) IEC 320 C19 (VDE approved)
Switched outlet group	Yes			
Efficiency green mode	97%			
Input				
Nominal input voltage	220, 230, 240V			
Input frequency	50/60Hz \pm 3Hz			
Input connections	IEC-60320 C20, Schuko CEE 7 / EU1-16P, British BS1363A			
Input voltage range for full load operation	160 ~ 275Vac		205 ~ 275Vac	
Batteries and runtime				
Battery type	Lithium-ion			
Runtime (Full Load / Half Load)	6 min / 14 min		4 min / 10 min	
External battery	SRTL50RMBP1U-LI (connect up to 5 external battery packs)			
Communications and management				
Interface port(s)	USB-B, RJ-45, Ethernet, EPO	USB-A, USB-B, Ethernet, Universal I/O, EPO	USB-B, RJ-45, Ethernet, EPO	USB-A, USB-B, Ethernet, Universal I/O, EPO
Network management	SmartConnect, Modbus over TCP/IP	Network Management Card Embedded	SmartConnect, Modbus over TCP/IP	Network Management Card Embedded
Control panel	Auto-rotating, multicolor high resolution LCD with virtual touch keys			
Physical				
Net HxWxD	43mm (1U) x 432mm x 560mm			
Net weight	14kg			
Environmental				
Operating environment	0 – 40 °C			
Operating elevation	0-3000 meters			
Storage temperature	-15 – 45 °C short term storage			
Storage relative humidity	0 – 95%, non-condensing			
Storage elevation	0-15000 meters			
Conformance				
Regulatory approvals	UPS: UL-1778 5th ed., CSA C22.2 No 107.3 2nd ed. (for Canada), FCC Part 15 Class A, ICES 003: Issue 7, IEC62040-1 2nd, IEC62040-2 2nd. Battery Pack and RBC: UL 1973, UL60730, IEC 62619, IEC 60730			
Standard warranty	5-Year UPS and batteries			

PRELIMINARY SPECIFICATIONS

Smart-UPS Ultra

SKU technical specifications



	SRTL2K2RM1UWC	SRTL2K2RM1UWNC	SRTL3KRM1UWC	SRTL3KRM1UWNC
Topology	On-Line			
Output				
Output power capacity	2200VA/2200W		3000VA/3000W	
Nominal output voltage	208, 220, 230 (default), 240V			
Output voltage distortion (with linear load)	2% at full load			
Output frequency (sync to mains)	50/60 Hz ± 3 Hz (auto sense follow Input AC freq.) 50 or 60 ± 1 Hz (battery mode)			
Waveform type	Sine Wave			
Output connections	(3) IEC 320 C13 (VDE approved) (2) IEC 320 C19 (VDE approved)	(3) IEC 320 C13 (VDE approved) (2) IEC 320 C19 (VDE approved)	(3) IEC 320 C13 (VDE approved) (2) IEC 320 C19 (VDE approved)	(3) IEC 320 C13 (VDE approved) (2) IEC 320 C19 (VDE approved)
Switched outlet group	Yes			
Efficiency green mode	97%			
Input				
Nominal input voltage	208 ~ 240V			
Input frequency	50/60Hz +/- 3Hz			
Input connections	IEC-60320 C20, Schuko CEE 7 / EU1-16P, British BS1363A			
Input voltage range for full load operation	160 ~ 275VAC		205 ~ 275VAC	
Batteries and runtime				
Battery type	Lithium-ion			
Runtime (Full Load / Half Load)	6 min / 14 min		4 min / 10 min	
External battery	SRTL50RMBP1U-LI (connect up to 5 external battery packs)			
Communications and management				
Interface port(s)	USB-B, RJ-45, Ethernet, EPO	USB-A, USB-B, Ethernet, Universal I/O, EPO	USB-B, RJ-45, Ethernet, EPO	USB-A, USB-B, Ethernet, Universal I/O, EPO
Network management	SmartConnect, Modbus over TCP/IP	Network Management Card Embedded	SmartConnect, Modbus over TCP/IP	Network Management Card Embedded
Control panel	Auto-rotating, multicolor high resolution LCD with virtual touch keys			
Physical				
Net HxWxD	43mm (1U) x 432mm x 560mm			
Net weight	14kg			
Environmental				
Operating environment	0 – 40 °C			
Operating elevation	0-3000 meters			
Storage temperature	-15 – 45 °C short term storage			
Storage relative humidity	0 – 95%, non-condensing			
Storage elevation	0-15000 meters			
Conformance				
Regulatory approvals	UPS: UL-1778 5th ed., CSA C22.2 No 107.3 2nd ed. (for Canada), FCC Part 15 Class A, ICES 003: Issue 7, IEC62040-1 2nd, IEC62040-2 2nd. Battery Pack and RBC: UL 1973, UL60730, IEC 62619, IEC 60730			
Standard warranty	5-Year UPS and batteries			

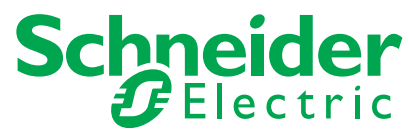
Smart-UPS Ultra



SKU technical specifications

SRTL5KRM2UI	
Topology	On-Line
Output	
Output power capacity	5000VA/5000W
Nominal output voltage	220V, 230V, 240V
Output voltage distortion	(Full R Load) 1%
Output frequency	50/60Hz ± 3Hz (auto sense), 50/60Hz ± 0.1Hz user selectable 50/60Hz ± 3 Hz user selectable
Waveform type	Sine Wave
Output connections	(6) IEC 320 C13 (VDE approved) - Thermal CB 10A, (4) IEC 320 C19 (VDE approved) - Thermal CB 15A
Efficiency green mode	98.5%
Input	
Nominal input voltage	220V, 230V, 240V
Input frequency	40 - 70Hz
Input connections	Hardwired
Input voltage range for full load operation	187 ~ 275 V (±5V)
Batteries and runtime	
Battery type	Lithium-ion
Runtime (5000W/2500W)	5 min / 12 min
External battery	SRTL180RMBP2U (connect up to 10 external battery packs)
Communications and management	
Interface port(s)	USB-A, Ethernet, Universal I/O, EPO
Network management	Network Management Card Embedded
Control panel	Auto-rotating, multicolor high resolution LCD with virtual touch keys
Physical	
Net HxWxD	86mm (2U) x 432mm x 795mm (after cable gland)
Net weight	60lbs (27.2kg)
Environmental	
Operating environment	0 – 40 °C (32 – 104 °F)
Operating elevation	0-3000 meters (0-10000 feet)
Storage temperature	-15 – 45 °C (5 – 113 °F) short term storage
Storage relative humidity	0 – 95%, non-condensing
Storage elevation	0-15000 meters (0-50000 feet)
Conformance	
Regulatory approvals	UPS: EN/IEC 62040-1, VDE, CE, UKCA, IEC 62040-2 / EN IEC 62040-2 Battery Pack and RBC: EN/IEC 62040-1, IEC 62619, UN 38.3, CE, UKCA Electronic circuits and software controls in the battery pack are evaluated as per IEC 60730-1
Standard warranty	5-Year UPS and batteries

Life Is On



Learn more today!

apc.com/smart-ups-ultra

Schneider Electric

Schneider Electric
35 rue Joseph Monier
92500 Rueil-Malmaison, France
Phone: + 33 (0)1 41 29 70 00

December 2022

©2022 Schneider Electric. All Rights Reserved.
Schneider Electric | Life Is On is a trademark and the property of Schneider Electric SE, its subsidiaries, and affiliated companies.
• 998-21912450_GMA-A4



This document has been printed on recycled paper

