

ISOMETRIC VIEW

NOTES:

1. INSTALLATION SHALL COMPLY WITH ALL APPLICABLE NATIONAL AND LOCAL ELECTRICAL REGULATIONS.
2. REFER TO PRODUCT MANUALS FOR ADDITIONAL DETAILS PRIOR TO INSTALLATION AND SITE PREPARATION WORK.

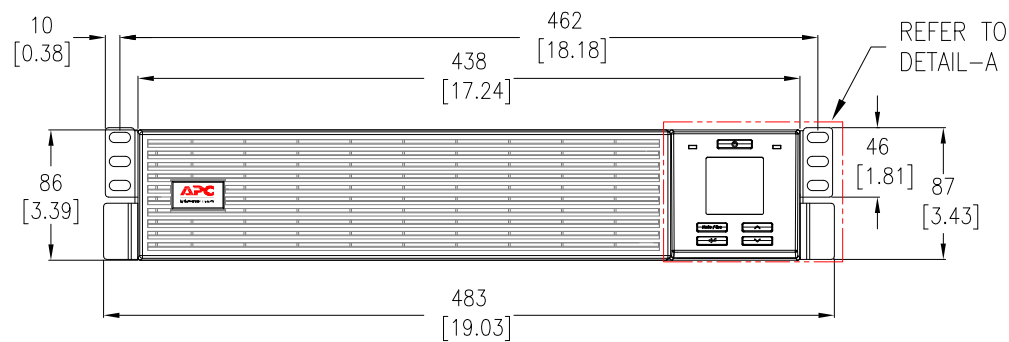
THIS DRAWING AND SPECIFICATIONS HEREIN ARE THE PROPERTY OF SCHNEIDER ELECTRIC AND SHALL NOT BE COPIED, REPRODUCED OR USED IN WHOLE OR IN PART, AS THE BASIS FOR THE MANUFACTURE OR SALE OF ITEMS WITHOUT WRITTEN PERMISSION FROM SCHNEIDER ELECTRIC. THIS DRAWING IS BASED UPON LATEST AVAILABLE INFORMATION AND IS SUBJECT TO CHANGE WITHOUT NOTICE.

Schneider
Electric

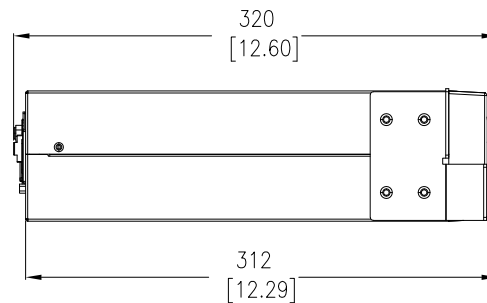
TITLE: APC Easy UPS On-Line SRV
(1000VA/900W, WITH INTERNAL BATTERY)
INPUT: 230VAC (L+N+G), 40-70Hz
OUTPUT: 230VAC (L+N+G), 50/60Hz
ISOMETRIC VIEWS

PROJECT: SUBMITTAL DRAWING SHEET 1 OF 3

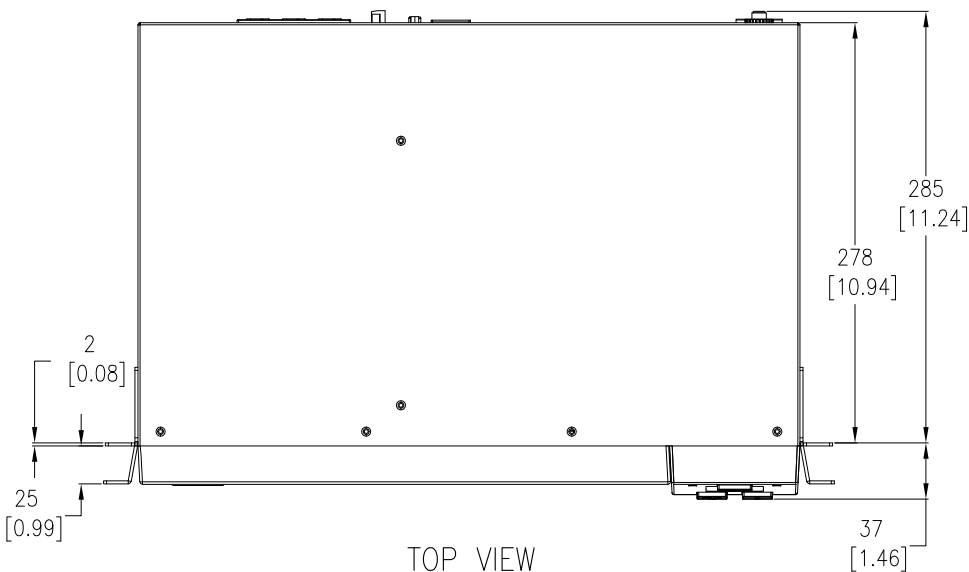
DWG NO:	SRV1KRI-E	REV.	0
DRAWN:	RANJITHA	21-SEP-21	FIRST
ENGINEER:	ASHOK	27-SEP-21	ANGLE
APPROVED:	M LIPARE	27-SEP-21	PROJECTION



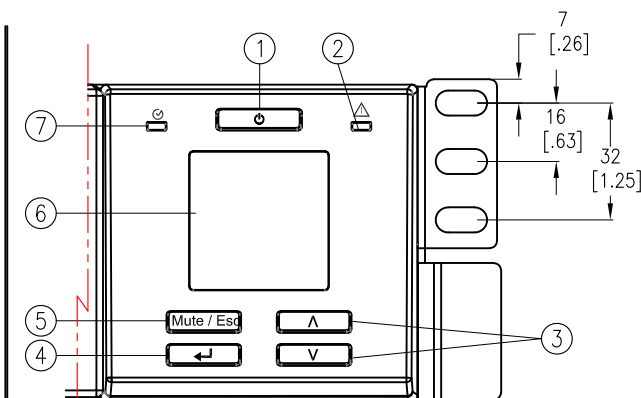
FRONT VIEW



SIDE VIEW

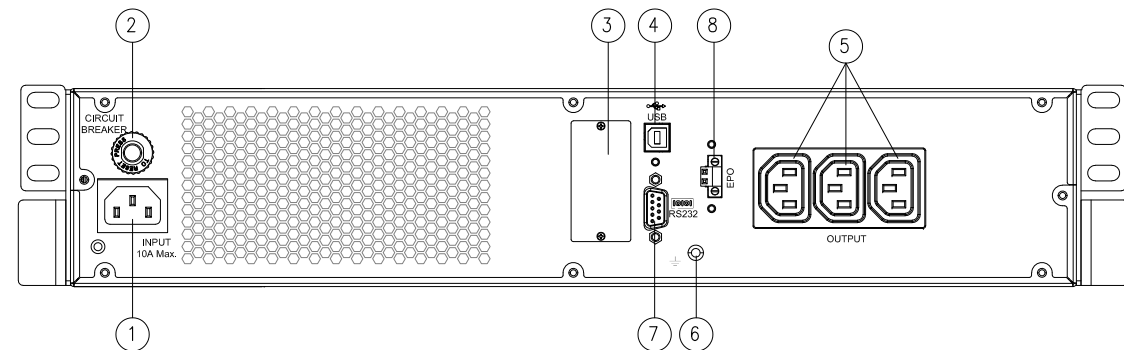


TOP VIEW



DETAIL-A, DISPLAY PANEL
(ENLARGED VIEW)

1. Power ON/OFF button.
2. Alert LED
3. UP/DOWN arrow buttons.
4. ENTER button.
5. Mute/ESC button.
6. LCD Display.
7. Status LED



REAR VIEW (ENLARGED)

- ① IEC C14 AC INPUT SOCKET
- ② INPUT CIRCUIT BREAKER
- ③ INTELLIGENT CARD SLOT
- ④ USB COMMUNICATION PORT
- ⑤ IEC C13 OUTPUT SOCKET
- ⑥ GROUND SCREW
- ⑦ RS-232 SERIAL PORT
- ⑧ EMERGENCY POWER OFF (EPO)

NOTES:

1. INSTALLATION SHALL COMPLY WITH ALL APPLICABLE NATIONAL AND LOCAL ELECTRICAL REGULATIONS.
2. REFER TO PRODUCT MANUALS FOR ADDITIONAL DETAILS PRIOR TO INSTALLATION AND SITE PREPARATION WORK.
3. ALL DIMENSIONS ARE IN MILLIMETERS [INCHES]
4. CABLE ENTRY/EXIT IS FROM REAR SIDE OF UNIT.
5. NET WEIGHT OF THE UNIT IS 11.5 kg [25.35 lbs].

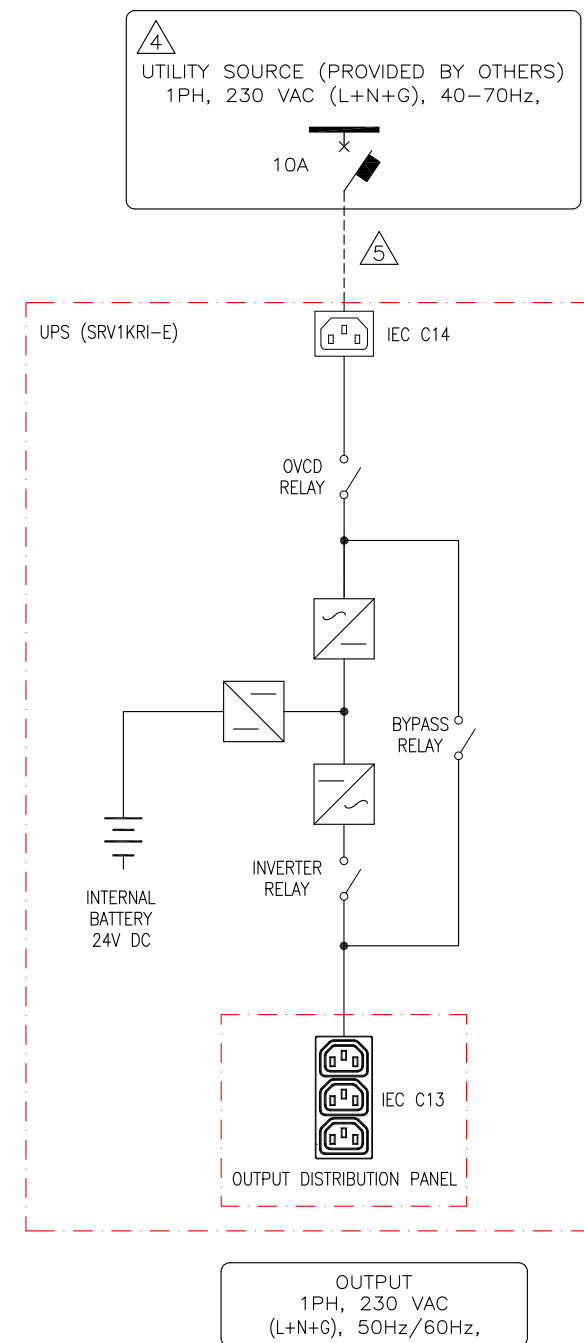
THIS DRAWING AND SPECIFICATIONS HEREIN ARE THE PROPERTY OF SCHNEIDER ELECTRIC AND SHALL NOT BE COPIED, REPRODUCED OR USED IN WHOLE OR IN PART, AS THE BASIS FOR THE MANUFACTURE OR SALE OF ITEMS WITHOUT WRITTEN PERMISSION FROM SCHNEIDER ELECTRIC. THIS DRAWING IS BASED UPON LATEST AVAILABLE INFORMATION AND IS SUBJECT TO CHANGE WITHOUT NOTICE.

Schneider Electric

TITLE: APC Easy UPS On-Line SRV
(1000VA/900W, WITH INTERNAL BATTERY)
INPUT: 230VAC (L+N+G), 40-70Hz
OUTPUT: 230VAC (L+N+G), 50/60Hz
GENERAL ARRANGEMENT

PROJECT: SUBMITTAL DRAWING SHEET 2 OF 3

DWG NO:	SRV1KRI-E	REV:	0
DRAWN:	RANJITHA	21-SEP-21	FIRST
ENGINEER:	ASHOK	27-SEP-21	ANGLE
APPROVED:	M LIPARE	27-SEP-21	PROJECTION



NOTES:

1. INSTALLATION SHALL COMPLY WITH ALL APPLICABLE NATIONAL AND LOCAL ELECTRICAL REGULATIONS.
2. REFER TO PRODUCT DOCUMENTATION FOR ADDITIONAL DETAILS PRIOR TO INSTALLATION AND SITE PREPARATION WORK.
3. DRAWING DEPICTS POWER SYSTEM CONNECTIONS AND IS NOT REPRESENTATIVE OF PHYSICAL LAYOUT. PLEASE REFER TO MECHANICAL DRAWINGS FOR MORE SPECIFIC PHYSICAL DATA.
- △ 4. UTILITY SOURCE MUST BE 1PH, 230VAC (L+N+G), 40–70Hz PROVIDED BY OTHERS.
- △ 5. DASHED LINES BETWEEN UTILITY SOURCE & THE UNIT REPRESENTS POWER CORD PROVIDED WITH THE UNIT.
6. BATTERY TYPE: 12V, 9Ah, SEALED MAINTENANCE FREE, VRLA INTERNAL BATTERY. BATTERY VOLTAGE: 24VDC.
7. INPUT POWER FACTOR IS 0.9 AT NOMINAL INPUT VOLTAGE AND FULL R LOAD. OUTPUT V_{THD} 3% MAX FOR FULL LINEAR LOAD, 6% MAX FOR FULL NON LINEAR LOAD.

THIS DRAWING AND SPECIFICATIONS HEREIN ARE THE PROPERTY OF SCHNEIDER ELECTRIC AND SHALL NOT BE COPIED, REPRODUCED OR USED IN WHOLE OR IN PART, AS THE BASIS FOR THE MANUFACTURE OR SALE OF ITEMS WITHOUT WRITTEN PERMISSION FROM SCHNEIDER ELECTRIC. THIS DRAWING IS BASED UPON LATEST AVAILABLE INFORMATION AND IS SUBJECT TO CHANGE WITHOUT NOTICE.

Schneider Electric

TITLE: APC Easy UPS On-Line SRV
(1000VA/900W, WITH INTERNAL BATTERY)
INPUT: 230VAC (L+N+G), 40–70Hz
OUTPUT: 230VAC (L+N+G), 50/60Hz
SYSTEM ONE-LINE DIAGRAM

PROJECT: SUBMITTAL DRAWING SHEET 3 OF 3

DWG NO: SRV1KRI-E

DRAWN: RANJITHA 21-SEP-21

ENGINEER: ASHOK 27-SEP-21

APPROVED: M LIPARE 27-SEP-21

REV. 0

ANGLE

PROJECTION

N/A