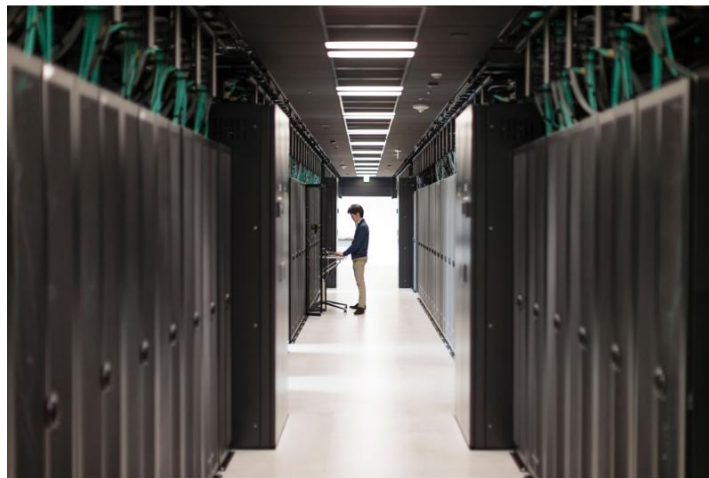


Aruba 6200M 24G 4SFP+ Switch (R8Q67A)

Fixed Port L3 Managed Ethernet Switches



What's new

- Enterprise-class connectivity with support for ACLs, robust QoS, and common protocols such as static and Access OSPF routing.
- Scalability with 8 member VSF stacking. 24 and 48-port fixed and modular switch models can stack together for up to 384 ports.
- Convenient 1/10GbE uplinks with LRM and MACSec 256 on modular switches.

Overview

The Aruba CX 6200 Switch Series is a next-gen family of stackable access switches ideal for enterprise branch offices, campuses, and SMB networks. With a cloud-centric design that combines a fully programmable OS with the Aruba Network Analytics Engine, the Aruba CX 6200 extends industry-leading monitoring and troubleshooting capabilities to the access layer. Support of Aruba NetEdit and the Aruba CX Mobile App verify that configurations are flawless and easy to deploy.

Offers 740W (Class 4) to 1440W (Class 6) of PoE with intelligent monitoring and visibility via Aruba Network Analytics Engine.

- Aruba NetEdit support for automation, configuration and verification, and one touch deployment with the Aruba CX Mobile App.
- Aruba Dynamic Segmentation enables enhanced security and simple access for users and IoT.
- Flexible, modular switch models support hot-swappable, redundant power supplies and fans for enhanced resiliency.

Make your network ready for tomorrow's unpredictable demands with a powerful Aruba Gen7 ASIC architecture to deliver fast, non-blocking performance. Aruba Virtual Stacking Framework (VSF) allows for stacking of up to 8 switches, providing scale and simplified management. This series includes fixed (CX 6200F) and modular (CX 6200M) switches with built-in high speed uplinks and up to 1440W of PoE to support IoT devices such as security cameras and wireless APs.

Features

Automation and Analytics

The Aruba CX 6200 Switch Series delivers unparalleled visibility with built-in analytics for real-time monitoring and troubleshooting to help fix problems faster. The Aruba Network Analytics Engine (NAE) automatically interrogates and analyzes events that can impact network health.

Advanced telemetry and automation provide the ability to easily identify and troubleshoot network, system, application, and security related issues easily through the use of Python agents and REST APIs.

The Time Series Database (TSDB) stores configuration and operational state data, making it available to quickly resolve network issues.

Aruba NetEdit introduces automation that allows for rapid network-wide changes, and ensures policy conformance post network updates. Intelligent capabilities include search, edit, validation (including conformance checking), deployment, and audit features.

The Aruba CX Mobile App simplifies connecting, stacking, and managing Aruba CX 6200 switches. Switch information can be imported into Aruba NetEdit for simplified configuration management and to continuously validate the conformance of configurations anywhere in the network.

Performance and Power

The Aruba CX 6200 Switch Series uses a fully distributed architecture with Aruba Gen7 ASICs that delivers very low latency, increased packet buffering, and adaptive power consumption. All switching and routing are wire-speed to meet the demands of bandwidth-intensive applications.

Aruba Virtual Switching Framework (VSF) allows you to quickly grow your network using high performance front-plane stacking. Create 8 member stacks using built-in SFP+ ports with flexibility to create stacks that span longer distances using long-range transceivers.

Deploy wireless access points and IoT devices with Aruba CX 6200 models that support up to 1440W IEEE 802.3at Class 6 Power over Ethernet for up to 60W per port.

Flexible, modular switch models support hot-swappable, redundant power supplies and fans for enhanced resiliency.

Smarter Segmentation

The Aruba CX 6200 Switch Series supports Aruba Dynamic Segmentation that automatically applies and enforces user, device, and application-aware policies on Aruba wired and wireless infrastructures.

Automated device profiling, role-based access control, and Layer 7 firewall features deliver enhanced visibility and performance for a better overall

experience for both IT and end-users alike.

Switch-to-switch tunnels with VXLAN for low-latency and high performance use cases.

Technical specifications

Aruba 6200M 24G 4SFP+ Switch

Product Number	R8Q67A
Ports	24x ports 10/100/1000BASE-T Ports 4x 1G/10G SFP ports (2x LRM; 2x LRM/MACSec 256) 1x RJ-45 Console Port 1x USB-C Console Port 1x OOBM 1x USB Type-A Host port
Memory and processor	Quad Core ARM Cortex™ A72 @ 1.8 GHz
Latency	1 Gbps: 2.28 µSec 10 Gbps: 1.46 µSec
Throughput	Up to 95.2 Mpps
Routing/switching capacity	128 Gbps
Stacking capabilities	8 members
Power supply name	2 field-replaceable, hotswappable power supply slots 1 minimum power supply required (ordered separately) Supports JL085A PSU
Input voltage	100V-120V/200V-240V
Power Consumption	75W at 230 VAC
Product Dimensions (metric)	4.39 x 44.247 x 38.38 cm
Weight	6.01 kg
Warranty	Limited Lifetime Warranty, see https://www.arubanetworks.com/support-services/product-warranties/ for warranty and support information included with your product purchase.

For additional technical information, available models and options, please reference the [QuickSpecs](#)

Aruba Global Services

Aruba Global Services simplifies and accelerates the network technology lifecycle, enabling your network to scale with better predictability and cost-effectiveness. Whether you operate your own network and need to improve your IT efficiencies or you want to offload some of the burden, we have the services you need to reach your goals.

Learn more about what Aruba Global Services has to offer at: arubanetworks.com/services/



Support Services from Aruba

Support services reduce complexity and increase your team's productivity, ensuring you keep pace with technology advances and software releases, and obtain break-fix support required to keep your network running. Access to premium services means you have the right help at the right time.

Professional Services from Aruba

With deep intellectual capital and purpose-built tools, our team delivers a range of standard and custom professional services designed to accelerate your value from Aruba technology.

QuickStart Services include:

- Planning, audit and assessment
- Architecture review and design
- Deployment, migration, and knowledge transfer

Proactive Engineering Services include:

- Intelligent Operations
- Customer Experience Management
- Network optimization

Our [Education Services](#) allow your team to come up to speed quickly.

Aruba Network as-a-Service (NaaS)

Our NaaS solution, Aruba Managed Connectivity Services, part of the HPE GreenLake services family, simplifies network operations, accelerates equipment handling, and increases the value of your Aruba network. If you need expert guidance and automation-based operations for your team, please explore the NaaS approach from Aruba [here](#).

Make the right purchase decision.
Contact our presales specialists.

[Find a partner](#)



Chat now (sales)



Call now



Buy now



Share now



Get updates

aruba
a Hewlett Packard
Enterprise company

© Copyright 2023 Hewlett Packard Enterprise Development LP. The information contained herein is subject to change without notice. The only warranties for Hewlett Packard Enterprise products and services are set forth in the express warranty statements accompanying such products and services. Nothing herein should be construed as constituting an additional warranty. Hewlett Packard Enterprise shall not be liable for technical or editorial errors or omissions contained herein.

Parts and Materials: HPE will provide HPE-supported replacement parts and materials required to maintain the covered hardware.

Parts and components that have reached their maximum supported lifetime and/or the maximum usage limitations as set forth in the manufacturer's operating manual, product quick-specs, or the technical product data sheet will not be provided, repaired, or replaced as part of these services.

Image may differ from the actual product
[PSN1014708935USEN](#), February, 2023.