

**ZEBRA**

# **WS50 WEARABLE COMPUTER ACCESSORIES GUIDE**

Revised Dec 12, 2023





# WS50 Camera Assembly



WS50 Core with two-inch color AMOLED touch display and 13 megapixel camera

Battery 800mAh

Wrist Mount

Replaceable Protective Shell with four programable buttons

Wrist Strap: Large and Small (Must be purchased separately)





# WS50 Scan Spare Battery and Charger

## Spare 1300mAh Li-ion Battery

### BTRY-WS5X-13MA-01

PowerPrecision Spare Lithium-Ion battery, 1300mAh, for WS50 Scan



## WS50 Scan, Four Slot Spare Battery Charger

**SAC-WS5X-4S13-01:** WS50 Scan four slot spare battery charger, charges four 1300mAh batteries. LEDs on the cradle indicate charge status of each battery.

## Power supply for single cradle



### PWR-BGA12V50W0WW

Level VI AC/DC Power Supply

**AC Input:** 100-240V, 2.4A

**DC Output:** 12V, 4.16A, 50W

**Requires:** DC line cord and Country specific grounded AC line cord.



### CBL-DC-388A1-01

DC Line Cord for running the single slot cradles or battery chargers from a single Level VI power supply PWR-BGA12V50W0WW



### 23844-00-00R

US AC line cord, 7.5 feet long, grounded, three wire for power supplies.

## Charging LED indicators

Off	Battery not charging
Solid Amber	Healthy battery charging
Solid Green	Healthy battery charging complete
Fast Blink Red	Charging error
Solid Red	Unhealthy battery



## Spare 800mAh Li-ion Battery

### BTRY-WS5X-8MA-01

PowerPrecision Spare Lithium-Ion battery, 800mAh, for WS50 Camera



## WS50 Camera, Four Slot Spare Battery Charger

**SAC-WS5X-4S8-01:** WS50 Camera four slot spare battery charger, charges four 800mAh batteries. LEDs on the cradle indicate charge status of each battery.

## Power supply for single cradle



### PWR-BGA12V50W0WW

Level VI AC/DC Power Supply

**AC Input:** 100-240V, 2.4A

**DC Output:** 12V, 4.16A, 50W

**Requires:** DC line cord and Country specific grounded AC line cord.



### CBL-DC-388A1-01

DC Line Cord for running the single slot cradles or battery chargers from a single Level VI power supply PWR-BGA12V50W0WW



### 23844-00-00R

US AC line cord, 7.5 feet long, grounded, three wire for power supplies.

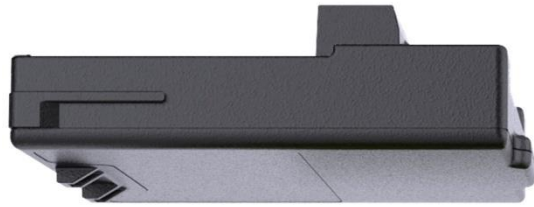
## Charging LED indicators

Off	Battery not charging
Solid Amber	Healthy battery charging
Solid Green	Healthy battery charging complete
Fast Blink Red	Charging error
Solid Red	Unhealthy battery

## Spare 1300mAh Li-ion Battery

### BTRY-WS5X-24MA-01

PowerPrecision Spare Lithium-Ion battery, 2400mAh, for WS50 Scan



## WS50 RFID, Four Slot Spare Battery Charger

**SAC-WS5X-4S24-01:** WS50 RFID four slot spare battery charger, charges four 2400mAh batteries. LEDs on the cradle indicate charge status of each battery.



## Power supply for single cradle



### PWR-BGA12V50W0WW

Level VI AC/DC Power Supply

**AC Input:** 100-240V, 2.4A

**DC Output:** 12V, 4.16A, 50W

**Requires:** DC line cord and Country specific grounded AC line cord.



### CBL-DC-388A1-01

DC Line Cord for running the single slot cradles or battery chargers from a single Level VI power supply PWR-BGA12V50W0WW



### 23844-00-00R

US AC line cord, 7.5 feet long, grounded, three wire for power supplies.

## Charging LED indicators

Off	Battery not charging
Solid Amber	Healthy battery charging
Solid Green	Healthy battery charging complete
Fast Blink Red	Charging error
Solid Red	Unhealthy battery



# WS50 Scan Single Charging Cradle

## WS50 Scan, Two Slot Device Cradle

**CRD-WS5X-2SCV-01:** Two slot charge-only cradle, charges two WS50 Scan devices. LED near the top of the WS50 display indicates charge status of each device. “Stadium” positioning enables viewability of the display on the rear device while a device is placed in the front slot.



## Power supply for single cradle



### PWR-BGA12V50W0WW

Level VI AC/DC Power Supply

**AC Input:** 100-240V, 2.4A

**DC Output:** 12V, 4.16A, 50W

**Requires:** DC line cord and Country specific grounded AC line cord.



### CBL-DC-388A1-01

DC Line Cord for running the single slot cradles or battery chargers from a single Level VI power supply PWR-BGA12V50W0WW



### 23844-00-00R

US AC line cord, 7.5 feet long, grounded, three wire for power supplies.

## Charging LED indicators

Off	Battery not charging
Solid Amber	Healthy battery charging
Solid Green	Healthy battery charging complete
Fast Blink Red	Charging error
Solid Red	Unhealthy battery





# WS50 Camera Single Charging Cradle

## WS50 Camera, Two Slot Device Cradle

**CRD-WS5X-2SWR-01:** Two slot charge-only cradle, charges two WS50 Camera devices. LED near the top of the WS50 display indicates charge status of each device. “Stadium” positioning enables viewability of the display on the rear device while a device is placed in the front slot.



## Power supply for single cradle



### PWR-BGA12V50W0WW

Level VI AC/DC Power Supply

**AC Input:** 100-240V, 2.4A

**DC Output:** 12V, 4.16A, 50W

**Requires:** DC line cord and Country specific grounded AC line cord.



### CBL-DC-388A1-01

DC Line Cord for running the single slot cradles or battery chargers from a single Level VI power supply PWR-BGA12V50W0WW



### 23844-00-00R

US AC line cord, 7.5 feet long, grounded, three wire for power supplies.

## Charging LED indicators

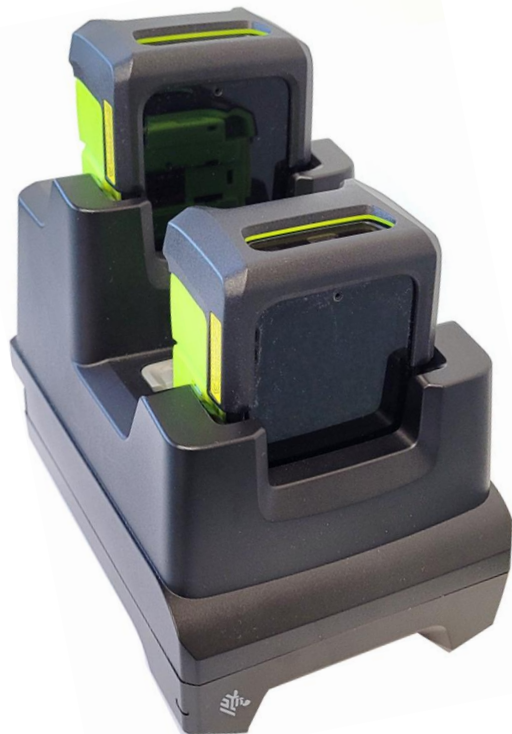
Off	Battery not charging
Solid Amber	Healthy battery charging
Solid Green	Healthy battery charging complete
Fast Blink Red	Charging error
Solid Red	Unhealthy battery



# WS50 RFID Single Charging Cradle

## WS50 RFID, Two Slot Device Cradle

**CRD-WS5X-2SRD-01:** Two slot charge-only cradle, charges two WS50 RFID devices. LED near the top of the WS50 display indicates charge status of each device. “Stadium” positioning enables viewability of the display on the rear device while a device is placed in the front slot.



## Power supply for single cradle



### PWR-BGA12V50W0WW

Level VI AC/DC Power Supply

**AC Input:** 100-240V, 2.4A

**DC Output:** 12V, 4.16A, 50W

**Requires:** DC line cord and Country specific grounded AC line cord.



### CBL-DC-388A1-01

DC Line Cord for running the single slot cradles or battery chargers from a single Level VI power supply PWR-BGA12V50W0WW



### 23844-00-00R

US AC line cord, 7.5 feet long, grounded, three wire for power supplies.

## Charging LED indicators

Off	Battery not charging
Solid Amber	Healthy battery charging
Solid Green	Healthy battery charging complete
Fast Blink Red	Charging error
Solid Red	Unhealthy battery



# WS50 Scan Multi-Slot Device Cradle

## WS50 Scan, 10 Slot Device Cradle

**CRD-WS5X-10SCV-01:** Ten slot charge-only cradle, charges ten WS50 Scan devices. LED near the top of the WS50 display indicate charge status of each device.



## Power supply for multi-slot cradle



### **PWR-BGA12V108W0WW**

Level VI AC/DC Power Supply

**AC Input:** 100-240V, 2.8A

**DC Output:** 12V, 9A, 108W .



### **CBL-DC-381A1-01**

DC Line Cord for running multi-slot cradles from a single Level VI power supply PWR-BGA12V108W0WW



### **23844-00-00R**

US AC line cord, 7.5 feet long, grounded, three wire for power supplies.



### **BRKT-SCRD-SMRK-01**

Rack/Wall Mounting bracket for multi-slot cradles.

## Charging LED indicators

Off	Battery not charging
Solid Amber	Healthy battery charging
Solid Green	Healthy battery charging complete
Fast Blink Red	Charging error
Solid Red	Unhealthy battery



# WS50 Camera Multi-Slot Device Cradle

## WS50 Camera, 10 Slot Device Cradle

**CRD-WS5X-10SWR-01:** Ten slot charge-only cradle, charges ten WS50 Camera devices. LED near the top of the WS50 display indicates charge status of each device.



## Power supply for multi-slot cradle



### **PWR-BGA12V108W0WW**

Level VI AC/DC Power Supply  
**AC Input:** 100-240V, 2.8A  
**DC Output:** 12V, 9A, 108W .



### **CBL-DC-381A1-01**

DC Line Cord for running multi-slot cradles from a single Level VI power supply PWR-BGA12V108W0WW



### **23844-00-00R**

US AC line cord, 7.5 feet long, grounded, three wire for power supplies.



### **BRKT-SCRD-SMRK-01**

Rack/Wall Mounting bracket for multi-slot cradles.

## Charging LED indicators

Off	Battery not charging
Solid Amber	Healthy battery charging
Solid Green	Healthy battery charging complete
Fast Blink Red	Charging error
Solid Red	Unhealthy battery





# WS50 RFID Multi-Slot Device Cradle

## WS50 RFID, 10 Slot Device Cradle

**CRD-WS5X-10SRD-01:** Ten slot charge-only cradle, charges ten WS50 RFID devices. LED near the top of the WS50 display indicate charge status of each device.



### Power supply for multi-slot cradle



#### **PWR-BGA12V108W0WW**

Level VI AC/DC Power Supply  
**AC Input:** 100-240V, 2.8A  
**DC Output:** 12V, 9A, 108W .



#### **CBL-DC-381A1-01**

DC Line Cord for running multi-slot cradles from a single Level VI power supply PWR-BGA12V108W0WW



#### **23844-00-00R**

US AC line cord, 7.5 feet long, grounded, three wire for power supplies.



#### **BRKT-SCRD-SMRK-01**

Rack/Wall Mounting bracket for multi-slot cradles.

### Charging LED indicators

Off	Battery not charging
Solid Amber	Healthy battery charging
Solid Green	Healthy battery charging complete
Fast Blink Red	Charging error
Solid Red	Unhealthy battery





# WS50 Scan Multi-Slot Battery Charger

## WS50 Scan, 20 Slot Spare Battery Charger

**SAC-WS5X-20S13-01:** WS50 Scan twenty slot spare battery charger, charges twenty 1300mAh batteries. LEDs on the cradle indicate charge status of each battery.



### Power supply for multi-slot cradle



#### **PWR-BGA12V108W0WW**

Level VI AC/DC Power Supply  
**AC Input:** 100-240V, 2.8A  
**DC Output:** 12V, 9A, 108W .



#### **CBL-DC-381A1-01**

DC Line Cord for running multi-slot cradles from a single Level VI power supply PWR-BGA12V108W0WW



#### **23844-00-00R**

US AC line cord, 7.5 feet long, grounded, three wire for power supplies.



#### **BRKT-SCRD-SMRK-01**

Rack/Wall Mounting bracket for multi-slot cradles.

### Charging LED indicators

Off	Battery not charging
Solid Amber	Healthy battery charging
Solid Green	Healthy battery charging complete
Fast Blink Red	Charging error
Solid Red	Unhealthy battery



# WS50 Camera Multi-Slot Battery Charger

## WS50 Camera, 20 Slot Spare Battery Charger

**SAC-WS5X-20S8-01:** WS50 Camera twenty slot spare battery charger, charges twenty 800mAh batteries. LEDs on the cradle indicate charge status of each battery.



### Power supply for multi-slot cradle



#### **PWR-BGA12V108W0WW**

Level VI AC/DC Power Supply  
**AC Input:** 100-240V, 2.8A  
**DC Output:** 12V, 9A, 108W .



#### **CBL-DC-381A1-01**

DC Line Cord for running multi-slot cradles from a single Level VI power supply PWR-BGA12V108W0WW



#### **23844-00-00R**

US AC line cord, 7.5 feet long, grounded, three wire for power supplies.



#### **BRKT-SCRD-SMRK-01**

Rack/Wall Mounting bracket for multi-slot cradles.

### Charging LED indicators

Off	Battery not charging
Solid Amber	Healthy battery charging
Solid Green	Healthy battery charging complete
Fast Blink Red	Charging error
Solid Red	Unhealthy battery



# WS50 RFID Multi-Slot Battery Charger

## WS50 RFID, 20 Slot Spare Battery Charger

**SAC-WS5X-20S24-01:** WS50 RFID twenty slot spare battery charger, charges twenty 2400mAh batteries. LEDs on the cradle indicate charge status of each battery.



### Power supply for multi-slot cradle



#### **PWR-BGA12V108W0WW**

Level VI AC/DC Power Supply  
**AC Input:** 100-240V, 2.8A  
**DC Output:** 12V, 9A, 108W .



#### **CBL-DC-381A1-01**

DC Line Cord for running multi-slot cradles from a single Level VI power supply PWR-BGA12V108W0WW



#### **23844-00-00R**

US AC line cord, 7.5 feet long, grounded, three wire for power supplies.



#### **BRKT-SCRD-SMRK-01**

Rack/Wall Mounting bracket for multi-slot cradles.

### Charging LED indicators

Off	Battery not charging
Solid Amber	Healthy battery charging
Solid Green	Healthy battery charging complete
Fast Blink Red	Charging error
Solid Red	Unhealthy battery





# WS50 Scan Multi-Slot Ethernet Cradle

## WS50 Scan, 5 Slot Ethernet Cradle with Spare Battery Charger

**CRD-WS5X-5SECV-01:** WS50 Scan Five Slot Ethernet Cradle with Spare Battery Charger, charges 5 WS50 Scan devices and 5 spare 1300mAh batteries. LED near the top of the WS50 display indicate charge status of each device. LEDs on the cradle indicate charge status of each battery.



### Power supply for multi-slot cradle



#### **PWR-BGA12V108W0WW**

Level VI AC/DC Power Supply  
**AC Input:** 100-240V, 2.8A  
**DC Output:** 12V, 9A, 108W .



#### **CBL-DC-381A1-01**

DC Line Cord for running multi-slot cradles from a single Level VI power supply PWR-BGA12V108W0WW



#### **23844-00-00R**

US AC line cord, 7.5 feet long, grounded, three wire for power supplies.



#### **BRKT-SCRD-SMRK-01**

Rack/Wall Mounting bracket for multi-slot cradles.

### Charging LED indicators

Off	Battery not charging
Solid Amber	Healthy battery charging
Solid Green	Healthy battery charging complete
Fast Blink Red	Charging error
Solid Red	Unhealthy battery



# WS50 Camera Multi-Slot Ethernet Cradle

## WS50 Camera, 5 Slot Ethernet Cradle with Spare Battery Charger

**CRD-WS5X-5SEWR-01:** WS50 Camera Five Slot Ethernet Cradle with Spare Battery Charger, charges 5 WS50 Camera devices and 5 spare 800mAh batteries. LED near the top of the WS50 display indicates charge status of each device. LEDs on the cradle indicate charge status of each battery.



### Power supply for multi-slot cradle



#### **PWR-BGA12V108W0WW**

Level VI AC/DC Power Supply  
**AC Input:** 100-240V, 2.8A  
**DC Output:** 12V, 9A, 108W .



#### **CBL-DC-381A1-01**

DC Line Cord for running multi-slot cradles from a single Level VI power supply PWR-BGA12V108W0WW



#### **23844-00-00R**

US AC line cord, 7.5 feet long, grounded, three wire for power supplies.



#### **BRKT-SCRD-SMRK-01**

Rack/Wall Mounting bracket for multi-slot cradles.

### Charging LED indicators

Off	Battery not charging
Solid Amber	Healthy battery charging
Solid Green	Healthy battery charging complete
Fast Blink Red	Charging error
Solid Red	Unhealthy battery





# WS50 RFID Multi-Slot Ethernet Cradle

## WS50 RFID, 5 Slot Ethernet Cradle with Spare Battery Charger

**CRD-WS5X-5SERD-01:** WS50 RFID Five Slot Ethernet Cradle with Spare Battery Charger, charges 5 WS50 RFID devices and 5 spare 2400mAh batteries. LED near the top of the WS50 display indicate charge status of each device. LEDs on the cradle indicate charge status of each battery.



### Power supply for multi-slot cradle



#### **PWR-BGA12V108W0WW**

Level VI AC/DC Power Supply  
**AC Input:** 100-240V, 2.8A  
**DC Output:** 12V, 9A, 108W .



#### **CBL-DC-381A1-01**

DC Line Cord for running multi-slot cradles from a single Level VI power supply PWR-BGA12V108W0WW



#### **23844-00-00R**

US AC line cord, 7.5 feet long, grounded, three wire for power supplies.



#### **BRKT-SCRD-SMRK-01**

Rack/Wall Mounting bracket for multi-slot cradles.

### Charging LED indicators

Off	Battery not charging
Solid Amber	Healthy battery charging
Solid Green	Healthy battery charging complete
Fast Blink Red	Charging error
Solid Red	Unhealthy battery



# WS50 Charge Cables

WS50 charge cable snaps on to bottom of WS50 device to provide charging and client-host communications.

**CBL-WS5X-USB1-01** : WS50 charge cable with USB-C female port. Cable length 6 inches / 15cm. Requires separate purchase of USB-C to USB-A cable and AC power adapter.

**CBL-WS5X-USB1-02** : WS50 charge cable with Micro-USB female port. Cable length 6 inches / 15cm. Requires separate purchase of Micro-USB to USB-A cable and AC power adapter.

**CBL-WS5X-USBA-01** : WS50 charge cable with Type A male connector. Cable length 4 feet / 1.2 meters



## Accessories for WS50 charge cable



### **PWR-WUA5V12W0XX**

Power Supply-100-240 VAC, 5 V, 2.5 A with country specific plugs.



### **CBL-TC5X-USBC2A-01**

USB-C to USB-A communication and charging cable, 1M length



### **25-MCXUSB-01R**

Micro-USB to USB-A communication and charging cable, 1.5M length

## Charging LED indicators

Off	Battery not charging
Solid Amber	Healthy battery charging
Solid Green	Healthy battery charging complete
Fast Blink Red	Charging error
Solid Red	Unhealthy battery



# WS50 Scan Two Finger Mount



## WS50 Two Finger Trigger Mount

**SG-WS5X-TRGA-01:** WS50 Scan replacement trigger mount. Includes strap and finger pad.



## Accessories for WS50 back of hand mount



### **SG-WS5X-STRP-10**

Replacement finger strap for WS50 Scan, 10 pack



### **SG-WS5X-SHLCS-01**

Replacement protective shell for WS50 Scan. Two input buttons.



### **SG-WS5X-DFLTC-01**

Replacement protective deflector for WS50 Scan. Includes mounting screws.



### **SG-WS5X-SCRNP1-01**

Replacement screen protector for WS50 display.



# WS50 Scan Back of Hand Mount

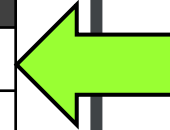
## WS50 Scan Back of Hand Mount

**SG-WS5X-BHMT-01** : WS50 Scan back of hand mount. Includes mounting plate and trigger assembly. Requires separate purchase of hand wrap.



Part #	Hand / Size
SG-WEAR-HNWPRS-01	Right, small
SG-WEAR-HNWPLS-01	Left, small
SG-WEAR-HNWPRM-01	Right, medium
SG-WEAR-HNWPLM-01	Left, medium
SG-WEAR-HNWPRL-01	Right, large
SG-WEAR-HNWPLL-01	Left, large

## Accessories for WS50 back of hand



### **SG-WEAR-HNWPXX-01**

Spare Hand Wrap for WS50 Back of Hand Mount. Available in small, medium, large and left, right.



### **SG-WS5X-SHLCS-01**

Replacement protective shell for WS50 Scan. Two input buttons.



### **SG-WS5X-DFLT-01**

Replacement protective deflector for WS50 Scan. Includes mounting screws.



### **SG-WS5X-SCRNP1-01**

Replacement screen protector for WS50 display.





# WS50 Camera Mount



**SG-WS5X-WSTMT-01:** WS50 Camera replacement wrist mount. Strap not included, must be purchased separately.



## Accessories for WS50 Camera Mount



### **SG-WS5X-WSTRP-01**

Wrist strap for WS50 Camera, large size. Not included with WS50 Camera device, must be purchased separately.



### **SG-WS5X-WSTRS-01**

Wrist strap for WS50 Camera, small size. Not included with WS50 Camera device, must be purchased separately.



### **SG-WS5X-SHLWR-01**

Replacement protective shell for WS50 Camera. Four input buttons.



### **SG-WS5X-SCRNP1-01**

Replacement screen protector for WS50 display.





# WS50 RFID Two Finger Mount



## WS50 Two Finger Trigger Mount

**SG-WS5X-TRGA-01:** WS50 RFID replacement trigger mount. Includes strap and finger pad.



## Accessories for WS50 back of hand mount



### **SG-WS5X-STRP-10**

Replacement finger strap for WS50 RFID, 10 pack



### **SG-WS5X-SHLCS-01**

Replacement protective shell for WS50 RFID. Two input buttons.



### **SG-WS5X-DFLTR-01**

Replacement protective deflector for WS50 RFID. Includes mounting screws.



### **SG-WS5X-CMPDR-01**

Replacement Comfort Pad for WS50 RFID Finger Mount.



# WS50 RFID Back of Hand Mount

## WS50 RFID Back of Hand Mount

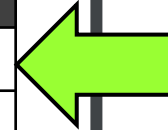
**SG-WS5X-BHRS-01:** WS50 RFID back of hand mount. Includes mounting plate and trigger assembly. Requires separate purchase of hand wrap.



Part #	Hand / Size
SG-WEAR-HNWPRS-01	Right, small
SG-WEAR-HNWPLS-01	Left, small
SG-WEAR-HNWPRM-01	Right, medium
SG-WEAR-HNWPLM-01	Left, medium
SG-WEAR-HNWURL-01	Right, large
SG-WEAR-HNWURLL-01	Left, large



## Accessories for WS50 RFID Back of Hand



### SG-WEAR-HNWPXX-01

Spare Hand Wrap for WS50 Back of Hand Mount. Available in small, medium, large and left, right.



### SG-WS5X-SHLCS-01

Replacement protective shell for WS50 RFID. Two input buttons.



### SG-WS5X-DFLTR-01

Replacement protective deflector for WS50 RFID. Includes mounting screws.



### SG-WS5X-SCRNP1-01

Replacement screen protector for WS50 display.

## WS50 RFID Wrist Mount

Part #	Hand / Size
SG-WS5X-WMTRRL-01	Wrist Mount for WS50 RFID, Right Arm, Large
SG-WS5X-WMTRRS-01	Wrist Mount for WS50 RFID, Right Arm, Small
SG-WS5X-WMTRLL-01	Wrist Mount for WS50 RFID, Left Arm, Large
SG-WS5X-WMTRLS-01	Wrist Mount for WS50 RFID, Left Arm, Small



## Accessories for WS50 RFID Wrist Mount



### SG-WS5X-WSP LRS-01

WS50 RFID Wrist Mount Plate



### SG-WS5X-SHLCS-01

Replacement protective shell for WS50 RFID. Two input buttons.



### SG-WS5X-DFLTR-01

Replacement protective deflector for WS50 RFID. Includes mounting screws.



### SG-WS5X-SCRNP1-01

Replacement screen protector for WS50 display.



## WS50 RFID External Antenna

Part #	Hand / Size
CBL-WS5X-ANTR8S-01	WS50 UHF RFID Antenna 800MHz, 210mm Length for Wrist Mount Left Hand, EMEA
CBL-WS5X-ANTR8L-01	WS50 UHF RFID Antenna Cable, 800MHz, 240mm length for Back of Hand Mount and Wrist Mount Right Hand, EMEA
CBL-WS5X-ANTR9S-01	WS50 UHF RFID Antenna Cable, 900MHz, 210mm length for Wrist Mount Left Hand, North America and Rest of World Minus EMEA
CBL-WS5X-ANTR9L-01	WS50 UHF RFID Antenna Cable, 900MHz, 240mm length for Back of Hand Mount and Wrist Mount Right Hand, North America and Rest of World Minus EMEA



## WS50 RFID External Antenna Holder for Back of Hand Mount

Part #	Hand / Size
SG-WS5X-BHAHRS-01	WS50 RFID Back of Hand Antenna Holder, Right, Small
SG-WS5X-BHAHRL-01	WS50 RFID Back of Hand Antenna Holder, Right, Large
SG-WS5X-BHAHLS-01	WS50 RFID Back of Hand Antenna Holder, Left, Small
SG-WS5X-BHAHLL-01	WS50 RFID Back of Hand Antenna Holder, Left, Large

